

STATE OF ILLINOIS
DEPARTMENT OF TRANSPORTATION

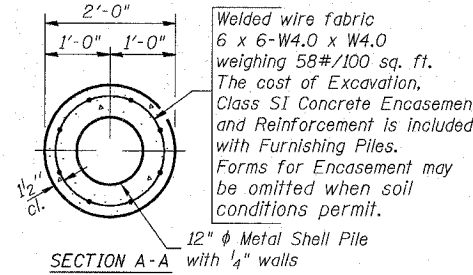
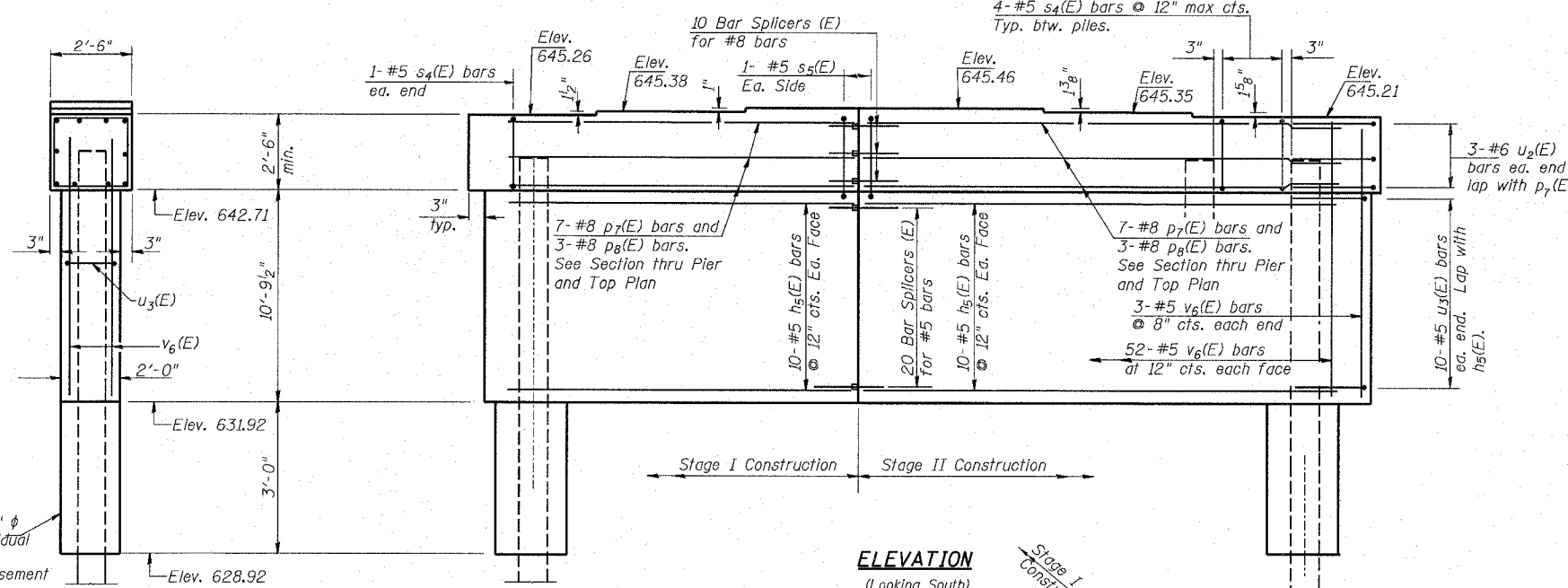
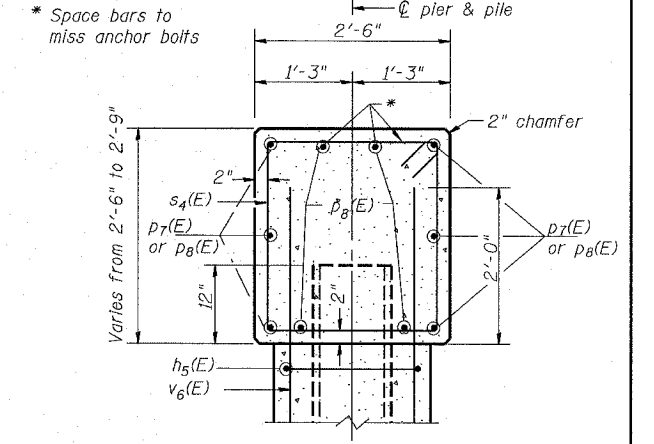
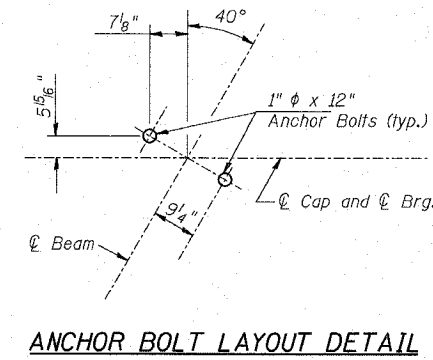
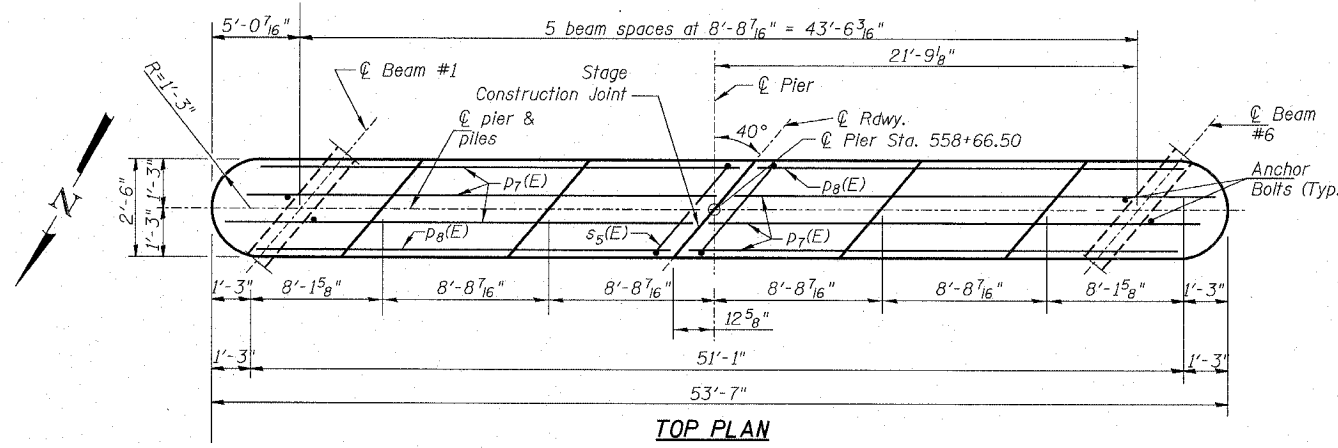
ROUTE NO.	SECTION	COUNTY	TOTAL SHEETS	SHEET NO.
S.B.L.	(102)	Whiteside	57	30
F.A. 646	BR-3			
FED. ROAD DIST. NO. 7 ILLINOIS FED. AID PROJECT-				

CONTRACT NO. 64426

- Notes: 1. Space reinforcement in cap to miss anchor bolts.
2. Pour steps monolithically with cap.
3. All edges shall have standard 2" chamfers except as noted.

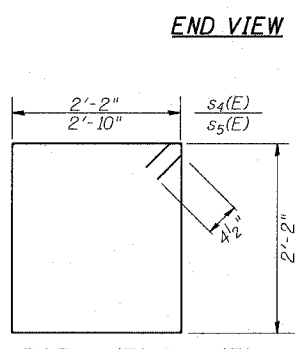
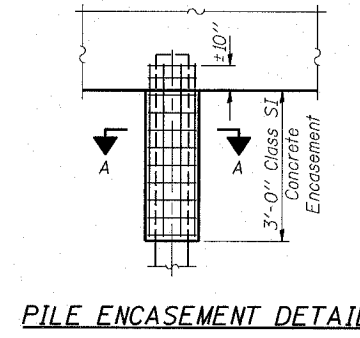
PILE DATA

Type: 12" ϕ Metal Shell with 1/4" walls
Capacity: 42 tons; over drive to 65 tons
Est. Length: 95 LF
No. Req'd: 11 plus 1 test pile

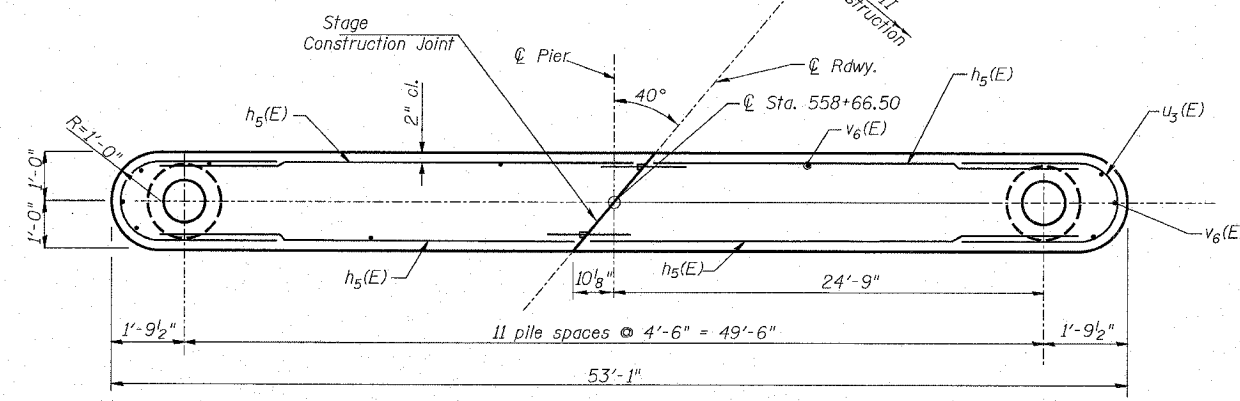


BILL OF MATERIAL

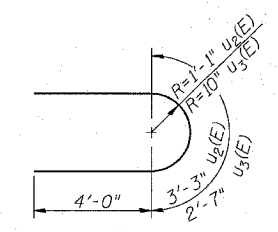
Bar	No.	Size	Length (ft)	Shape	
h5(E)	40	#5	24'-9"	—	
p7(E)	14	#8	26'-0"	—	
p8(E)	6	#8	24'-5"	—	
s4(E)	46	#5	9'-5"	□	
s5(E)	2	#5	10'-9"	□	
u2(E)	6	#6	11'-3"	U	
u3(E)	20	#5	10'-7"	—	
v6(E)	110	#5	12'-9"	—	
Concrete structures				Cu. Yd.	54.9
Reinforcement bars, epoxy coated				Lb.	4650
Furnishing Metal Pile Shells 12"				L.F.	1045
Driving and Filling Shells				L.F.	1045
Structure Excavation				Cu. Yd.	53
Underwater Structure Excavation Protection, Location 2				Each	1
Test Piles Metal Shell				Each	1



BAR s4(E) & s5(E)



STEM SECTION



BAR u2(E) & u3(E)

PIER #2
IL RTE 40 OVER WINNEBAGO DITCH
F.A.P. 646 SECTION (102)BR-3
WHITESIDE COUNTY
STATION 558+38
S.N. 098-0109

DESIGNED	DDB	FILE NUMBER	136.110
CHECKED	AMPH	DATE	Aug. 2005
DRAWN	JDB		
CHECKED	DDB		

RANDOLPH & ASSOCIATES, INC.
111 N. FLOWER PARKWAY, PEORIA, IL 61614-2124
TEL: 309-253-8819 FAX: 309-253-8820
CONSULTING ENGINEERS & LAND SURVEYORS

R:\Projects\0136\0136-110 Winn ph 11\brldge planse\18-pier2.dgn

10:25:37 AM
8/8/2005