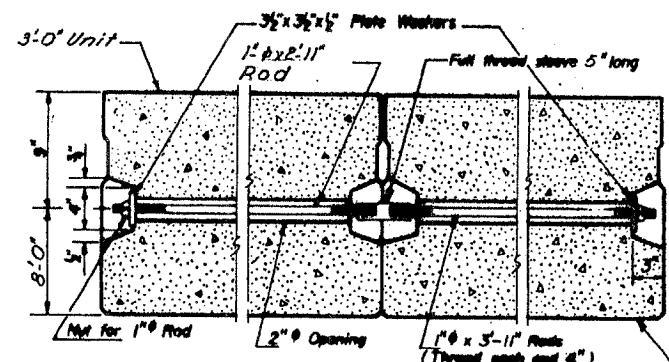
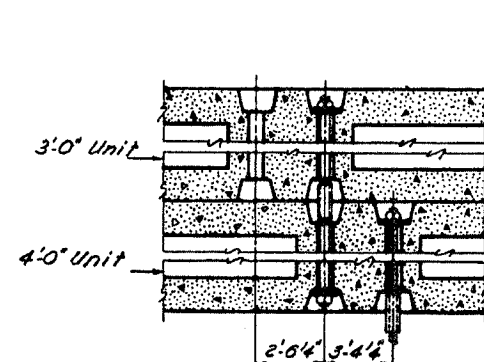
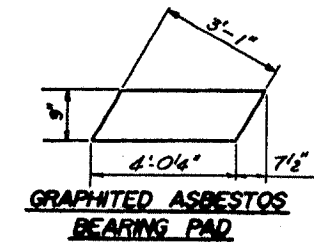
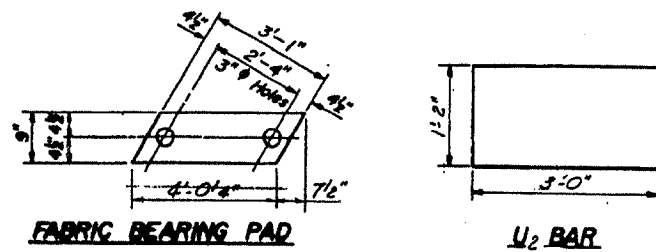
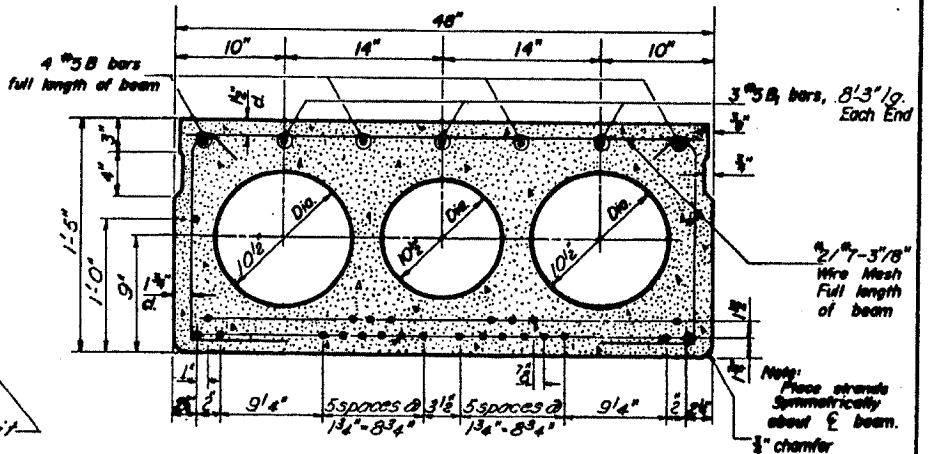


STATE OF ILLINOIS  
DEPARTMENT OF PUBLIC WORKS & BUILDINGS  
DIVISION OF HIGHWAYS

ROUTE NO.	SEC.	COUNTY	TOTAL SHEETS	SHEET NO.	SHEET NO. 3
F.A. 646	(102)BR-3	WHITESIDE	57	39	
CONTRACT #64426					

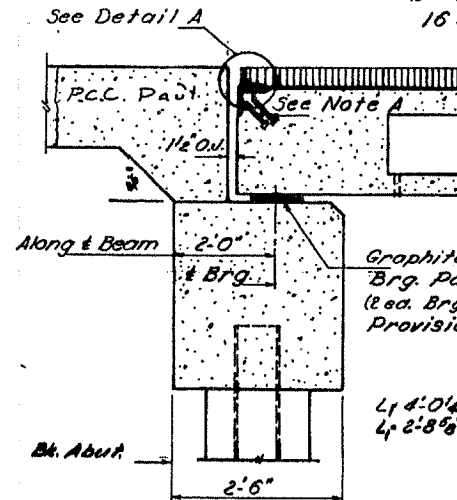
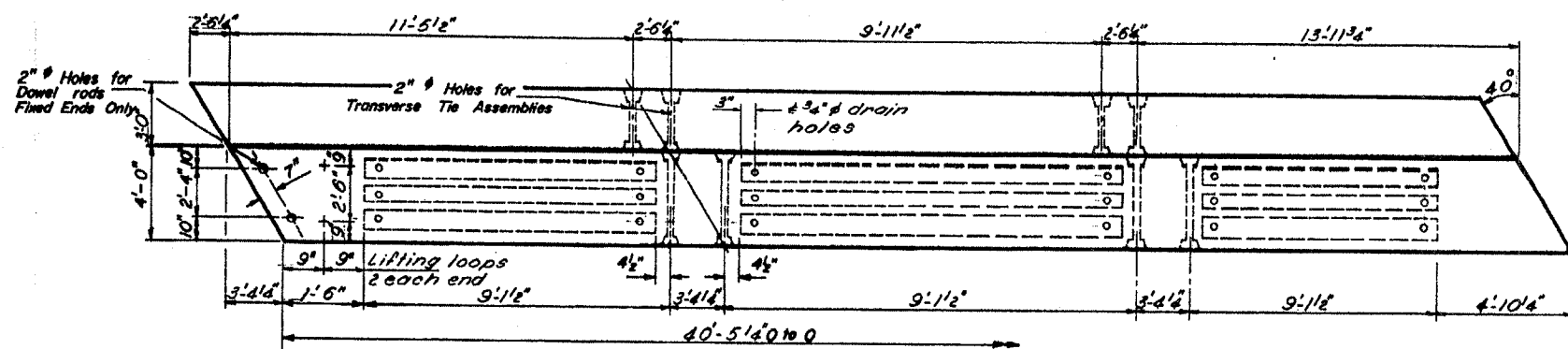


TYPICAL TRANSVERSE TIE ASSEMBLY



TYPICAL SECTION

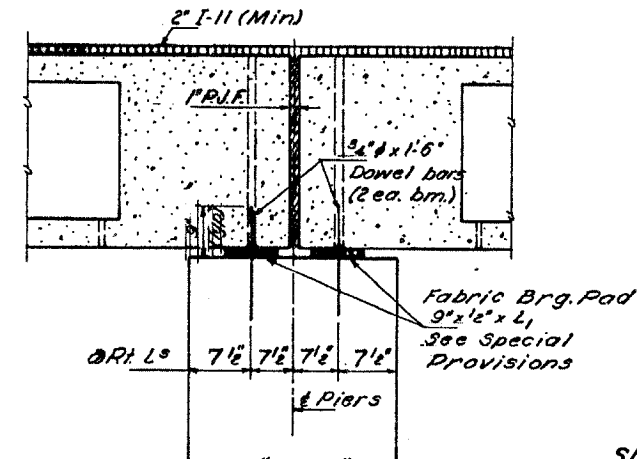
16 #8 Strands, Each Strand Stressed to 18,900 lbs.  
16 Strands 1 1/2' up 8 Strands 3/4' up 2 Strands 12' up



SECTION AT ABUT.

Note A  
3/4" #8 CR1020 STL granular or solid flux filled headed studs automatically end welded at all 1'-0" cts. 3 studs for 3'-0" unit 4 studs for 4'-0" unit 2 studs for curb unit

Note B:  
Angles are to be ordered and fabricated to fit the pavement crown, after the beams are in place and the engineer has taken profile elevations along the entire structure. Cost of angles shall be incidental.

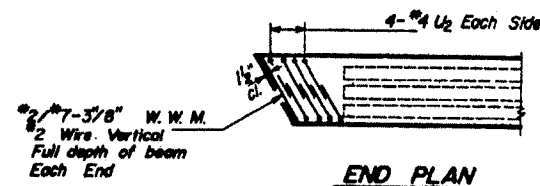


SECTION @ PIERS

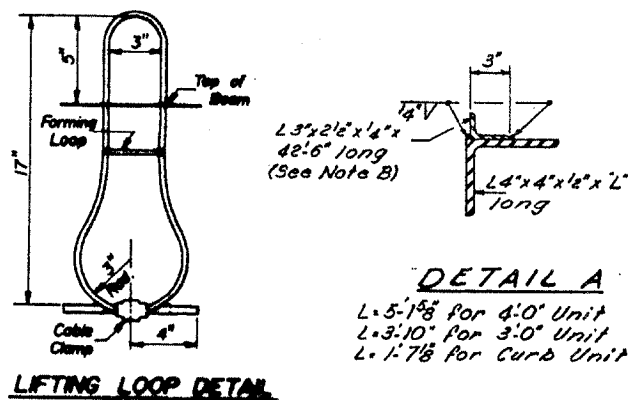
2 x 4'-0 1/4" for 4'-0" units  
1 x 2'-8 3/8" for 3'-0" units

Notes  
All materials billed on sheet 3.

SUPERSTRUCTURE (4'-0" UNIT)  
S.B.I. RT 88 SEC. 102B-1  
WHITESIDE COUNTY  
STATION 558+37.80



END PLAN



DETAIL A

L 5'-1 5/8" for 4'-0" Unit  
L 3'-10" for 3'-0" Unit  
L 1'-7 7/8" for Curb Unit

LIFTING LOOP DETAIL

DESIGNED	Wei Hsing
CHECKED	John Hayes
DRAWN	JAMES R. CARMAN N.H.
CHECKED	John Hayes

EXAMINED	Nov 23 1966
PASSED	[Signature]
APPROVED	[Signature]

PD-2-R 11-19-65