

F.A.P. RTE.	SECTION	COUNTY	TOTAL SHEETS	SHEET NO.
573	116R-4	DEKALB	416	73
STA. 800+00 TO STA. 806+00		FED. ROAD DIST. NO. ILLINOIS FED. AID PROJECT		

Kathleen D. & Terry A. Brown

Gerald L. & Monte L. Enoch

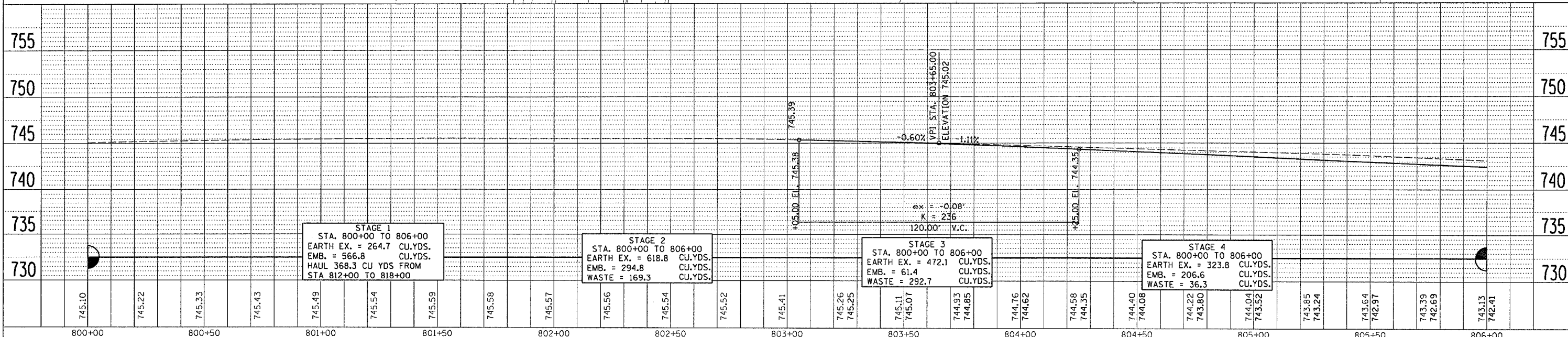
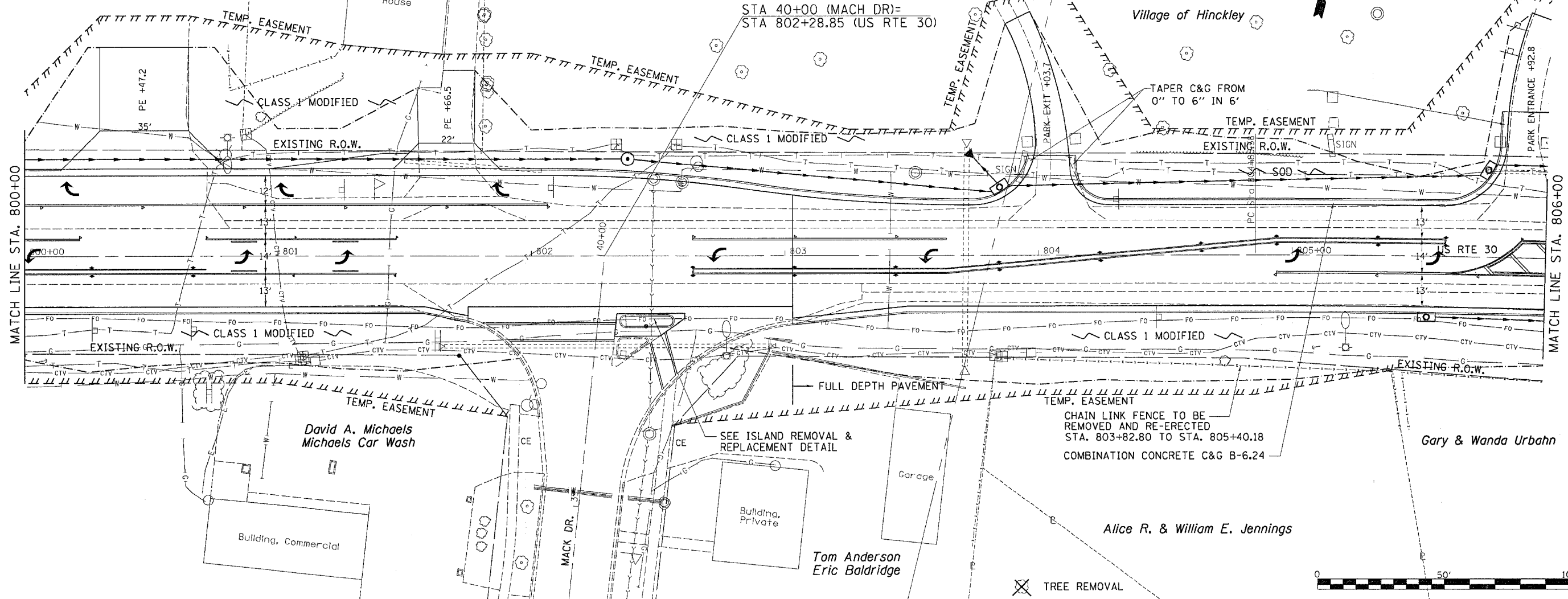
Village of Hinckley

Village of Hinckley

STA 40+00 (MACH DR)=  
STA 802+28.85 (US RTE 30)

DATE	BY	REVISION
		DESIGNED
		CHECKED
		ALIGNED
		CONSTRUCTED
		FILED
		NO.

DATE	BY	REVISION
		DESIGNED
		CHECKED
		ALIGNED
		CONSTRUCTED
		FILED
		NO.



DATE-TIME  
DGN-SPEC  
REF  
REF