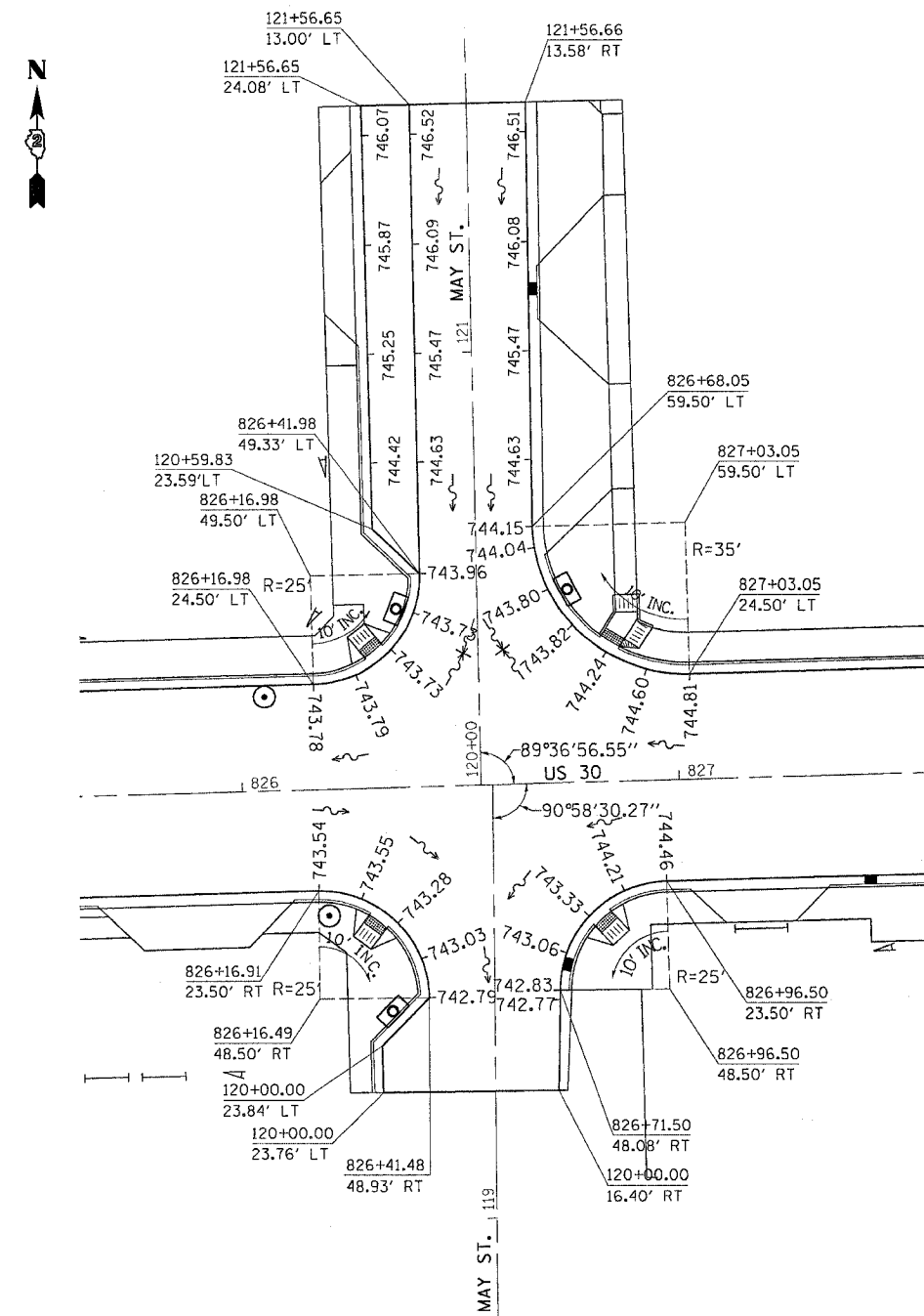
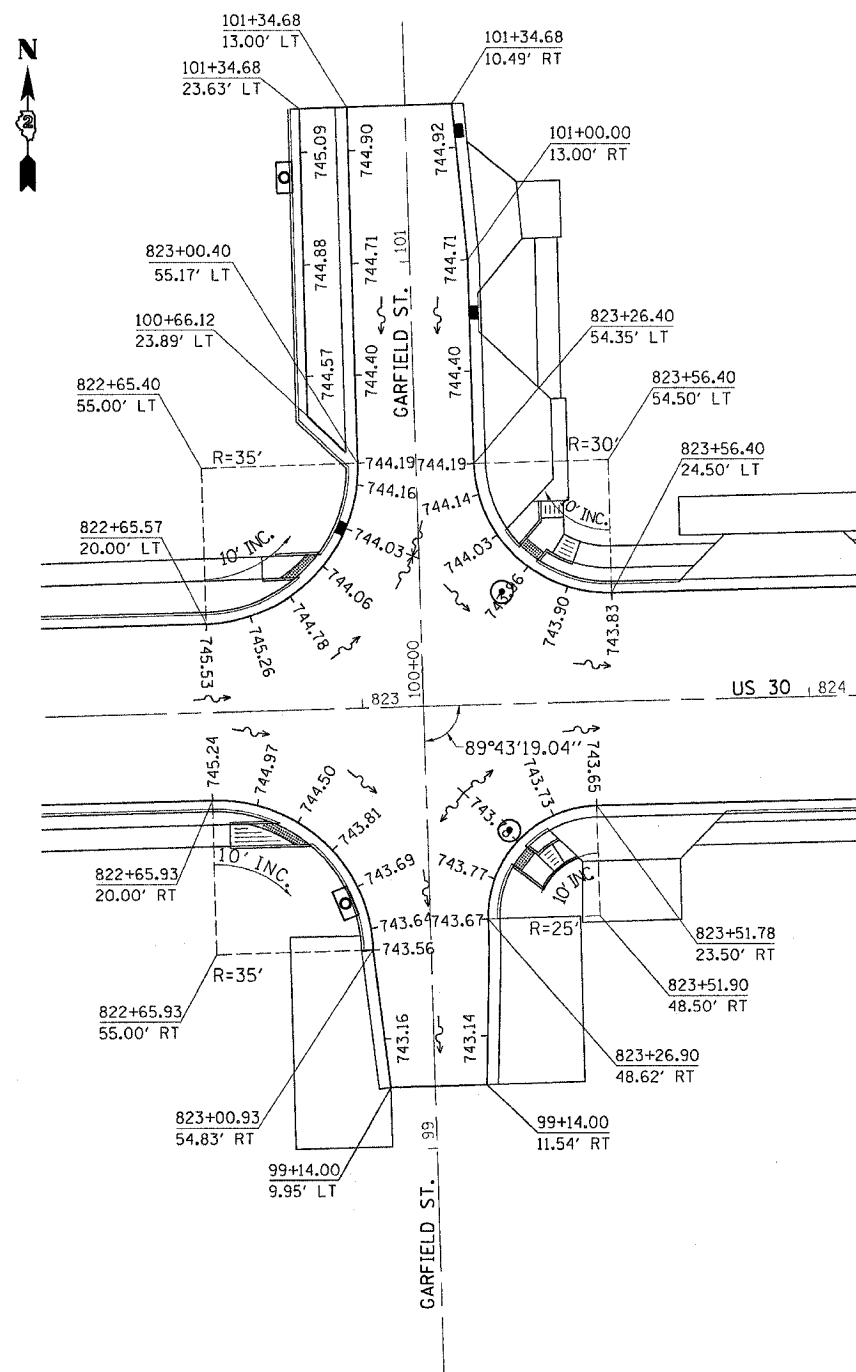


F.A. R. RTE.	SECTION	COUNTY	TOTAL SHEETS	SHEET NO.
573	116R-4	DEKALB	416	149
STA.		TO STA.		
FED. ROAD DIST. NO.		ILLINOIS FED. AID PROJECT		

PAVEMENT ELEVATIONS



DATE-TIME:
 CON-SPEC:
 PLOT DATE: Fri Sep 02 07:26:36 2005
 FILE NAME: C:\projects\62817\64517\64517.dgn
 REF PLOT SCALE: 1/4"=1'-0"

REVISIONS	
NAME	DATE

ILLINOIS DEPARTMENT OF TRANSPORTATION

SCALE: VERT.
 HORIZ.
 DATE

DRAWN BY
 CHECKED BY