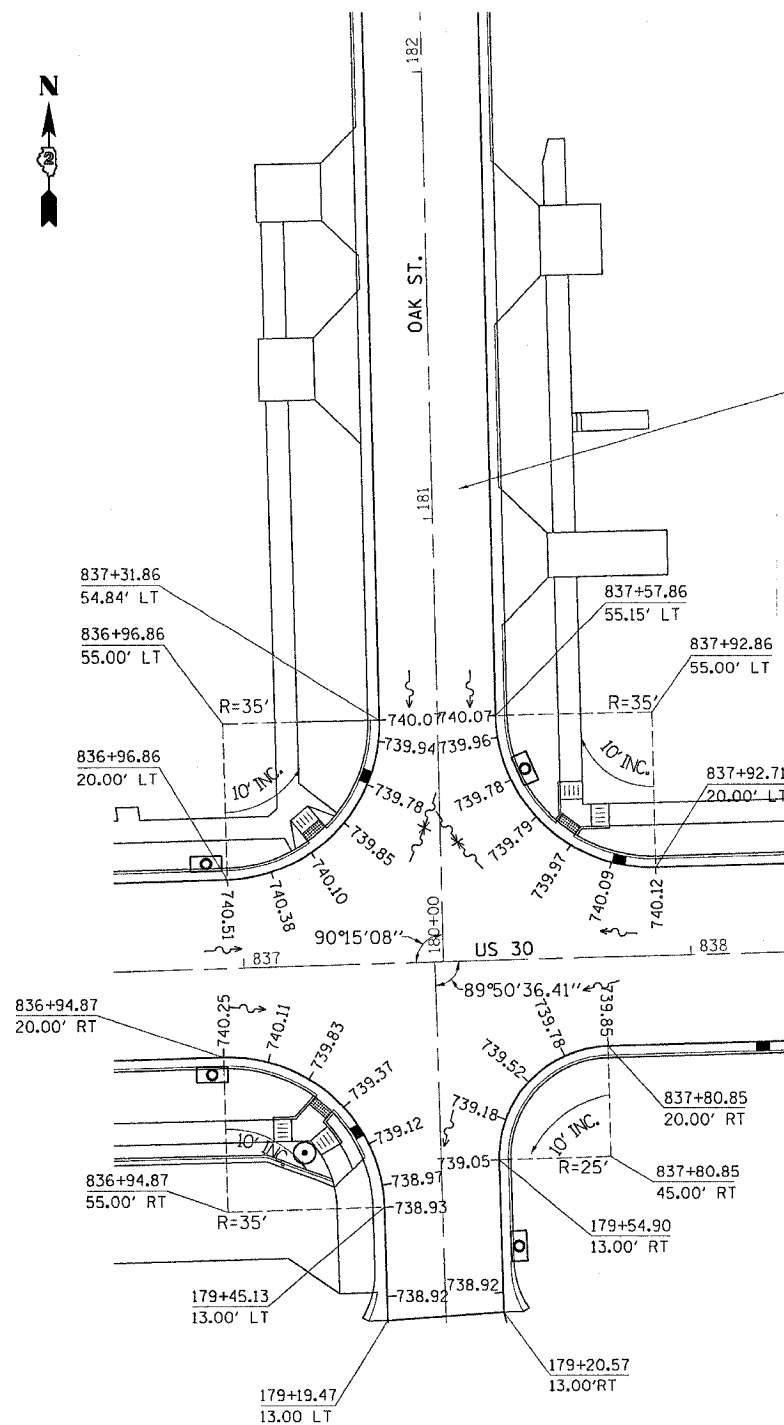
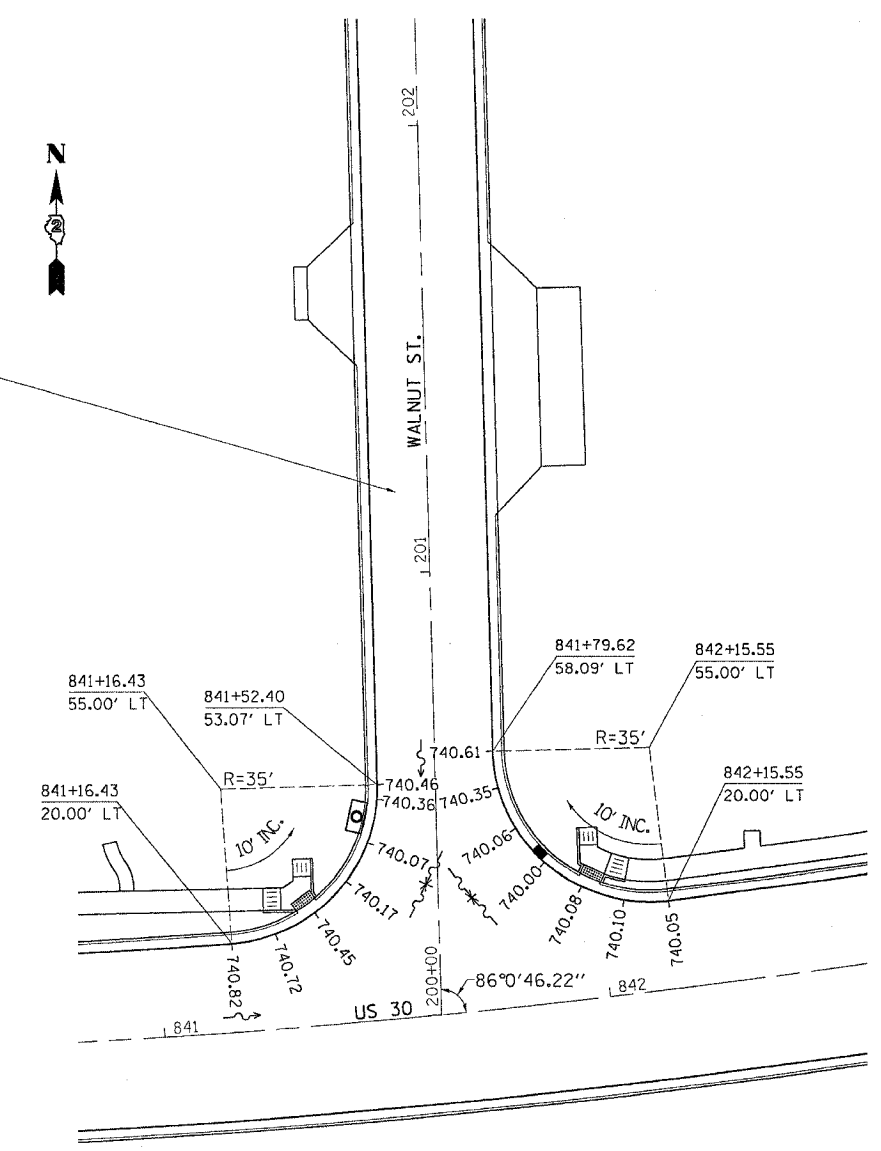


F.A. RTE.	SECTION	COUNTY	TOTAL SHEETS	SHEET NO.
573	116R-4	DEKALB	416	151
STA.		TO STA.		
FED. ROAD DIST. NO.	ILLINOIS	FED. AID PROJECT		

PAVEMENT ELEVATIONS



FOR SIDEROAD ELEVATIONS SEE FOLOWING SHEETS



REVISIONS		ILLINOIS DEPARTMENT OF TRANSPORTATION
NAME	DATE	
		SCALE: VERT. HORIZ. DATE
DRAWN BY		CHECKED BY

DATE-TIME: 10:00-SPEC: F:\1 Sep 02 07:26:36 2005
 PLOT DATE: F:\1 Sep 02 07:26:36 2005
 FILE NAME: C:\projects\116R-4\116R-4.dgn
 REF: PLOT SCALE: 1"=100'