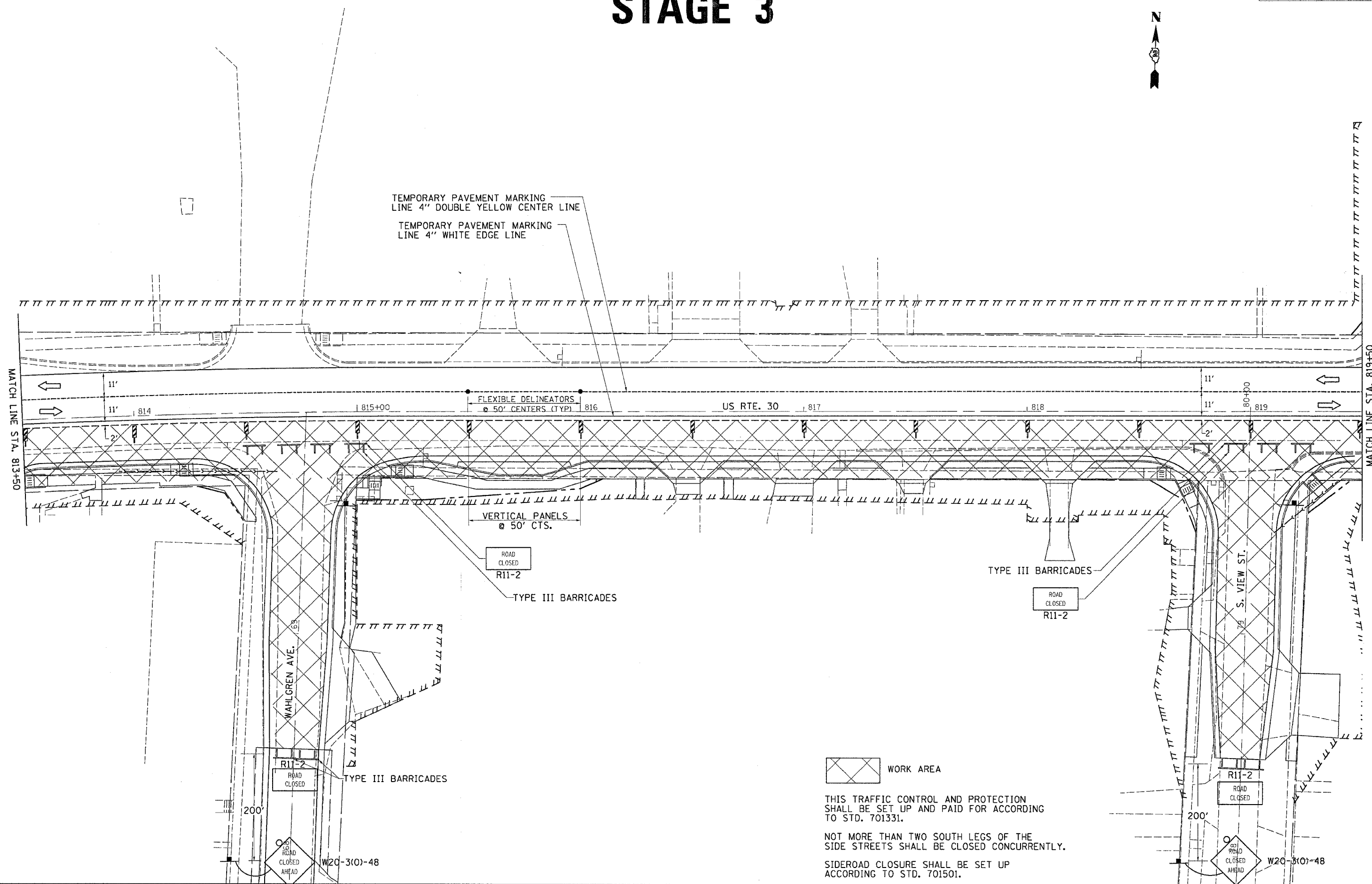
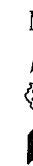
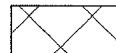


F.A. RTE.	SECTION	COUNTY	TOTAL SHEETS	SHEET NO.
573	116R-4	DEKALB	416	199
STA.		TO STA.		
FED. ROAD DIST. NO.	ILLINOIS	FED. AID PROJECT		

STAGE 3



FILE NAME = #FILES
 LEVELS = #LEVELS
 PLOT SCALE = #PLOTS/SCALE
 PLOT SCALE = #PLOTS/SCALE
 OPERATOR = #OPERATOR
 REF = #REF
 REF = #REF

 WORK AREA

THIS TRAFFIC CONTROL AND PROTECTION SHALL BE SET UP AND PAID FOR ACCORDING TO STD. 701331.

NOT MORE THAN TWO SOUTH LEGS OF THE SIDE STREETS SHALL BE CLOSED CONCURRENTLY.

SIDEROAD CLOSURE SHALL BE SET UP ACCORDING TO STD. 701501.