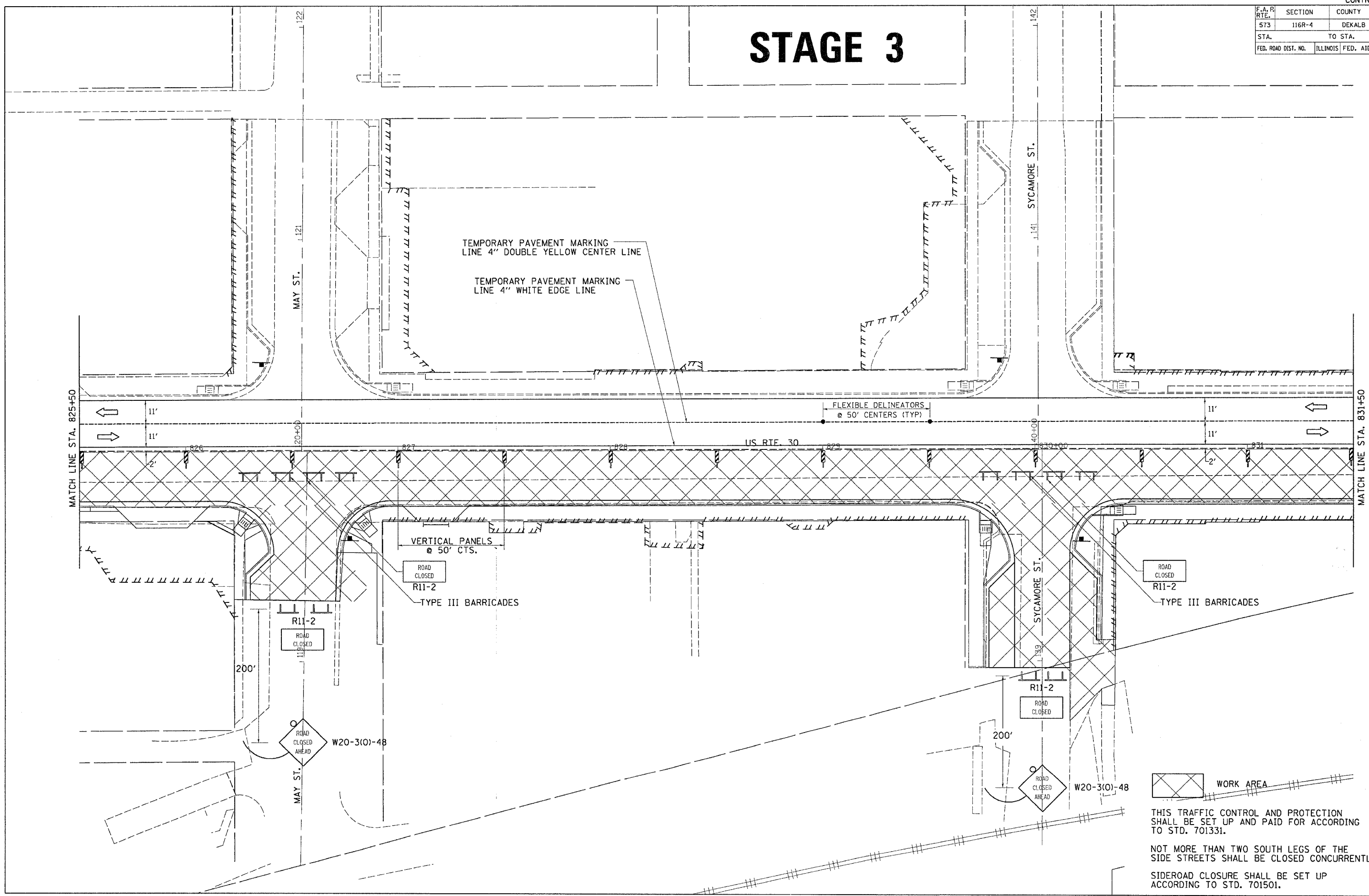


F.A. PROJECT NO.	SECTION	COUNTY	TOTAL SHEETS	SHEET NO.
573	116R-4	DEKALB	416	201
STA.		TO STA.		
FED. ROAD DIST. NO.		ILLINOIS FED. AID PROJECT		

# STAGE 3



FILE NAME = #FILES  
 LEVELS = #LEVELS  
 PLOT SCALE = #PLOTS/SCALE  
 PLOT DATE = #PLOT DATE  
 REVISIONS = #REVISIONS  
 REVISIONS = #REVISIONS



THIS TRAFFIC CONTROL AND PROTECTION SHALL BE SET UP AND PAID FOR ACCORDING TO STD. 701331.  
 NOT MORE THAN TWO SOUTH LEGS OF THE SIDE STREETS SHALL BE CLOSED CONCURRENTLY.  
 SIDEROAD CLOSURE SHALL BE SET UP ACCORDING TO STD. 701501.