

F.A.P. RTE.	SECTION	COUNTY	TOTAL SHEETS	SHEET NO.
573	116R-4	DEKALB	416	223
STA.		TO STA.		
FED. ROAD DIST. NO.	ILLINOIS	FED. AID PROJECT		

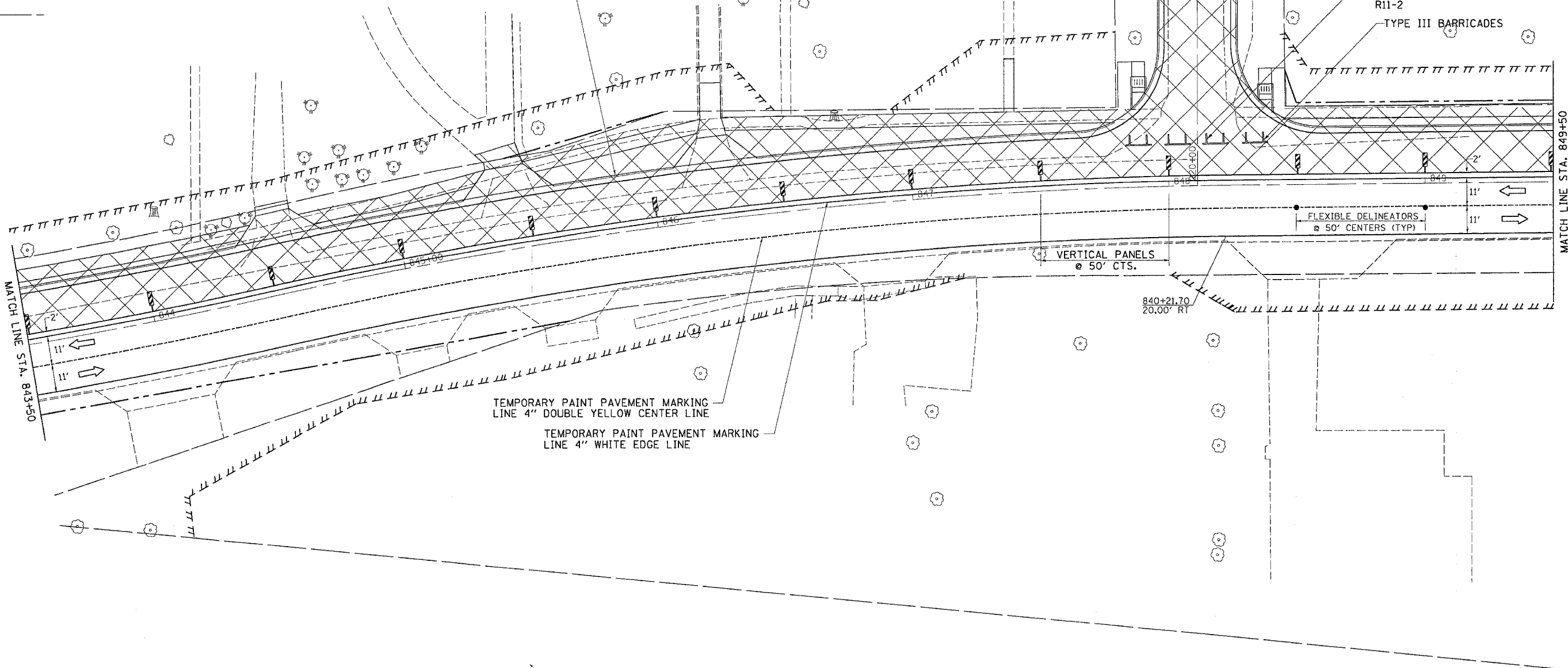
# STAGE 6



REMOVE TEMPORARY RUNAROUND &  
CONSTRUCT NEW PAVEMENT

ROAD  
CLOSED  
R11-2

TYPE III BARRICADES



MATCH LINE STA. 843+50


MATCH LINE STA. 849+50

TEMPORARY PAINT PAVEMENT MARKING  
LINE 4" DOUBLE YELLOW CENTER LINE  
TEMPORARY PAINT PAVEMENT MARKING  
LINE 4" WHITE EDGE LINE

VERTICAL PANELS  
@ 50' CTS.

FLEXIBLE DELINEATORS  
@ 50' CENTERS (TYP)

840+21.70  
20.00' RT

 WORK AREA

TEMPORARY TRAFFIC CONTROL SIGNS SHALL  
BE FURNISHED AND PLACED ACCORDING TO STD. 701331.

NOT MORE THAN TWO NORTH LEGS OF THE  
SIDESTREETS SHALL BE CLOSED CONCURRENTLY.

THIS TRAFFIC CONTROL AND PROTECTION  
SHALL BE SET UP AND PAID FOR ACCORDING  
TO STANDARD 701331.

SIDEROAD CLOSURE SHALL BE SET  
ACCORDING TO STANDARD 701501.

FILE NAME = #FILES  
LEVELS = #LEVELS  
PLOT SCALE = #PLOTS/SCALE  
PLOT DATE = Fri Sep 02 07:37:09 2005  
REF = JORDAN  
REF  
REF