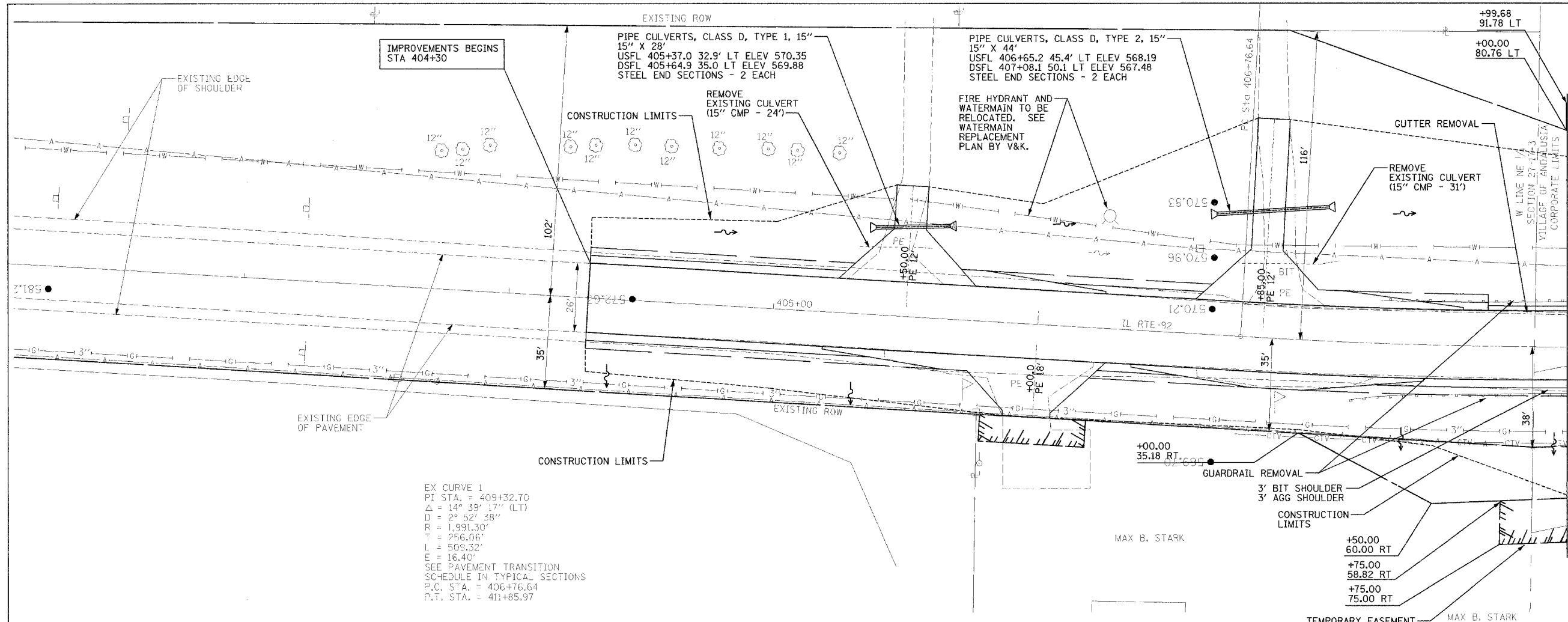
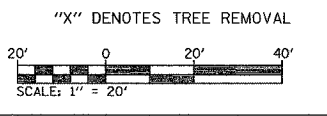


F.A.P. RTE.	SECTION	COUNTY	TOTAL SHEETS	SHEET NO.
599	42MFT-BR	ROCK ISLAND	90	26
STA. 404+30	TO STA. 408+00			
FED. ROAD DIST. NO.	ILLINOIS	FED. AID PROJECT		CONTRACT 64641

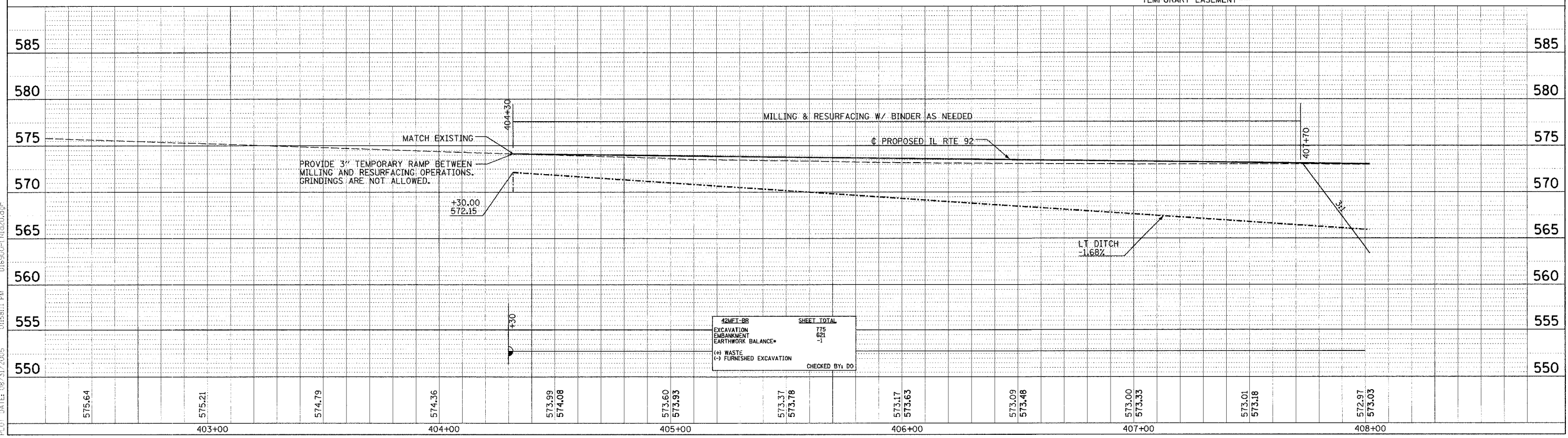


EX CURVE 1  
 PI STA. = 409+32.70  
 $\Delta = 14^\circ 39' 17''$  (LT)  
 $D = 2^\circ 52' 38''$   
 $TR = 1,991.30'$   
 $T = 256.06'$   
 $L = 509.32'$   
 $E = 16.40'$   
 SEE PAVEMENT TRANSITION  
 SCHEDULE IN TYPICAL SECTIONS  
 P.C. STA. = 406+76.64  
 P.T. STA. = 411+85.97



PLAN  
 CHECKED BY: [ ]  
 DATE: [ ]  
 PLOTTED BY: [ ]  
 DATE: [ ]  
 NOTE BOOK NO. [ ]  
 FILE NAME [ ]

PROFILE  
 CHECKED BY: [ ]  
 DATE: [ ]  
 PLOTTED BY: [ ]  
 DATE: [ ]  
 NOTE BOOK NO. [ ]  
 FILE NAME [ ]



42MFT-BR	SHEET TOTAL
EXCAVATION	775
EMBANKMENT	621
EARTHWORK BALANCE*	-1
(+) WASTE	
(-) FURNISHED EXCAVATION	
CHECKED BY: DO	

PLOT DATE: 08/31/2005 01:58:11 PM D:\65000\01\11020.dwg