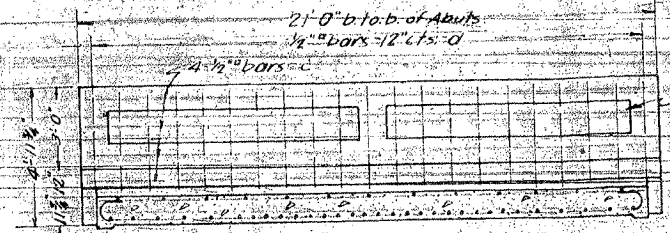
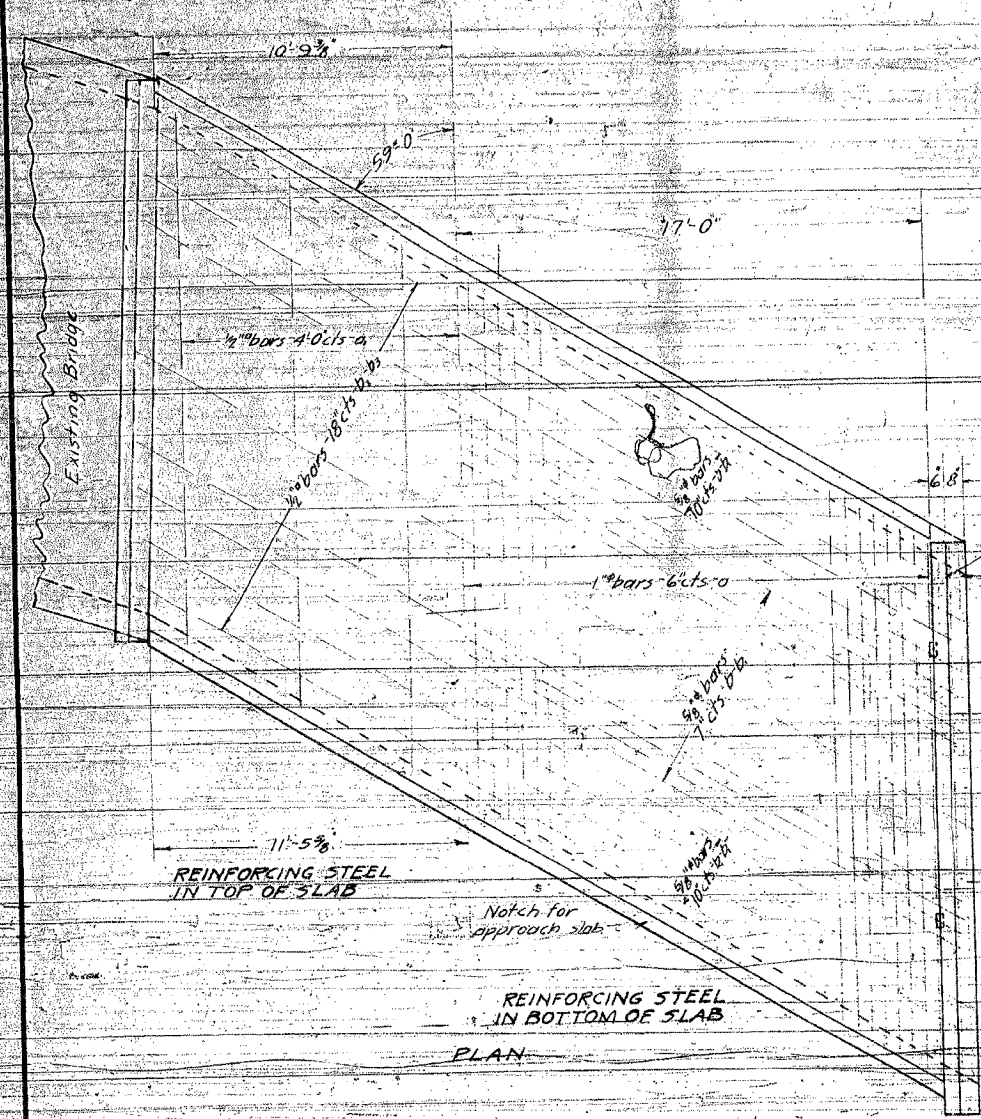


STATE OF ILLINOIS  
DEPARTMENT OF PUBLIC WORKS & BUILDINGS  
DIVISION OF HIGHWAYS

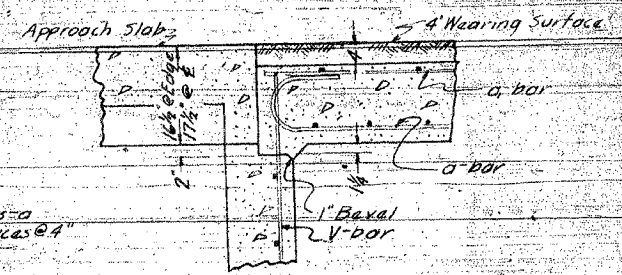
SECTION	COUNTY	TOTAL SHEETS	SHEET NO.
42MFT-BR & 42MFT-T	ROCK ISLAND	90	48

EXISTING CONDITIONS:

CONTRACT 64641  
FOR INFORMATION ONLY



LONGITUDINAL SECTION



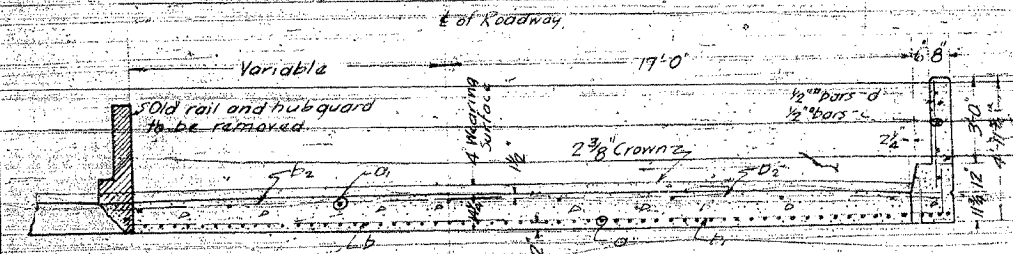
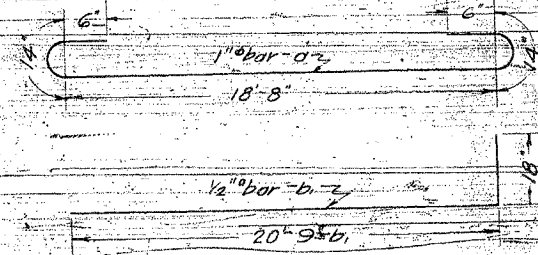
DETAIL OF APPROACH SLAB

SUPERSTRUCTURE  
BILL OF MATERIAL

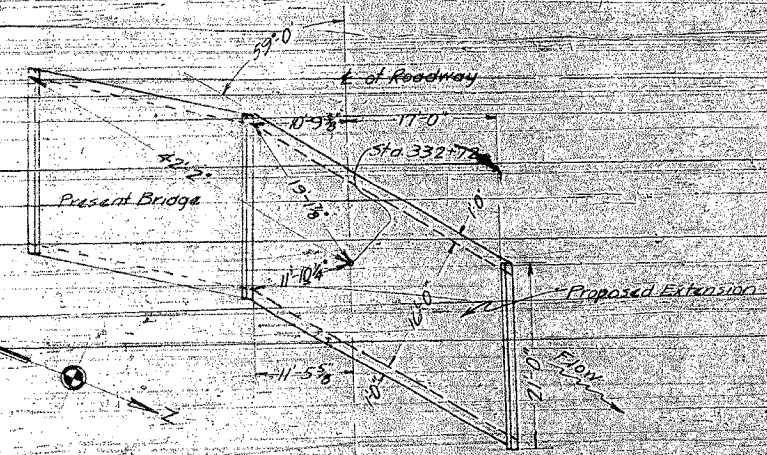
Bar	No.	Size	Length
a	60	1"Ø	27'-0"
a	7	1/2"Ø	19'-3"
b	27	3/8"Ø	21'-0"
b	27	3/8"Ø	13'-0"
b <sub>1</sub>	13	1/2"Ø	21'-0"
b <sub>2</sub>	13	1/2"Ø	13'-0"
c	8	1/2"Ø	20'-0"
d	47	1/2"Ø	31'-3"

Class A Conc. - cu Yds. 75.3  
Hard Rail Conc. - cu Yds. 1.6  
Reinforcing Steel - lbs 5070  
F.P.C. Pavement - sq Yds. 630

Class A Concrete shall be used throughout. Reinforcing steel shall be placed and fastened according to Article 43.5 5th Specifications. Old reinforcing steel shall be bent into new concrete where possible to tie them together. In joining the old structure with the new structure Article 44.12 of 5th Specifications shall be followed.

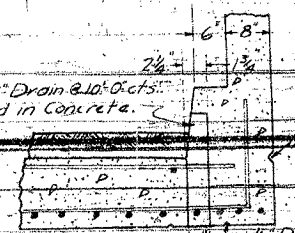


TYPICAL CROSS-SECTION



GENERAL LAYOUT

COMPUTED	M. G. Peter	EXAMINED	
CHECKED		PASSED	
DRAWN	M. G. Peter	APPROVED	
CHECKED			
SPECIAL ASSEMBLED			
CHECKED			



DETAIL OF DRAINS

GUYER BRIDGE  
S.A.R.T. 9 SEC. 42-B-M.F.T.  
ROCK ISLAND CO.  
STA. 332+72