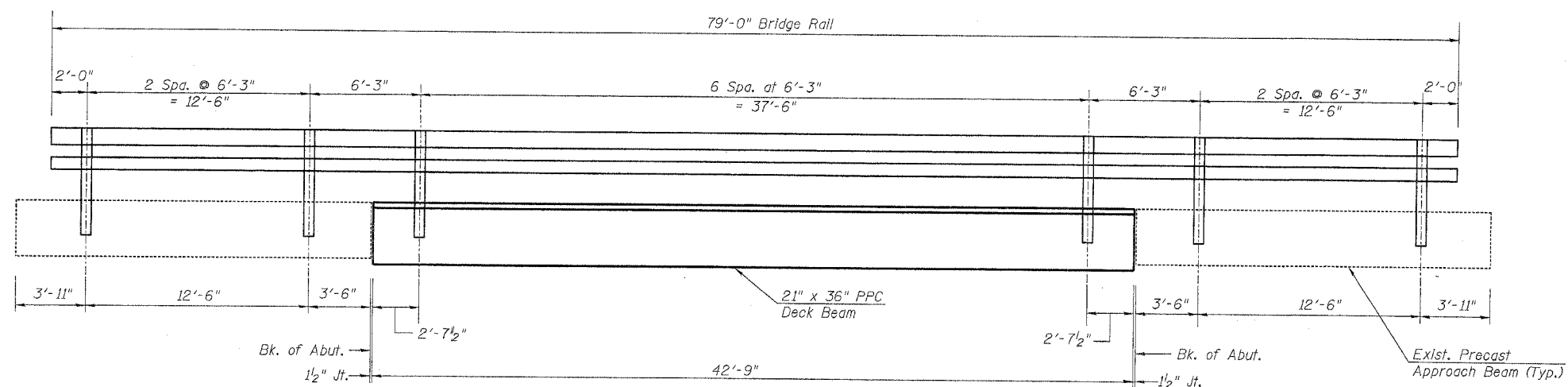
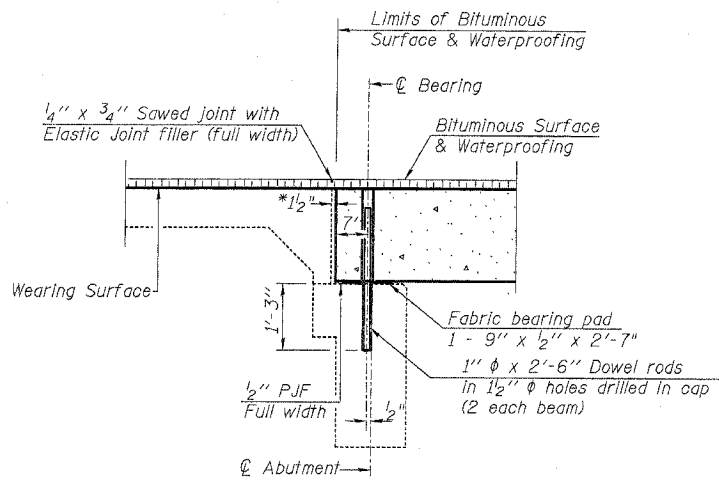


ROUTE NO.	SECTION	COUNTY	SHEET	SHEET	SHEET NO.
FAS 203	9BR-M	ROCK ISLAND	21	14	7 SHEETS
FED. ROAD DIST. NO. 7 ILLINOIS FED. AID PROJECT-					
Contract No. 64719					

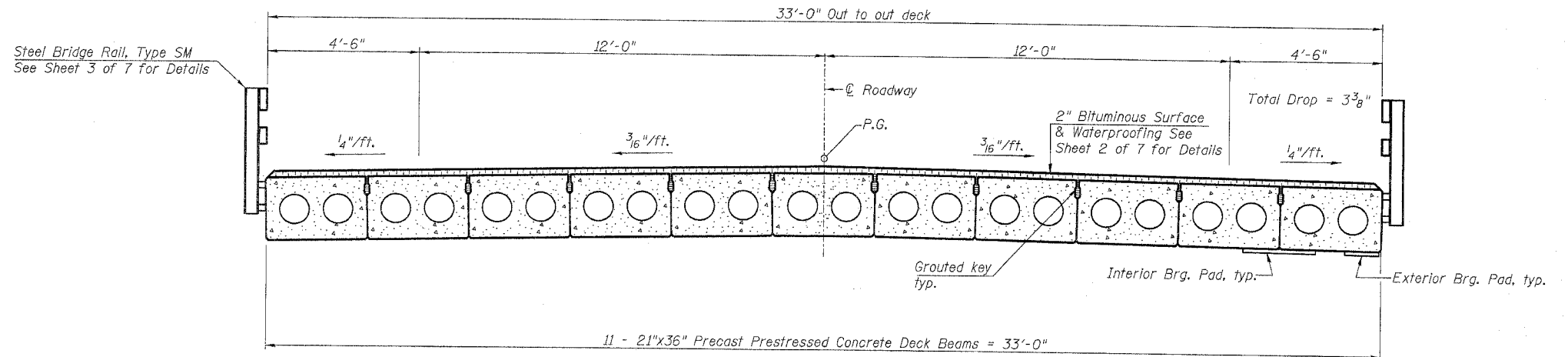


**RAIL POST SPACING**

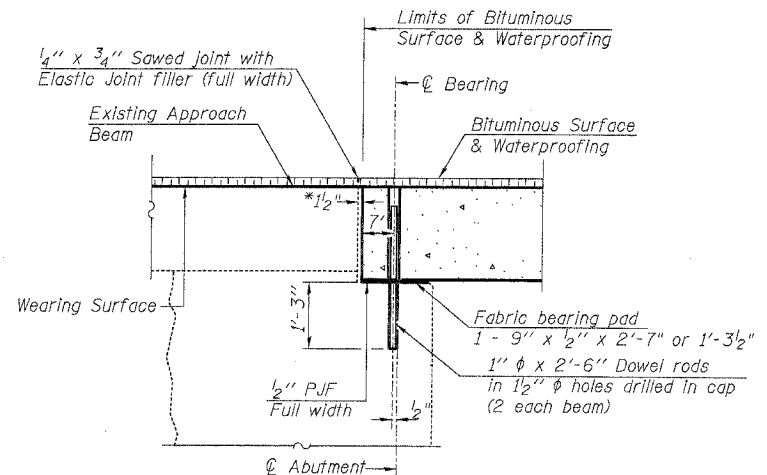


**SECTION THRU ABUTMENT AT INTERIOR BEAMS**

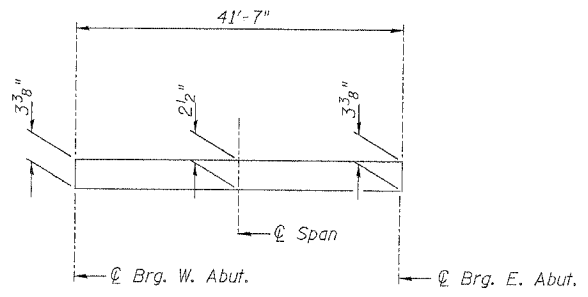
\* 1/2" Joint shall be filled with non-shrink grout. 1/2" dimension may vary to accommodate tolerance in beam length.



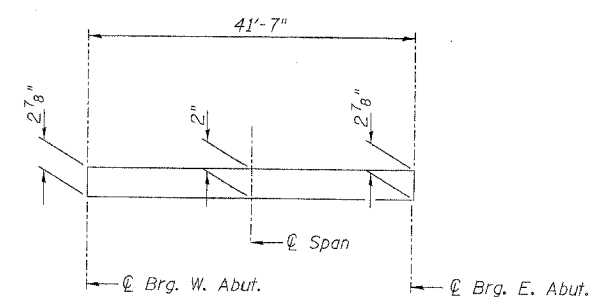
**CROSS SECTION**



**SECTION THRU ABUTMENT AT OUTSIDE BEAMS**



**BITUMINOUS SURFACE PROFILE**  
(Bituminous surface along centerline of Roadway)



**BITUMINOUS SURFACE PROFILE**  
(Bituminous surface along edge of beams.)

Notes:  
 After beams have been erected, holes for dowel rods shall be drilled into substructure and dowel rods placed. Dowel holes shall be filled with non-shrink grout to top of beam and allowed to cure a minimum of 24 hrs prior to grouting the shear keys.  
 See sheet 5 of 7 for bearing pad details.  
 Dowel rods drilled in cap are included in the cost of Precast prestressed Concrete Deck Beams (21" depth).  
 See Sheet 2 of 7 for connection of rail posts to existing precast approach beams.

8/5/2005 11:32:39 AM ... \0810034.dgn

REVISIONS	
NAME	DATE

ILLINOIS DEPARTMENT OF TRANSPORTATION  
**SUPERSTRUCTURE DETAILS - 1**  
 MOLINE ROAD OVER ZUMA CREEK  
 F.A.S. ROUTE 203-SECTION 9BR-M  
 ROCK ISLAND COUNTY  
 STATION 92+92.75  
 STRUCTURE NO. 081-0034

**LIN ENGINEERING, LTD.**  
 20 N. Chestnut  
 217-431-4668  
 Channahon, Illinois 61623  
 FAX: 815-493-4176  
 Designed By: DLS  
 Checked By: WFM  
 Drawn By: JMD  
 Date: 07/05  
 File: 080034.dgn