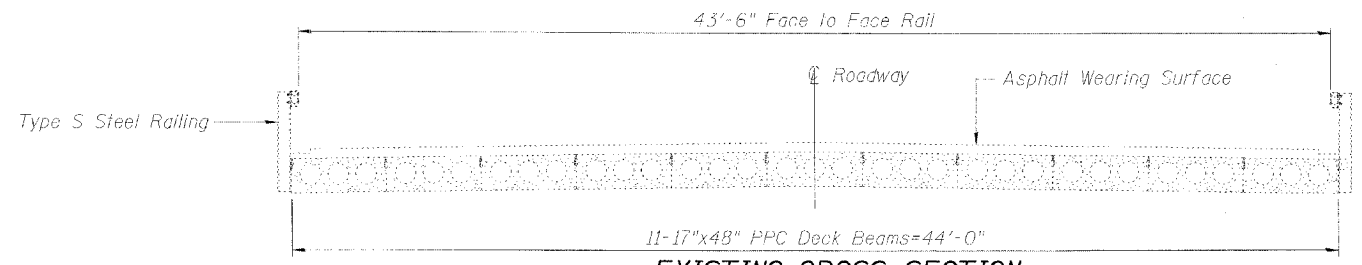


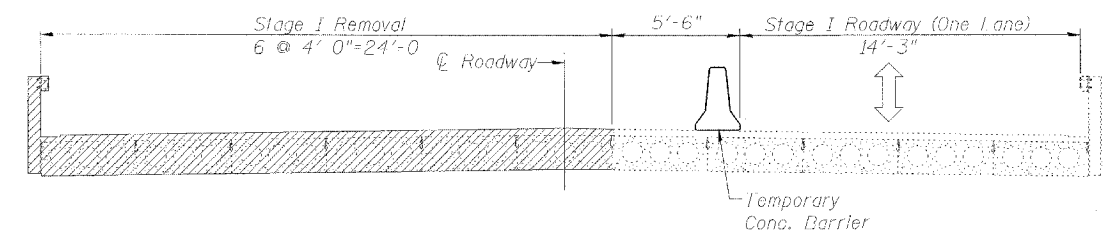
ROUTE NO. FAP RT 68 IL 23)	SECTION 29 BR-1	COUNTY DEKALB	TOTAL SHEETS 25	SHEET NO. 8
FED. ROAD DIST. NO. 7		ILLINOIS	FED. AID PROJECT	

SHEET NO. 2
10 SHEETS

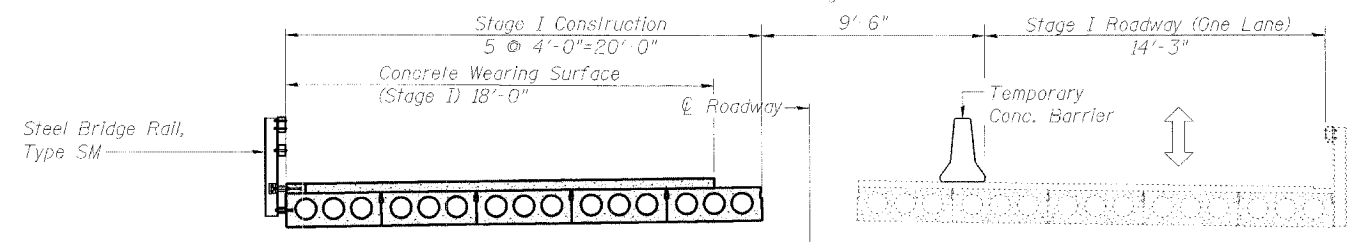
Contract #64A06



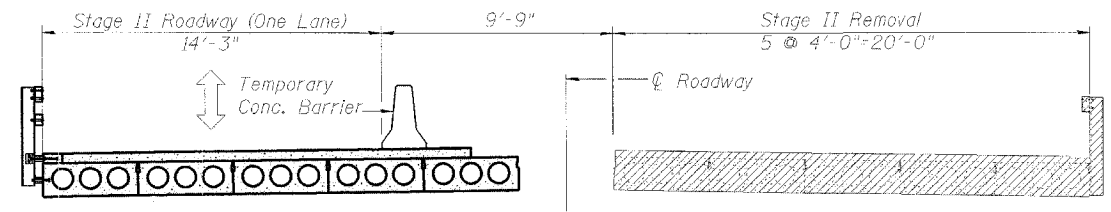
EXISTING CROSS-SECTION
(Looking North)



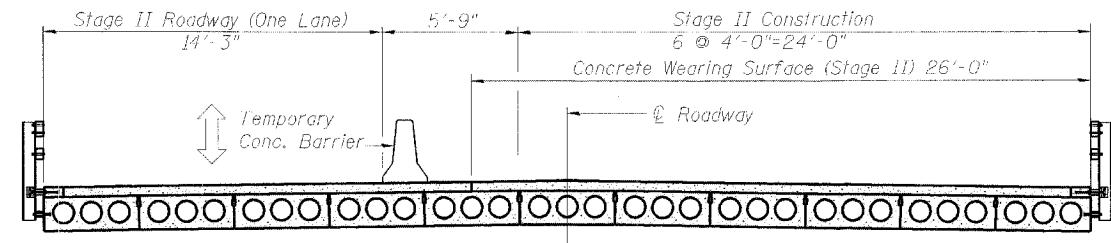
STAGE I REMOVAL
(Looking North)



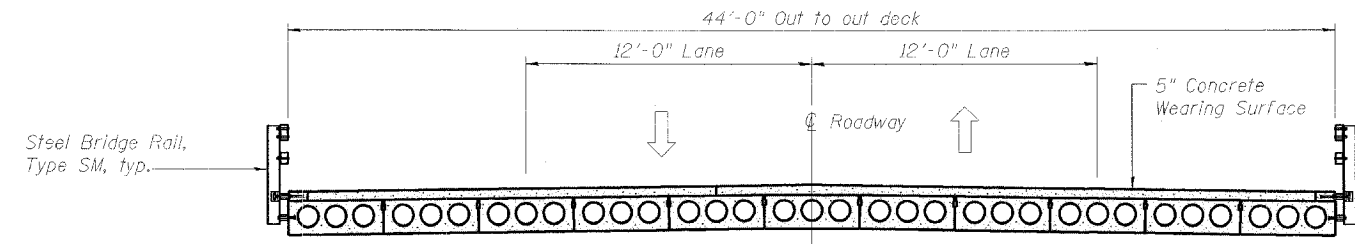
STAGE I CONSTRUCTION
(Looking North)



STAGE II REMOVAL
(Looking North)



STAGE II CONSTRUCTION
(Looking North)



PROPOSED CROSS-SECTION
(Looking North)

TOTAL BILL OF MATERIAL

ITEM	UNIT	SUPER	SUB	TOTAL
Removal of Existing Superstructures	Each	1		1
Precast Prestressed Concrete Deck Beams (17" Depth)	Sq. Ft.	2,380		2,380
Reinforcement Bars, Epoxy Coated	Pound	3,130		3,130
Concrete Wearing Surface, 5"	Sq. Yd.	254		254
Bridge Deck Grooving	Sq. Yd.	249		249
Steel Bridge Rail, Type SM	Foot	109		109
Name Plates	Each	1		1
Bar Splicers	Each	56		56
Formed Concrete Repair, (Depth equal to or less than 5")	Sq. Ft.		187	187
Epoxy Crack Sealing	Foot		117.2	117.2
Protective Coat	Sq. Yd.	266		266

STAGE CONSTRUCTION

F.A.P. ROUTE 68 (IL 23)
SECTION 29 BR-1
DEKALB COUNTY
STATION 876+47.59
STRUCTURE NO. 019-0007



CHAMPAIGN, ILLINOIS
CHICAGO, ILLINOIS
EVANSVILLE, INDIANA
INDIANAPOLIS, INDIANA
KENOSHA, WISCONSIN
SPRING GREEN, WISCONSIN

REVISIONS	
NAME	DATE

NOTES: DIMENSIONAL DATA IS NOT TO BE OBTAINED BY SCALING ANY PORTION OF THIS DRAWING.
DESIGNED BY: S.L.D. PROJECT NO. 102301
DRAWN BY: MEW DATE: 8/25
CHECKED BY: M.M.
APPROVED BY: M.M.
ACTIVITY: DETAILS

DRAWING NUMBER
S-2