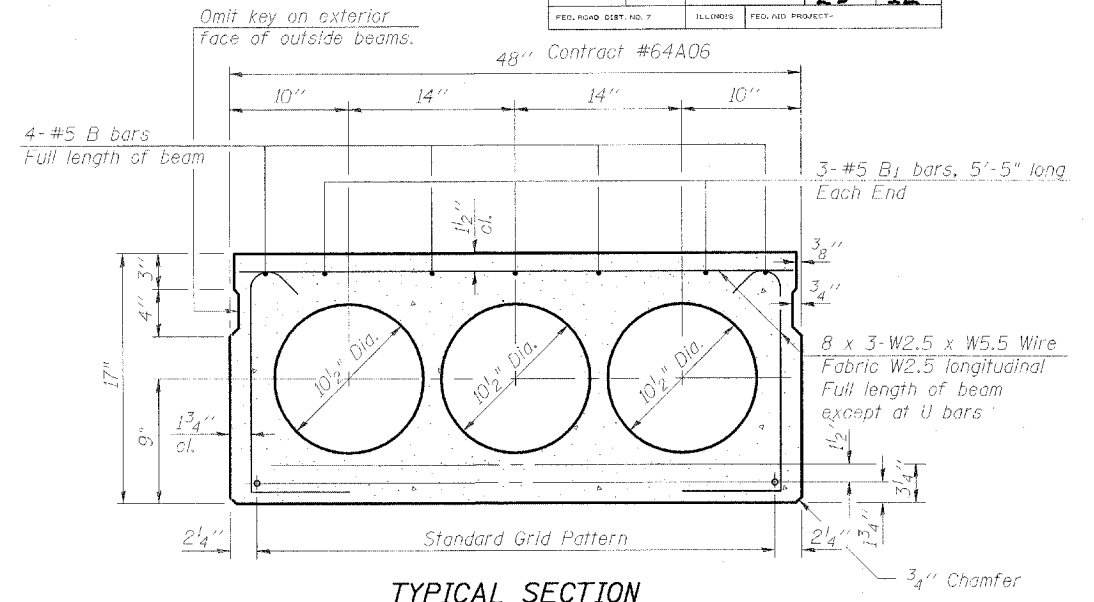


**FABRIC BEARING PAD**  
(Interior)

**FABRIC BEARING PAD**  
(Exterior)

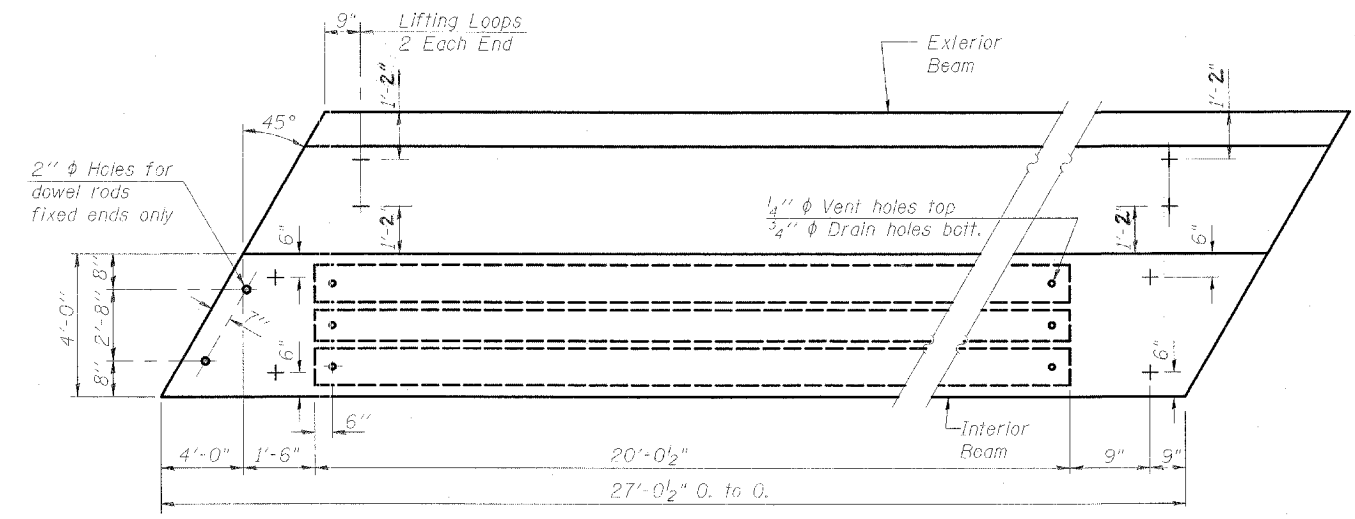
**FIXED**



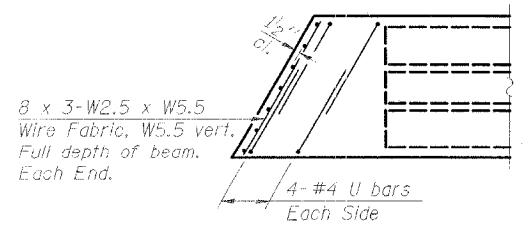
**TYPICAL SECTION**

1/2"  $\phi$  Strands, Each Strand Stressed to 30,900 Lbs.  
8 Strands 1 3/4" up, 4 Strands 3 1/4" up

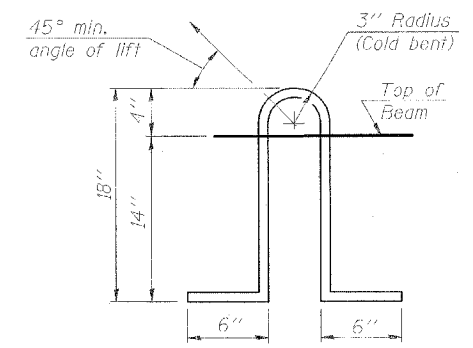
Note:  
Place strands symmetrically about  $\phi$  of beam.



**PLAN**



**END PLAN**



**LIFTING LOOP DETAIL**

**NOTES**

Prestressing steel shall be uncoated high strength, low relaxation 7-wire strand, Grade 270. The nominal diameter shall be 1/2" and the nominal cross-sectional area shall be 0.153 sq. in. Lifting loops shall be 2-1/2"  $\phi$ -270 ksi strands, as shown. Non prestressing steel shall conform to AASHTO M-31 or M-322 Grade 60. The bearing seat surfaces shall be adjusted by shimming to assure firm and even bearing. Two 1/8" fabric adjusting shims of the dimensions of the Exterior Bearing Pad shall be provided for each bearing. Keyway surfaces shall be cleaned to remove form oil or other bond breaking material prior to shipment of the beams. Cleaning shall be done by sandblasting the keyway areas between top of the beam and the bottom edge of the key. Corrosion Inhibitor, as covered in the Special Provisions, shall be used in the concrete for precast prestressed concrete deck beams. Required Release Strength, f'ci, shall be 4,000 p.s.i.

**SUPERSTRUCTURE DETAILS**

F.A.P. ROUTE 68 (IL 23)  
SECTION 29 BR-1  
DEKALB COUNTY  
STATION 876+47.59  
STRUCTURE NO. 019-0007



CHAMPAIGN, ILLINOIS  
CHICAGO, ILLINOIS  
EVANSVILLE, INDIANA  
INDIANAPOLIS, INDIANA  
KENDSHA, WISCONSIN  
SPRING GREEN, WISCONSIN

REVISIONS	
NAME	DATE

DRAWING NUMBER  
**S-6**