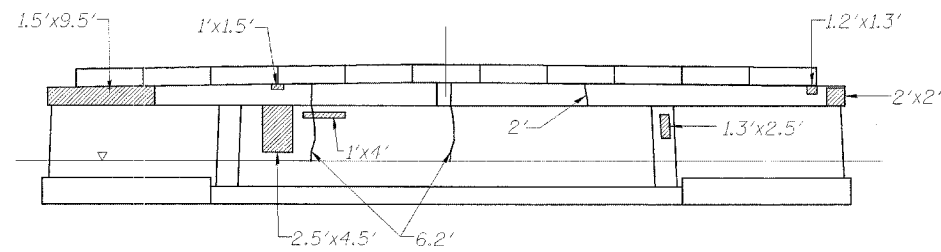
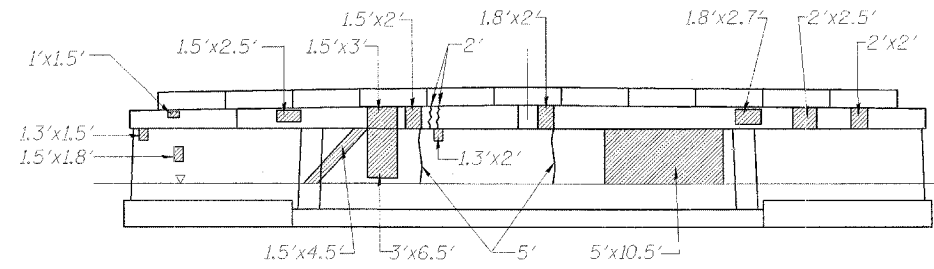


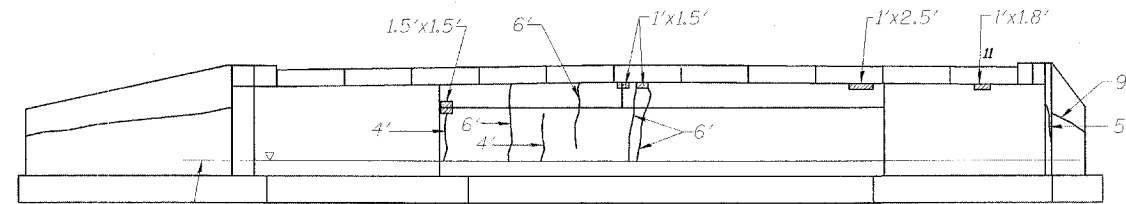
Contract #64A06



PIER ELEVATION
(South face, looking north)

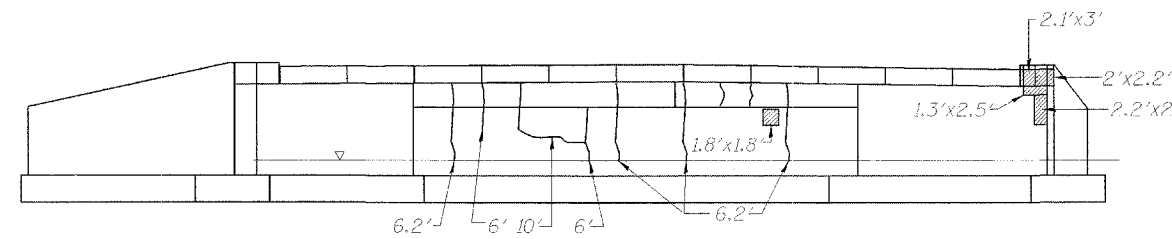


PIER ELEVATION
(North face, looking south)



Water level at time of inspection (Typ.)

SOUTH ABUTMENT
(Looking South)



NORTH ABUTMENT
(Looking North)

LEGEND

Formed Concrete Repair
Depth equal to or less than 5"

Epoxy Crack Sealing

Hairline Crack - Not to be sealed

Note: Crack widths are $\frac{1}{8}'' \pm \frac{1}{16}''$ unless otherwise noted.

BILL OF MATERIAL

ITEM	UNIT	QUANTITY
Epoxy Crack Sealing	Foot	117.2
Formed Concrete Repair (Depth equal to or less than 5")	Sq Ft	187

PIER AND ABUTMENT REPAIRS

F.A.P. ROUTE 68 (IL 23)
SECTION 29 BR-1
DEKALB COUNTY
STATION 876+47.59
STRUCTURE NO. 019-0007



CHAMPAIGN, ILLINOIS
CHICAGO, ILLINOIS
EVANSVILLE, INDIANA
INDIANAPOLIS, INDIANA
KENOSHA, WISCONSIN
SPRING GREEN, WISCONSIN

REVISIONS		DATE	DRAWING NUMBER
NAME			
			S-8