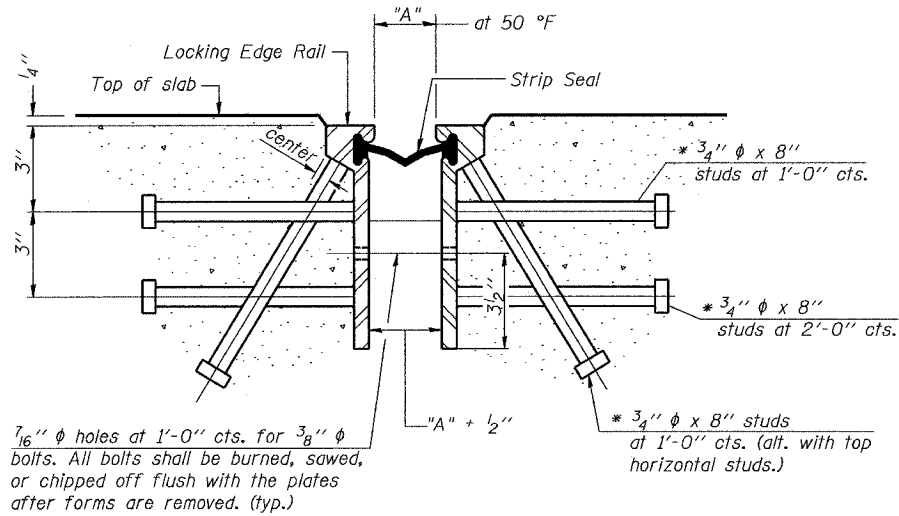


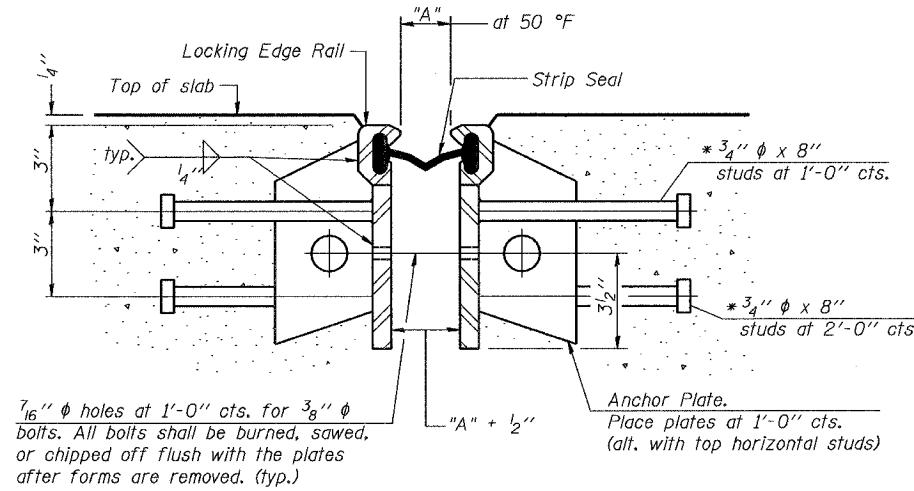
STATE OF ILLINOIS
DEPARTMENT OF TRANSPORTATION

ROUTE NO.	SECTION	COUNTY	SHEETS	SHEET NO.	SHEET NO.
	*	Ogle	40	22	11 SHEETS
FED. ROAD DIST. NO. 7		ILLINOIS	FED. AID PROJECT		

* Section 119BR-3 Contract #64A47



Required Strip Seal rated movement	"A"
1"	1 1/8"
2"	1 3/4"



GENERAL NOTES

The strip seal shall be made continuous and shall have a minimum thickness of 1/4". The configuration of the strip seal shall match the configuration of the Locking Edge Rails.

The height and thickness of the Locking Edge Rails shown are minimum dimensions. The actual configuration of the Locking Edge Rails and matching strip seal may vary from manufacturer to manufacturer. Flanged edge rails will not be allowed.

Locking Edge Rails may be spliced at slope discontinuities and stage construction joints.

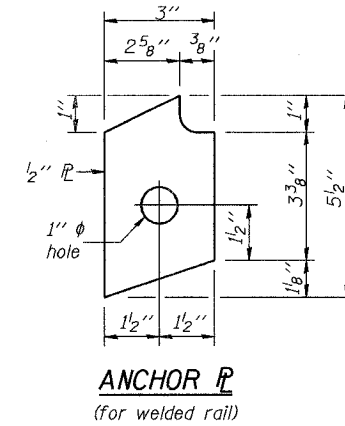
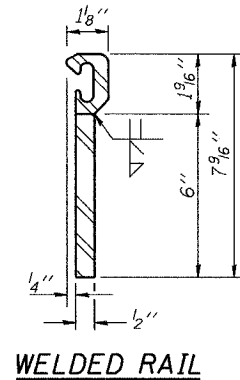
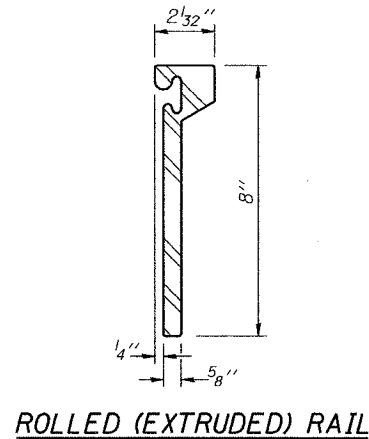
The manufacturer's recommended installation methods shall be followed.

The joint opening and deck dimensions detailed on the superstructure are based on a preformed joint seal. If the contractor elects to use the alternate strip seal joint, the opening and deck dimensions shall be modified according to the dimensions detailed on this sheet. Required modifications shall be made at no additional cost to the State.

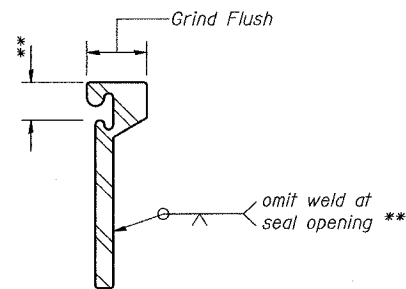
SECTION THRU ROLLED RAIL EXP. JOINT
(180 Studs Required)

* Granular or solid flux filled headed studs conforming to Article 1006.32 of the Std. Specs., automatically end welded.

SECTION THRU WELDED RAIL EXP. JOINT
(110 Studs Required)
(74 Anchor Plates Required)



LOCKING EDGE RAILS



LOCKING EDGE RAIL SPLICE

The inside of the locking edge rail groove shall be free of weld residue.

DESIGNED	SB
CHECKED	RB
DRAWN	BH, BS
CHECKED	SB

**BRIDGE JOINT SYSTEM - EXPANSION
(ALTERNATE-STRIP SEAL)**

F.A.P. 553 (IL 72)
OVER STILLMAN CREEK
SECTION 119BR-3
OGLE COUNTY
STR. NO. 071-0042