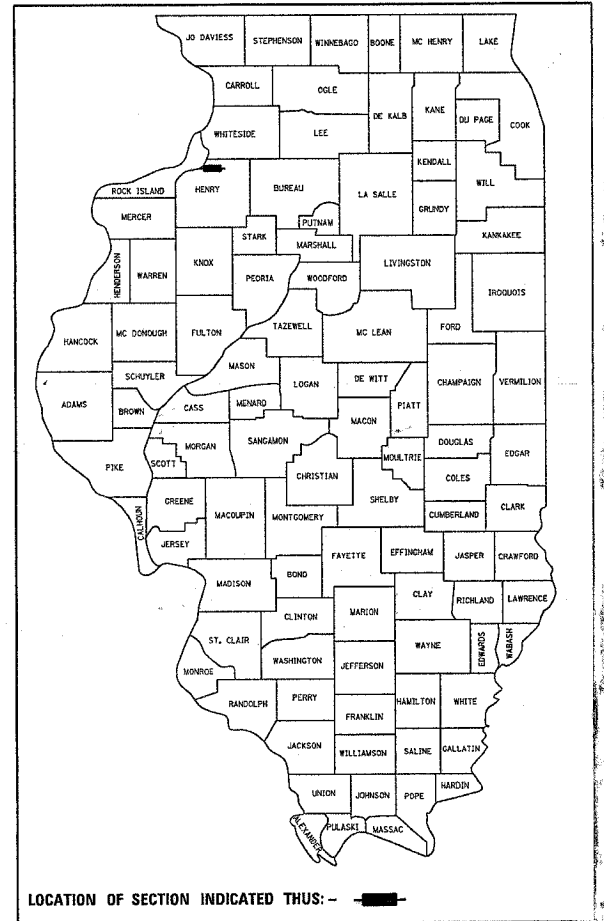


F.A.U. R.T.E.	SECTION	COUNTY	TOTAL SHEETS	SHEET NO.
5862	2BR-1	HENRY	26	1

STATE OF ILLINOIS
DEPARTMENT OF TRANSPORTATION
DIVISION OF HIGHWAYS
**PROPOSED
HIGHWAY PLANS**

FAU ROUTE 5862 (POPPY GARDEN RD)
SECTION 2BR-1
PROJECT ACBHM-5862(001)
HENRY COUNTY
C-92-014-06

D92-072-05



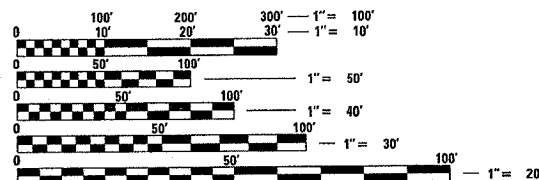
LOCATION OF SECTION INDICATED THUS: - [thick black line] -

INDEX OF SHEETS

- 1 COVER SHEET
- 2-3 SUMMARY OF QUANTITIES
- 4 GENERAL NOTES
- 5 TYPICAL SECTIONS & BUTT-JOINT DETAILS
- 6-7 SCHEDULE OF QUANTITIES
- 8 ROADWAY PLAN SHEETS
- 9 EROSION DETAILS
- 10-11 BRIDGE GENERAL PLAN AND ELEVATION
- 12-13 SUPERSTRUCTURE DETAILS
- 14 ABUTMENT DETAIL
- 15 TYPE SM, STEEL BRIDGE RAIL SIDE MOUNTED
- 16-17 BRIDGE JOINT SYSTEM EXPANSION DETAILS
- 18 DELINEATOR AND POST (37.4)
- 18 WITNESS MARKER FOR PERMANENT SURVEY MARKERS TYPE II (38.4)
- 19 TRAFFIC CONTROL FOR ROAD CLOSURE (40.1)
- 20-21 TYPICAL PAVEMENT MARKINGS (41.1)
- 22-26 CROSS SECTIONS

STATE STANDARDS

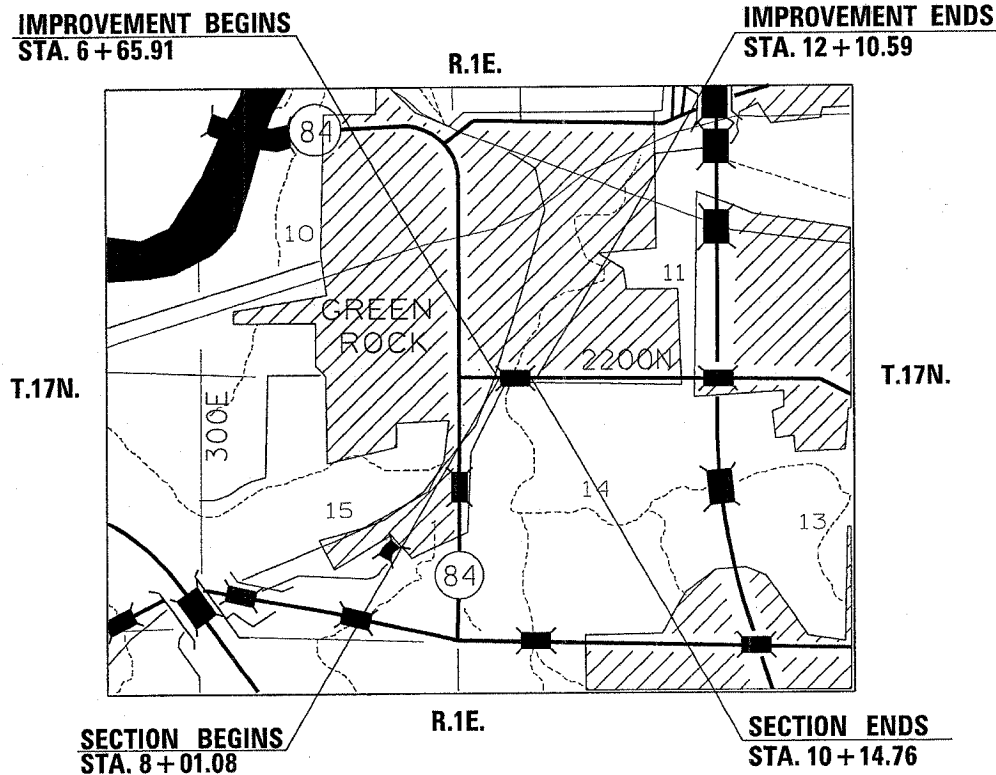
- 001001 AREAS OF REINFORCEMENT
- 001006 DECIMAL OF AN INCH AND A FOOT
- 280001-02 TEMPORARY EROSION CONTROL SYSTEMS
- 515001-02 NAME PLATE FOR BRIDGES
- 630001-05 STEEL PLATE BEAM GUARDRAIL
- 630301-03 SHOULDER WIDENING FOR TYPE 1 GUARDRAIL TERMINALS
- 631032-01 TRAFFIC BARRIER TERMINAL, TYPE 6A
- 635001 DELINEATORS
- 635006-02 REFLECTOR AND TERMINAL REPLACEMENT
- 635011-01 REFLECTOR MARKER AND MOUNTING DETAILS
- 667101 PERMANENT SURVEY MARKERS
- 701301-02 TRAFFIC CONTROL
- 702001-05 TRAFFIC CONTROL DEVICES
- 720011 METAL POST
- 780001-01 TYPICAL PAVEMENT MARKINGS



FULL SIZE PLANS HAVE BEEN PREPARED USING STANDARD ENGINEERING SCALES. REDUCED SIZED PLANS WILL NOT CONFORM TO STANDARD SCALES. IN MAKING MEASUREMENTS ON REDUCED PLANS, THE ABOVE SCALES MAY BE USED.

J.U.L.I.E.
JOINT UTILITY LOCATION INFORMATION FOR EXCAVATION
1-800-892-0123

COLONA TOWNSHIP SECTION - 11,14



NET LENGTH OF PROJECT = 213.68 LIN. FT = 0.041 MILES
GROSS LENGTH OF PROJECT = 213.68 LIN. FT = 0.041 MILES

PROJECT ENGINEER: ROBERT WAGNER

SENIOR ENGINEER: THOMAS HALLA

PHONE: (815) 284-5993

CONTRACT NO. 64B10

FAU ROUTE 5862 (POPPY GARDEN ROAD) SECTION 2BR - 1 HENRY COUNTY

STATE OF ILLINOIS
DEPARTMENT OF TRANSPORTATION
DIVISION OF HIGHWAYS

SUBMITTED September 6, 2005
Gregory Z. Mankowski
DEPUTY DIRECTOR OF HIGHWAYS, REGION ENGINEER

October 14, 2005
Mike Stone
ENGINEER OF DESIGN AND ENVIRONMENT

October 14, 2005
Eric E. Kern
DEPUTY DIRECTOR OF HIGHWAYS, CHIEF ENGINEER

PRINTED BY THE AUTHORITY OF THE STATE OF ILLINOIS