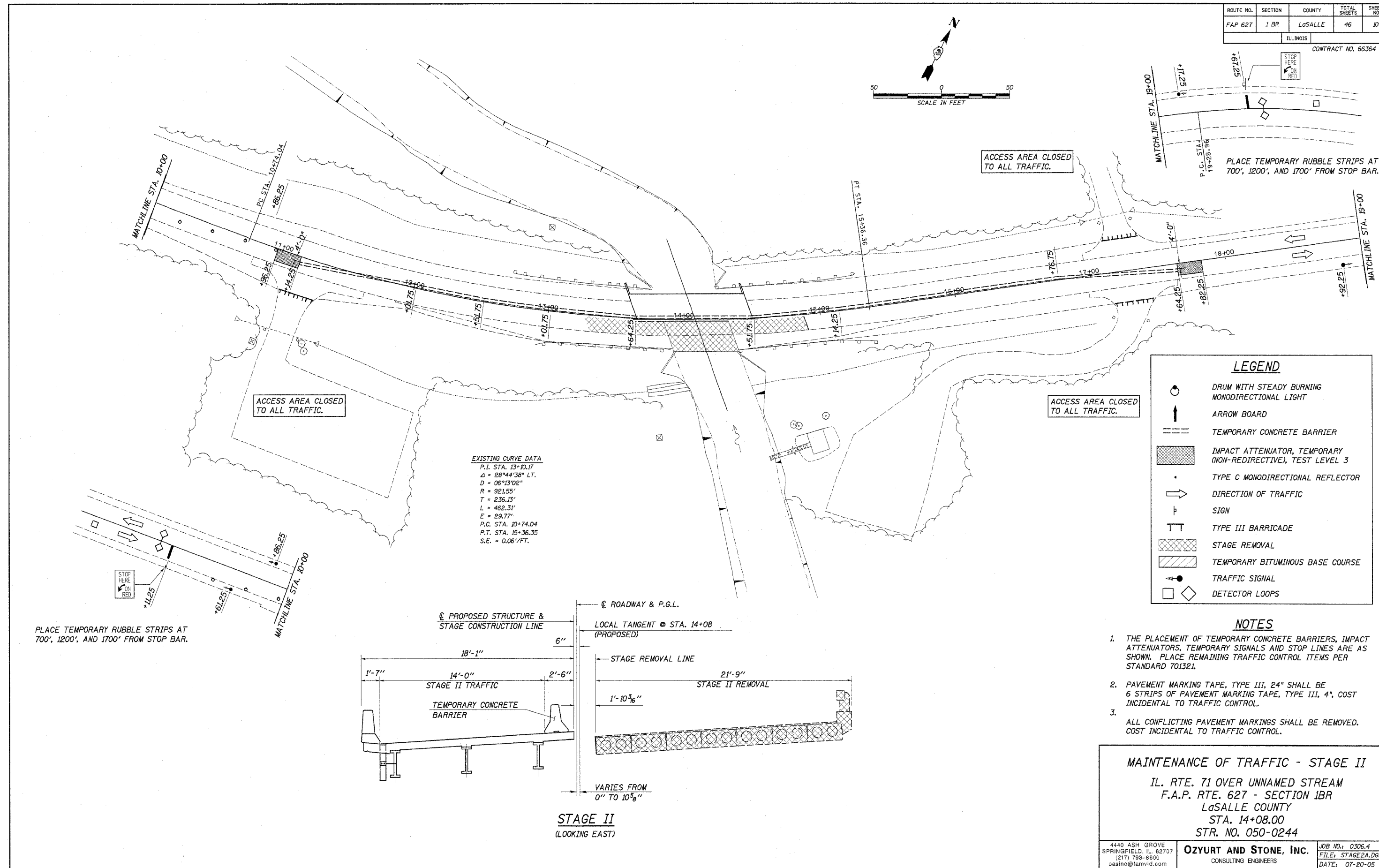


ROUTE NO.	SECTION	COUNTY	TOTAL SHEETS	SHEET NO.
FAP 627	1 BR	LaSALLE	46	10

ILLINOIS CONTRACT NO. 66364



EXISTING CURVE DATA
 P.I. STA. 13+10.17
 $\Delta = 28^{\circ}44'38''$ LT.
 $D = 06^{\circ}13'02''$
 $R = 921.55'$
 $T = 236.13'$
 $L = 462.31'$
 $E = 29.77'$
 P.C. STA. 10+74.04
 P.T. STA. 15+36.35
 $S.E. = 0.06'/FT.$

ACCESS AREA CLOSED TO ALL TRAFFIC.

ACCESS AREA CLOSED TO ALL TRAFFIC.

ACCESS AREA CLOSED TO ALL TRAFFIC.

PLACE TEMPORARY RUBBLE STRIPS AT 700', 1200', AND 1700' FROM STOP BAR.

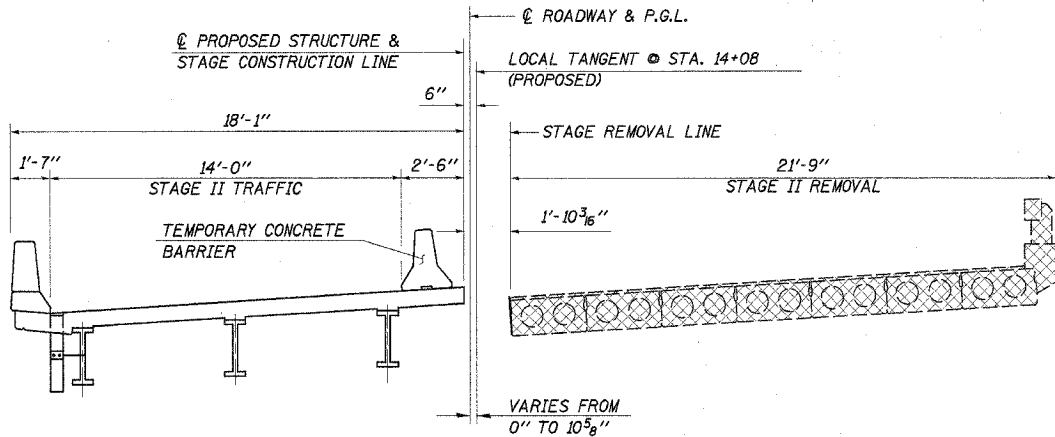
PLACE TEMPORARY RUBBLE STRIPS AT 700', 1200', AND 1700' FROM STOP BAR.

LEGEND

	DRUM WITH STEADY BURNING MONODIRECTIONAL LIGHT
	ARROW BOARD
	TEMPORARY CONCRETE BARRIER
	IMPACT ATTENUATOR, TEMPORARY (NON-REDIRECTIVE), TEST LEVEL 3
	TYPE C MONODIRECTIONAL REFLECTOR
	DIRECTION OF TRAFFIC
	SIGN
	TYPE III BARRICADE
	STAGE REMOVAL
	TEMPORARY BITUMINOUS BASE COURSE
	TRAFFIC SIGNAL
	DETECTOR LOOPS

NOTES

1. THE PLACEMENT OF TEMPORARY CONCRETE BARRIERS, IMPACT ATTENUATORS, TEMPORARY SIGNALS AND STOP LINES ARE AS SHOWN. PLACE REMAINING TRAFFIC CONTROL ITEMS PER STANDARD 701321.
2. PAVEMENT MARKING TAPE, TYPE III, 24" SHALL BE 6 STRIPS OF PAVEMENT MARKING TAPE, TYPE III, 4", COST INCIDENTAL TO TRAFFIC CONTROL.
3. ALL CONFLICTING PAVEMENT MARKINGS SHALL BE REMOVED. COST INCIDENTAL TO TRAFFIC CONTROL.



STAGE II
(LOOKING EAST)

MAINTENANCE OF TRAFFIC - STAGE II

IL. RTE. 71 OVER UNNAMED STREAM
 F.A.P. RTE. 627 - SECTION 1BR
 LaSALLE COUNTY
 STA. 14+08.00
 STR. NO. 050-0244

4440 ASH GROVE SPRINGFIELD, IL 62707 (217) 798-8800 oasinc@famvid.com	OZYURT AND STONE, Inc. CONSULTING ENGINEERS	JOB NO.: 0306.4 FILE: STAGE2A.DGN DATE: 07-20-05
--	---	--