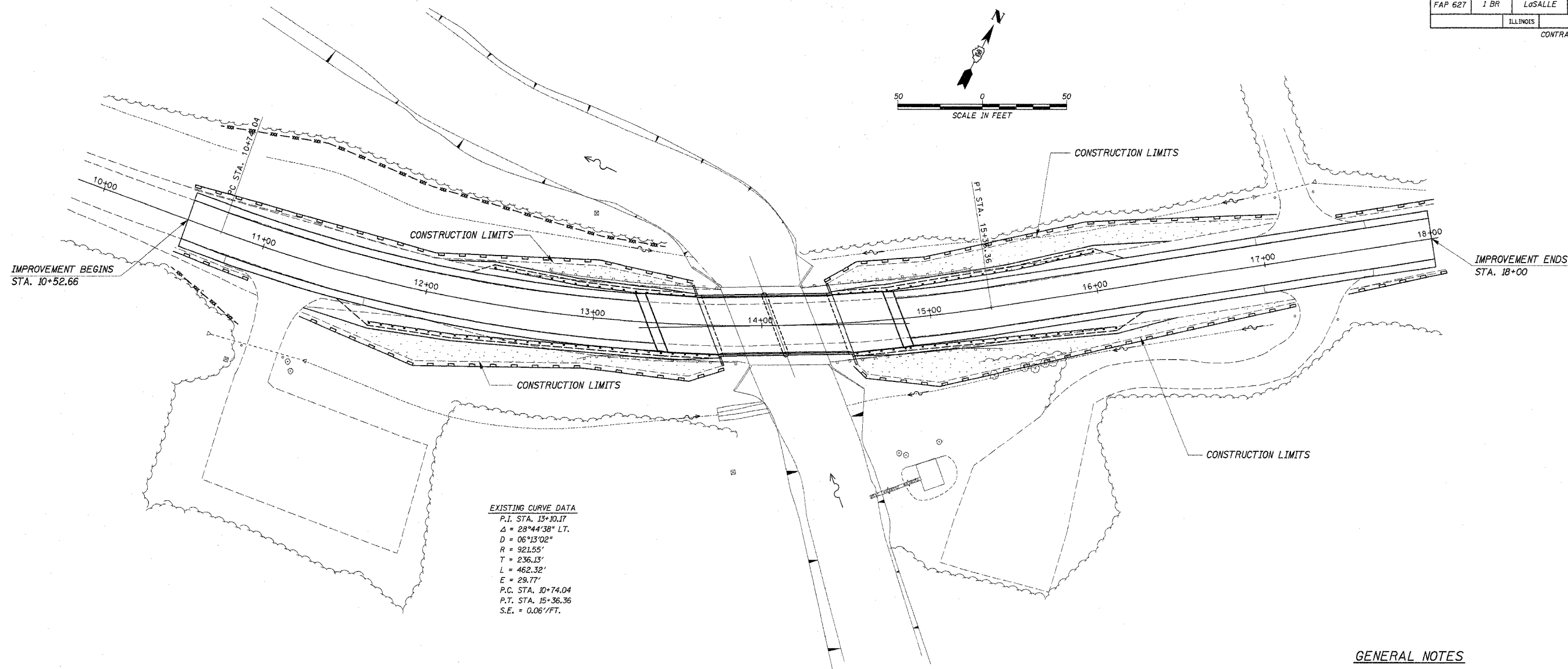


ROUTE NO.	SECTION	COUNTY	TOTAL SHEETS	SHEET NO.
FAP 627	1 BR	LoSALLE	46	12

ILLINOIS CONTRACT NO. 66364



EXISTING CURVE DATA
 P.I. STA. 13+10.17
 $\Delta = 28^{\circ}44'38''$ LT.
 $D = 06^{\circ}13'02''$
 $R = 921.55'$
 $T = 236.13'$
 $L = 462.32'$
 $E = 29.77'$
 P.C. STA. 10+74.04
 P.T. STA. 15+36.36
 $S.E. = 0.06'/FT.$

LEGEND FOR STORM WATER POLLUTION PREVENTION PLAN

ITEM	SYMBOL
PERIMETER EROSION BARRIER	
TEMPORARY EROSION CONTROL SEEDINGS	
TEMPORARY FENCE	

**ESTIMATED QUANTITIES
TEMPORARY**

ITEM	UNIT	QUANTITY
PERIMETER EROSION BARRIER	FOOT	1268
TEMPORARY EROSION CONTROL SEEDINGS	POUND	18
MULCH, METHOD 1	ACRE	0.18
TEMPORARY FENCE	FOOT	327

**ESTIMATED QUANTITIES
PERMANENT**

ITEM	UNIT	QUANTITY
SEEDING, CLASS 2	ACRE	0.18
NITROGEN FERTILIZER NUTRIENTS	POUND	18
PHOSPHORUS FERTILIZER NUTRIENTS	POUND	18
POTASSIUM FERTILIZER NUTRIENTS	POUND	18
MULCH, METHOD 2	ACRE	0.18
* STONE RIPRAP, CLASS A5	SQ YD	385

*SEE SHEET 15 OF 40 FOR
PLACEMENT OF STONE RIPRAP.

GENERAL NOTES

THESE ITEMS ARE ESTIMATED ONLY AND THERE WILL BE NO ADJUSTMENT IN UNIT PRICE DUE TO A CHANGE IN PLAN QUANTITY.

ALL ITEMS SHALL BE CONSTRUCTED AS SHOWN ON THIS SHEET, ON STANDARD 280001, AND AS DIRECTED BY THE ENGINEER.

EROSION CONTROL PLAN

IL. RTE. 71 OVER UNNAMED STREAM
 F.A.P. RTE. 627 - SECTION 1BR
 LoSALLE COUNTY
 STA. 14+08.00
 STR. NO. 050-0244

4440 ASH GROVE
 SPRINGFIELD, IL 62707
 (217) 798-8800
 oasinc@famvid.com

OZYURT AND STONE, INC.
 CONSULTING ENGINEERS

JOB NO.: 0306.4
 FILE: ECPOLDGN
 DATE: 07-20-05