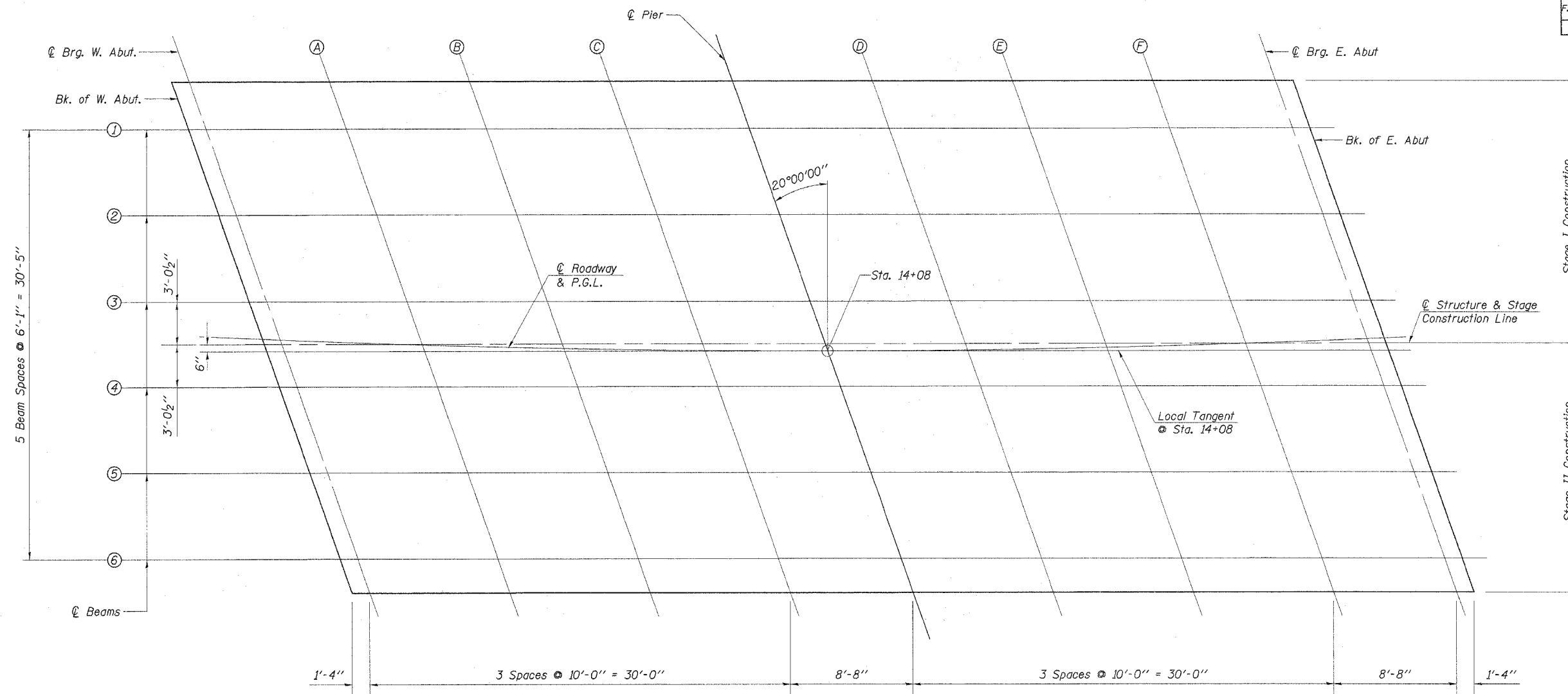
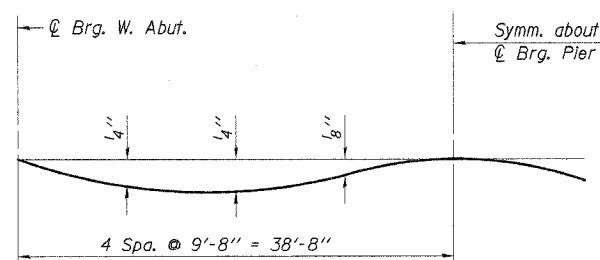


ROUTE NO.	SECTION	COUNTY	TOTAL SHEETS	SHEET NO.
F.A.P. 627	1BR	LaSALLE	46	18
ILLINOIS				

CONTRACT NO. 66364  
Sheet 4 of 20



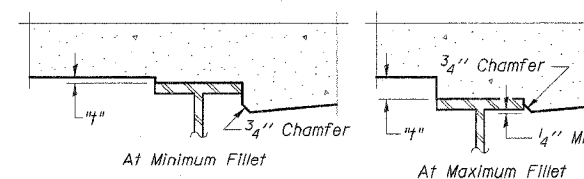
**PLAN**



**DEAD LOAD DEFLECTION DIAGRAM**

(Includes weight of concrete only.)

Note: The above deflections are not to be used in the field if the engineer is working from the grade elevations adjusted for dead load deflections as shown on Sheet 5 of 20.



**FILLET HEIGHTS**

To determine "t": After all structural steel has been erected, elevations of the top flanges of the beams shall be taken at intervals shown on above. These elevations subtracted from the "Theoretical Grade Elevations Adjusted for Dead Load Deflection" shown on Sheet 5 of 20, minus slab thickness, equals the fillet heights "t" above top flange of beams.

DESIGNED	P.S.L.
CHECKED	A.R.K. & F.J.S.
DRAWN	K.T.R.
CHECKED	P.S.L. & A.R.K.

<b>TOP OF SLAB ELEVATIONS</b>	
IL. RTE. 71 OVER UNNAMED STREAM F.A.P. ROUTE 627 - SECTION 1BR LaSALLE COUNTY STA. 14+08.00 STR. NO. 050-0244	
4440 ASH GROVE SPRINGFIELD, IL 62711 (217) 793-8800 oasinc@tamvid.com	<b>OZYURT AND STONE, INC.</b> CONSULTING ENGINEERS
JOB NO.: 0306-4 FILE: SLABOLDGN DATE: 08-31-04	