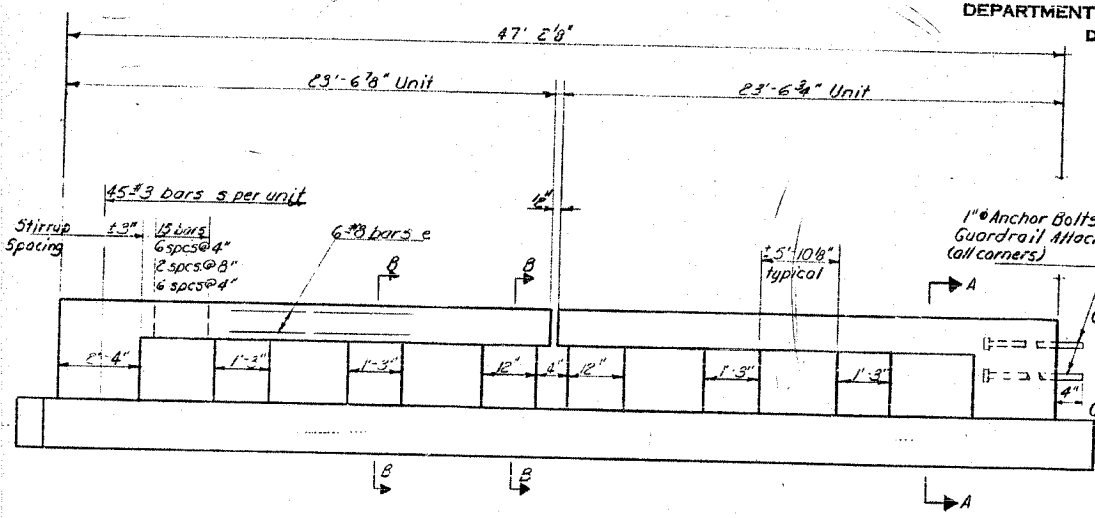


STATE OF ILLINOIS  
DEPARTMENT OF PUBLIC WORKS & BUILDINGS  
DIVISION OF HIGHWAYS

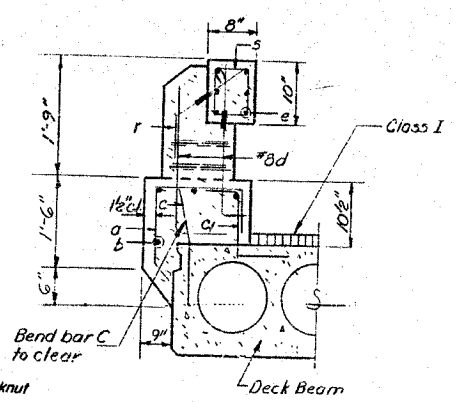
PROJECT NO.	SECTION	TOTAL SHEETS	SHEET NO.
P.A. 8	FBR LASALLE	44	17
DESIGNED BY	DRAWN BY	CHECKED BY	APPROVED BY



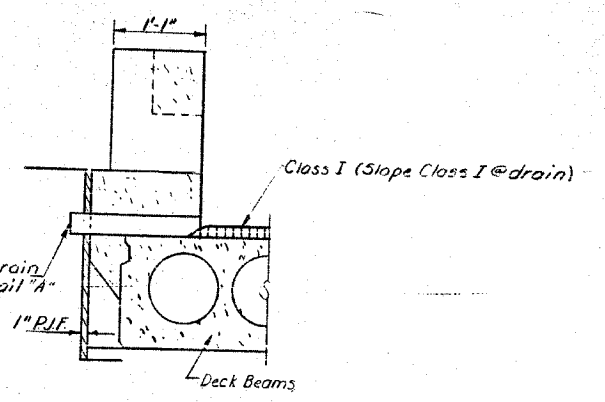
ELEVATION OF RAIL  
Use Standard Railing Details #2070 RD as Modified

Note: Curb Reinforcement details and quantities shown on sheet #2

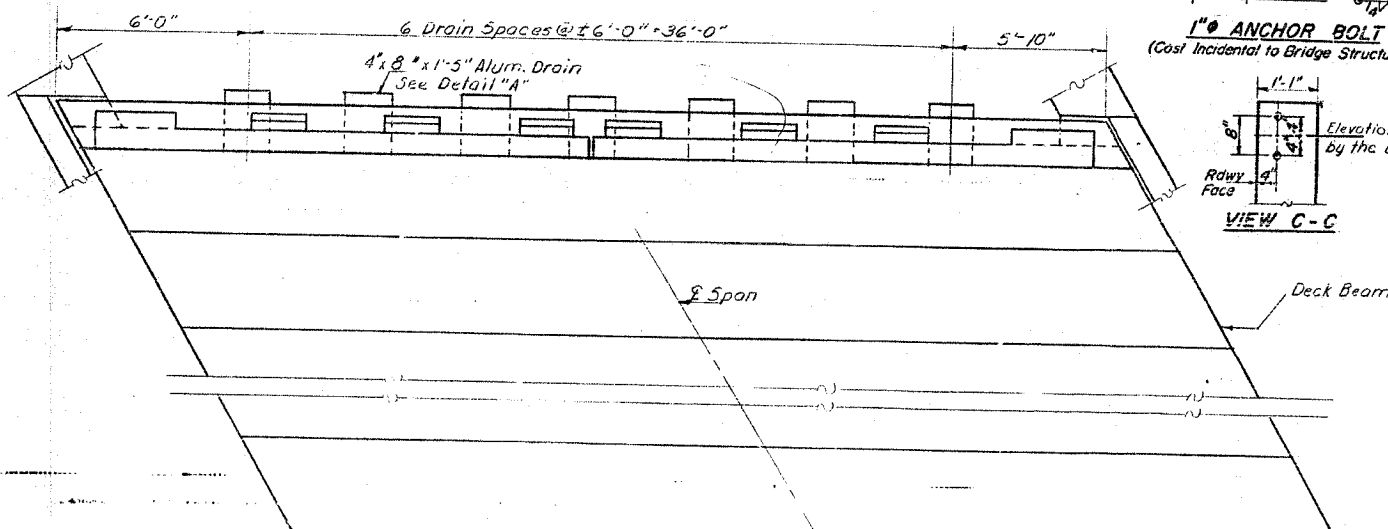
Note: Aluminum Drains are required only on North (Low side) edge of deck.



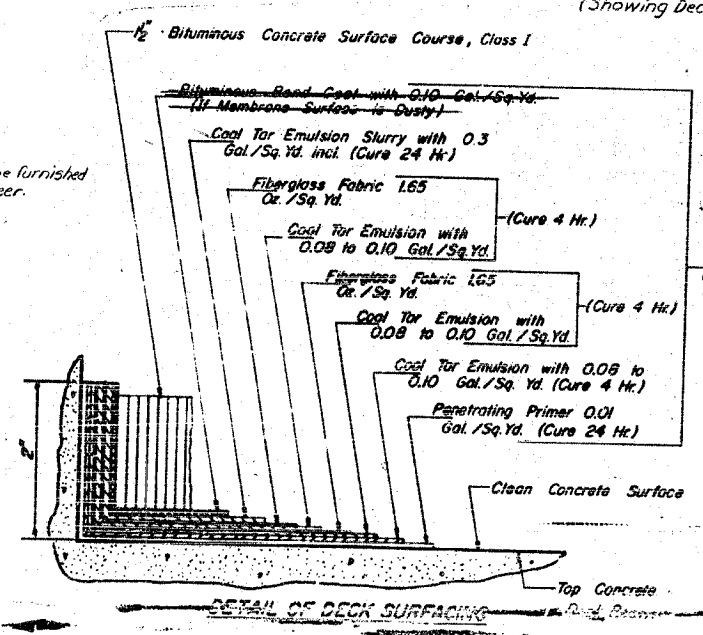
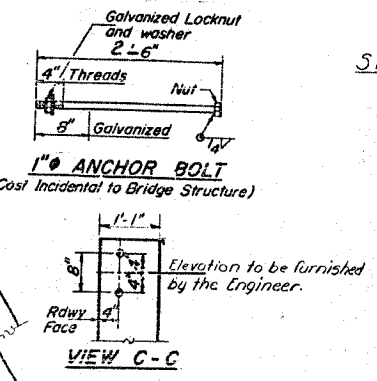
SECTION B-B



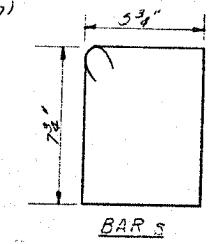
SECTION A-A  
(Showing Deck Drain)



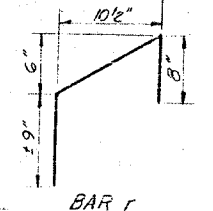
PLAN OF RAIL



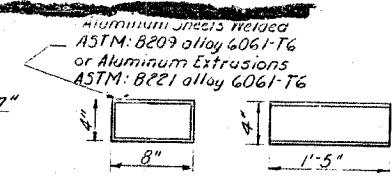
DETAIL OF DECK SURFACING



BAR S



BAR r



DETAIL A

Cost of Aluminum Drains shall be incidental to Class I Concrete

HANDRAIL BILL OF MATERIAL

1	24	3/4	3.125
2	96	#8	3.2
3	24	#4	1.25
4	36	#4	2.6
5	180	#3	2.11
Reinforcement Bars			Lbs. 2530
Handrail Concrete			Cu. Yd. 3.0

HANDRAIL AND SUPERSTRUCTURE DETAILS  
S.B.I. RT. 7A SEC. I-BR  
LA SALLE COUNTY  
STA. 14+08.00

DESIGNED	James C. Coyne	EXAMINED	[Signature]
CHECKED	[Signature]	PASSED	[Signature]
DRAWN	Ben Robinson	APPROVED	[Signature]
CHECKED	[Signature]		

OCT 15 1969