

F.A.S. RTE	SECTION	COUNTY	TOTAL SHEETS	SHEET NO
1317	109 BRN	KANKAKEE	58	14
STA.		TO STA.		
FED. ROAD DIST. NO.		ILLINOIS	FED. AID PROJECT	

**S.W. 1/4 OF SECTION 15, TOWNSHIP 31 NORTH, RANGE 11 EAST. OF THE 3RD PRINCIPAL MERIDIAN**

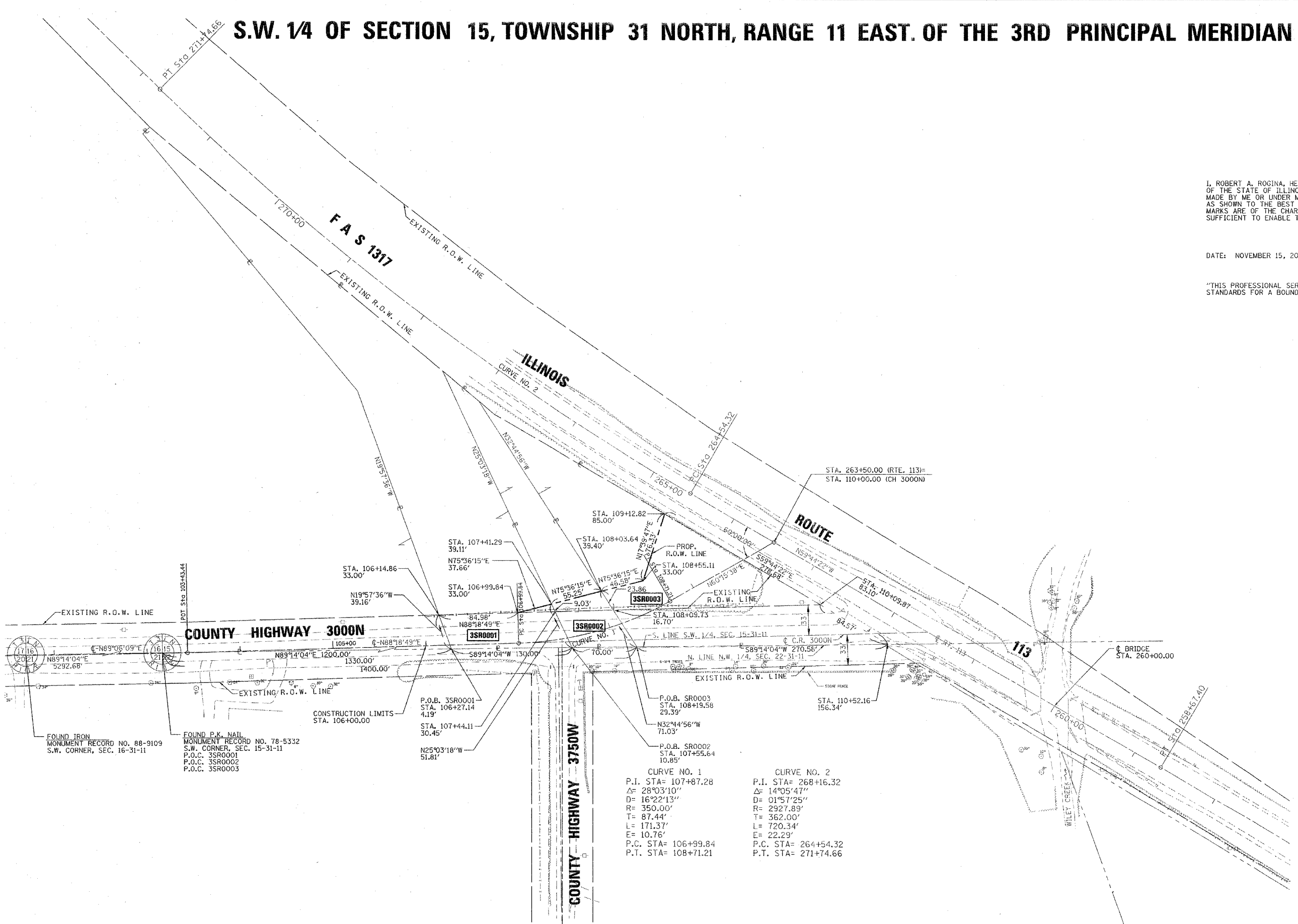


I, ROBERT A. ROGINA, HEREBY CERTIFY THAT I AM A PROFESSIONAL LAND SURVEYOR OF THE STATE OF ILLINOIS, THAT THE SURVEY OF PROPOSED ILLINOIS RTE 113 WAS MADE BY ME OR UNDER MY DIRECTION AND THAT THE SURVEY IS TRUE AND COMPLETE AS SHOWN TO THE BEST OF MY KNOWLEDGE AND BELIEF THAT ALL MONUMENTS AND MARKS ARE OF THE CHARACTER AND OCCUPY THE POSITION SHOWN THEREON, AND ARE SUFFICIENT TO ENABLE THE SURVEY TO BE RETRACED.

DATE: NOVEMBER 15, 2004

*Robert A. Rogina*  
 ROBERT A. ROGINA, I.P.L.S. 2017  
 LICENSE EXPIRES: 11/30/04

"THIS PROFESSIONAL SERVICE CONFORMS TO THE CURRENT ILLINOIS MINIMUM STANDARDS FOR A BOUNDARY SURVEY."



**PARCEL 3SR0001**

A. EVERETT PATTON  
 TOTAL HOLDING: 1.168 AC±  
 TOTAL R.O.W. REQUIRED: 0.116 AC± (5046 SQ. FT.)  
 AREA IN EXIST. R.O.W.: 0.112 AC± (4879 SQ. FT.)  
 NET R.O.W.: 0.004 AC± (167 SQ. FT.)  
 REMAINDER: 1.052 AC±

**PARCEL 3SR0002**

AUGUST E. & PEARLE PETERSON, ET AL  
 TOTAL HOLDING: 0.297 AC±  
 TOTAL R.O.W. REQUIRED: 0.081 AC± (3515 SQ. FT.)  
 AREA IN EXIST. R.O.W.: 0.060 AC± (2630 SQ. FT.)  
 NET R.O.W.: 0.021 AC± (885 SQ. FT.)  
 REMAINDER: 0.216 AC±

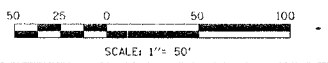
**PARCEL 3SR0003**

A. EVERETT PATTON  
 TOTAL HOLDING: 0.810 AC±  
 TOTAL R.O.W. REQUIRED: 0.496 AC± (21606 SQ. FT.)  
 AREA IN EXIST. R.O.W.: 0.239 AC± (10411 SQ. FT.)  
 NET R.O.W.: 0.257 AC± (11195 SQ. FT.)  
 REMAINDER: 0.314 AC±

**CURVE NO. 1**  
 P.I. STA= 107+87.28  
 Δ= 28°03'10"  
 D= 16°22'13"  
 R= 350.00'  
 T= 87.44'  
 L= 171.37'  
 E= 10.76'  
 P.C. STA= 106+99.84  
 P.T. STA= 108+71.21

**CURVE NO. 2**  
 P.I. STA= 268+16.32  
 Δ= 14°05'47"  
 D= 01°57'25"  
 R= 2927.89'  
 T= 362.00'  
 L= 720.34'  
 E= 22.29'  
 P.C. STA= 264+54.32  
 P.T. STA= 271+74.66

BEARINGS BASED ON ILLINOIS STATE PLANE COORDINATES EAST ZONE (NAD 83)



**RIGHT OF WAY PLANS**

ROUTE	FAS 1317 (IL 113)
SECTION	109BR.N.
PROJECT	
COUNTY	KANKAKEE
JOB NUMBER	R-93-004-04
STATION	106+00.00 TO 110+00.00
SHEET	1 OF 1 SCALE 1" = 50'

**N.W. 1/4 OF SECTION 22, TOWNSHIP 31 NORTH, RANGE 11 EAST. OF THE 3RD PRINCIPAL MERIDIAN**

NO.	DATE	DESCRIPTION	BY
1	11/15/04	PER 1001 REVIEW	MCS/JAK
2	10/23/04	PER 1001 REVIEW	MCS/JAK
3	09/21/04	PER 1001 REVIEW	MCS/JAK
4	09/21/04	PER 1001 REVIEW	MCS/JAK
5	09/21/04	PER 1001 REVIEW	MCS/JAK
6	09/21/04	PER 1001 REVIEW	MCS/JAK
7	09/21/04	PER 1001 REVIEW	MCS/JAK
8	09/21/04	PER 1001 REVIEW	MCS/JAK
9	09/21/04	PER 1001 REVIEW	MCS/JAK
10	09/21/04	PER 1001 REVIEW	MCS/JAK
11	09/21/04	PER 1001 REVIEW	MCS/JAK
12	09/21/04	PER 1001 REVIEW	MCS/JAK
13	09/21/04	PER 1001 REVIEW	MCS/JAK
14	09/21/04	PER 1001 REVIEW	MCS/JAK
15	09/21/04	PER 1001 REVIEW	MCS/JAK
16	09/21/04	PER 1001 REVIEW	MCS/JAK
17	09/21/04	PER 1001 REVIEW	MCS/JAK
18	09/21/04	PER 1001 REVIEW	MCS/JAK
19	09/21/04	PER 1001 REVIEW	MCS/JAK
20	09/21/04	PER 1001 REVIEW	MCS/JAK
21	09/21/04	PER 1001 REVIEW	MCS/JAK
22	09/21/04	PER 1001 REVIEW	MCS/JAK
23	09/21/04	PER 1001 REVIEW	MCS/JAK
24	09/21/04	PER 1001 REVIEW	MCS/JAK
25	09/21/04	PER 1001 REVIEW	MCS/JAK
26	09/21/04	PER 1001 REVIEW	MCS/JAK
27	09/21/04	PER 1001 REVIEW	MCS/JAK
28	09/21/04	PER 1001 REVIEW	MCS/JAK
29	09/21/04	PER 1001 REVIEW	MCS/JAK
30	09/21/04	PER 1001 REVIEW	MCS/JAK
31	09/21/04	PER 1001 REVIEW	MCS/JAK
32	09/21/04	PER 1001 REVIEW	MCS/JAK
33	09/21/04	PER 1001 REVIEW	MCS/JAK
34	09/21/04	PER 1001 REVIEW	MCS/JAK
35	09/21/04	PER 1001 REVIEW	MCS/JAK
36	09/21/04	PER 1001 REVIEW	MCS/JAK
37	09/21/04	PER 1001 REVIEW	MCS/JAK
38	09/21/04	PER 1001 REVIEW	MCS/JAK
39	09/21/04	PER 1001 REVIEW	MCS/JAK
40	09/21/04	PER 1001 REVIEW	MCS/JAK
41	09/21/04	PER 1001 REVIEW	MCS/JAK
42	09/21/04	PER 1001 REVIEW	MCS/JAK
43	09/21/04	PER 1001 REVIEW	MCS/JAK
44	09/21/04	PER 1001 REVIEW	MCS/JAK
45	09/21/04	PER 1001 REVIEW	MCS/JAK
46	09/21/04	PER 1001 REVIEW	MCS/JAK
47	09/21/04	PER 1001 REVIEW	MCS/JAK
48	09/21/04	PER 1001 REVIEW	MCS/JAK
49	09/21/04	PER 1001 REVIEW	MCS/JAK
50	09/21/04	PER 1001 REVIEW	MCS/JAK
51	09/21/04	PER 1001 REVIEW	MCS/JAK
52	09/21/04	PER 1001 REVIEW	MCS/JAK
53	09/21/04	PER 1001 REVIEW	MCS/JAK
54	09/21/04	PER 1001 REVIEW	MCS/JAK
55	09/21/04	PER 1001 REVIEW	MCS/JAK
56	09/21/04	PER 1001 REVIEW	MCS/JAK
57	09/21/04	PER 1001 REVIEW	MCS/JAK
58	09/21/04	PER 1001 REVIEW	MCS/JAK
59	09/21/04	PER 1001 REVIEW	MCS/JAK
60	09/21/04	PER 1001 REVIEW	MCS/JAK
61	09/21/04	PER 1001 REVIEW	MCS/JAK
62	09/21/04	PER 1001 REVIEW	MCS/JAK
63	09/21/04	PER 1001 REVIEW	MCS/JAK
64	09/21/04	PER 1001 REVIEW	MCS/JAK
65	09/21/04	PER 1001 REVIEW	MCS/JAK
66	09/21/04	PER 1001 REVIEW	MCS/JAK
67	09/21/04	PER 1001 REVIEW	MCS/JAK
68	09/21/04	PER 1001 REVIEW	MCS/JAK
69	09/21/04	PER 1001 REVIEW	MCS/JAK
70	09/21/04	PER 1001 REVIEW	MCS/JAK
71	09/21/04	PER 1001 REVIEW	MCS/JAK
72	09/21/04	PER 1001 REVIEW	MCS/JAK
73	09/21/04	PER 1001 REVIEW	MCS/JAK
74	09/21/04	PER 1001 REVIEW	MCS/JAK
75	09/21/04	PER 1001 REVIEW	MCS/JAK
76	09/21/04	PER 1001 REVIEW	MCS/JAK
77	09/21/04	PER 1001 REVIEW	MCS/JAK
78	09/21/04	PER 1001 REVIEW	MCS/JAK
79	09/21/04	PER 1001 REVIEW	MCS/JAK
80	09/21/04	PER 1001 REVIEW	MCS/JAK
81	09/21/04	PER 1001 REVIEW	MCS/JAK
82	09/21/04	PER 1001 REVIEW	MCS/JAK
83	09/21/04	PER 1001 REVIEW	MCS/JAK
84	09/21/04	PER 1001 REVIEW	MCS/JAK
85	09/21/04	PER 1001 REVIEW	MCS/JAK
86	09/21/04	PER 1001 REVIEW	MCS/JAK
87	09/21/04	PER 1001 REVIEW	MCS/JAK
88	09/21/04	PER 1001 REVIEW	MCS/JAK
89	09/21/04	PER 1001 REVIEW	MCS/JAK
90	09/21/04	PER 1001 REVIEW	MCS/JAK
91	09/21/04	PER 1001 REVIEW	MCS/JAK
92	09/21/04	PER 1001 REVIEW	MCS/JAK
93	09/21/04	PER 1001 REVIEW	MCS/JAK
94	09/21/04	PER 1001 REVIEW	MCS/JAK
95	09/21/04	PER 1001 REVIEW	MCS/JAK
96	09/21/04	PER 1001 REVIEW	MCS/JAK
97	09/21/04	PER 1001 REVIEW	MCS/JAK
98	09/21/04	PER 1001 REVIEW	MCS/JAK
99	09/21/04	PER 1001 REVIEW	MCS/JAK
100	09/21/04	PER 1001 REVIEW	MCS/JAK