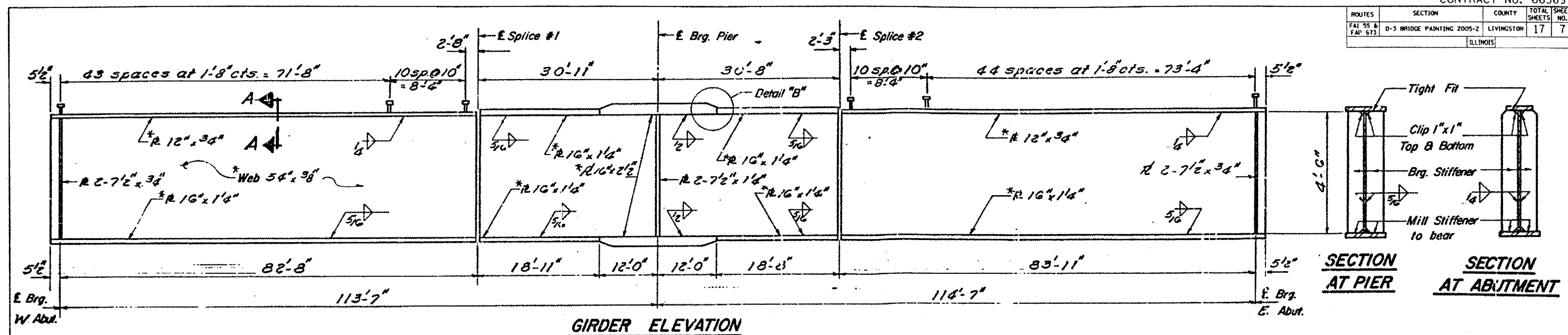
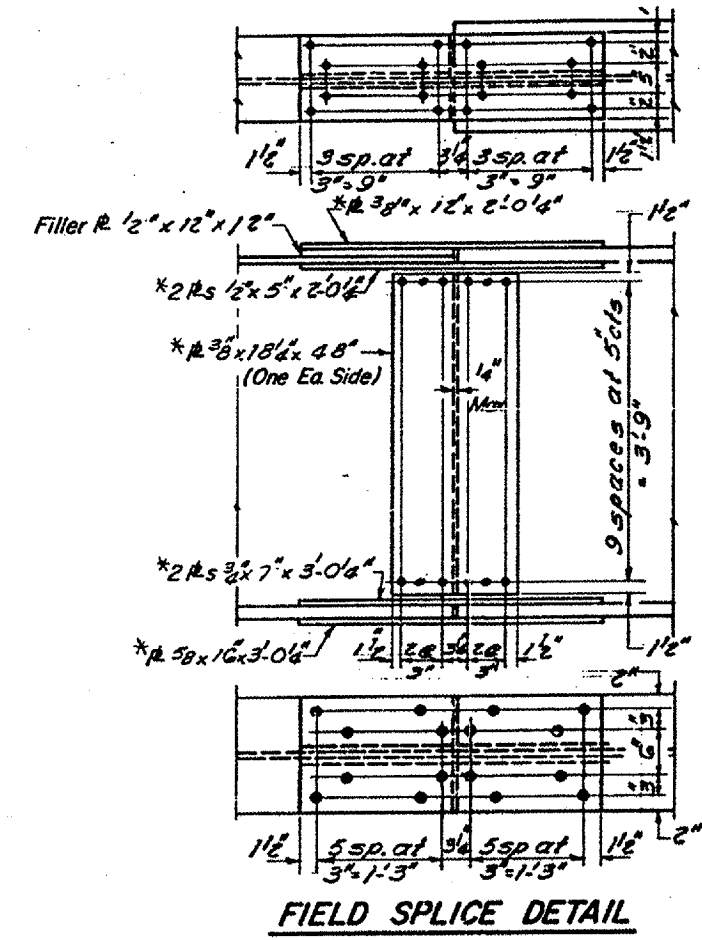


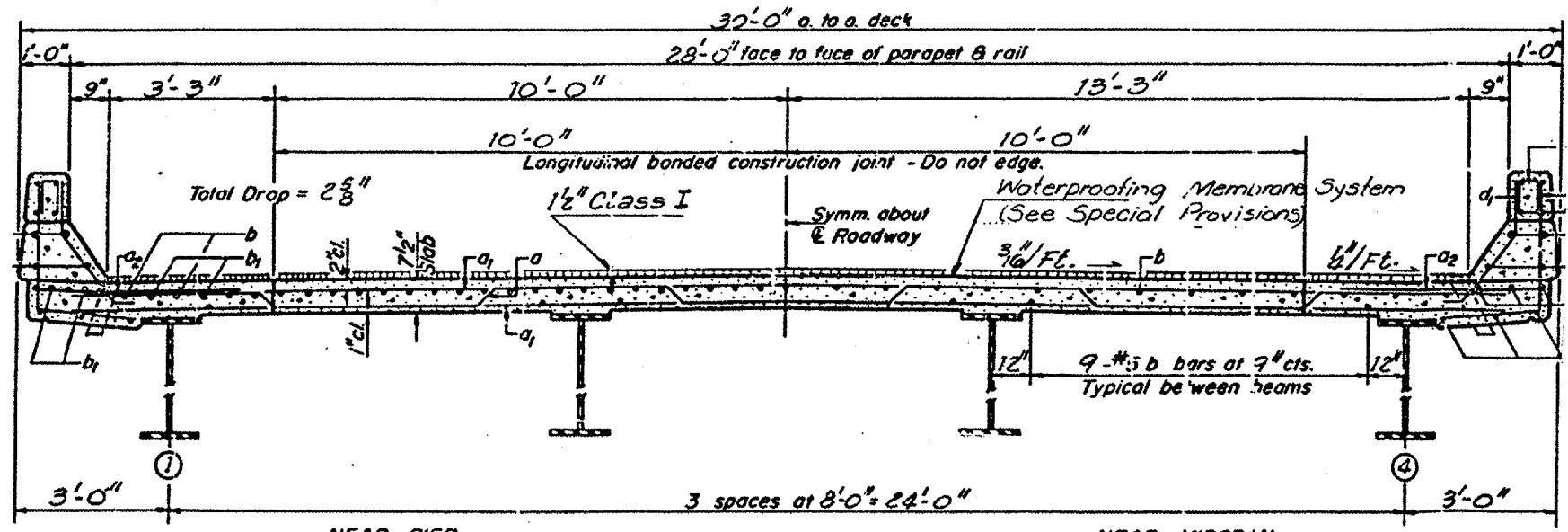
ROUTES	SECTION	COUNTY	TOTAL SHEETS	SHEET NO.
FAI 55 & FAP 673	D-3 BRIDGE PAINTING 2005-2	LIVINGSTON	17	7
ILLINOIS				



GIRDER ELEVATION



FIELD SPLICE DETAIL



CROSS SECTION

REVISIONS	
NAME	DATE

ILLINOIS DEPARTMENT OF TRANSPORTATION
EXISTING STRUCTURE
LOCATION #1
S.N. 053-0135

FOR INFORMATION ONLY

Date: 03/23/05
 c:/projects/bridgepaint05/bp2005-2/details.dgn