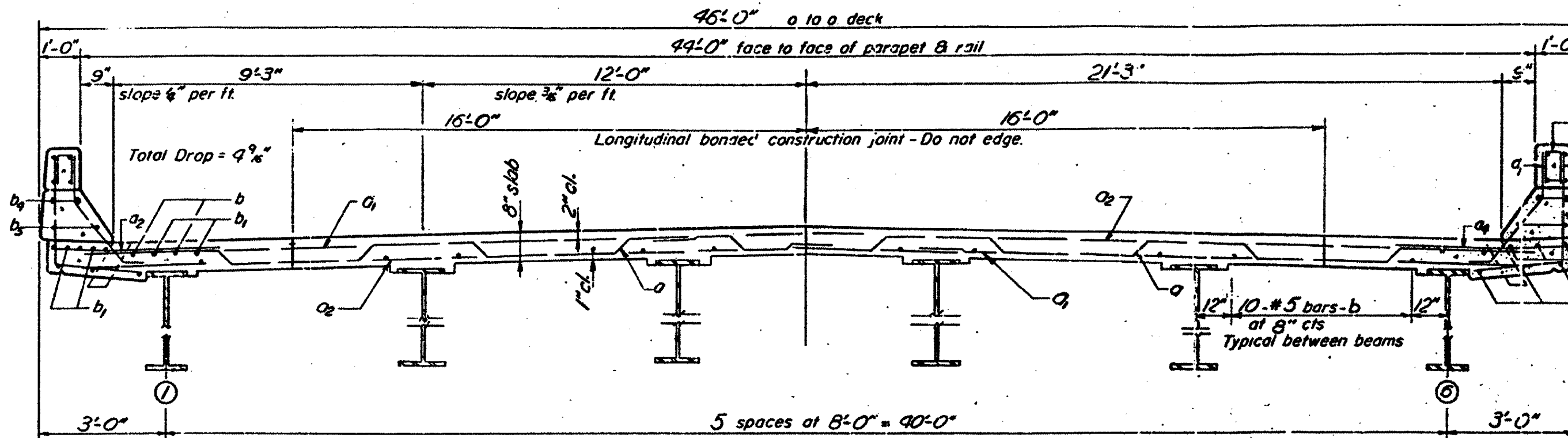


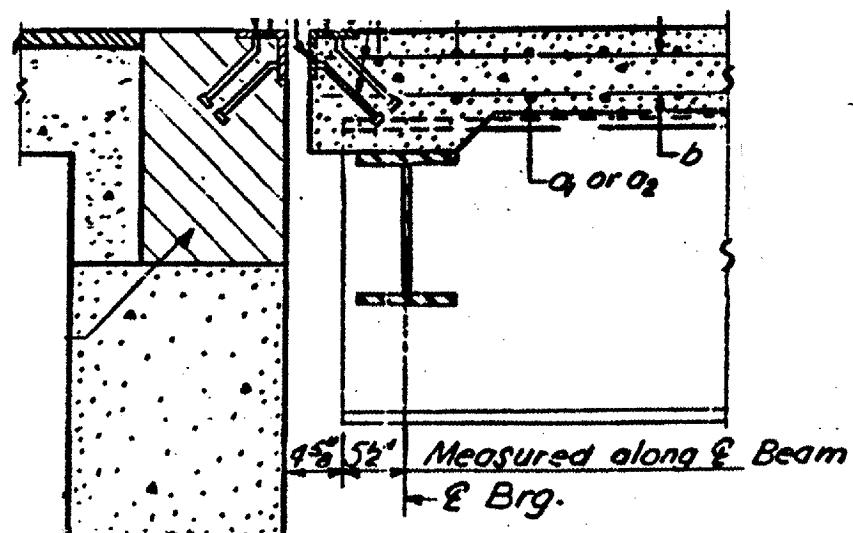
ROUTES	SECTION	COUNTY	TOTAL SHEETS	SHEET NO.
FAI 55 & FAP 673	D-3 BRIDGE PAINTING 2005-2	LIVINGSTON	17	15
ILLINOIS				



NEAR FIER

NEAR M. SPAN

**CROSS SECTION  
LOOKING EAST**



4 5/8" x 5 1/2" Measured along & Beam  
← & Brg.

REVISIONS	
NAME	DATE

ILLINOIS DEPARTMENT OF TRANSPORTATION  
**EXISTING STRUCTURE  
LOCATION #3  
S.N. 053-0065**

**FOR INFORMATION ONLY**