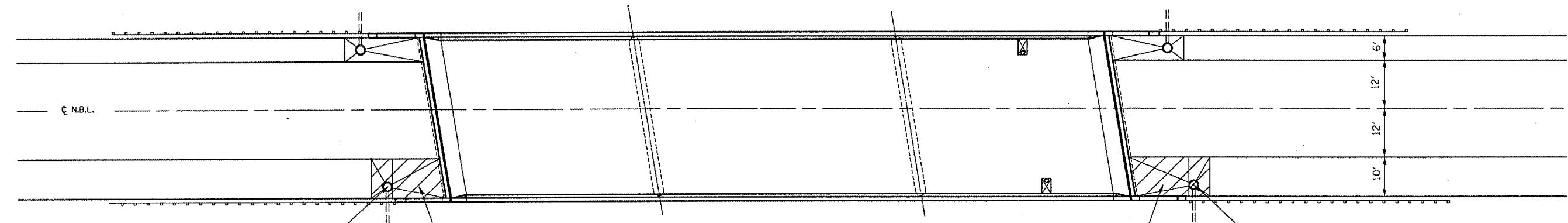
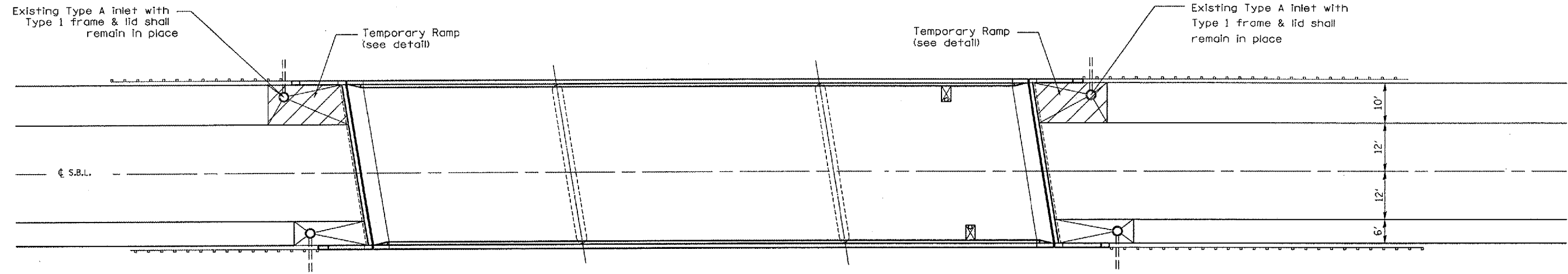
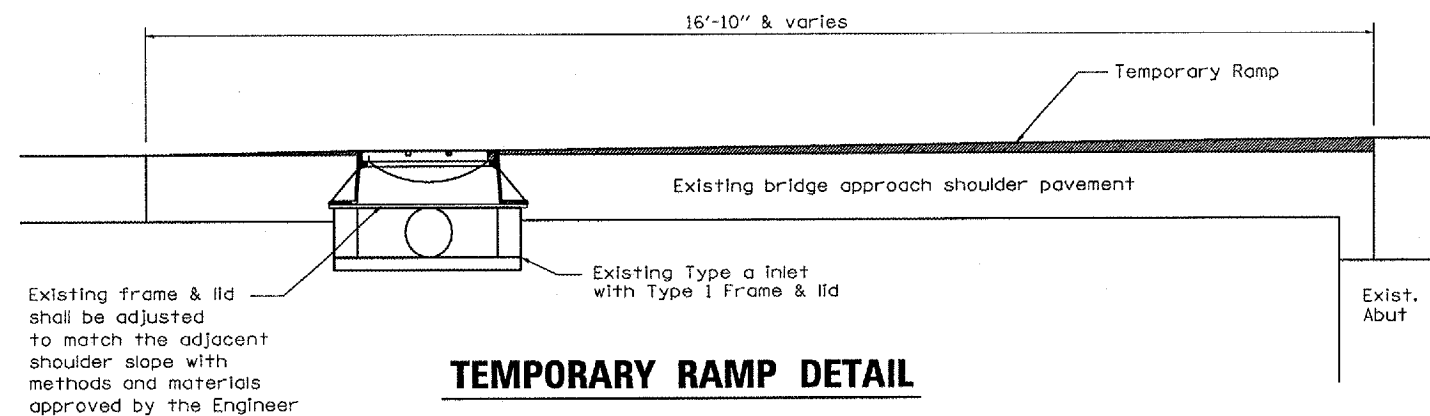


F.A.I. RTE.	SECTION	COUNTY	TOTAL SHEETS	SHEET NO.
412	(50-8VB)I	LASALLE	31	9
FED. ROAD DIST. NO. - ILLINOIS				



**PLAN**



**TEMPORARY RAMP DETAIL**

REVISIONS	
NAME	DATE

ILLINOIS DEPARTMENT OF TRANSPORTATION  
**PRE-STAGING CONSTRUCTION**  
 F.A.I. 412 OVER BNSF RAILROAD  
 SECTION (50-8VB)I  
 LASALLE COUNTY  
 STA. 758 + 10

DATE 06/01/2005

DRAWN BY RLW

JULY 1, 2005  
 C:/PROJETS/06/01/06/CM318/DETAILS.DGN