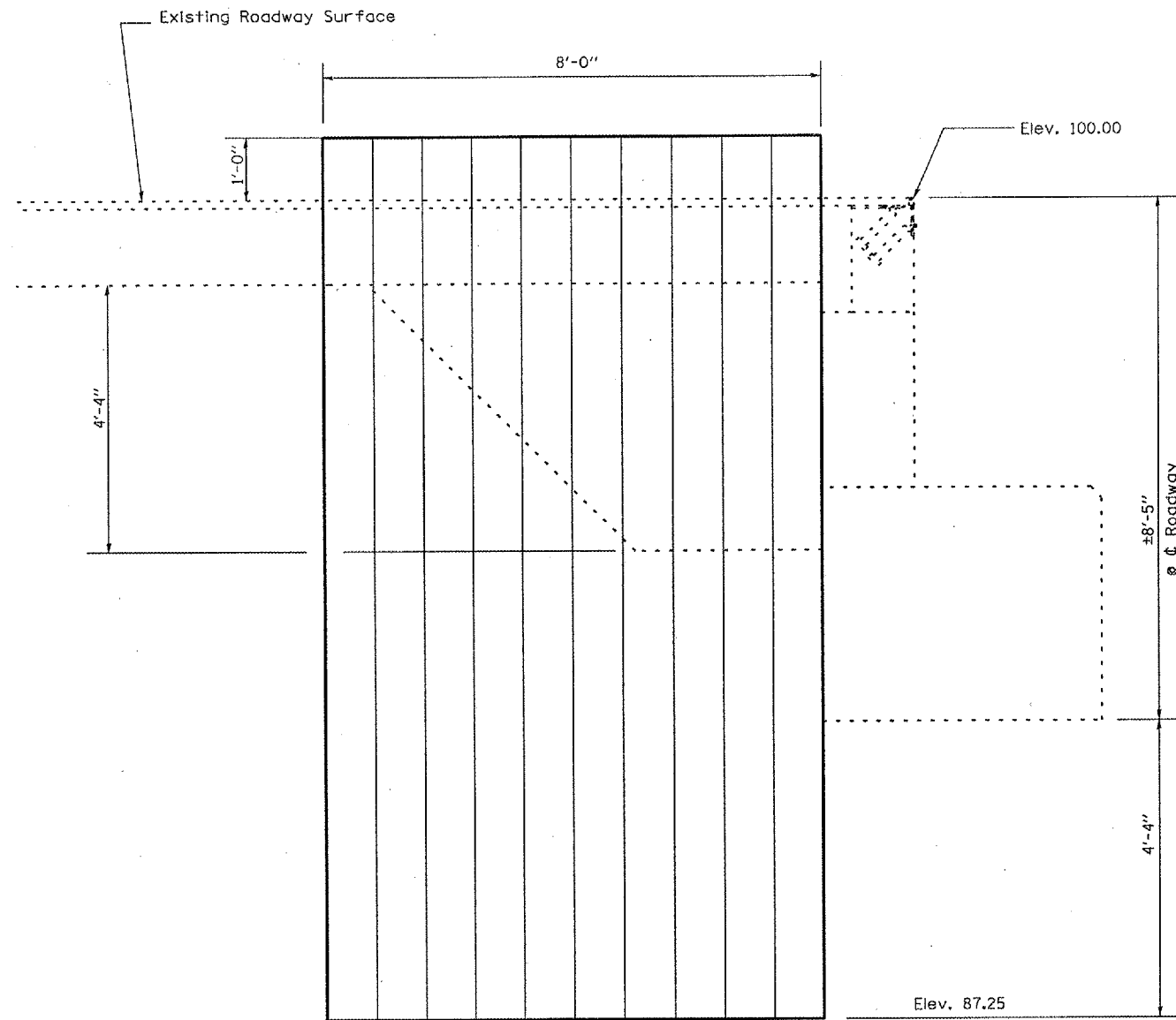
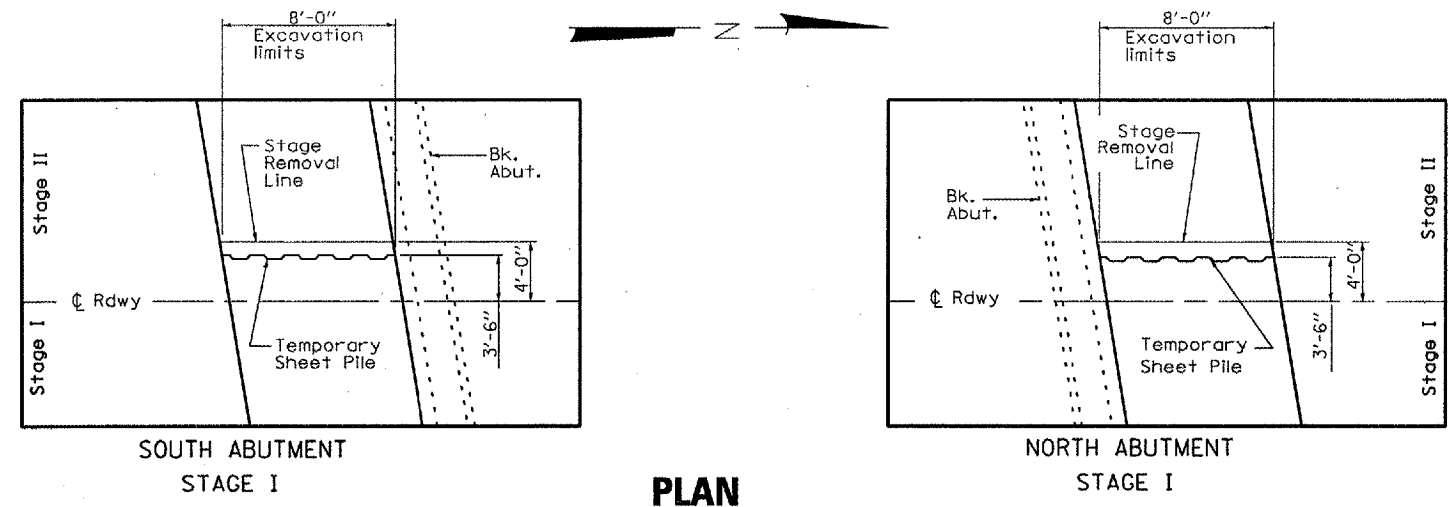


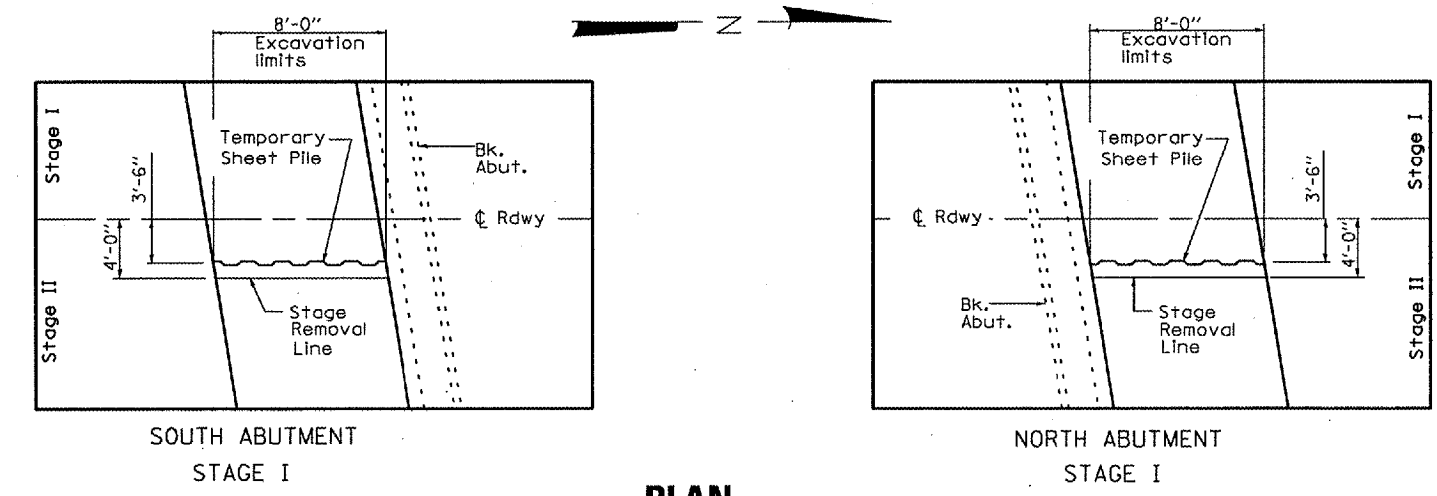
F.A.I. RTE.	SECTION	COUNTY	TOTAL SHEETS	SHEET NO.
412	(50-8VB)I	LASALLE	31	12
FED. ROAD DIST. NO.		ILLINOIS		



ELEVATION



**PLAN
S.N. 050-0163 (SB)**



**PLAN
S.N. 050-0164 (NB)**

BILL OF MATERIALS

Item	Unit	Total
Temporary Sheet Piling	Sq Ft	110

Pipe Drain table is shown for "ONE" Abutment only

REVISIONS	
NAME	DATE

ILLINOIS DEPARTMENT OF TRANSPORTATION
TEMPORARY SHEET PILE DETAILS
 F.A.I. 412 OVER BNSF RAILROAD
 SECTION (50-8VB)I
 LASALLE COUNTY
 STA. 758 + 10

DATE 06/01/2005 DRAWN BY RLW

JULY 1, 2005 C:\PROJECTS\DMA\ING6\CM318\DETAILS.DGN