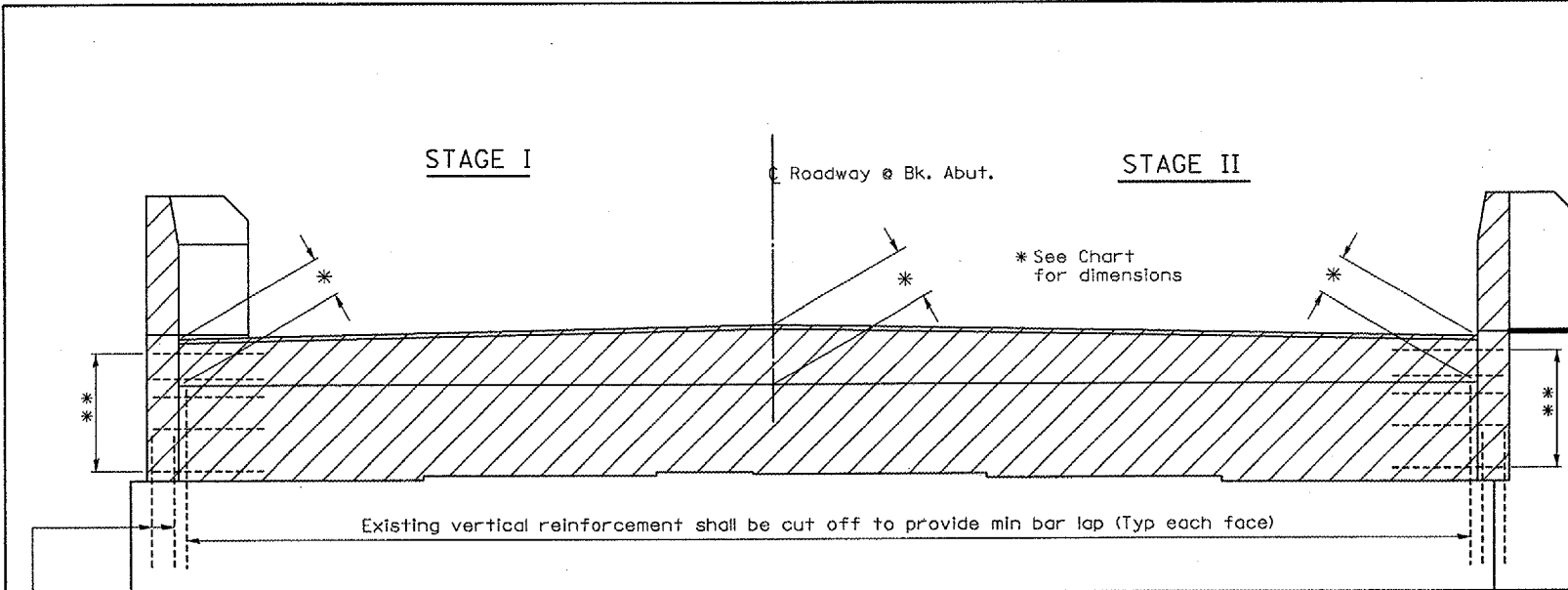


F.A.I. RTE.	SECTION	COUNTY	TOTAL SHEETS	SHEET NO.
412	(50-8VB)I	LASALLE	31	13
FED. ROAD DIST. NO. - ILLINOIS				



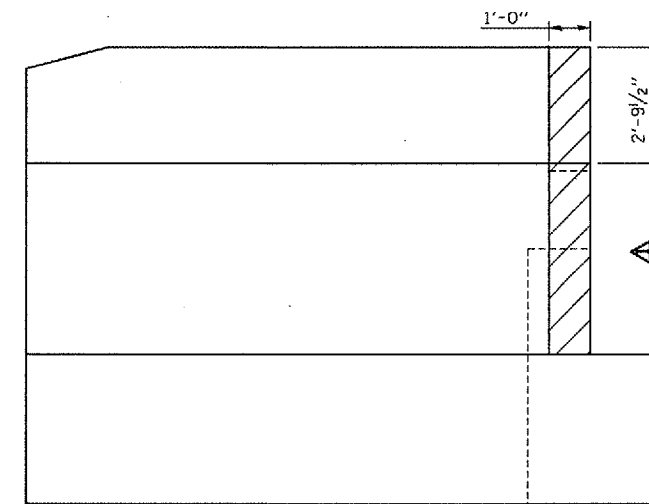
Existing reinforcement shall be cleaned, straightened and incorporated into the new concrete (typ each end)

** Existing reinforcement to be saved, cleaned and incorporated into the new concrete

ELEVATION TYPICAL

* SOUTHBOUND STRUCTURE			
	EAST END	CL	WEST END
S. ABUT.	1.54'	1.86'	1.46'
N. ABUT.	1.52'	1.84'	1.46'
NORTHBOUND STRUCTURE			
	EAST END	CL	WEST END
S. ABUT.	1.46'	1.85'	1.54'
N. ABUT.	1.46'	1.86'	1.56'

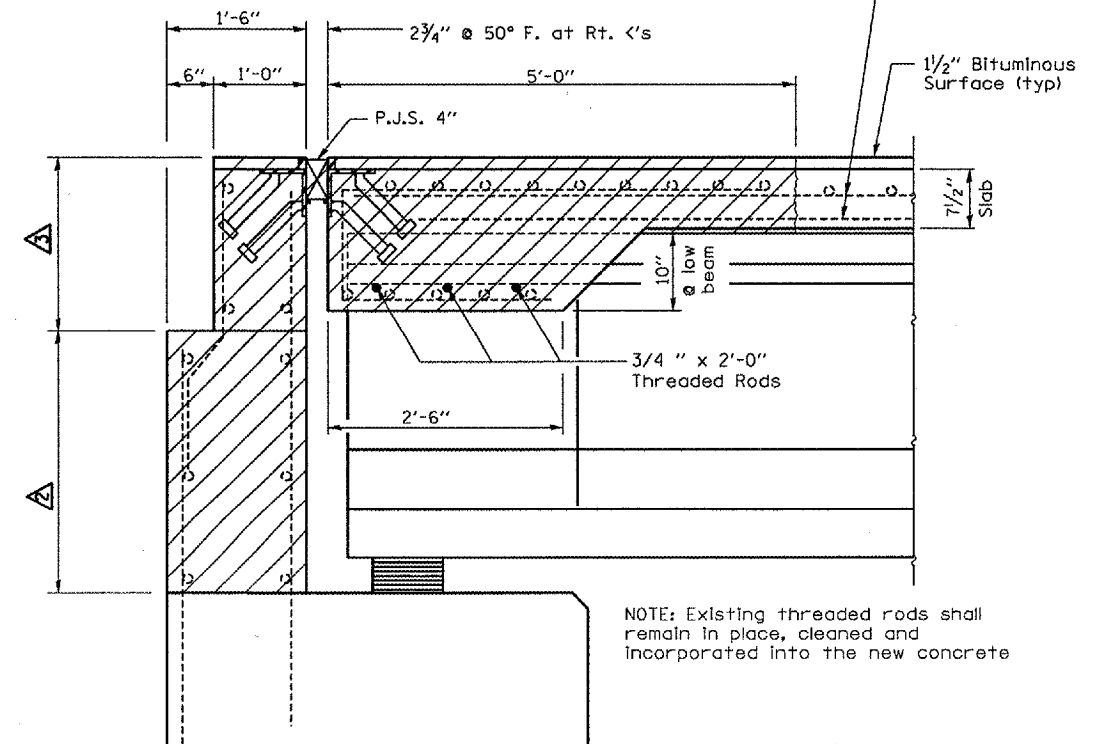
Distances are measured from top of bituminous surface



WING ELEVATION TYPICAL

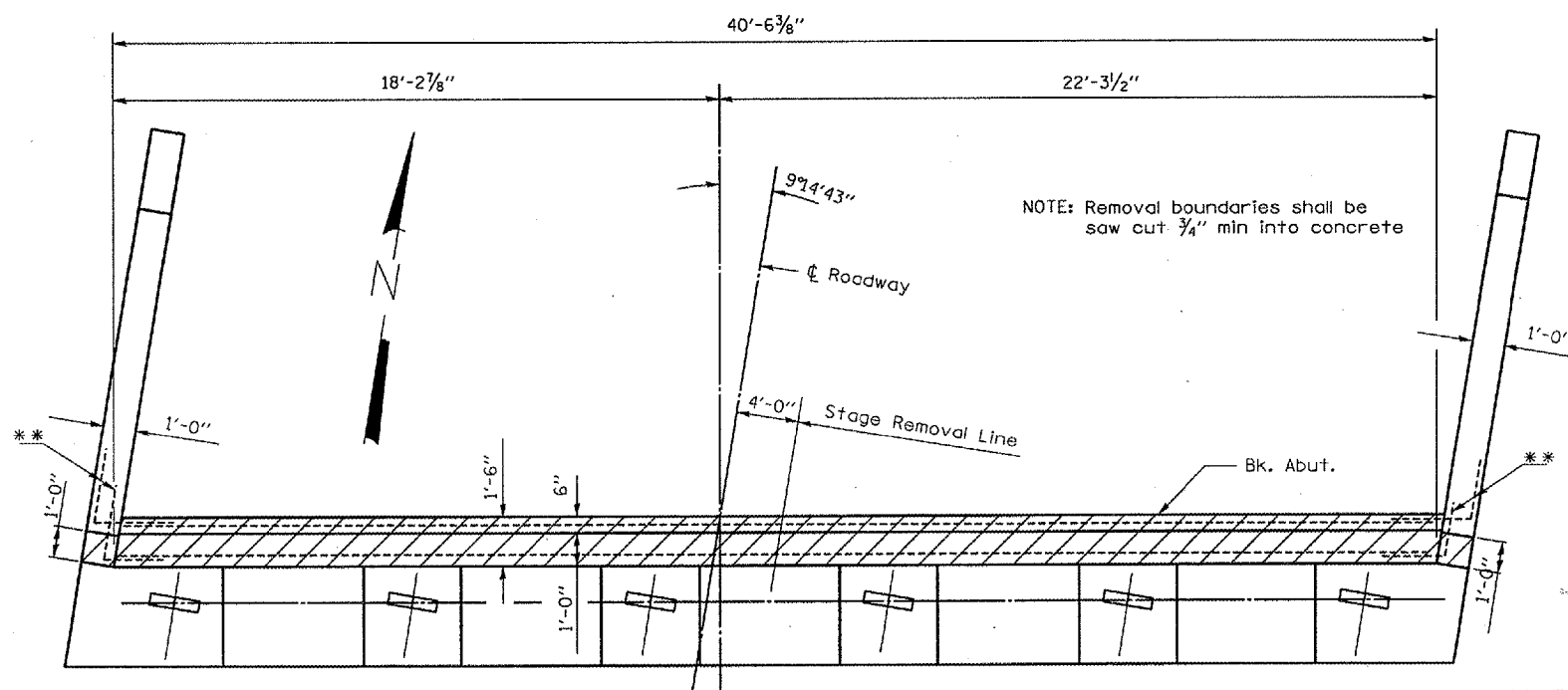
▲ SB STRUCTURE		
	EAST WING	WEST WING
S. ABUT.	4'-7 1/2"	4'-7 3/8"
N. ABUT.	4'-6 1/8"	4'-6 3/8"
▲ NB STRUCTURE		
	EAST WING	WEST WING
S. ABUT.	4'-7 1/2"	4'-7 3/8"
N. ABUT.	4'-6 1/4"	4'-6 3/8"

Existing reinforcement to be cut off to provide min bar lap



NOTE: Existing threaded rods shall remain in place, cleaned and incorporated into the new concrete

ABUTMENT SECTION TYPICAL



PLAN TYPICAL

NORTHBOUND LANE-NORTH ABUTMENT SHOWN

LOCATION	VARIES	VARIES
S.A. S.B. LANE	2'-9 7/8" TO 3'-1 7/8"	1'-4" TO 1'-8 3/4"
S.A. N.B. LANE	2'-9 7/8" TO 3'-1 7/8"	1'-4" TO 1'-8 7/8"
N.A. N.B. LANE	2'-8 3/4" TO 3'-0 3/4"	1'-4" TO 1'-8 3/4"
N.A. S.B. LANE	2'-9" TO 3'-0 7/8"	1'-4" TO 1'-8 1/2"

REVISIONS	
NAME	DATE

ILLINOIS DEPARTMENT OF TRANSPORTATION
REMOVAL DETAILS - ABUTMENTS
 F.A.I. 412 OVER BNSF RAILROAD
 SECTION (50-8VB)I
 LASALLE COUNTY
 STA. 758 + 10

DATE 06/01/2005

DRAWN BY RLW