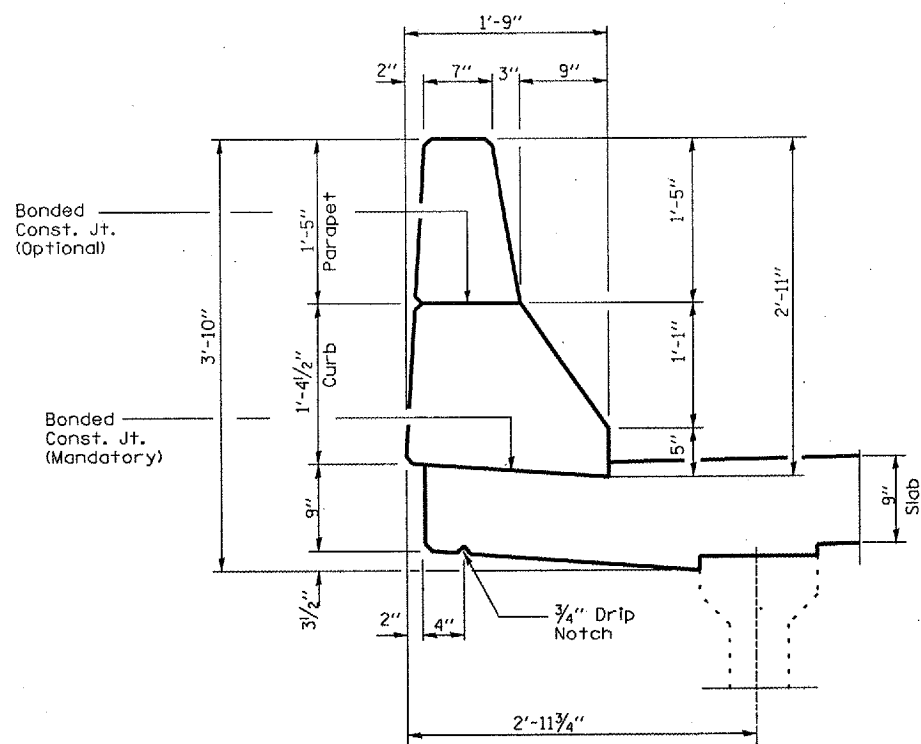
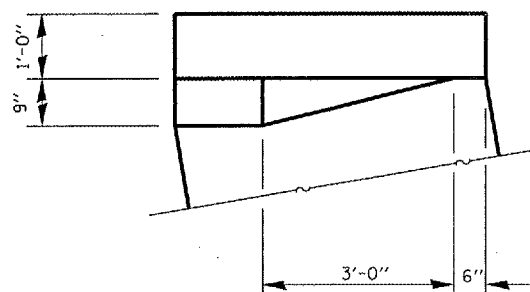


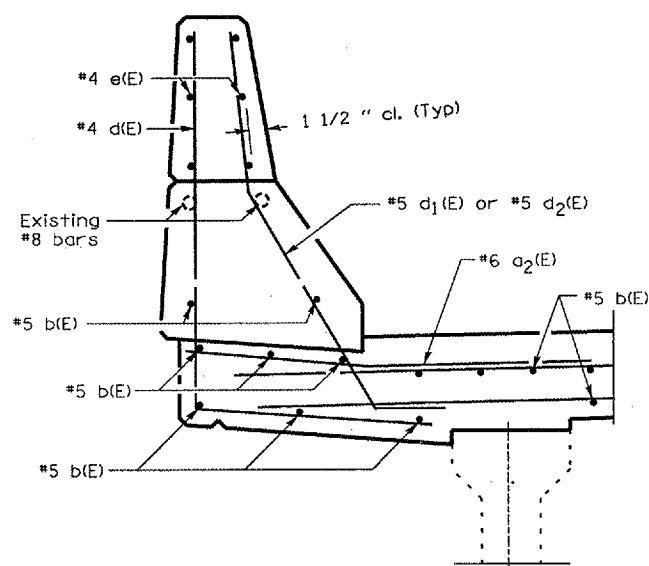
F.A.I. RTE.	SECTION	COUNTY	TOTAL SHEETS	SHEET NO.
412	(50-8VB)I	LASALLE	31	16
FED. ROAD DIST. NO. ILLINOIS				



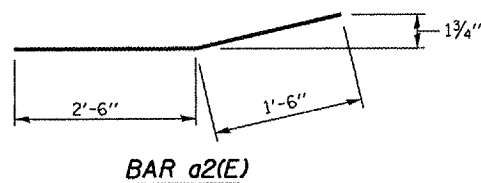
PARAPET SECTION
DIMENSIONS



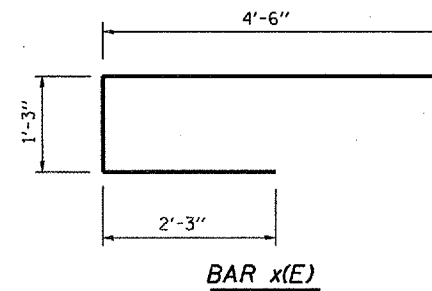
CORNER DETAIL



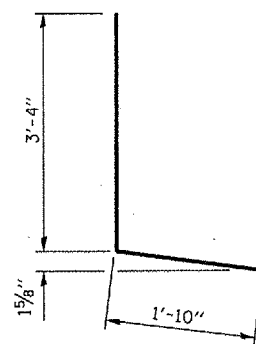
PARAPET SECTION
REINFORCEMENT



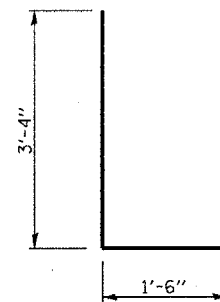
BAR a2(E)



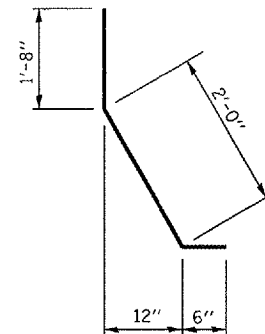
BAR x(E)



BAR d(E)



BAR d2(E)



BAR d1(E)

SUPERSTRUCTURE
REINFORCEMENT TABLE

BAR	NO.	SIZE	LENGTH	SHAPE
a(E)	12	#7	20'-0"	—
a1(E)	16	#6	20'-0"	—
a2(E)	8	#6	4'-0"	—
a3(E)	20	#6	6'-5"	—
a4(E)	10	#6	3'-1"	—
b(E)	96	#5	4'-9"	—
d(E)	10	#4	5'-2"	—
d1(E)	2	#5	4'-2"	—
d2(E)	8	#5	4'-10"	—
e(E)	12	#4	4'-9"	—
x(E)	64	#6	8'-0"	—
Reinforcement Bars			Pounds	2625
Epoxy Coated				

Reinforcement table is shown for "ONE" Abutment only

REVISIONS	
NAME	DATE

ILLINOIS DEPARTMENT OF TRANSPORTATION
CONSTRUCTION DETAILS - DECK
F.A.I. 412 OVER BNSF RAILROAD
SECTION (50-8VB)I
LASALLE COUNTY
STA. 758 + 10

DATE 06/01/2005

DRAWN BY RLW

JULY 1, 2005
C:\PROJECTS\CHAI\106\CM318\DETAILS.DGN