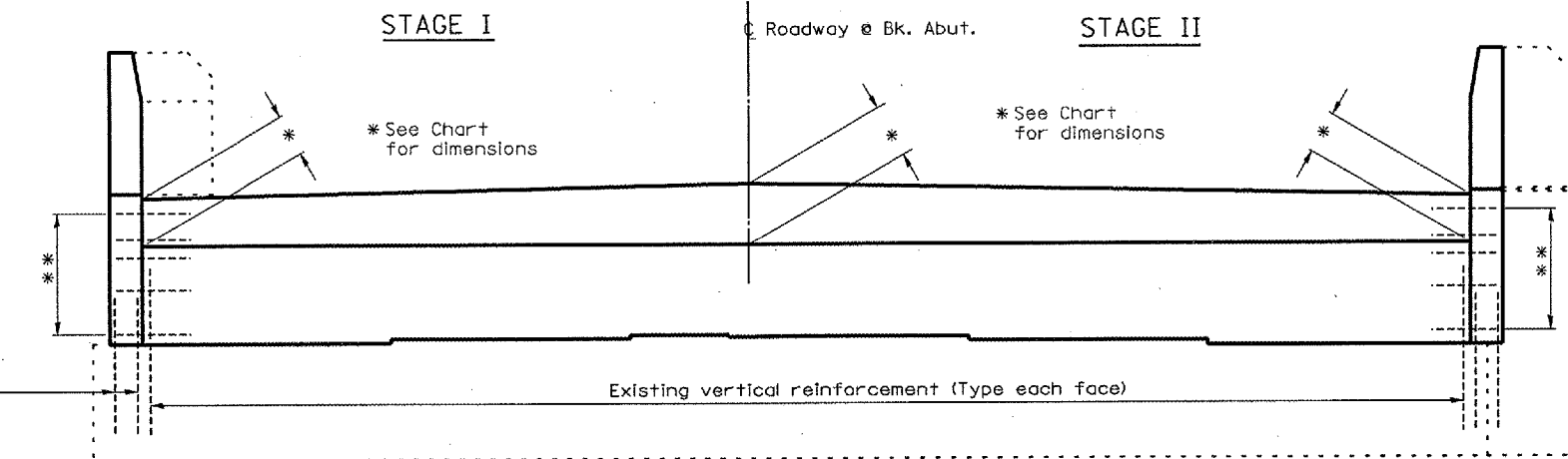


F.A.I. RTE.	SECTION	COUNTY	TOTAL SHEETS	SHEET NO.
412	(50-8VB)1	LASALLE	31	17
FED. ROAD DIST. NO. ILLINOIS				

\*\* Existing reinforcement to be saved, cleaned and incorporated into the new concrete

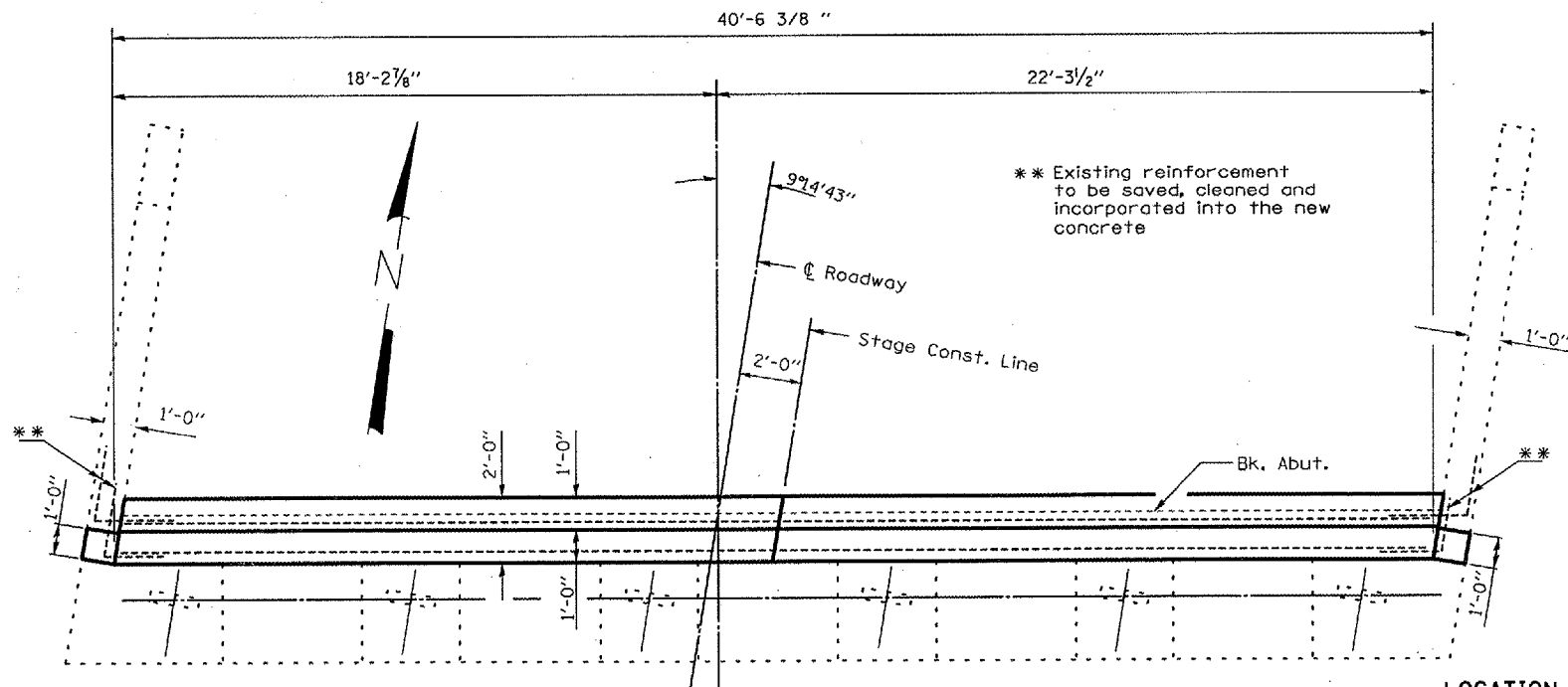
\*\* Existing reinforcement to be saved, cleaned and incorporated into the new concrete



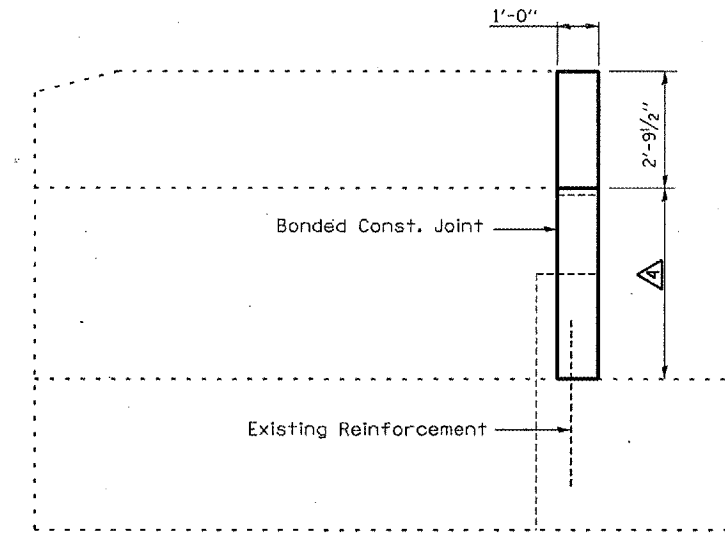
**ELEVATION  
TYPICAL**

* SOUTHBOUND STRUCTURE			
	EAST END	CL	WEST END
S. ABUT.	1.54'	1.86'	1.46'
N. ABUT.	1.52'	1.84'	1.46'
* NORTHBOUND STRUCTURE			
	EAST END	CL	WEST END
S. ABUT.	1.46'	1.85'	1.54'
N. ABUT.	1.46'	1.86'	1.56'

\*\* Existing reinforcement to be saved, cleaned and incorporated into the new concrete



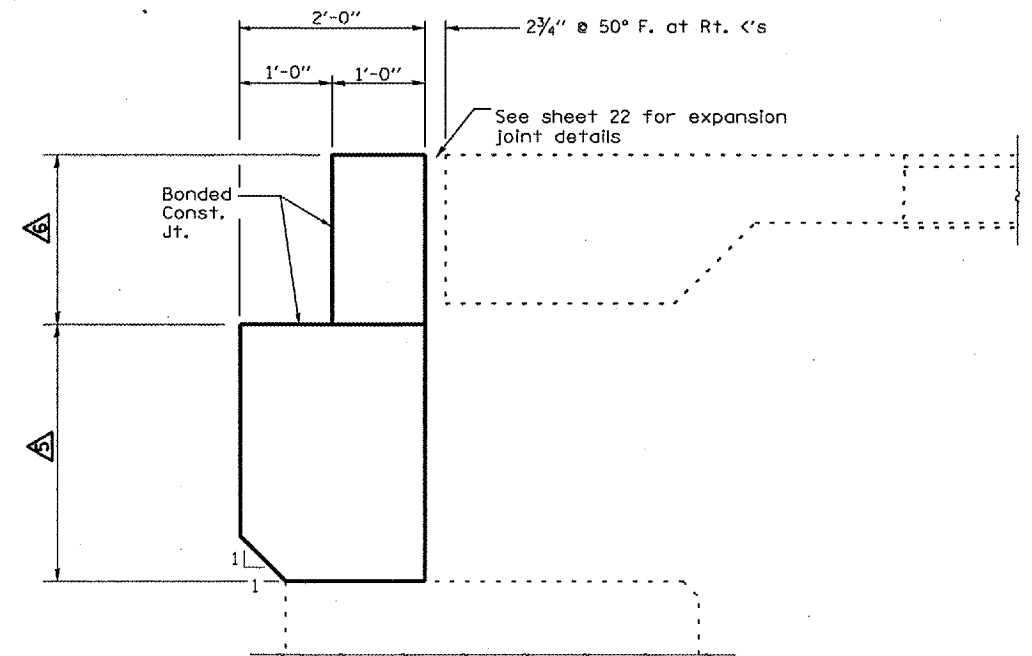
**PLAN  
TYPICAL**  
NORTHBOUND LANE-NORTH ABUTMENT SHOWN



**WING ELEVATION  
TYPICAL**

4 SB STRUCTURE	
EAST WING	WEST WING
S. ABUT. 4'-7 1/2"	4'-7 3/8"
N. ABUT. 4'-6 1/8"	4'-6 3/8"

4 NB STRUCTURE	
EAST WING	WEST WING
S. ABUT. 4'-7 1/2"	4'-7 3/8"
N. ABUT. 4'-6 1/4"	4'-6 3/8"



**ABUTMENT SECTION  
TYPICAL**

LOCATION	VARIES	VARIES
S.A. S.B. LANE	2'-11 3/8" TO 3'-3 3/8"	1'-5 1/2" TO 1'-10 1/4"
S.A. N.B. LANE	2'-11 3/8" TO 3'-3 3/8"	1'-5 1/2" TO 1'-10 3/8"
N.A. N.B. LANE	2'-10 1/4" TO 3'-2 1/4"	1'-5 1/2" TO 1'-10 1/4"
N.A. S.B. LANE	2'-10 1/2" TO 3'-2 3/8"	1'-5 1/2" TO 1'-10"

REVISIONS	
NAME	DATE

ILLINOIS DEPARTMENT OF TRANSPORTATION  
**CONSTRUCTION DETAILS - ABUTMENTS  
 SHOWING DIMENSION**  
 F.A.I. 412 OVER BNSF RAILROAD  
 SECTION (50-8VB)1  
 LASALLE COUNTY  
 STA. 758 + 10

JULY 1, 2005 C:\PROJECTS\DMA\106\CM318\DETAILS.DGN