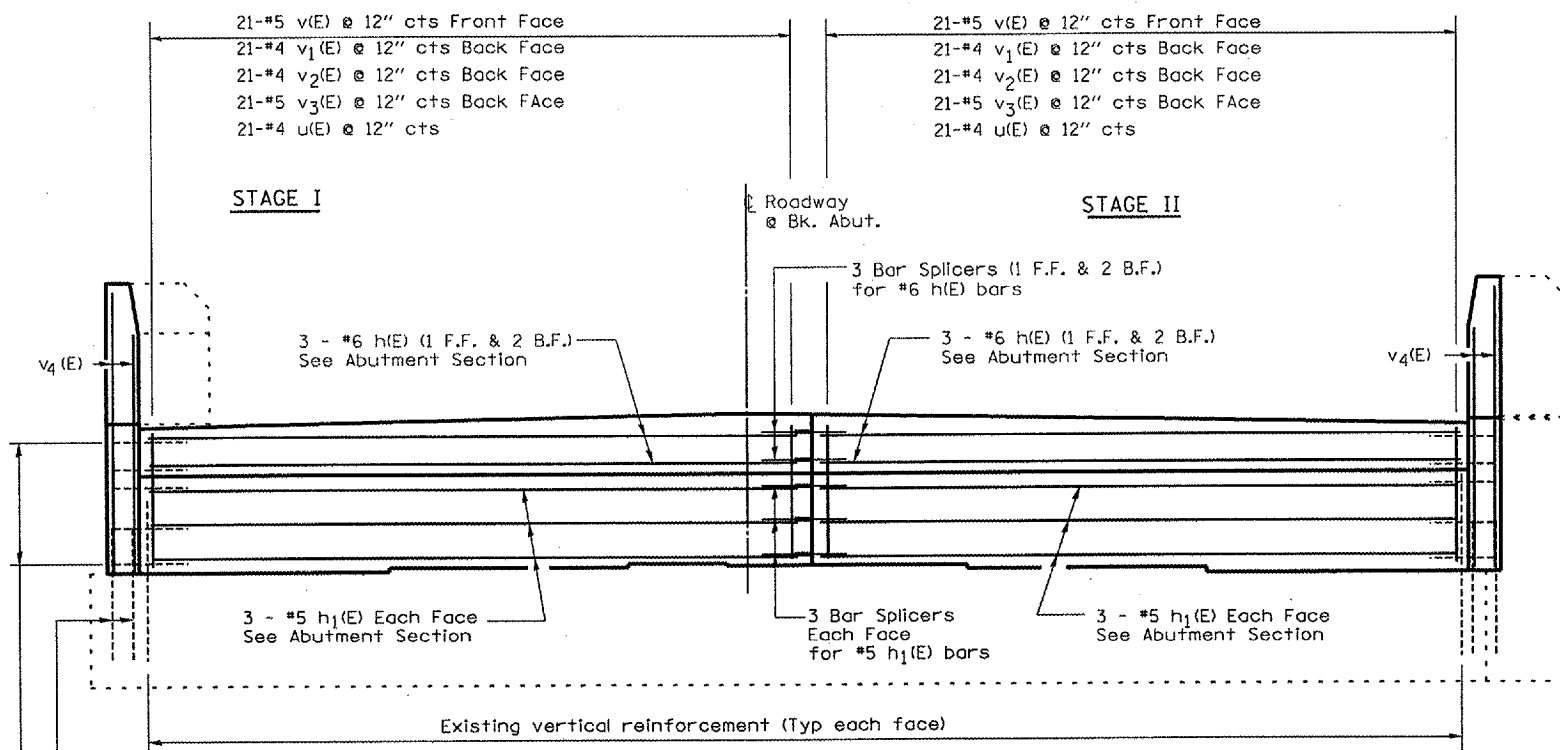


F.A.I. RTE.	SECTION	COUNTY	TOTAL SHEETS	SHEET NO.
412	(50-8VB)I	LASALLE	31	18
FED. ROAD DIST. NO.		ILLINOIS		

ABUTMENT REINFORCEMENT TABLE

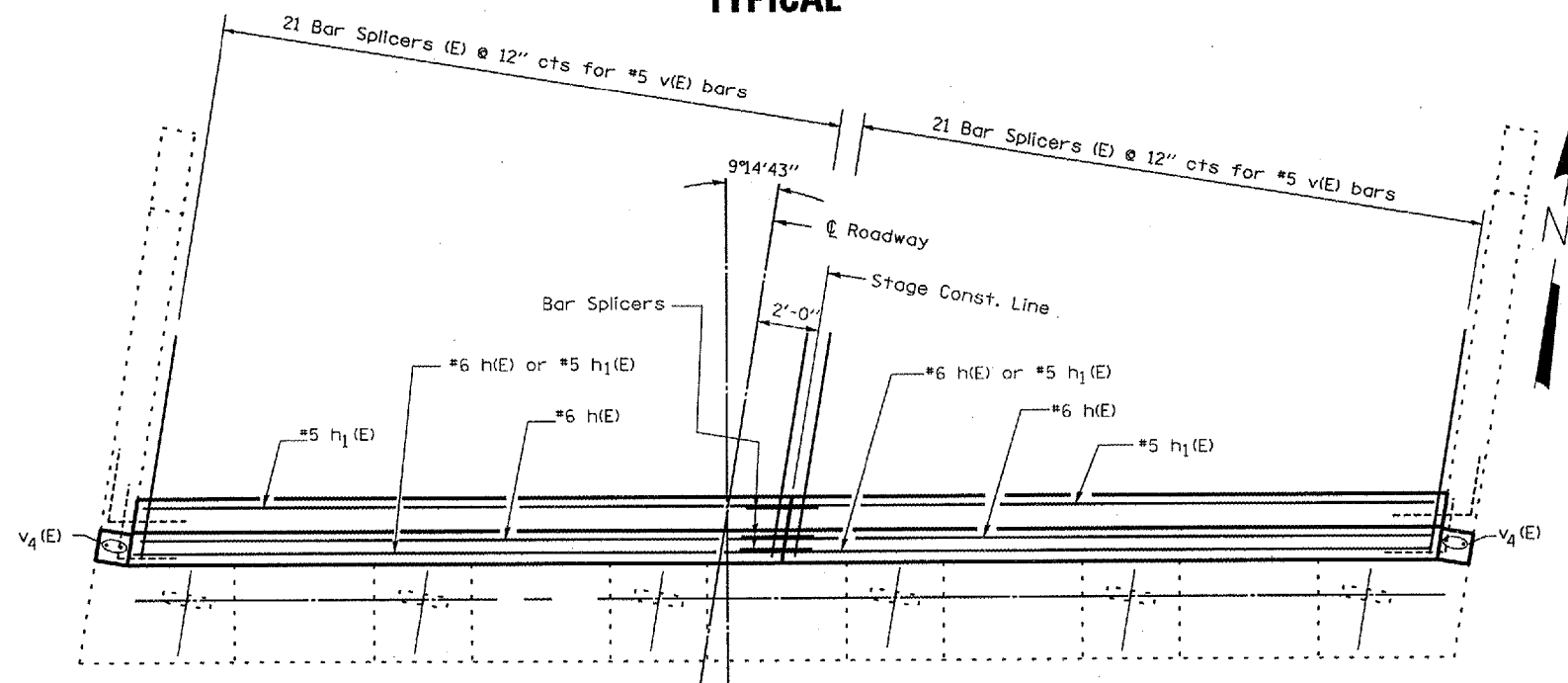
BAR	NO.	SIZE	LENGTH	SHAPE
h(E)	6	#6	20'-0"	—
h1(E)	12	#5	20'-0"	—
u(E)	42	#4	5'-11"	⌊
v(E)	42	#5	3'-9"	—
v1(E)	42	#4	4'-1"	—
v2(E)	42	#4	3'-8"	—
v3(E)	42	#5	3'-2"	—
v4(E)	4	#6	7'-0"	—
REINFORCEMENT BARS			Pounds	1068
EPOXY COATED				

Reinforcement table is shown for "ONE" Abutment only



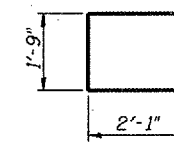
ELEVATION TYPICAL

NOTE: Existing concrete adjacent to new concrete shall be a Bonded Construction Joint

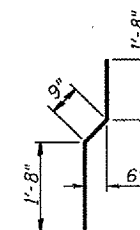


PLAN TYPICAL

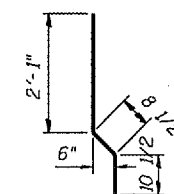
NORTHBOUND LANE-NORTH ABUTMENT SHOWN



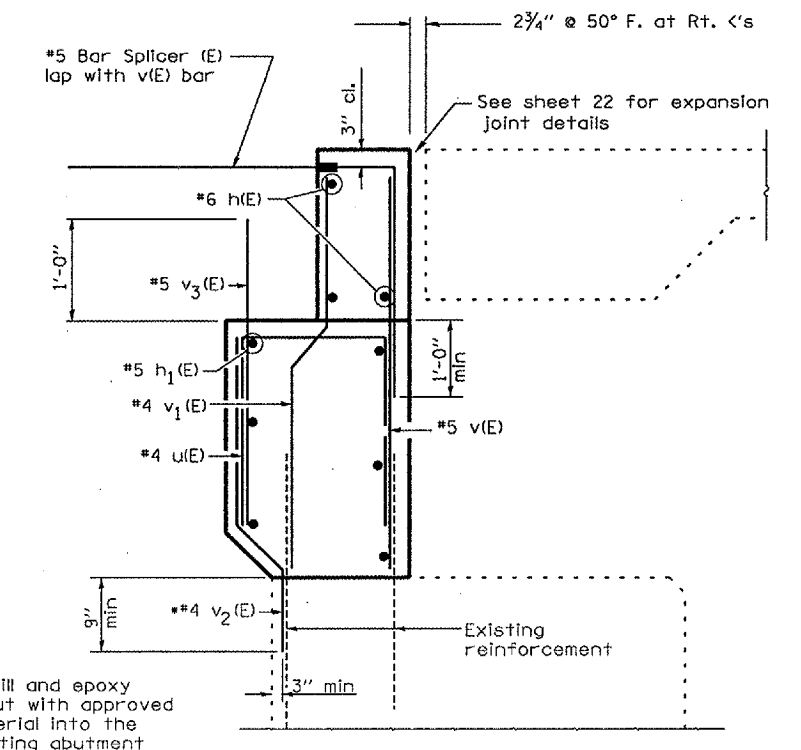
BAR u(E)



BAR v1(E)



BAR v2(E)



ABUTMENT SECTION TYPICAL SHOWING REINFORCEMENT

REVISIONS	
NAME	DATE

ILLINOIS DEPARTMENT OF TRANSPORTATION
CONSTRUCTION DETAILS - ABUTMENTS SHOWING REINFORCEMENT
 F.A.I. 412 OVER BNSF RAILROAD
 SECTION (50-8VB)I
 LASALLE COUNTY
 STA. 758+10

DATE 06/01/2005

DRAWN BY RLW