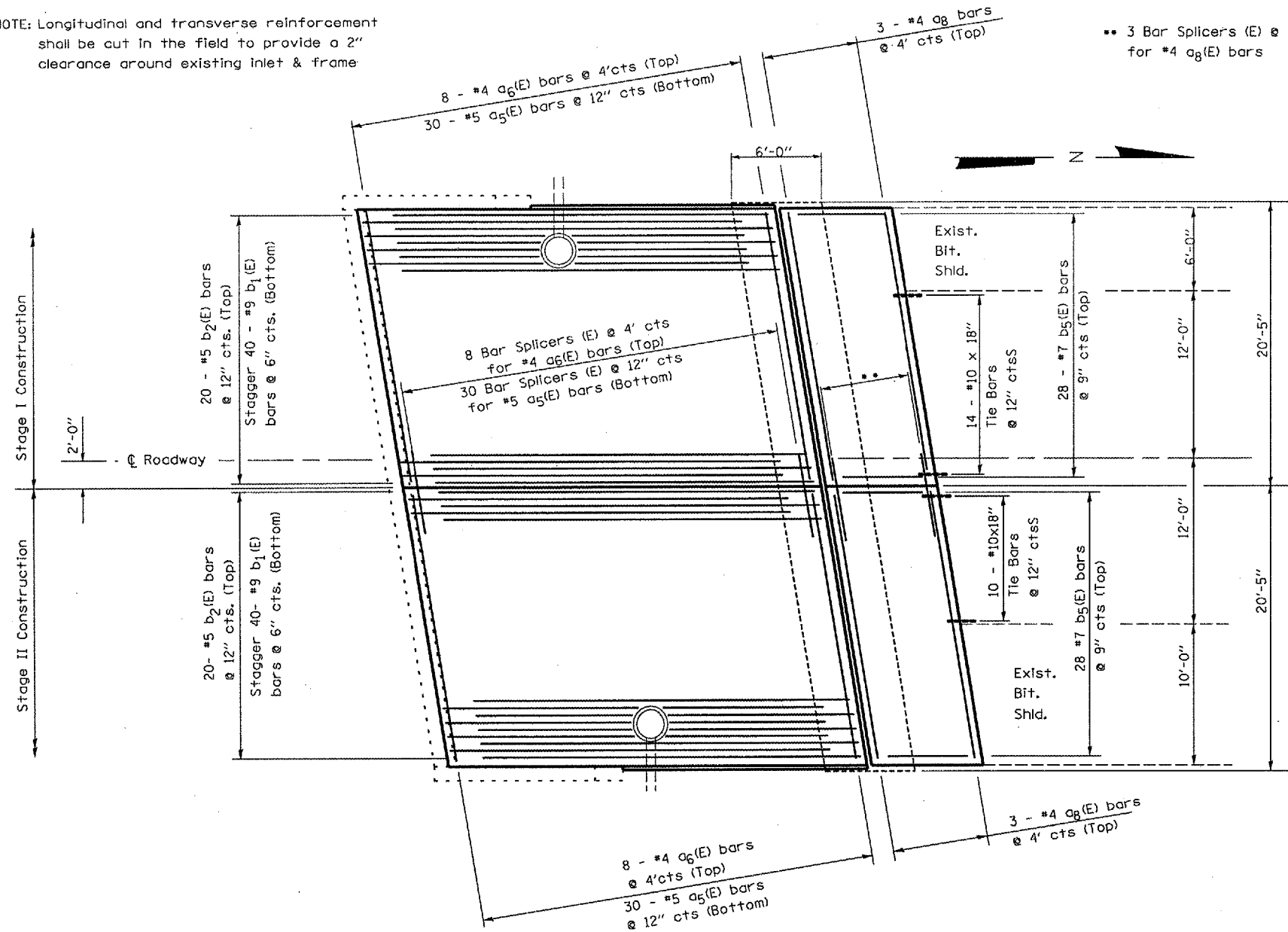


F.A.I. RTE.	SECTION	COUNTY	TOTAL SHEETS	SHEET NO.
412	(50-8VB)I	LASALLE	31	19
FED. ROAD DIST. NO. ILLINOIS				

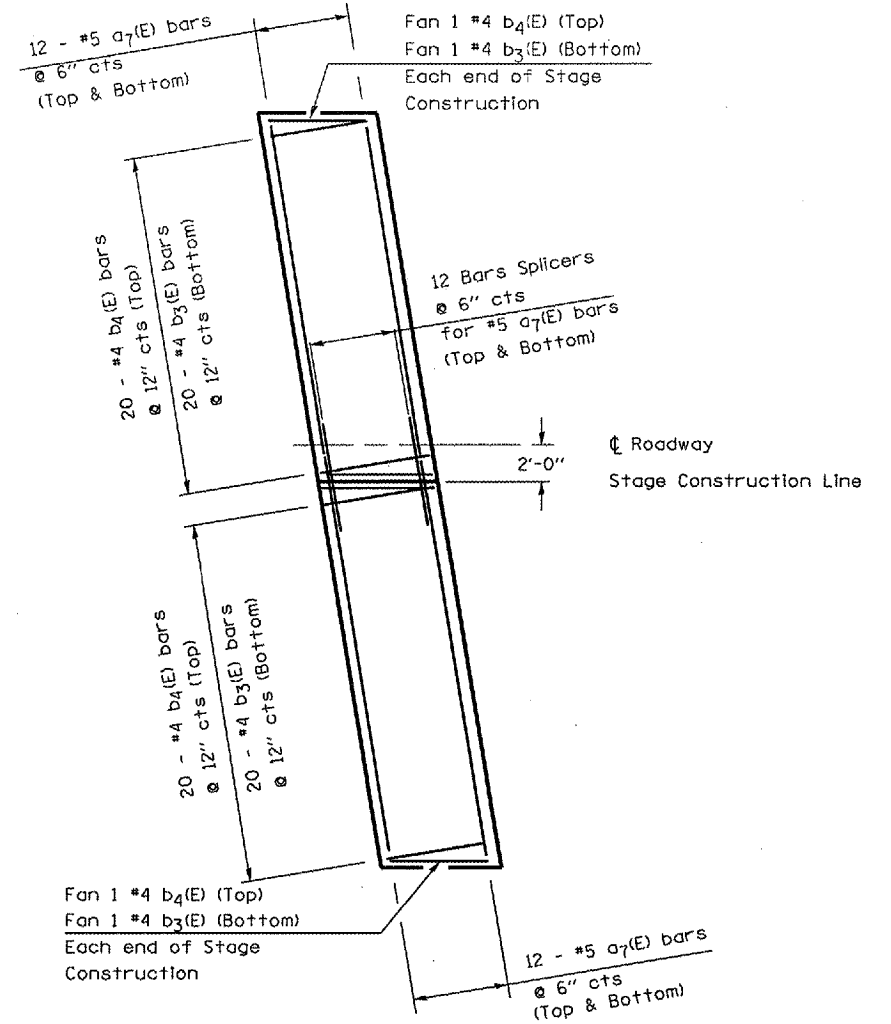
NOTE: Longitudinal and transverse reinforcement shall be cut in the field to provide a 2" clearance around existing inlet & frame



PLAN

BRIDGE APPROACH PAVEMENT

NORTHBOUND LANE-NORTH APPROACH SHOWN



PLAN

CONCRETE PAD

BRIDGE APPROACH PAVEMENT REINFORCEMENT TABLE

BAR	NO.	SIZE	LENGTH	SHAPE
a5(E)	60	#5	20'-0"	—
a6(E)	16	#4	20'-0"	—
b1(E)	80	#9	29'-6"	⌋
b2(E)	40	#5	29'-6"	—
REINFORCEMENT BARS, EPOXY COATED			Pounds	10720

CONCRETE PAD REINFORCEMENT TABLE

BAR	NO.	SIZE	LENGTH	SHAPE
a7(E)	48	#5	20'-4"	—
b3(E)	44	#4	6'-8"	⌋
b4(E)	44	#4	5'-8"	—
REINFORCEMENT BARS EPOXY COATED			Pounds	1380

BRIDGE APPROACH PAVEMENT CONNECTOR (PCC) REINFORCEMENT TABLE

BAR	NO.	SIZE	LENGTH	SHAPE
a8	6	#4	20'-0"	—
b5	56	#7	7'-8"	—
REINFORCEMENT BARS EPOXY COATED			Pounds	958
TIE BARS			Each	24

NOTE: Reinforcement tables as shown are for "INFORMATION ONLY" the cost of the reinforcement bars and tie bars shall not be paid for separately but shall be included with the Pay Item for "Bridge Approach Pavement" and "Bridge Approach Pavement Connector (PCC) as outlined in Article 420.03 of the Standard Specifications

Reinforcement quantities reflects "ONE" Approach Slab only

REVISIONS	
NAME	DATE

ILLINOIS DEPARTMENT OF TRANSPORTATION
BRIDGE APPROACH PAVEMENT DETAILS
 F.A.I. 412 OVER BNSF RAILROAD
 SECTION (50-8VB)I
 LASALLE COUNTY
 STA. 758+10

DATE 06/01/2005

DRAWN BY RLW

NOTE: Reinforcement bars or Bar Splicers designated (E) shall be Epoxy Coated