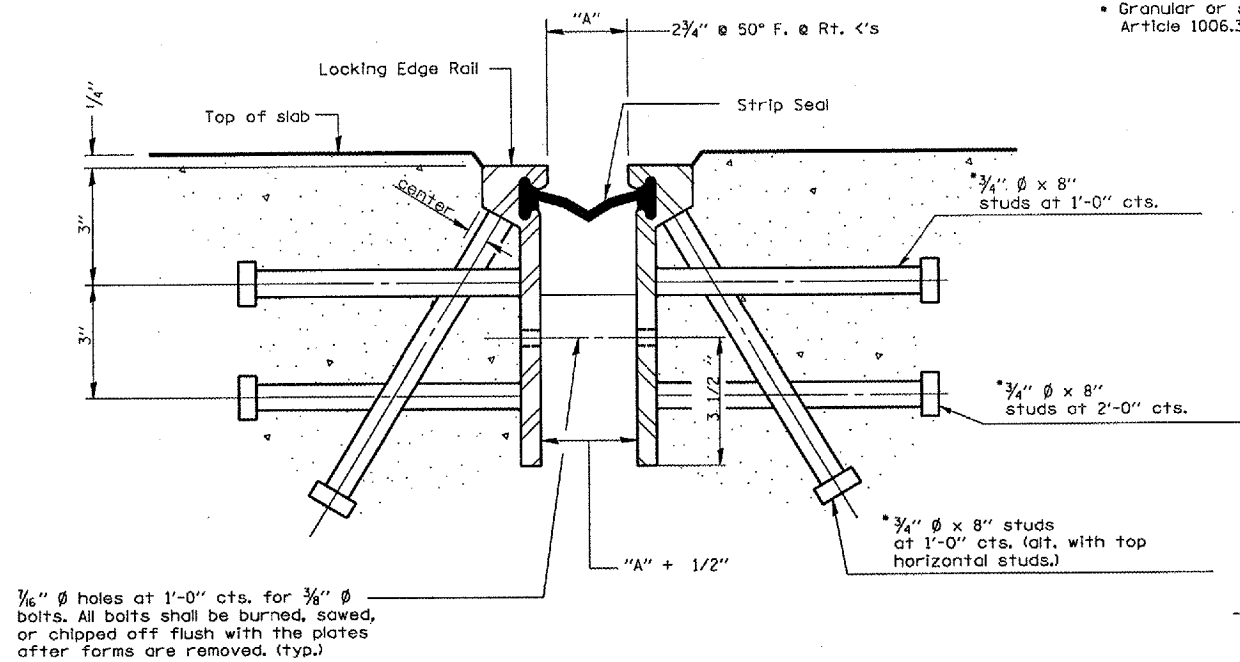


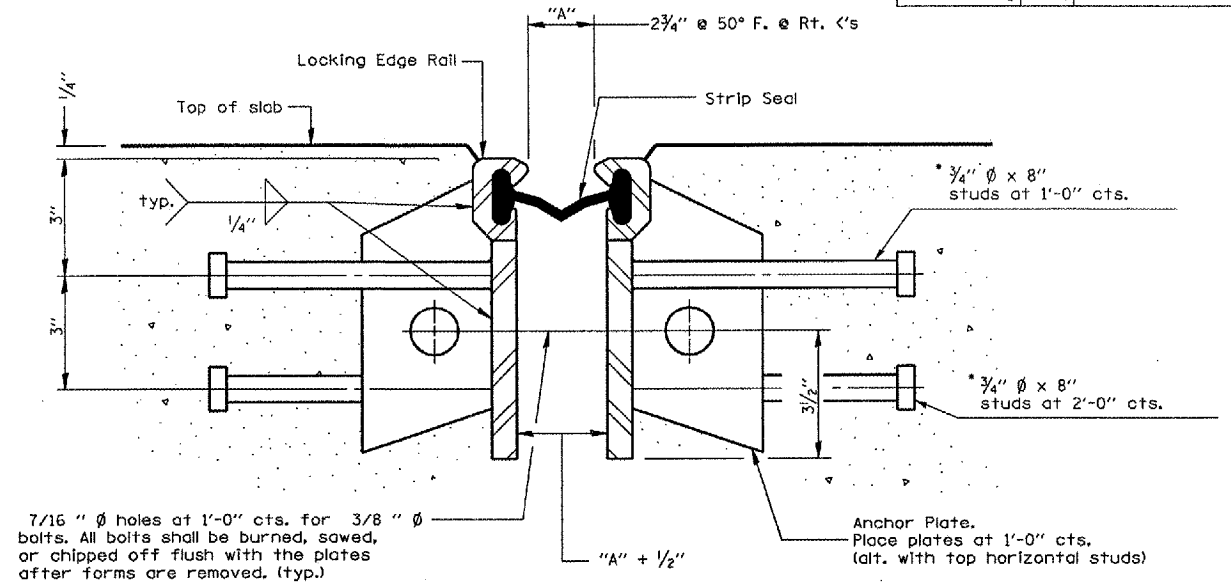
F.A.I. RTE.	SECTION	COUNTY	TOTAL SHEETS	SHEET NO.
412	(50-8VB)I	LASALLE	31	22
FED. ROAD DIST. NO. _____		ILLINOIS		

* Granular or solid flux filled headed studs conforming to Article 1006.32 of the Std. Specs., automatically end welded.



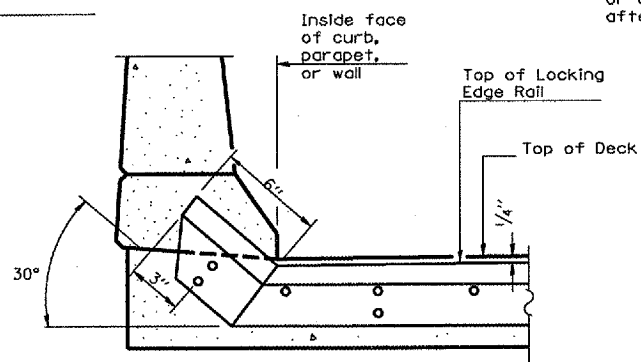
SECTION THRU ROLLED RAIL EXP. JOINT

(856 Studs Required)



SECTION THRU WELDED RAIL EXP. JOINT

(512 Studs Required)
(344 Anchor Plates Required)



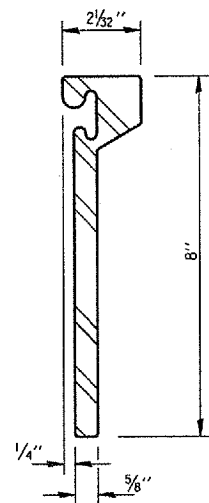
AT PARAPET

GENERAL NOTES

The strip seal shall be made continuous and shall have a minimum thickness of 1/4 ". The configuration of the strip seal shall match the configuration of the Locking Edge Rails.

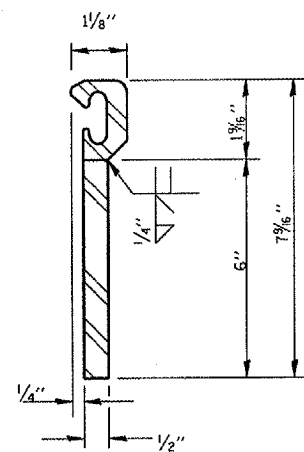
The height and thickness of the Locking Edge Rails shown are minimum dimensions. The actual configuration of the Locking Edge Rails and matching strip seal may vary from manufacturer to manufacturer. Flanged edge rails will not be allowed.

Locking Edge Rails may be spliced at slope discontinuities and stage construction joints. The manufacturer's recommended installation methods shall be followed.

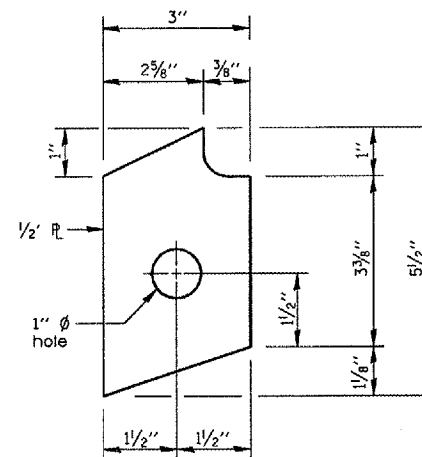


ROLLED (EXTRUDED) RAIL

LOCKING EDGE RAILS



WELDED RAIL



ANCHOR

(for welded rail)

BILL OF MATERIALS

Item	Unit	Total
Strip Seal Expansion Joint Assembly	FEET	43

Strip Seal Expansion Joint Assembly table is shown for ONE" Abutment only

REVISIONS	
NAME	DATE

ILLINOIS DEPARTMENT OF TRANSPORTATION
STRIP SEAL EXPANSION JOINT ASSEMBLY
F.A.I. 412 OVER BNSF RAILROAD
SECTION (50-8VB)I
LASALLE COUNTY
STA. 758 + 10

DATE 06/01/2005

DRAWN BY RLW