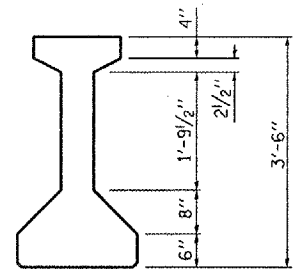
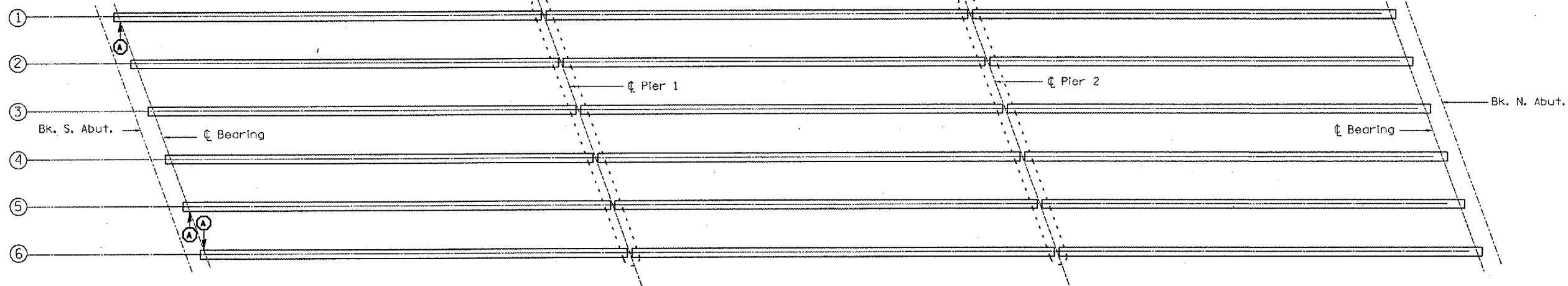
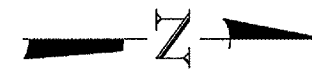


F.A.I. RTE.	SECTION	COUNTY	TOTAL SHEETS	SHEET NO.
412	(50-8VB)I	LASALLE	31	24
FED. ROAD DIST. NO. ILLINOIS				

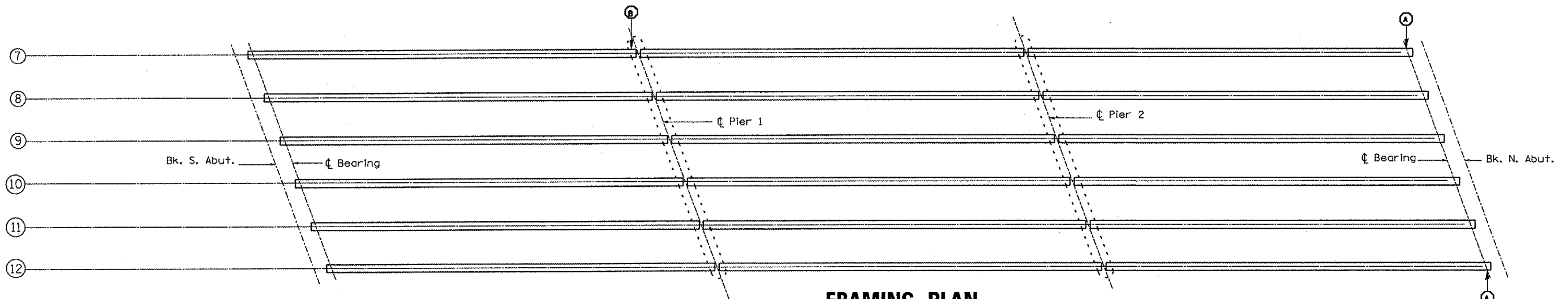


**I BEAM**

**FRAMING PLAN  
S.N. 050-0163 (SB)**



POLYMER MODIFIED PORTLAND CEMENT MORTAR



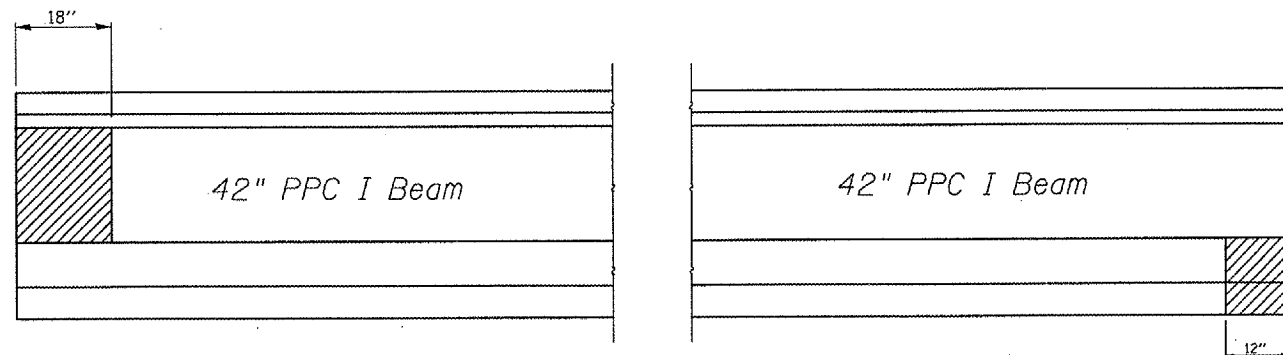
**FRAMING PLAN  
S.N. 050-0164 (NB)**

**S.N. 050-0163 (SB)**

Item	Unit	Total
Polymer Modified Portland Cement Mortar	Sq. Ft.	8

**S.N. 050-0164 (NB)**

Item	Unit	Total
Polymer Modified Portland Cement Mortar	Sq. Ft.	7



REVISIONS	
NAME	DATE

ILLINOIS DEPARTMENT OF TRANSPORTATION  
**P.P.C. I BEAM REPAIR**  
F.A.I. 412 OVER BNSF RAILROAD  
SECTION (50-8VB)I  
LASALLE COUNTY  
STA. 758+10