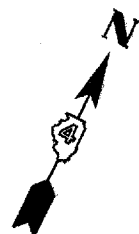


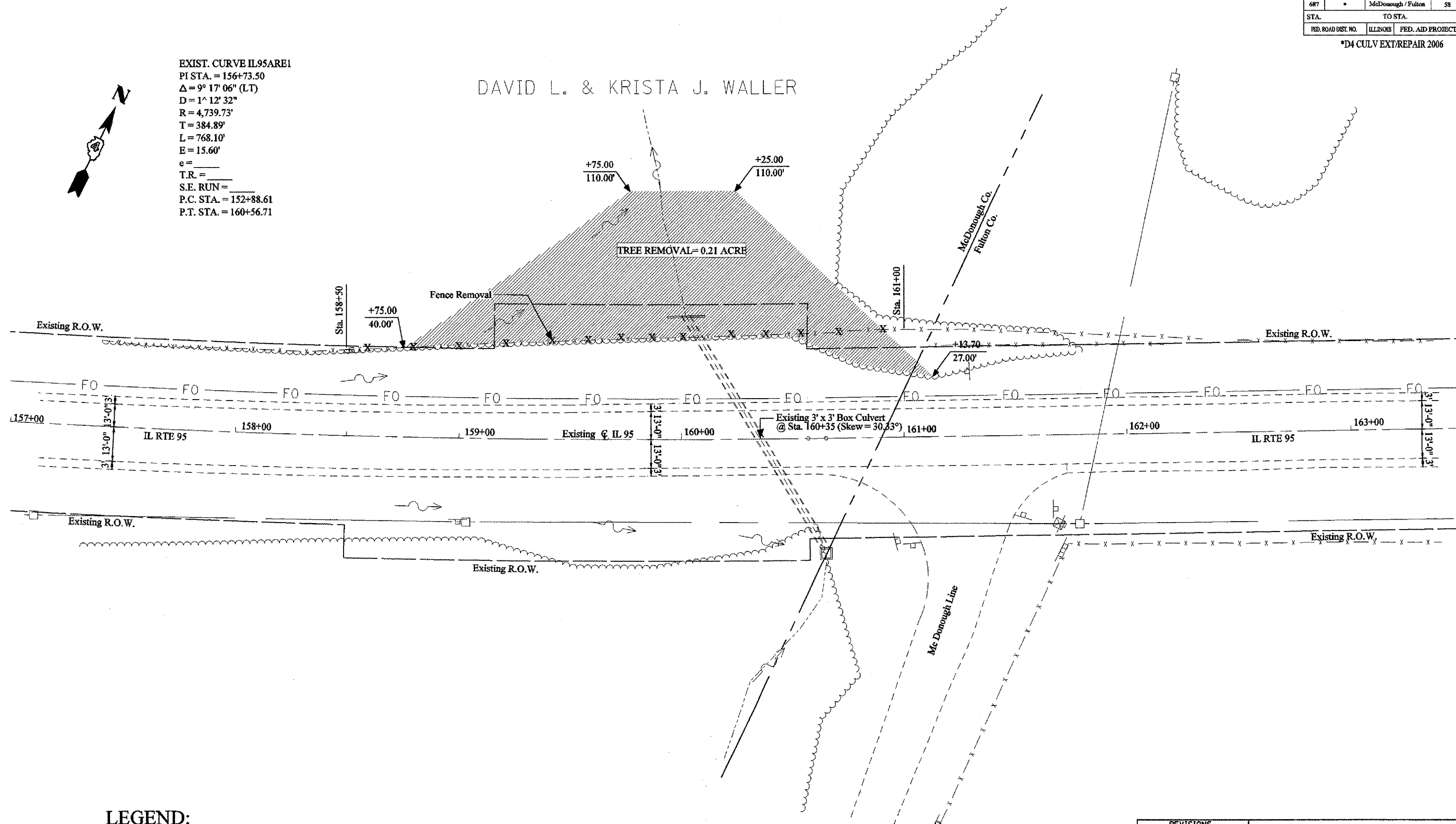
F.A.P. RTE.	SECTION	COUNTY	TOTAL SHEETS	SHEET NO.
687	*	McDonough / Fulton	58	11
STA.		TO STA.		
FED. ROAD DIST. NO.		ILLINOIS	FED. AID PROJECT	

\*D4 CULV EXT/REPAIR 2006

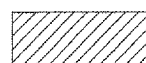
EXIST. CURVE IL95ARE1  
 PI STA. = 156+73.50  
 $\Delta = 9^\circ 17' 06''$  (LT)  
 $D = 1^\circ 12' 32''$   
 $R = 4,739.73'$   
 $T = 384.89'$   
 $L = 768.10'$   
 $E = 15.60'$   
 $e =$   
 $T.R. =$   
 $S.E. RUN =$   
 $P.C. STA. = 152+88.61$   
 $P.T. STA. = 160+56.71$



DAVID L. & KRISTA J. WALLER



LEGEND:



TREE REMOVAL AREA

REVISIONS	
NAME	DATE

ILLINOIS DEPARTMENT OF TRANSPORTATION  
**Existing and Removal Plans**  
**Location # 1**  
 SCALE: VERT. \_\_\_\_\_  
 HORIZ. \_\_\_\_\_  
 DATE \_\_\_\_\_  
 DRAWN BY LCE  
 CHECKED BY ENE

PLOT DATE = 8/29/2006  
 PLOT SCALE = 1" = 40.00'  
 USER NAME = ccrispola