

68452

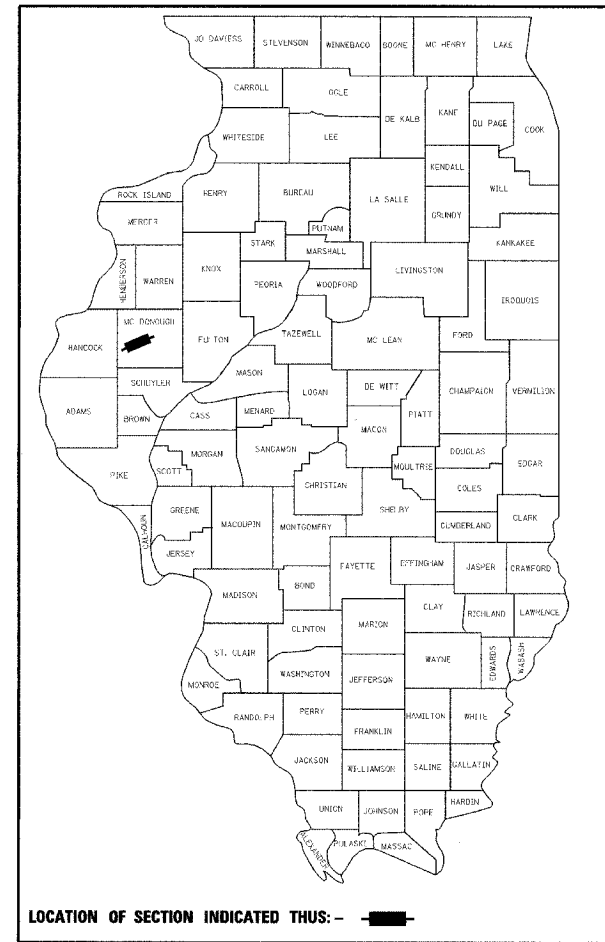
F.A.P. RTE.	SECTION	COUNTY	TOTAL SHEETS	SHEET NO.
315	(55-2)A	MCDONOUGH	55	1

D-94-034-05

STATE OF ILLINOIS
DEPARTMENT OF TRANSPORTATION
DIVISION OF HIGHWAYS

PROPOSED HIGHWAY PLANS

F.A.P. ROUTE 315 (IL. ROUTE 336)
SECTION (55-2)A
PROJECT NO. ACNHF-0315 (040)
GRADING AND DRAINAGE
MCDONOUGH COUNTY
C94-038-05



LOCATION OF SECTION INDICATED THUS: -

TOTAL SHEETS = 55

STATE OF ILLINOIS
DEPARTMENT OF TRANSPORTATION
DIVISION OF HIGHWAYS

SUBMITTED SEPT 2 20 05
John E. Crane
DEPUTY DIRECTOR OF HIGHWAYS, REGION ENGINEER

October 14, 20 05
Mike Hine
ENGINEER OF DESIGN AND ENVIRONMENT

October 14, 20 05
Eric E. Ham
DEPUTY DIRECTOR, DIVISION OF HIGHWAYS



Kenneth M. Coulter 9/2/05
KENNETH M. COULTER DATE
062-038839
EXP. DATE 11/30/05

PRINTED BY THE AUTHORITY OF THE STATE OF ILLINOIS

PHONE: 671-3453
IDOT PROJECT ENGINEER: TOM LACY
IDOT LIASON ENGINEER: ELIAS ELDERZI PHONE: 671-3459

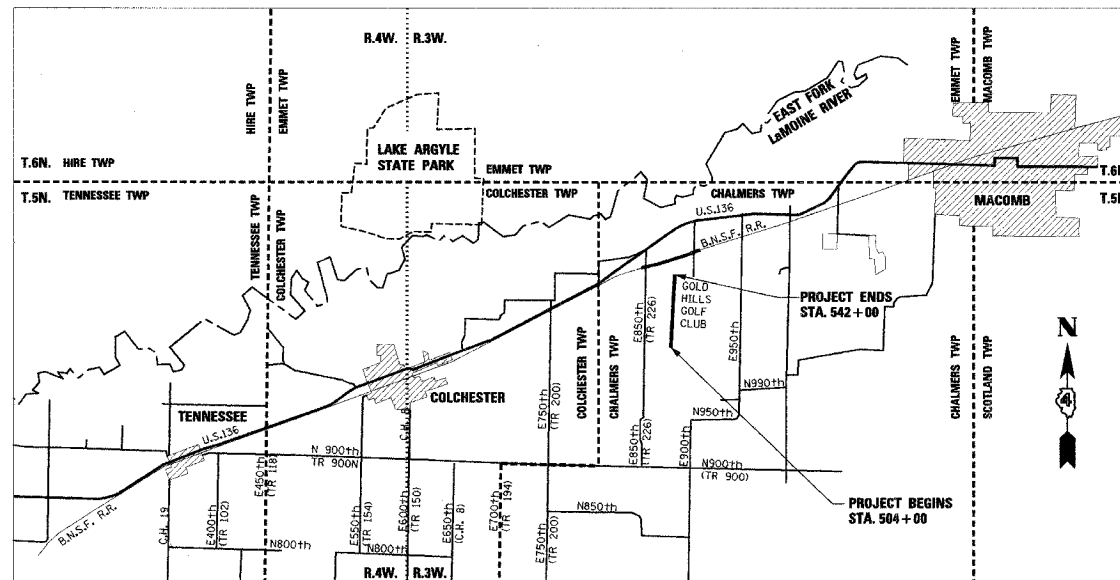
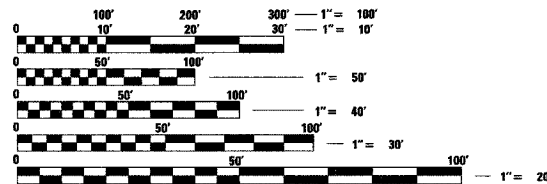
FOR INDEX OF SHEETS, SEE SHEET NO. 2

LIST OF STANDARDS

280001-02	542301	602306	702001-05	000001-04
285001-01	542606	602701		
		604001-02		BLR 18-4
		604106		
		630301-03		

DESIGN DESIGNATION
7000 (ADT) (2028) RURAL 2.26 (FD-20)

SURVEY BOOK NOS.
(BOOK NO'S TO BE FURNISHED BY DEPT.)



LOCATION MAP



GROSS LENGTH OF IMPROVEMENT = 3,800 FEET (0.72 MILES)
NET LENGTH OF IMPROVEMENT = 3,800 FEET (0.72 MILES)

FULL SIZE PLANS HAVE BEEN PREPARED USING STANDARD ENGINEERING SCALES, REDUCED SIZED PLANS WILL NOT CONFORM TO STANDARD SCALES, IN MAKING MEASUREMENTS ON REDUCED PLANS, THE ABOVE SCALES MAY BE USED.

J.U.L.I.E.
JOINT UTILITY LOCATION INFORMATION FOR EXCAVATION
1-800-892-0123

CATALOG NO. 030010-05D
CONTRACT NO. 68452

NPDES PERMIT REQUIRED

DESIGNED BY:



STS CONSULTANTS

111 NE Jefferson Ave.
Peoria, Illinois 61602
Ph(309)676-8464
FAX(309)676-5445
DESIGN FIRM REGISTRATION
NO. 184-001518