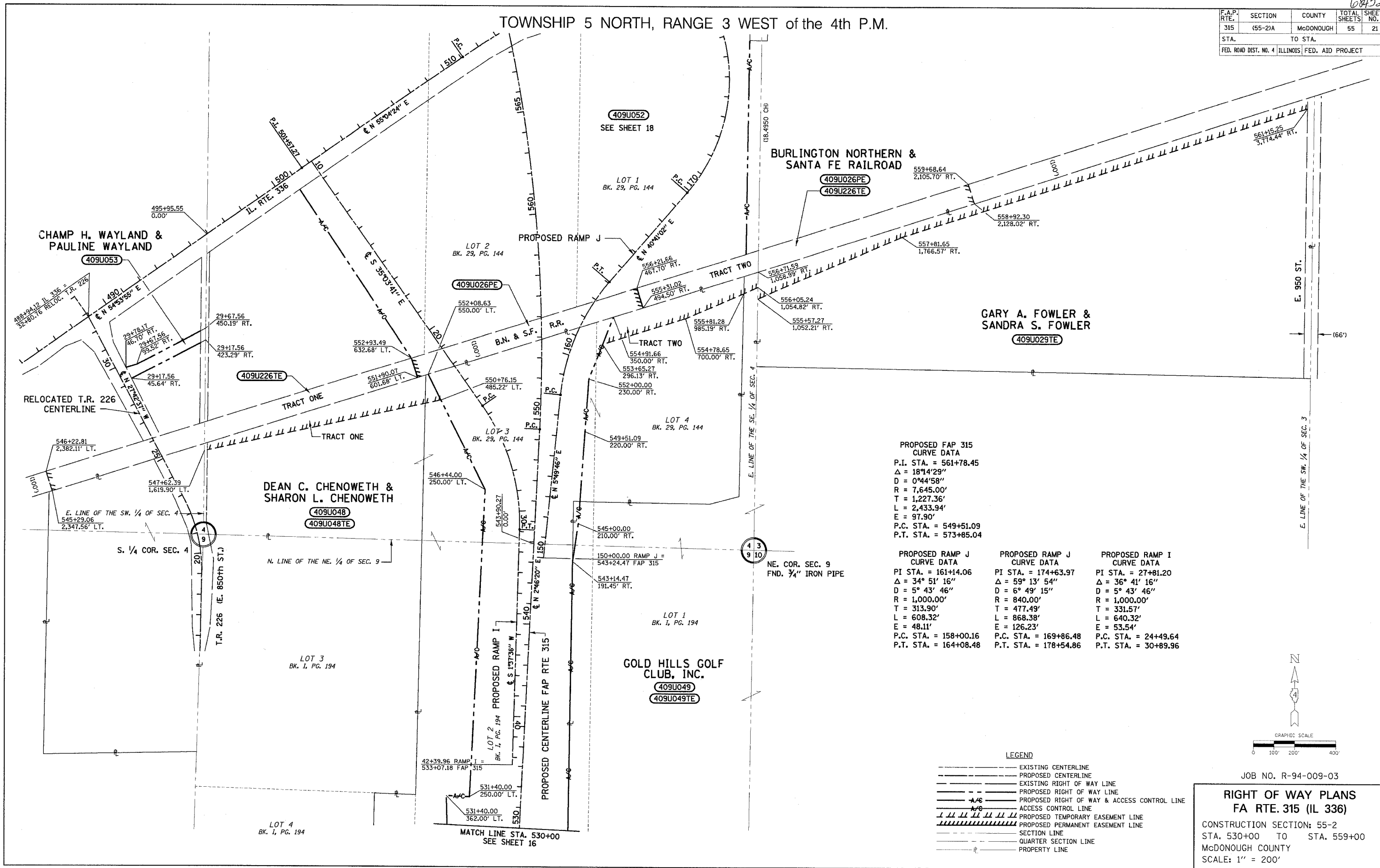


68452

TOWNSHIP 5 NORTH, RANGE 3 WEST of the 4th P.M.

F.A.P. RTE.	SECTION	COUNTY	TOTAL SHEETS	SHEET NO.
315	(55-2)A	McDONOUGH	55	21
STA.	TO STA.			
FED. ROAD DIST. NO. 4 ILLINOIS FED. AID PROJECT				



PROPOSED FAP 315
CURVE DATA
P.I. STA. = 561+78.45
Δ = 18°14'29"
D = 0°44'58"
R = 7,645.00'
T = 1,227.36'
L = 2,433.94'
E = 97.90'
P.C. STA. = 549+51.09
P.T. STA. = 573+85.04

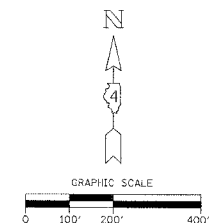
PROPOSED RAMP J
CURVE DATA
PI STA. = 161+14.06
Δ = 34° 51' 16"
D = 5° 43' 46"
R = 1,000.00'
T = 313.90'
L = 608.32'
E = 48.11'
P.C. STA. = 158+00.16
P.T. STA. = 164+08.48

PROPOSED RAMP J
CURVE DATA
PI STA. = 174+63.97
Δ = 59° 13' 54"
D = 6° 49' 15"
R = 840.00'
T = 477.49'
L = 868.38'
E = 126.23'
P.C. STA. = 169+86.48
P.T. STA. = 178+54.86

PROPOSED RAMP I
CURVE DATA
PI STA. = 27+81.20
Δ = 36° 41' 16"
D = 5° 43' 46"
R = 1,000.00'
T = 331.57'
L = 640.32'
E = 53.54'
P.C. STA. = 24+49.64
P.T. STA. = 30+89.96

LEGEND

---	EXISTING CENTERLINE
---	PROPOSED CENTERLINE
---	EXISTING RIGHT OF WAY LINE
---	PROPOSED RIGHT OF WAY LINE
---	PROPOSED RIGHT OF WAY & ACCESS CONTROL LINE
---	ACCESS CONTROL LINE
---	PROPOSED TEMPORARY EASEMENT LINE
---	PROPOSED PERMANENT EASEMENT LINE
---	SECTION LINE
---	QUARTER SECTION LINE
---	PROPERTY LINE



JOB NO. R-94-009-03
RIGHT OF WAY PLANS
FA RTE. 315 (IL 336)
CONSTRUCTION SECTION: 55-2
STA. 530+00 TO STA. 559+00
McDONOUGH COUNTY
SCALE: 1" = 200'