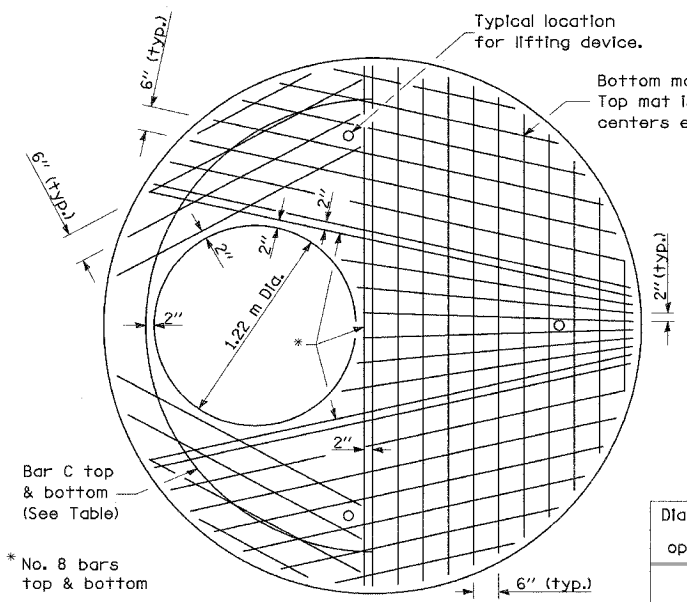


68452

F.A.P. RTE.	SECTION	COUNTY	TOTAL SHEETS	SHEET NO.
315	(55-2)A	McDONOUGH	55	23
STA.	TO STA.			
FED. ROAD DIST. NO. 4 ILLINOIS FED. AID PROJECT				

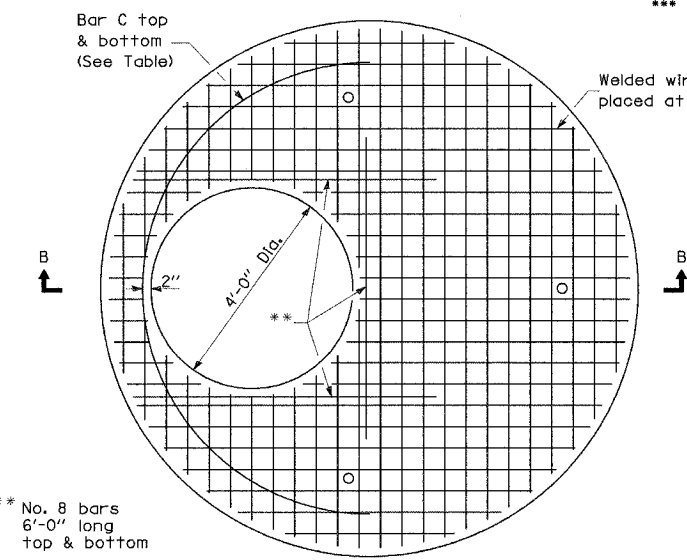


**PLAN**

Showing Rebar Reinforcement

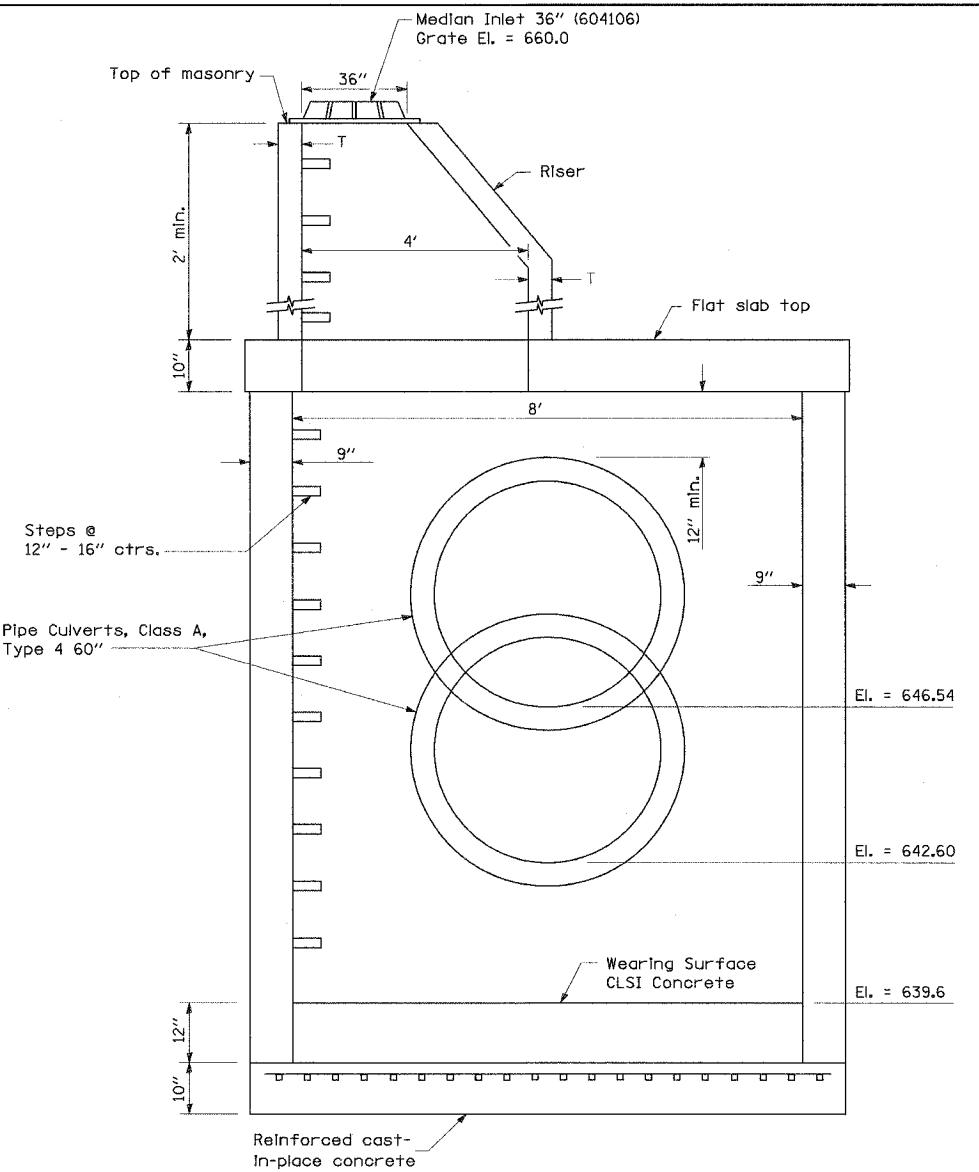
Diameter of opening	Reinforcement Bar Size	Reinforcement "As" WWF each direction	No. 4 Bar C	
			Length	Radius
4'-0"	Bottom mat No. 8	Bottom mat *** 1.57 sq. in./ft.	12'-6"	4'-0"
	Top mat No. 4	Top mat *** 0.24 sq. in./ft.		

\*\*\* A maximum of two layers of welded wire fabric may be used to satisfy the required "As" for each mat.



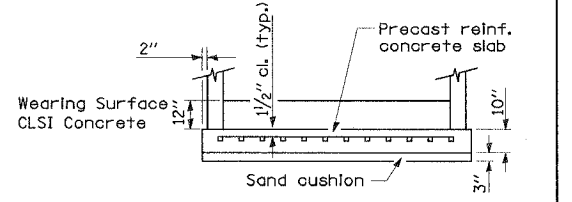
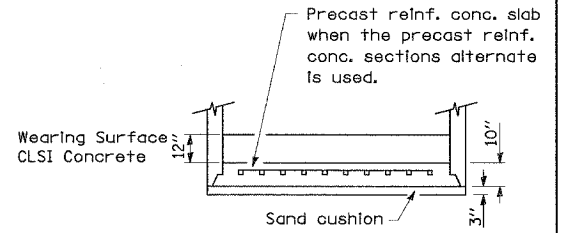
**PLAN**

Showing Welded Wire Fabric Reinforcement



**ELEVATION**

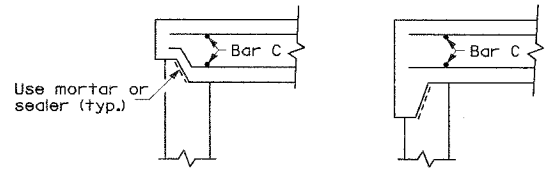
(With Flat Slab Top and Riser)



**ALTERNATE BOTTOM SLABS**

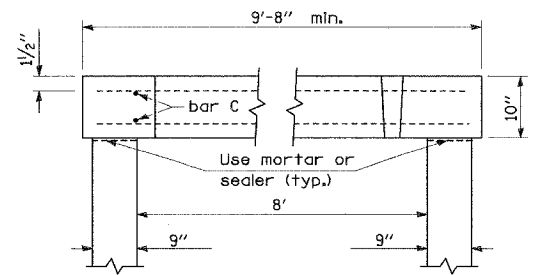
**GENERAL NOTES**

Joint configuration and dimensions of flat slab top shall match and fit the riser joint detail.  
 Lifting devices shall be approved by the Engineer.  
 Bottom slabs shall be reinforced with a minimum of 0.67 sq. in./ft. in both directions.  
 See Standard 602701 for details of cast iron steps.



**ALTERNATE JOINT CONFIGURATIONS**

ALTERNATE MATERIALS FOR RISER WALLS	T (min)
Concrete Masonry Units	5"
Precast Reinforced Concrete Sections	4"
Cast-In-Place Concrete	6"



**SECTION B-B**

**DRAINAGE STRUCTURE NO.1 DETAILS**

**162.2' LT. STA. 519 + 00**

NOT TO SCALE

REVISIONS	
NAME	DATE

ILLINOIS DEPARTMENT OF TRANSPORTATION  
**DRAINAGE STRUCTURE NO. 1 DETAILS**  
 162.2' LT. STA. 519 + 00  
 IL. ROUTE 336

DATE 8/29/05  
 DRAWN BY DLC  
 CHECKED BY KMC