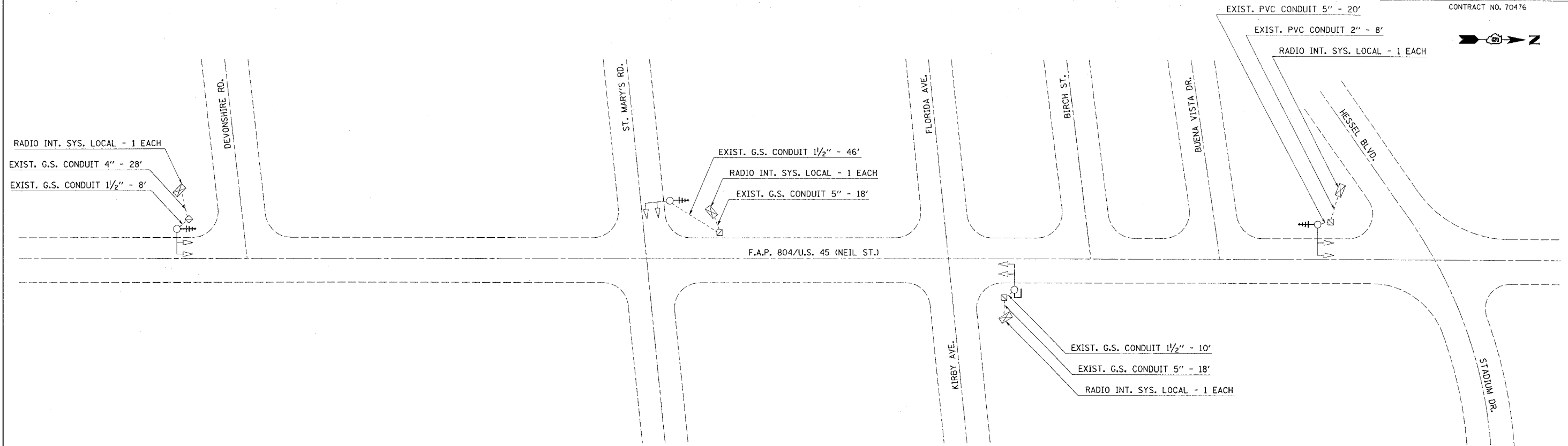


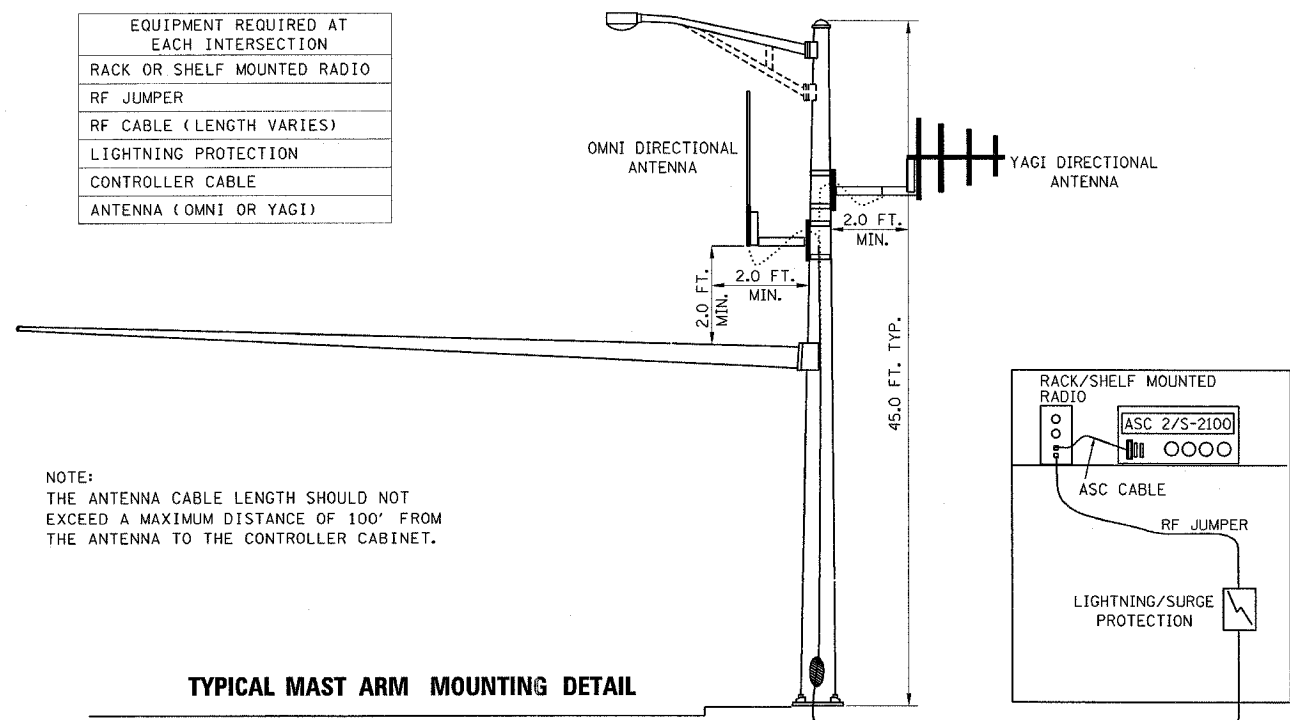
F.A.P. RTE.	SECTION	COUNTY	TOTAL SHEETS	SHEET NO.
804	25R,TS	CHAMPAIGN	19	16A

CONTRACT NO. 70476



RADIO INTERCONNECT ANTENNA MOUNTING DETAILS

EQUIPMENT REQUIRED AT EACH INTERSECTION
RACK OR SHELF MOUNTED RADIO
RF JUMPER
RF CABLE (LENGTH VARIES)
LIGHTNING PROTECTION
CONTROLLER CABLE
ANTENNA (OMNI OR YAGI)



NOTE:
THE ANTENNA CABLE LENGTH SHOULD NOT EXCEED A MAXIMUM DISTANCE OF 100' FROM THE ANTENNA TO THE CONTROLLER CABINET.

TYPICAL MAST ARM MOUNTING DETAIL

NOT TO SCALE

NOTE:
RADIO ANTENNA TO BE MOUNTED ON MAST ARM STRAIN POLE (SEE ANTENNA DETAILS).

LEGEND

- ⊠ EXISTING CONTROLLER AND CABINET
- ⊙ EXISTING SIGNAL HEAD AND POST
- ⊙ EXISTING MAST ARM ASSEMBLY, SIGNAL HEAD
- ⊠ EXISTING HANDHOLE
- ⊠ EXISTING SERVICE INSTALLATION POLE
- EXISTING CONDUIT
- ⊠ PROPOSED RADIO INTERCONNECT ANTENNA - YAGI DIRECTIONAL
- ⊠ PROPOSED RADIO INTERCONNECT ANTENNA - OMNI DIRECTIONAL