

STATE OF ILLINOIS
DEPARTMENT OF TRANSPORTATION
DIVISION OF HIGHWAYS

**PROPOSED
HIGHWAY PLANS**

F.A.P. ROUTE 310 (U.S. 67/IL 267)
SECTION 81B-1
PROJECT NO: ACF-0310(092)
MORGAN COUNTY

STRUCTURE REMOVAL AND REPLACEMENT
C-96-517-06

FOR INDEX OF SHEETS, SEE SHEET NO. 2

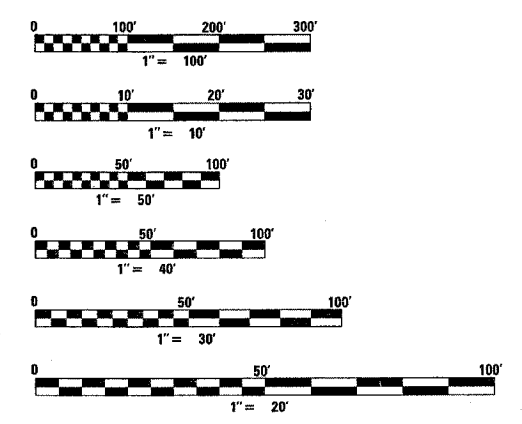
PROJECT ENGINEER

JOHN BARANZELLI: 217-782-5503

SQUAD LEADER

MARCUS BRUCE: 217-785-5336

ENGLISH RATIOS



FULL SIZE PLANS HAVE BEEN PREPARED USING STANDARD ENGINEERING SCALES. REDUCED SIZED PLANS WILL NOT CONFORM TO STANDARD SCALES. IN MAKING MEASUREMENTS ON REDUCED PLANS, THE ABOVE SCALES MAY BE USED.

J.U.L.I.E.
JOINT UTILITY LOCATION INFORMATION FOR EXCAVATION
1-800-892-0123

CONTRACT NO. 72528

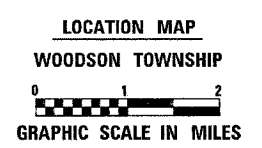
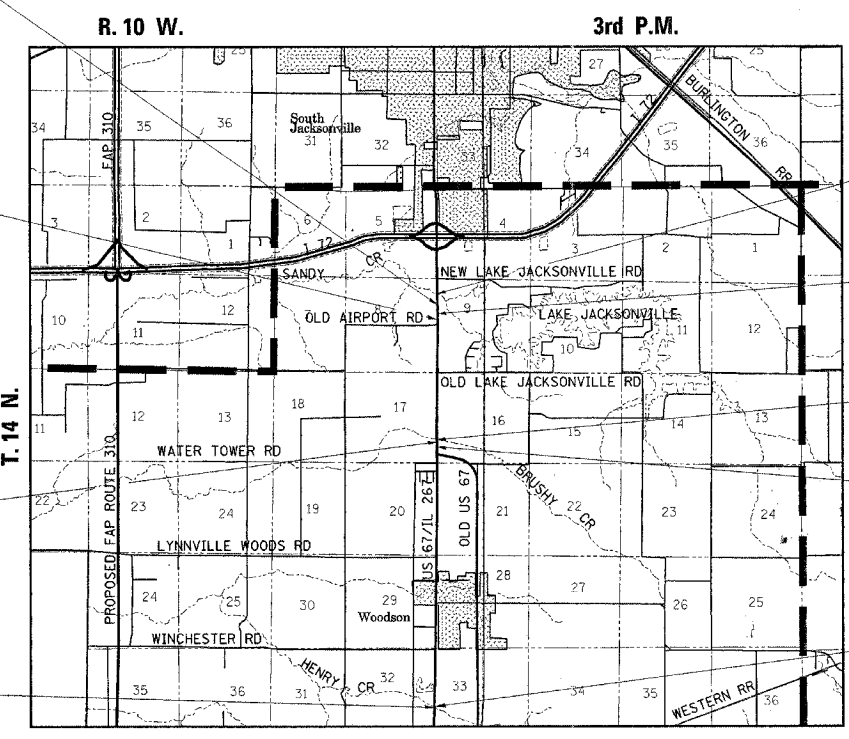
SECTION 81B-1
INCLUDES A 2 SPAN CONTINUOUS STEEL GIRDER (COMPOSITE) STRUCTURE (CARRYING US ROUTE 67 OVER SANDY CREEK) ON REINFORCED CONCRETE INTEGRAL ABUTMENTS AND CONCRETE PIER.
STA 140+34.43
SN 069-0504 (PROP.)
SN 069-0006 (EX.)

SECTION 81B-1
INCLUDES A REINFORCED CONCRETE BOX CULVERT 8' x 4' (CARRYING US ROUTE 67 OVER A TRIBUTARY TO SANDY CREEK)
STA 156+36.00
SN 069-7501 (PROP.)
NO EXIST. SN

SECTION 81B-1
INCLUDES A REINFORCED CONCRETE BOX CULVERT 2 @ 12' x 12' (CARRYING US ROUTE 67 OVER BRUSHY CREEK)
STA 223+51.00
SN 069-2505 (PROP.)
NO EXIST. SN

SECTION 81B-1
INCLUDES A REINFORCED CONCRETE BOX CULVERT 12' x 12' (CARRYING US ROUTE 67 OVER HENRY CREEK)
STA 1009+73.88
SN 069-7502 (PROP.)
NO EXIST. SN

DESIGN DESIGNATION
ADT 6,000 (2026) PRINCIPAL ARTERIAL
3.9% TRUCKS



NET LENGTH LOCATION 1 = 800.00 FT. = 0.152 MILES
NET LENGTH LOCATION 2 = 747.59 FT. = 0.141 MILES
NET LENGTH LOCATION 3 = 696.50 FT. = 0.132 MILES
NET LENGTH LOCATION 4 = 740.00 FT. = 0.140 MILES
TOTAL NET LENGTH SECTION 81B-1 = 2984.09 FT. = 0.565 MILES



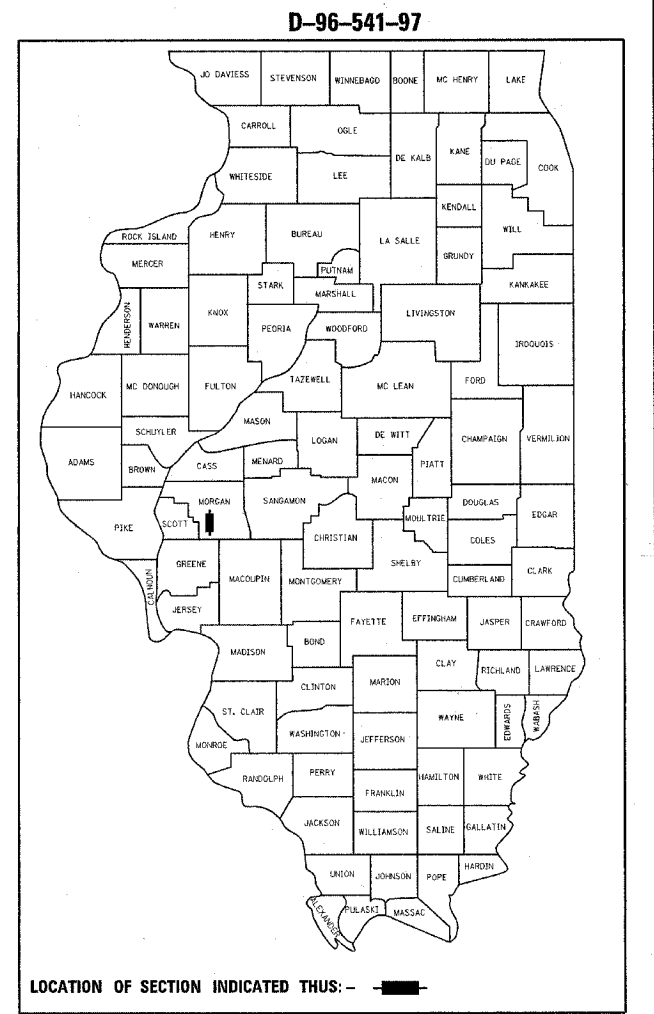
SECTION 81B-1
LOCATION 4 (SANDY CREEK)
BEGIN STA 135+50
END STA 142+90

SECTION 81B-1
LOCATION 3 (N OF AIRPORT RD)
BEGIN STA 153+03.50
END STA 160+00.00

SECTION 81B-1
LOCATION 2 (BRUSHY CREEK)
BEGIN STA 1158+50
END STA 220+00

STATION EQUATION
STA 1160+02.26 BK =
STA 225+95.33 AH

SECTION 81B-1
LOCATION 1 (HENRY CREEK)
BEGIN STA 1006+00
END STA 1014+00



STATE OF ILLINOIS
DEPARTMENT OF TRANSPORTATION
DIVISION OF HIGHWAYS

SUBMITTED August 29, 2005
Chris M. Dean DISTRICT ENGINEER

October 14, 2005
Mike Hare ENGINEER OF DESIGN AND ENVIRONMENT

October 14, 2005
Eric S. Harms DEPUTY DIRECTOR, DIVISION OF HIGHWAYS

**PRINTED BY THE AUTHORITY
OF THE STATE OF ILLINOIS**