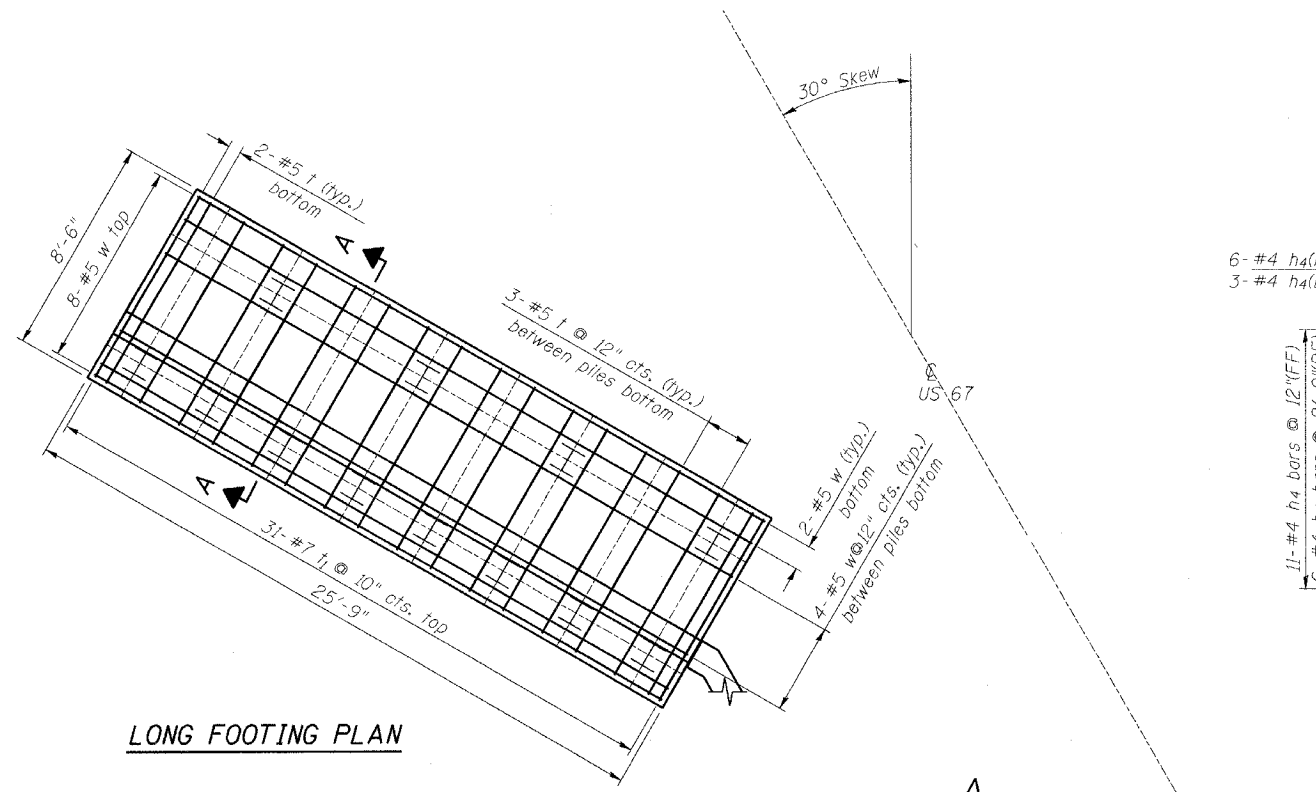
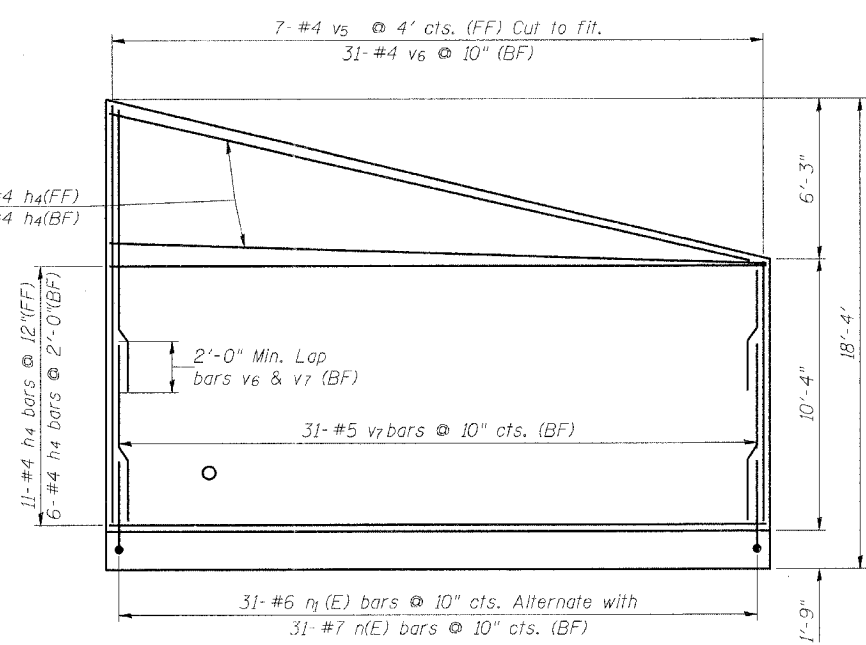


STATE OF ILLINOIS  
DEPARTMENT OF TRANSPORTATION

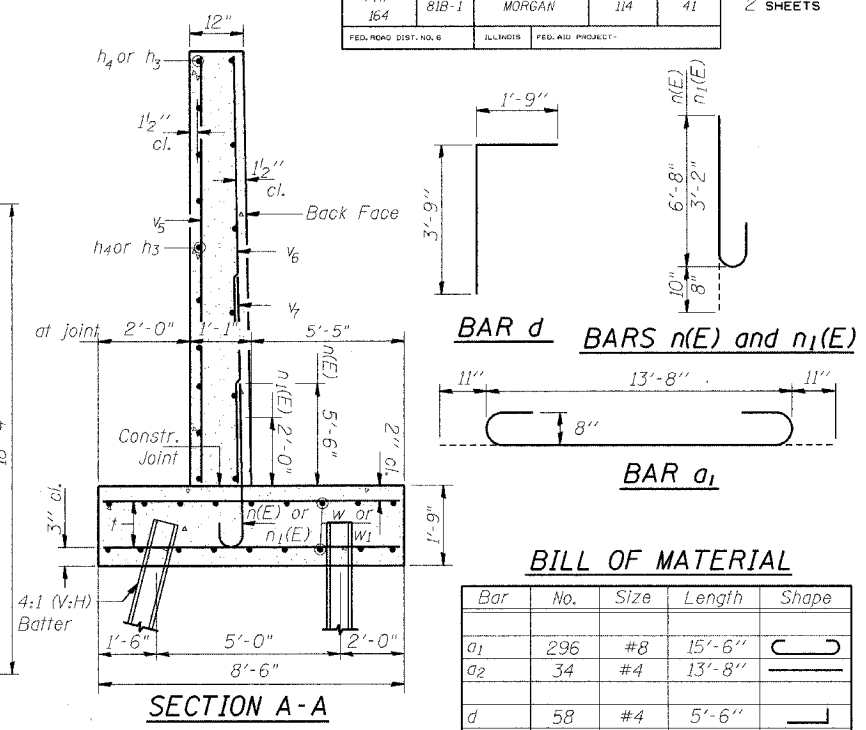
ROUTE NO.	SECTION	COUNTY	TOTAL SHEETS	SHEET NO.	SHEET NO. 2 2 SHEETS
FAP 164	81B-1	MORGAN	114	41	
FED. ROAD DIST. NO. 6	ILLINOIS	FED. AID PROJECT			



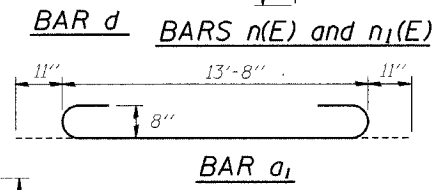
LONG FOOTING PLAN



LONG WING ELEVATION



SECTION A-A

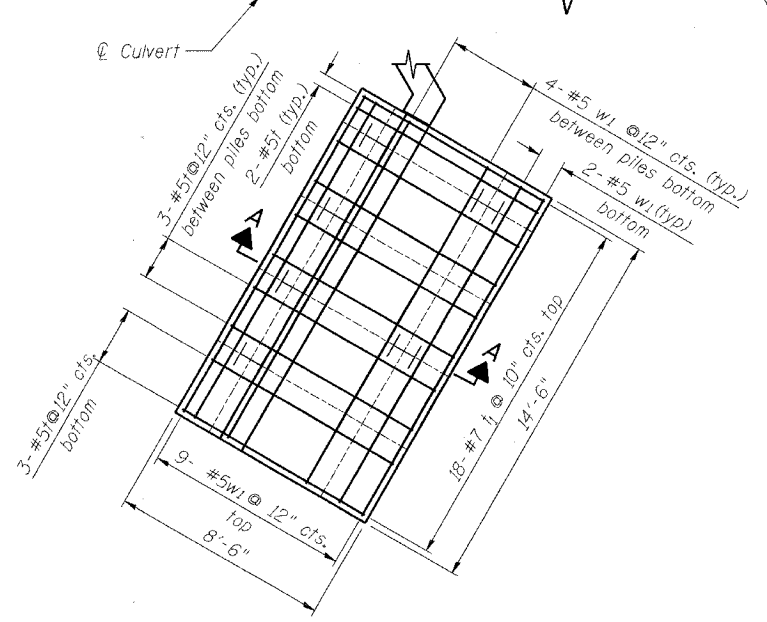


BILL OF MATERIAL

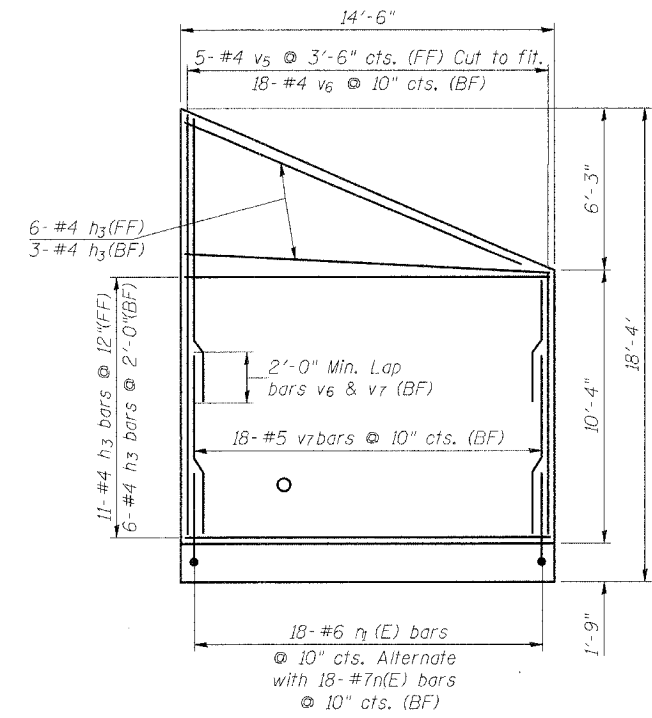
Bar	No.	Size	Length	Shape
a1	296	#8	15'-6"	U
a2	34	#4	13'-8"	U
d	58	#4	5'-6"	L
h	64	#7	39'-0"	—
h1	48	#5	38'-4"	—
h2	12	#6	15'-9"	—
h3	52	#4	14'-3"	—
h4	52	#4	25'-6"	—
h5				—
h6				—
n(E)	98	#7	7'-6"	U
n1(E)	98	#6	3'-10"	U
t	78	#5	8'-3"	—
t1	98	#7	8'-3"	—
v	276	#5	12'-6"	—
v1	276	#5	3'-8"	—
v2	8	#5	13'-3"	—
v3	8	#5	6'-6"	—
v4	76	#5	11'-9"	—
v5	24	#4	16'-3"	—
v6	98	#4	12'-9"	—
v7	98	#5	7'-3"	—
w	36	#5	25'-6"	—
w1	36	#5	14'-3"	—
Concrete Box Culverts	Cu. Yd.		263	
Reinforcement Bars, Epoxy Coated	Pound		2066	
Reinforcement Bars	Pound		32862	
Furnishing Steel Piles	Foot		1400	
Driving Steel Piles	Foot		1400	
Test Pile	Each		1	

PILE DATA

Type: HP 12x53  
Capacity: 40 tons capacity,  
Driven to 60 tons.  
Estimated Length: 40'  
No. Required: 35 plus one test pile



SHORT FOOTING PLAN



SHORT WING ELEVATION

SHOWING FOOTING  
REINFORCEMENT

DESIGNED	-	PJP
CHECKED	-	MAA
DRAWN	-	MF
CHECKED	-	BSC

PLANS PREPARED BY:  
**WOOLPERT** LLP  
345 Fountains Pkwy, Suite A  
Fairview Heights, IL  
62208-2044  
618.632.7004  
FAX: 618.632.0100

STATE OF ILLINOIS  
DEPARTMENT OF TRANSPORTATION  
US ROUTE 67 OVER  
HENRY CREEK  
FAP 164 - SECTION 81B-1  
MORGAN COUNTY  
STATION 1009+73.88  
CULVERT PLAN LONGITUDINAL SECTION  
AND DETAILS