

B.M.: Chiseled "□" center of east headwall Sta. 223+52.28, 28.19 ft. Lt., Elev. 634.53

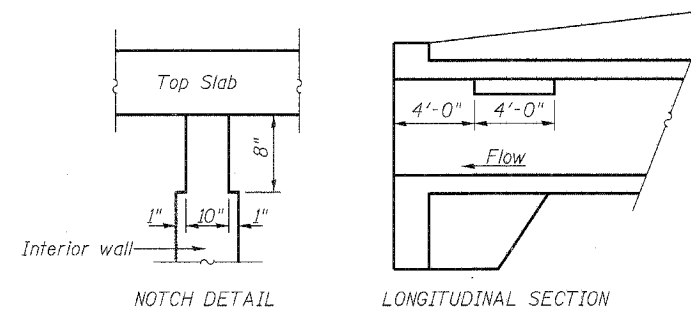
Existing Structure: Existing SN-none, at Sta. 223+51 built in 1924 under Section 81 on Route SBI 3 is a double barrel reinforced concrete box culvert with spans of 5.6 ft. a rise of 4.65 ft., a length of 57 ft. and has ninety-degree wingwalls. The Culvert is not Skewed. Traffic will be detoured during construction. No Salvage

FAP RTE. NO.	SECTION	COUNTY	TOTAL SHEETS	SHEET NO.	SHEET NO. 1 OF 5 SHEETS
310	81B-1	MORGAN	114	44	
FED. ROAD DIST. NO. 7		ILLINOIS	FED. AID PROJECT-		

Contract Number: 72528

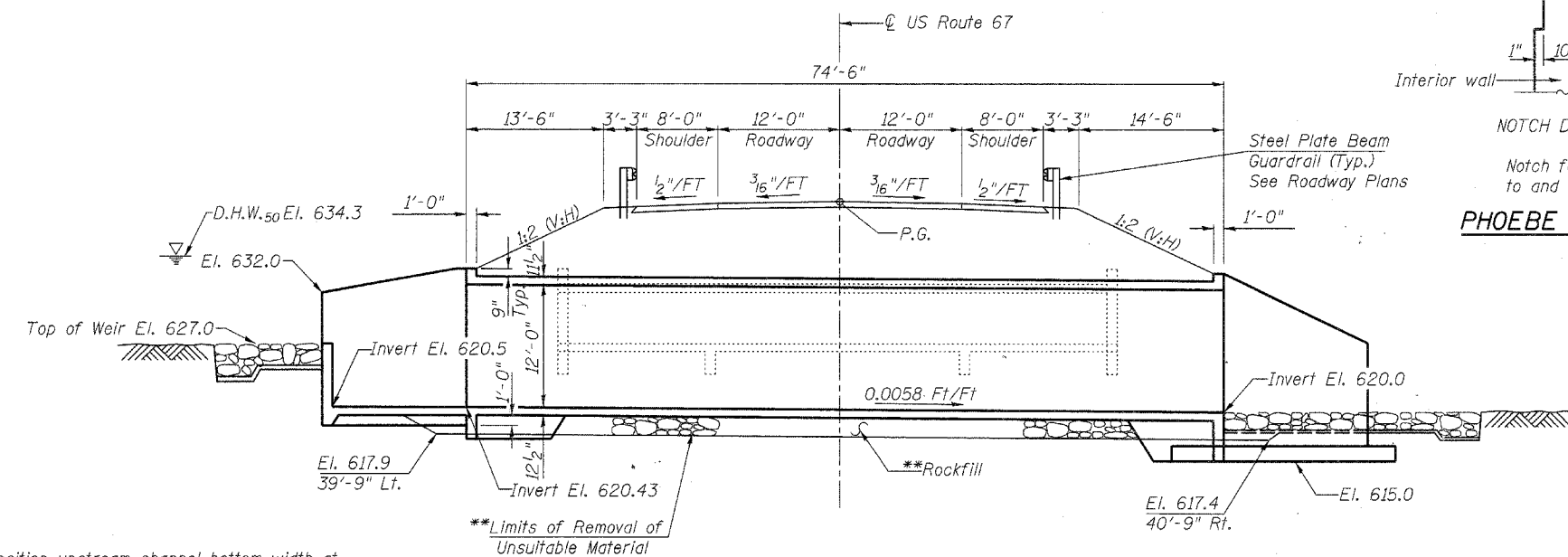
GENERAL NOTES

Reinforcement Bars shall conform to the requirements of AASHTO M31 or M322 Grade 60. For Backfilling and embankment, see Standard Specifications. Layout of Slope Protection System may be varied in the field to suit ground conditions as directed by the Engineer. Exposed edges shall have standard 3/4" chamfer unless otherwise noted. All construction joints shall be bonded.



PHOEBE NESTING SITE ON BOX CULVERT

Notch formed by rough-finished board attached to and removed with formwork.

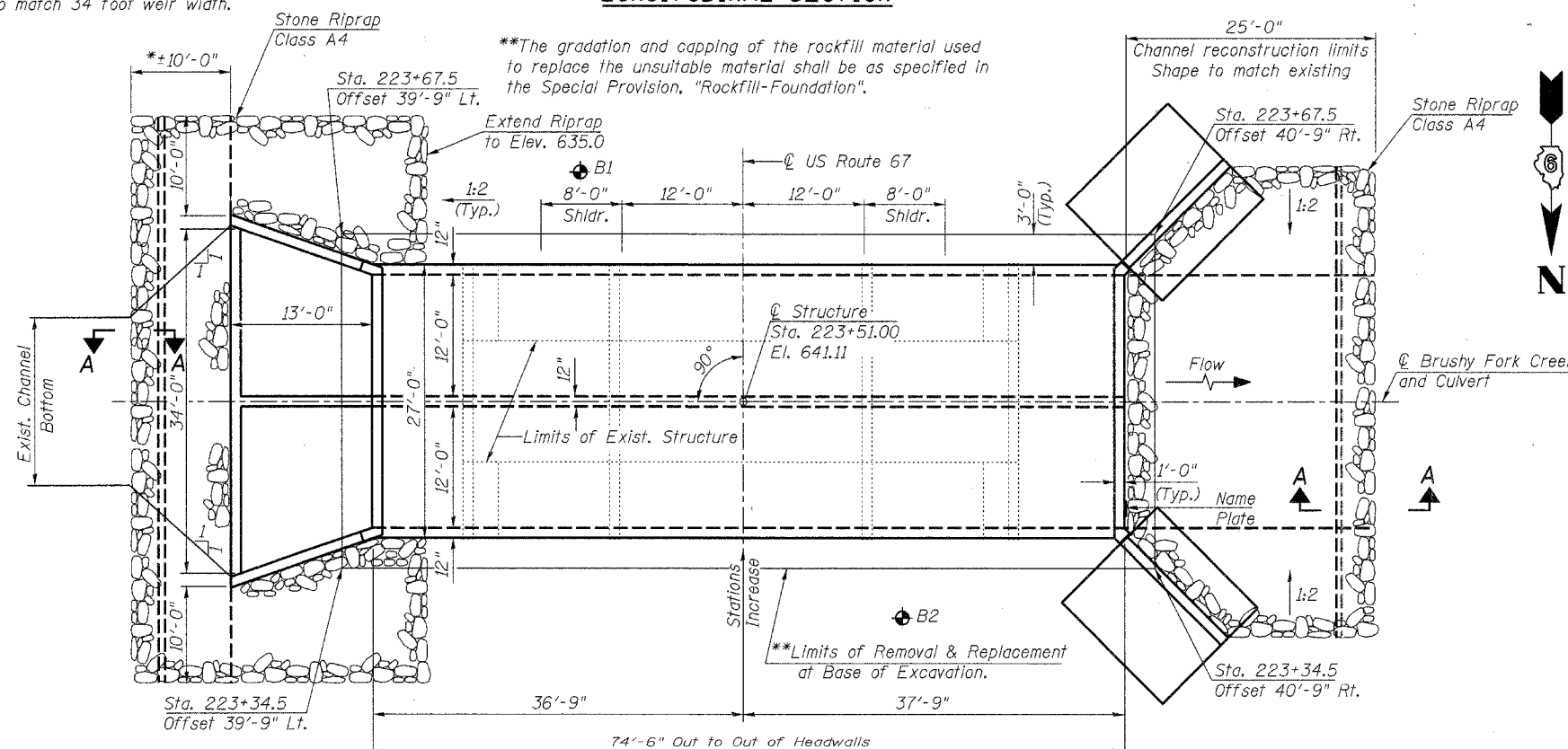


LONGITUDINAL SECTION

*Transition upstream channel bottom width at a 1 to 1 taper to match 34 foot weir width.

**Limits of Removal of Unsuitable Material

**The gradation and capping of the rockfill material used to replace the unsuitable material shall be as specified in the Special Provision, "Rockfill-Foundation".



PLAN

STATION 223+51.00
BUILT 20__ BY
STATE OF ILLINOIS
F.A.P. ROUTE 310 SEC. 81B-1
LOADING HS20
STR. NO. 069-2505

NAME PLATE

See Std. 515001

APPROVED FOR STRUCTURAL ADEQUACY ONLY

Ralph E. Anderson (JTD)
ENGINEER OF BRIDGES AND STRUCTURES

INDEX OF SHEETS

1. General Plan
2. Culvert Details
3. Culvert Details
4. Boring Logs
5. Boring Logs

LOADING HS20-44

Allow 50#/sq. ft. for future wearing surface.

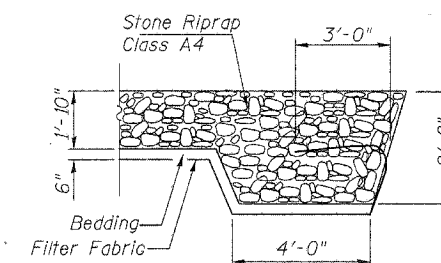
DESIGN SPECIFICATIONS

2002 AASHTO

DESIGN STRESSES

FIELD UNITS

$f_c = 3,500$ psi concrete
 $f_y = 60,000$ psi (reinforcement)



SECTION A-A

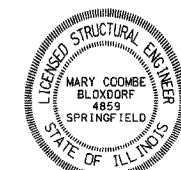
WATERWAY INFORMATION

Drainage Area = 4.0 Sq. Mi. Low Grade Elev. 640.6 @ Sta. 223+00 Max Rec HWE=640.0

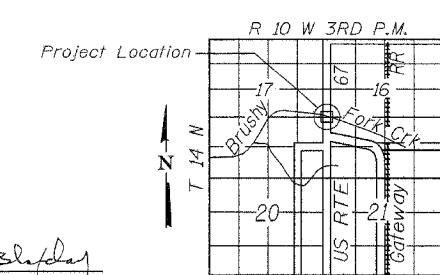
Flood	Freq. Yr.	Q C.F.S.	Opening Sq. Ft.		Nat. H.W.E.	Head - Ft.		Headwater El.	
			Exist.	Prop.		Exist.	Prop.	Exist.	Prop.
Design	10	1092	52	288	634.3	5.93	0.87	638.93	633.87
Base	50	1705	52	288	634.3	5.9	1.3	640.3	635.7
Overtopping	100	1967	52	288	634.5	5.1	1.8	639.6	636.3
Max. Calc.	500	993	52	288	635.1	5.4	2.5	640.5	637.6

PROFILE GRADE
(Along US Route 67)

Sta. 223+00 El. 640.79	Sta. 223+20 El. 640.90	Sta. 223+40 El. 641.01	Sta. 223+60 El. 641.20	Sta. 223+80 El. 641.50	Sta. 224+00 El. 641.81
---------------------------	---------------------------	---------------------------	---------------------------	---------------------------	---------------------------



Mary Coombe Bloxdorf
Illinois Structural No. 4859
Expires 11-30-2004
Date: 11/04/04



LOCATION SKETCH

ILLINOIS DEPARTMENT OF TRANSPORTATION	
SHEET TITLE: GENERAL PLAN & ELEVATION	
PROJECT: US RTE. 67 OVER BRUSHY FORK CREEK FAP ROUTE 310, SECTION 81B-1 MORGAN COUNTY STATION 223+51.00 STRUCTURE NUMBER 069-2505	PROJECT NO. 03002 DATE: 9/30/04 DRAWN BY: TFG CHECKED BY: CME/MCB DRAWING NO. 1
COOMBE-BLOXDORF P.C. Engineers / Land Surveyors Springfield, Illinois Design Firm License No. 184-002703	