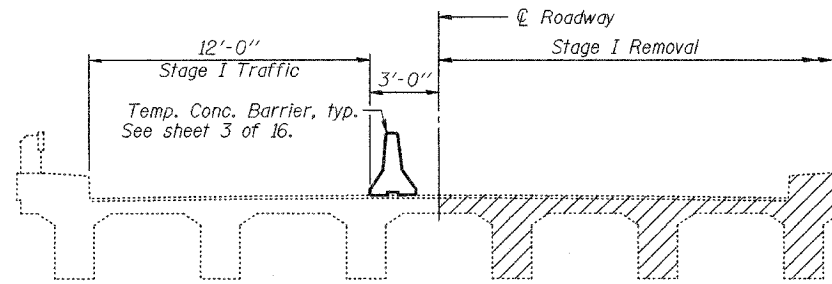
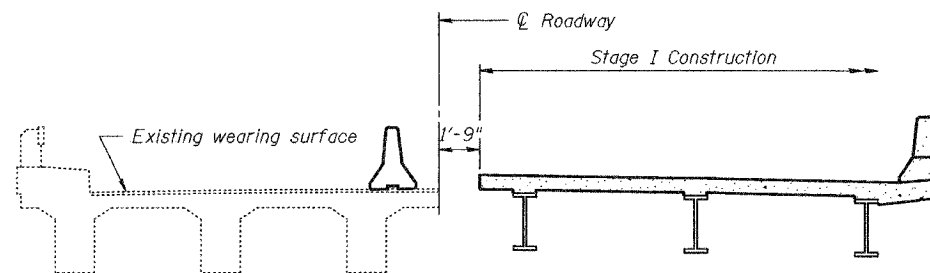


STATE OF ILLINOIS
DEPARTMENT OF TRANSPORTATION

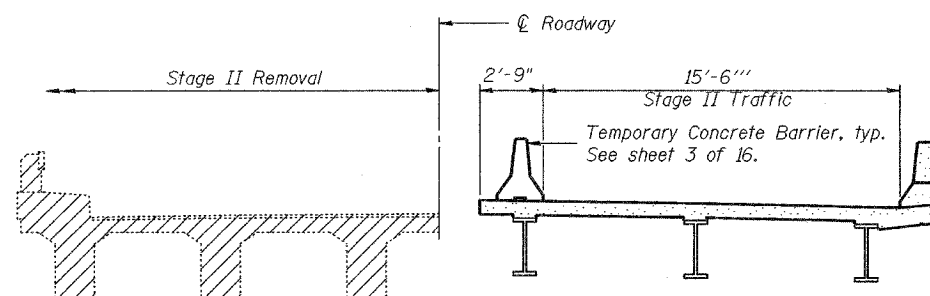
ROUTE NO.	SECTION	COUNTY	ISSUE	SHEET	SHEET NO. 2
F.A.P. 310	81B-1	MORGAN	114	53	16 SHEETS
FED. ROAD DIST. NO. 7	ILLINOIS	FED. AID PROJECT-	Contract #72528		



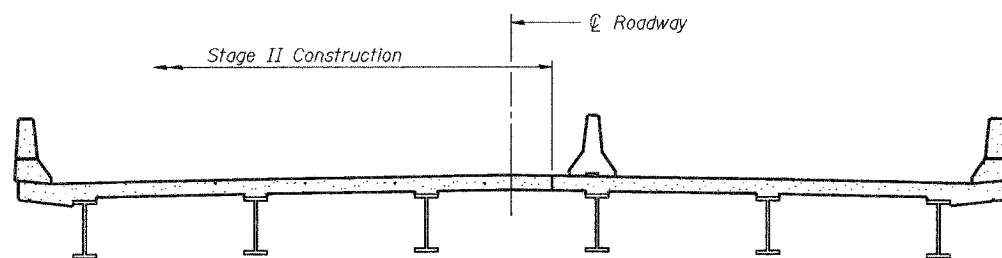
STAGE I REMOVAL



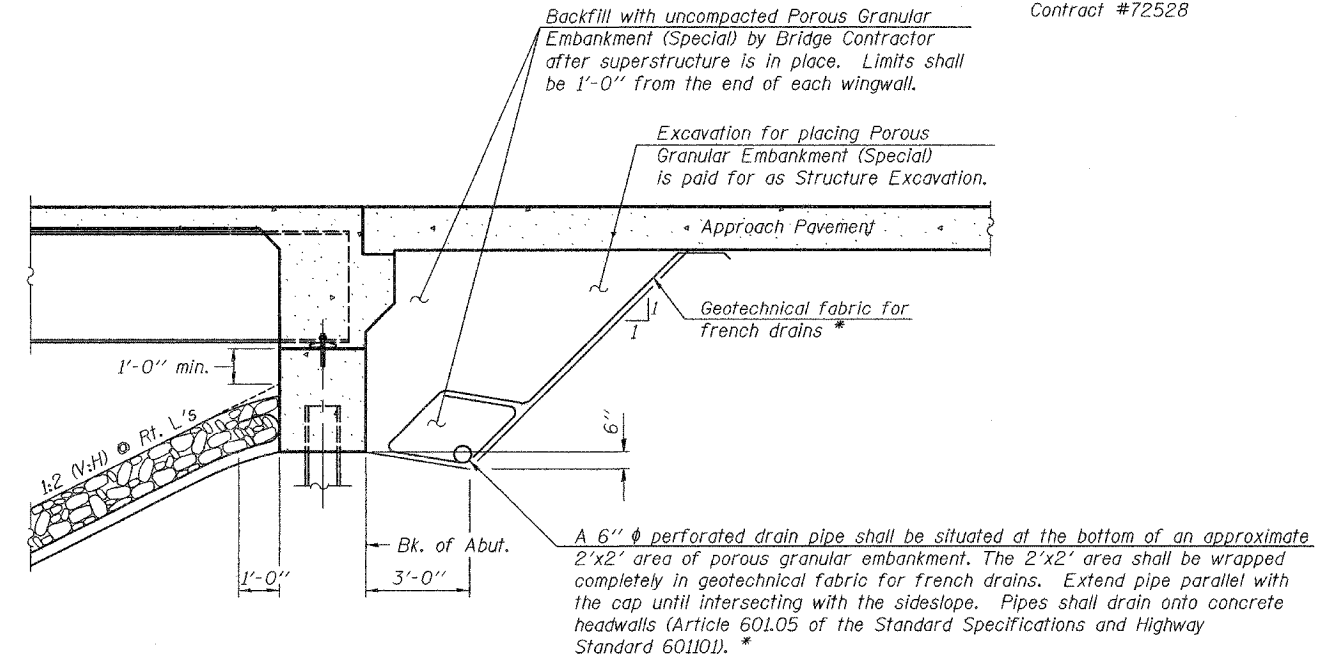
STAGE I CONSTRUCTION



STAGE II REMOVAL

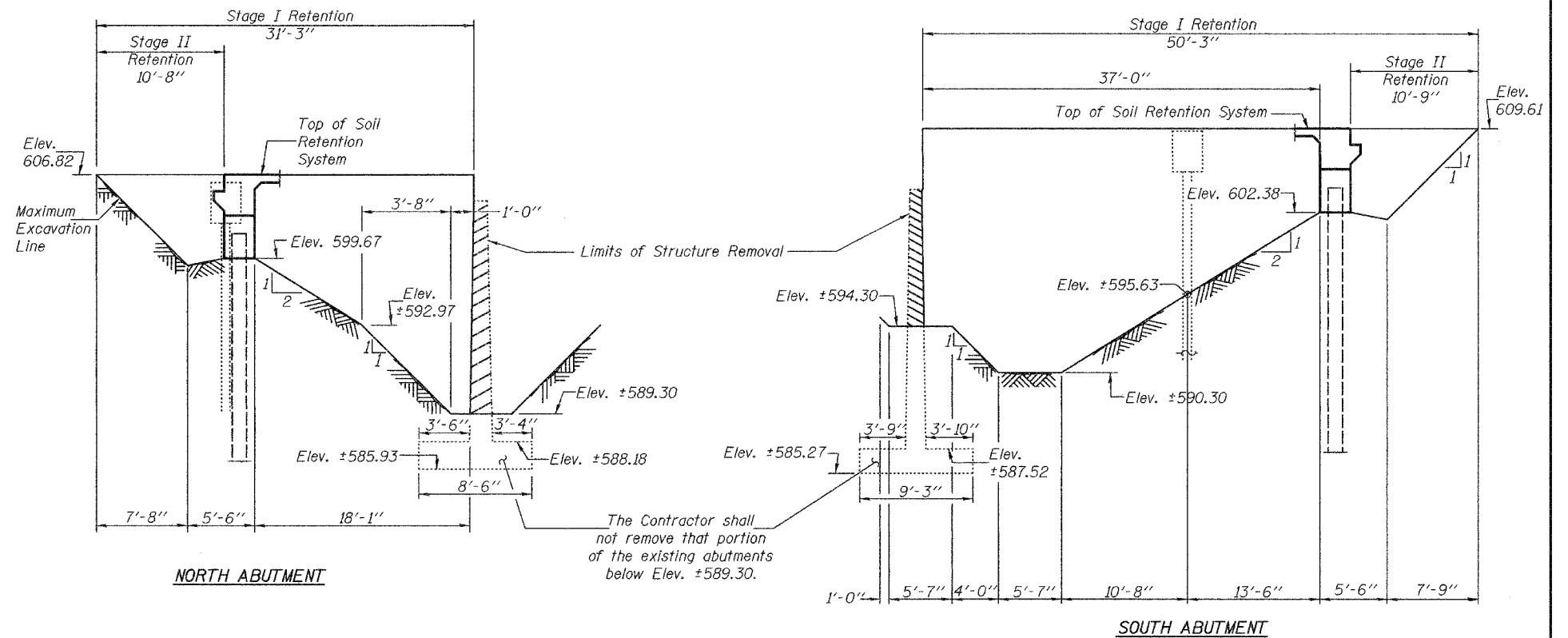


STAGE II CONSTRUCTION



* Included in the cost of Porous Granular Embankment (Special).

SECTION THRU INTEGRAL ABUTMENT



TEMPORARY SOIL RETENTION SYSTEM

A cantilevered sheet piling design does not appear feasible and additional members or other retention systems may be necessary. The Contractor shall submit a temporary soil retention system design including plan details and calculations for review and acceptance by the Engineer.

STAGE CONSTRUCTION AND MISCELLANEOUS DETAILS
F.A.P. ROUTE 310 - SECTION 81B-1
MORGAN COUNTY
STATION 140+34.43
STRUCTURE NO. 069-0504

DESIGNED	A.B.G.
CHECKED	W.A.B.
DRAWN	ØMG Frank Lowry
CHECKED	A.B.G. & W.A.B.

September 30, 2005
EXAMINED *Thomas J. Damagala*
ENGINEER OF BRIDGE DESIGN
PASSED *Ralph E. Anderson*
ENGINEER OF BRIDGES AND STRUCTURES

Notes: All stage construction cross sections Looking South. Hatched areas indicate Removal of Existing Structures. See Roadway Plans for quantities of Temporary Concrete Barrier.