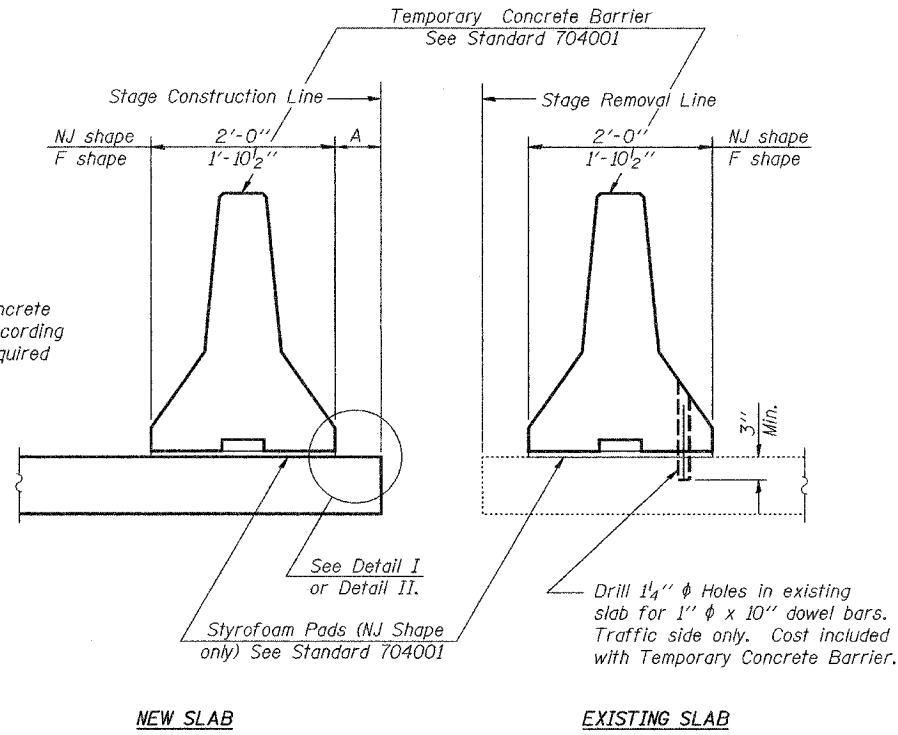


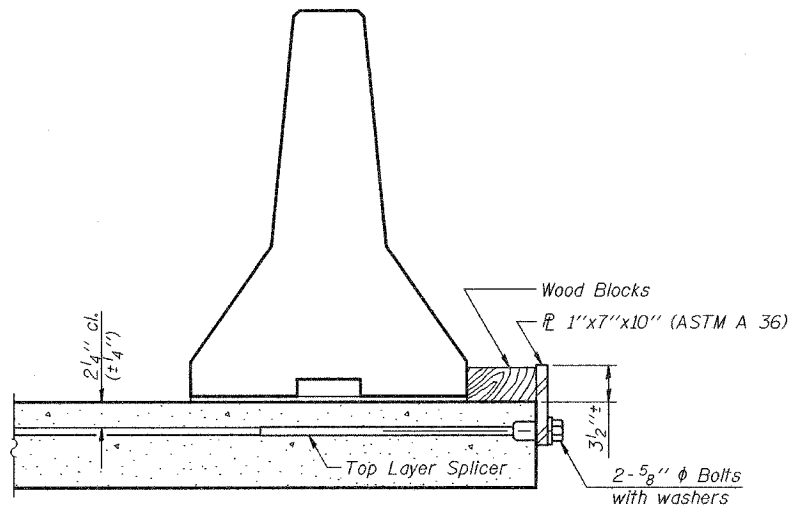
STATE OF ILLINOIS  
DEPARTMENT OF TRANSPORTATION

|                       |          |                  |       |           |             |
|-----------------------|----------|------------------|-------|-----------|-------------|
| ROUTE NO.             | SECTION  | COUNTY           | ISITS | SHEET NO. | SHEET NO. 3 |
| F.A.P. 310            | 81B-1    | MORGAN           | 114   | 54        | 16 SHEETS   |
| FED. ROAD DIST. NO. 7 | ILLINOIS | FED. AID PROJECT |       |           |             |

Contract #72528

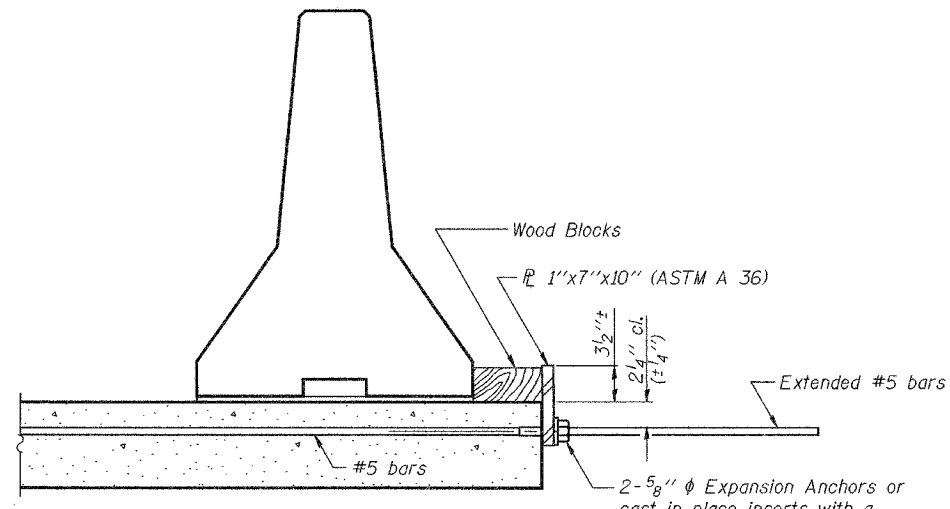


SECTION THRU SLAB



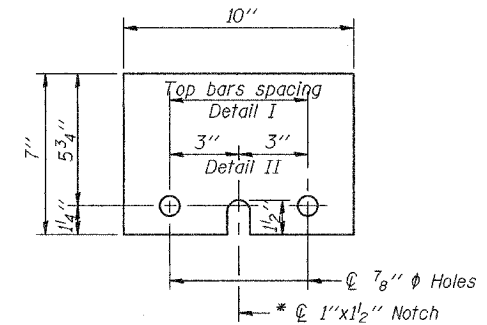
DETAIL I

The 1" x 7" x 10" Plate shall not be removed until Stage II Construction forms and reinforcement bars are in place.



DETAIL II

The 1" x 7" x 10" Plate shall not be removed until Stage II Construction forms and all reinforcement bars are in place and the concrete is ready to be placed.



1" x 7" x 10"

\* Required only with Detail II

NOTES

- Detail I - With Bar Splicer or Couplers:  
Connect one (1) 1" x 7" x 10" steel  $\bar{L}$  to the top layer of couplers with 2-5/8"  $\phi$  bolts screwed to coupler at approximate  $\bar{C}$  of each barrier panel.
- Detail II - With Extended Reinforcement Bars:  
Connect one (1) 1" x 7" x 10" steel  $\bar{L}$  to the concrete slab with 2-5/8"  $\phi$  Expansion Anchors or cast in place inserts spaced between the top layer of reinforcement at approximate  $\bar{C}$  of each barrier panel.
- Cost of anchorage is included with Temporary Concrete Barrier.

|          |                 |
|----------|-----------------|
| DESIGNED | A.B.G           |
| CHECKED  | W.A.B.          |
| DRAWN    | BMC Frank Lowry |
| CHECKED  | A.B.G & W.A.B.  |

September 30, 2005

EXAMINED *Thomas J. Domagala*  
ENGINEER OF BRIDGE DESIGN

PASSED *Ralph E. Anderson*  
ENGINEER OF BRIDGES AND STRUCTURES

R-27

10-22-04

TEMPORARY CONCRETE BARRIER  
FOR STAGE CONSTRUCTION  
F.A.P. ROUTE 310 - SECTION 81B-1  
MORGAN COUNTY  
STATION 140+34.43  
STRUCTURE NO. 069-0504