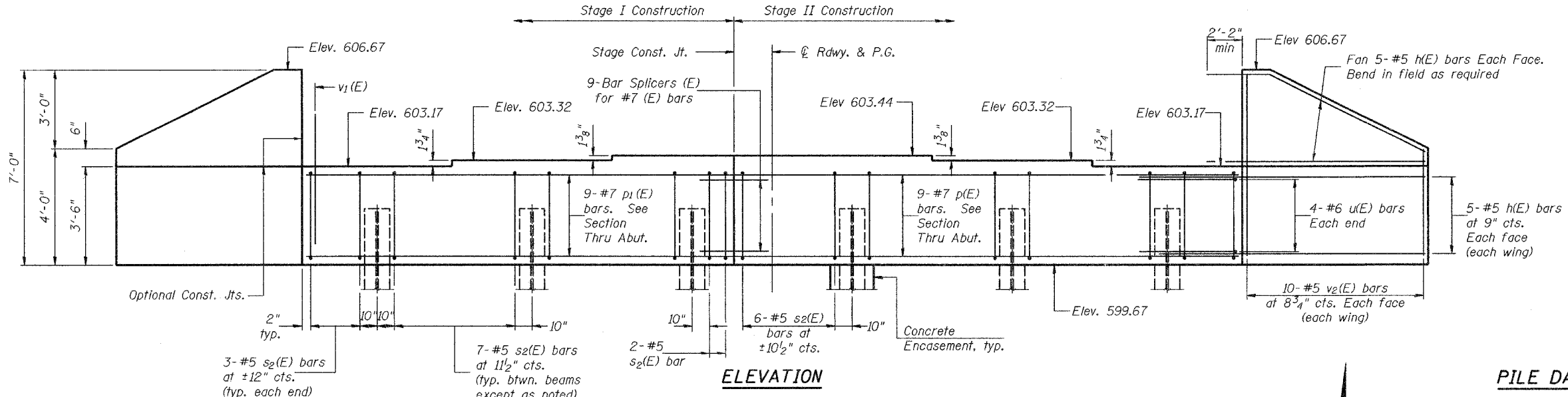


Notes: Pour steps monolithically with cap.  
Reinforcement bars designated (E) shall be epoxy coated.  
See sheet 15 of 16 for Bar Splicer details.

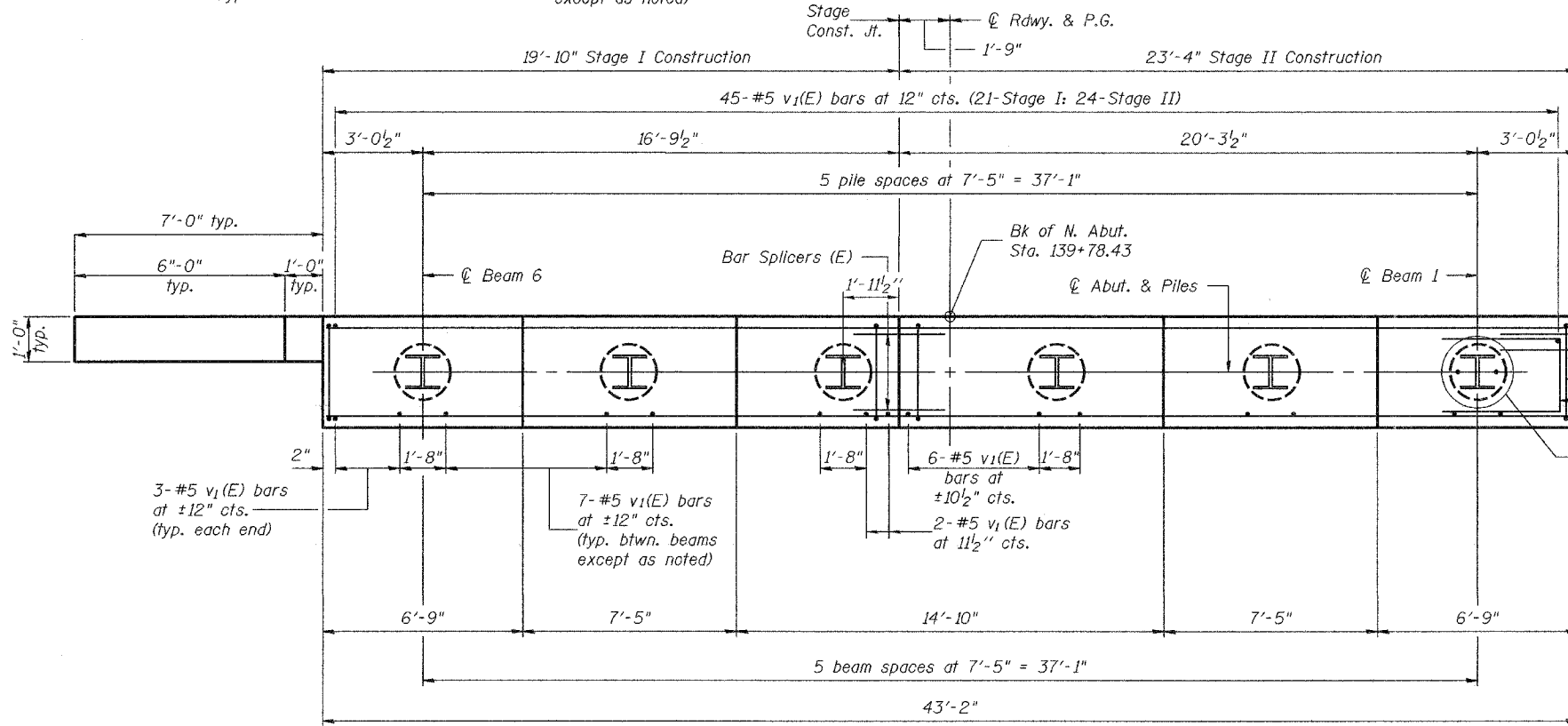
STATE OF ILLINOIS  
DEPARTMENT OF TRANSPORTATION

ROUTE NO.	SECTION	COUNTY	TOTAL SHEETS	SHEET NO.	SHEET NO. 12 16 SHEETS
F.A.P. 310	81B-1	MORGAN	114	63	
FED. ROAD DIST. NO. 7	ILLINOIS	FED. AID PROJECT-			

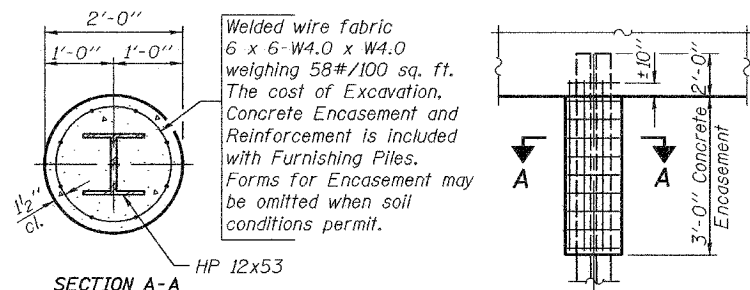
Contract #72528



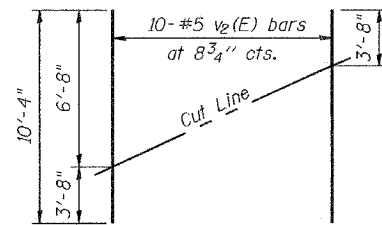
ELEVATION



PLAN

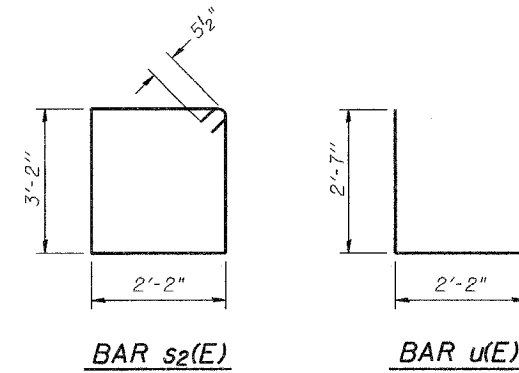


PILE ENCASEMENT DETAIL



FIELD CUTTING DIAGRAM

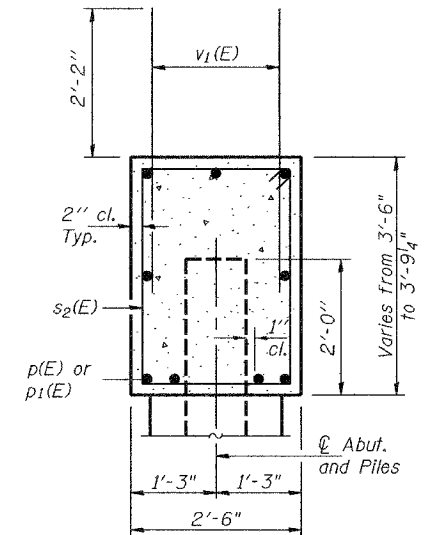
Order v2(E) full length. Cut as shown and use remainder of bars in opposite face.



DETAIL "A"

PILE DATA

Type: HP12x53  
Capacity: Driven to Refusal  
Est. Length: 31'  
No. Required: 6



SEC. THRU ABUT.

BILL OF MATERIAL

Bar	No.	Size	Length	Shape
h(E)	40	#5	11'-7"	
p(E)	9	#7	23'-0"	
p1(E)	9	#7	19'-6"	
s2(E)	42	#5	11'-7"	□
u(E)	8	#6	7'-4"	□
v1(E)	87	#5	4'-4"	
v2(E)	20	#5	10'-4"	
Concrete Structures		Cu. Yd.	17.6	
Reinforcement Bars, Epoxy Coated		Pound	2470	
Structure Excavation		Cu. Yd.	45.6	
Furnishing Steel Piles HP12 x 53		Lin. Ft.	186	
Driving Steel Piles		Lin. Ft.	186	

DESIGNED	A.B.G.
CHECKED	W.A.B.
DRAWN	EMC Frank Lowry
CHECKED	A.B.G. & W.A.B.

September 30, 2005  
EXAMINED *Thomas J. Demagala*  
PASSED *Ralph E. Anderson*  
ENGINEER OF BRIDGE DESIGN  
ENGINEER OF BRIDGES AND STRUCTURES

NORTH ABUTMENT  
F.A.P. ROUTE 310 - SECTION 81B-1  
MORGAN COUNTY  
STATION 140+34.43  
STRUCTURE NO. 069-0504