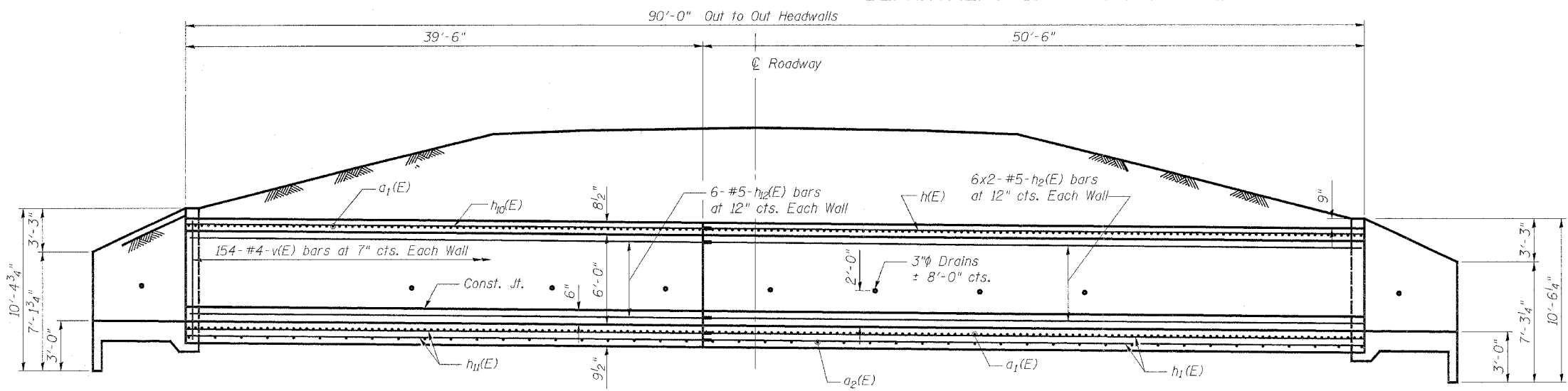


STATE OF ILLINOIS  
DEPARTMENT OF TRANSPORTATION

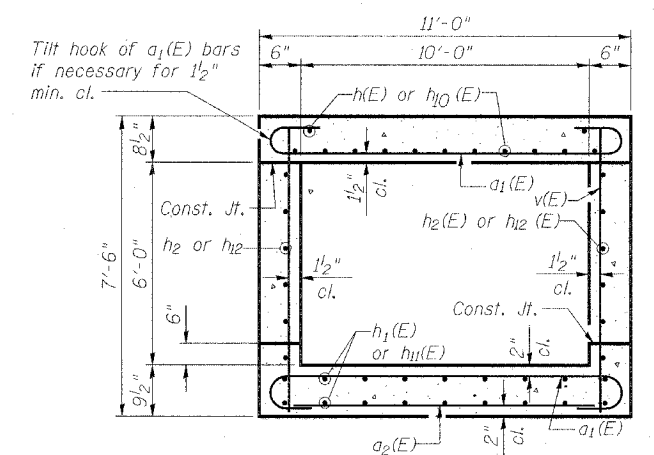
ROUTE NO.	SECTION	COUNTY	TOTAL SHEETS	SHEET NO.
IL 100	117B-4	SCOTT	39	22
FED. ROAD DIST. NO. 6		ILLINOIS	FED. AID PROJECT - ROUTE 562	

SHEET NO. 2  
6 SHEETS

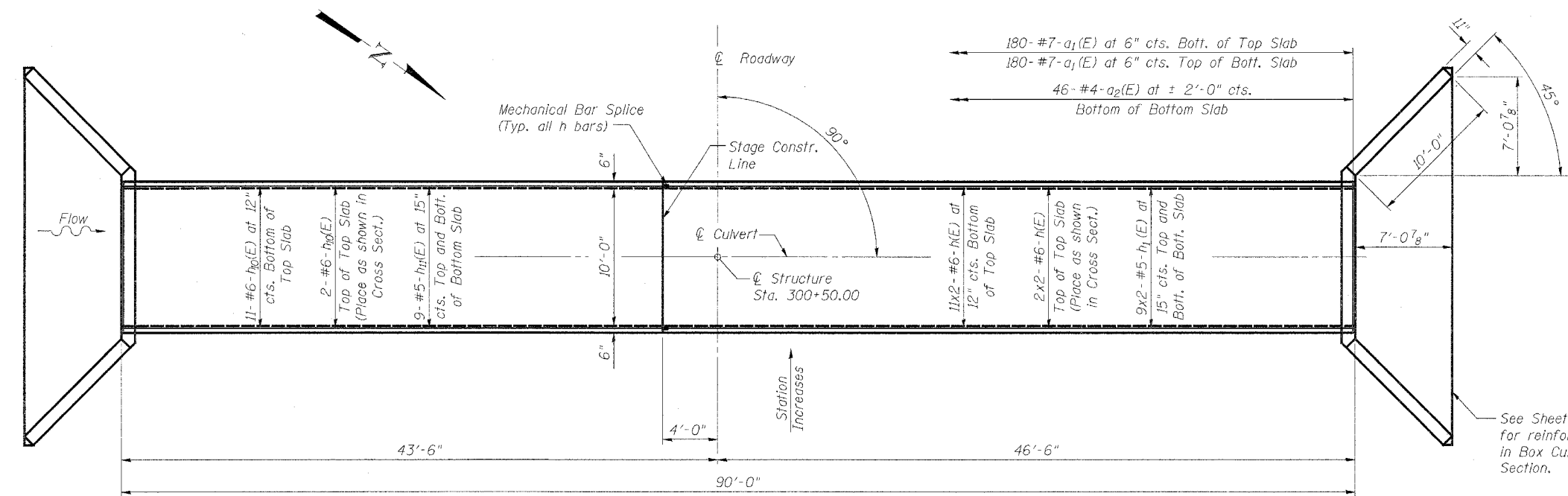


**LONGITUDINAL SECTION**

(Dimensions shown are at right angles to  $\text{CL}$  roadway)



**SECTION THRU BARREL**



**PLAN**

**BILL OF MATERIAL**

Bar	No.	Size	Length	Shape
a1(E)	360	#7	12'-4"	U
a2(E)	46	#4	10'-3"	—
h(E)	26	#6	26'-5"	—
h1(E)	36	#5	26'-3"	—
h2(E)	24	#5	26'-3"	—
h10(E)	13	#6	39'-3"	—
h11(E)	18	#5	39'-3"	—
h12(E)	12	#5	39'-3"	—
v(E)	308	#4	7'-2"	—
Reinforcement Bars Epoxy Coated		Pound	15,540	
Concrete Box Culverts		Cu. Yd.	75.0	
Bar Splicers		Each	43	

**Min. Bar Laps**

#5 Bar = 2'-2"  
#6 Bar = 2'-7"

**DESIGN STRESSES**

$f_y = 60,000 \text{ psi}$   
 $f'_c = 3,500 \text{ psi}$

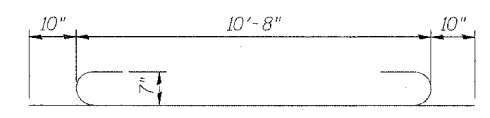
**LOADING HS 20-44**

**BARREL REINFORCING DETAILS**  
**ILLINOIS ROUTE 100 OVER**  
**WALNUT CREEK**  
**F.A.P. ROUTE 562 - SECTION 117(B-4)**  
**SCOTT COUNTY**  
**STATION 300+50.00**  
**STRUCTURE NO. 086-7500**

**NOTES**

Removal and replacement of weak soils with Rockfill - Foundation may be required beneath the culvert. The Engineer will determine the required depth of improvement following excavation to plan grade.  
Reinforcement Bars shall conform to the requirements of AASHTO M-31 M-42 or M-53, Grade 60.  
Bars indicated thus 12x4-#5 etc. indicates 12 lines of bars with 4 lengths per line.  
Reinforcement bars designated (E) shall be epoxy coated and shall conform to the requirements of AASHTO M-284.  
All construction joints shall be bonded.

DESIGNED	S.C. Crowley
CHECKED	K.L. Hayes
DRAWN	S.C. Crowley
CHECKED	K.L. Hayes/ K.P. Heffern



BAR a1(E)

Plot Date: 4/29/2005  
Plot Path: C:\Users\scrowley\Documents\117B-4\117B-4.dwg  
Plot Scale: 1:1  
Plot Table: 1001.tbl  
Filename: s:\04\000\117B-4\117B-4.dwg