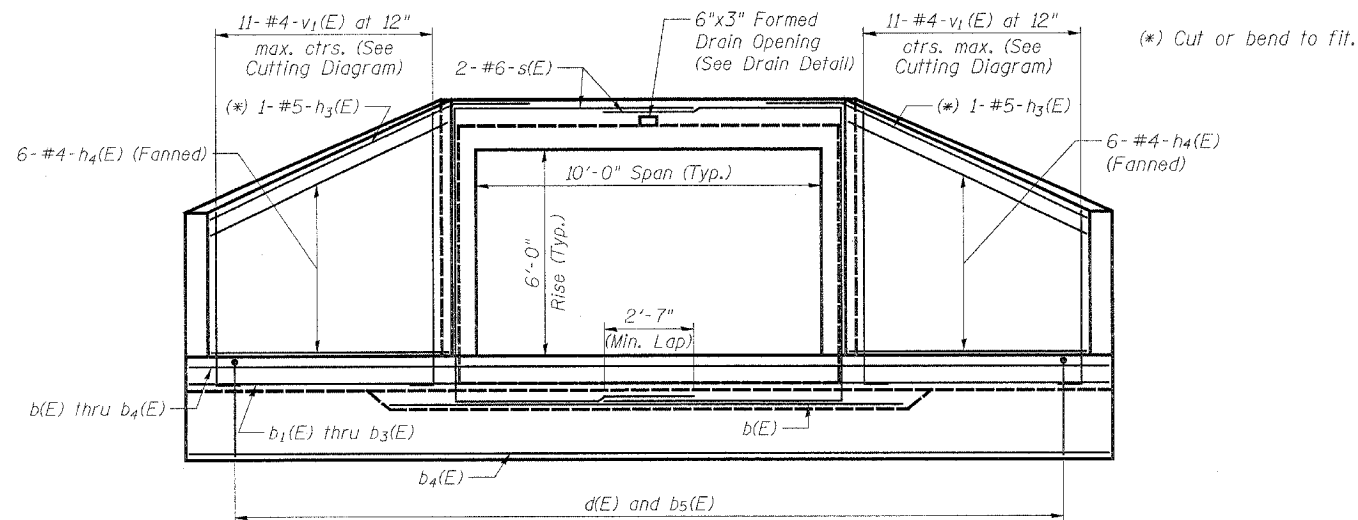
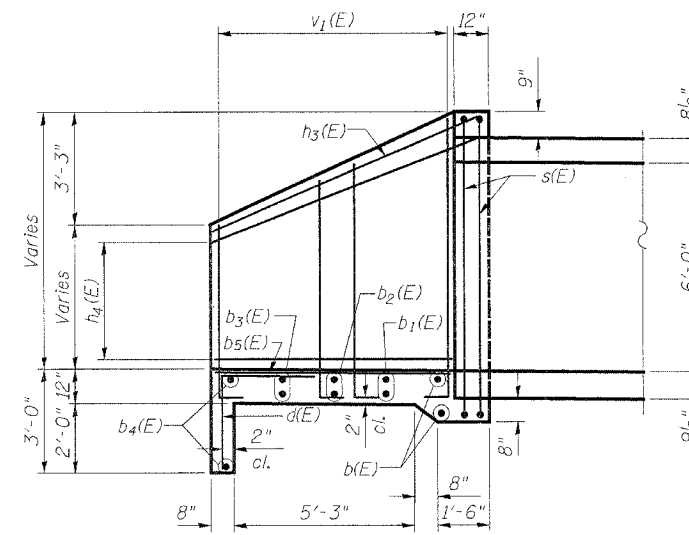


STATE OF ILLINOIS  
DEPARTMENT OF TRANSPORTATION

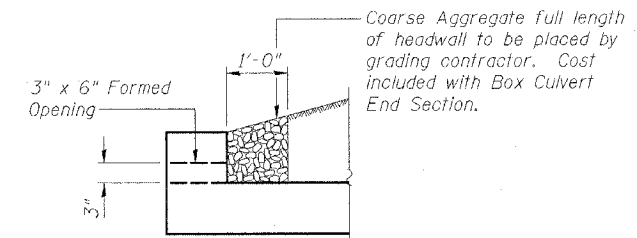
ROUTE NO.	SECTION	COUNTY	TOTAL SHEETS	SHEET NO.	SHEET NO. 3
IL 100	117B-4	SCOTT	39	23	6 SHEETS
FED. ROAD DIST. NO. 6	ILLINOIS	FED. AID PROJECT			



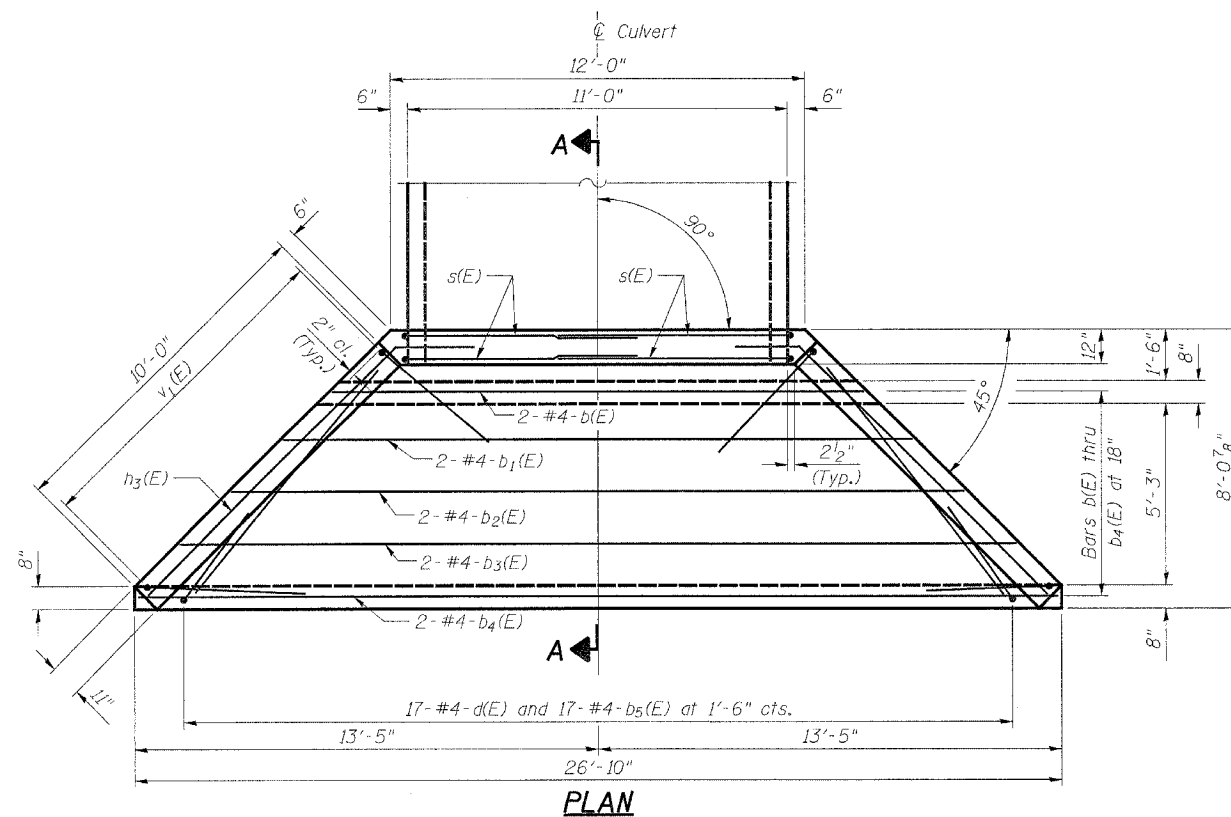
END ELEVATION



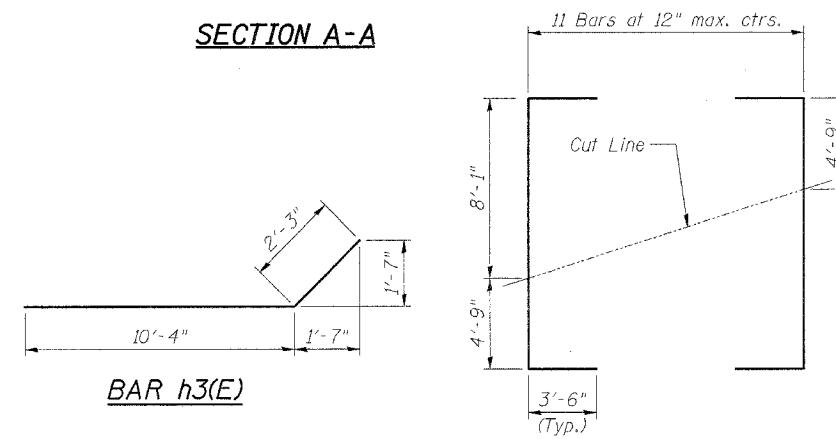
SECTION A-A



DRAIN DETAIL



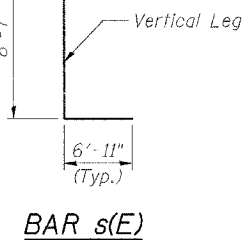
PLAN



BAR h3(E)

BAR d(E)

CUTTING DIAGRAM  
BAR v1(E)



BAR s(E)

BILL OF MATERIAL

Bar	No.	Size	Length	Shape
b1(E)	2	#4	15'-2"	—
b2(E)	2	#4	18'-2"	—
b3(E)	2	#4	21'-2"	—
b4(E)	2	#4	24'-2"	—
b5(E)	17	#4	6'-10"	—
d(E)	17	#4	5'-4"	└
h3(E)	2	#5	12'-7"	└
h4(E)	12	#4	10'-3"	—
v1(E)	11	#4	19'-10"	└
s1(E)	4	#6	22'-5"	└
CLASS SI CONCRETE			Cu. Yd.	11.8
REINFORCEMENT BARS EPOXY COATED			Pound	670

NOTES:  
Bill of Material for one (1) End Section only.  
Two (2) are required.

Concrete and reinforcement quantities are for information only, pay item is "Box Culvert End Section (Each)".

BOX CULVERT END SECTION  
REINFORCING DETAILS  
ILLINOIS ROUTE 100 OVER  
WALNUT CREEK  
F.A.P. ROUTE 562 - SECTION 117(B-4)  
SCOTT COUNTY  
STATION 300+50.00  
STRUCTURE NO. 086-7500

NOTES:  
Class SI concrete shall be used throughout.  
Exposed edges shall be beveled 3/4".  
Reinforcement bars shall conform to the requirements of AASHTO M-31, M-42, M-53, Grade 60.  
Reinforcement bars designated (E) shall be epoxy coated and shall conform to the requirements of AASHTO M-284.  
Bar dimensions are out to out.  
Precast substitution for the End Section will not be allowed.

DESIGNED	S.C. Crowley
CHECKED	K.L. Hayes
DRAWN	S.C. Crowley
CHECKED	K.P. Heffern