

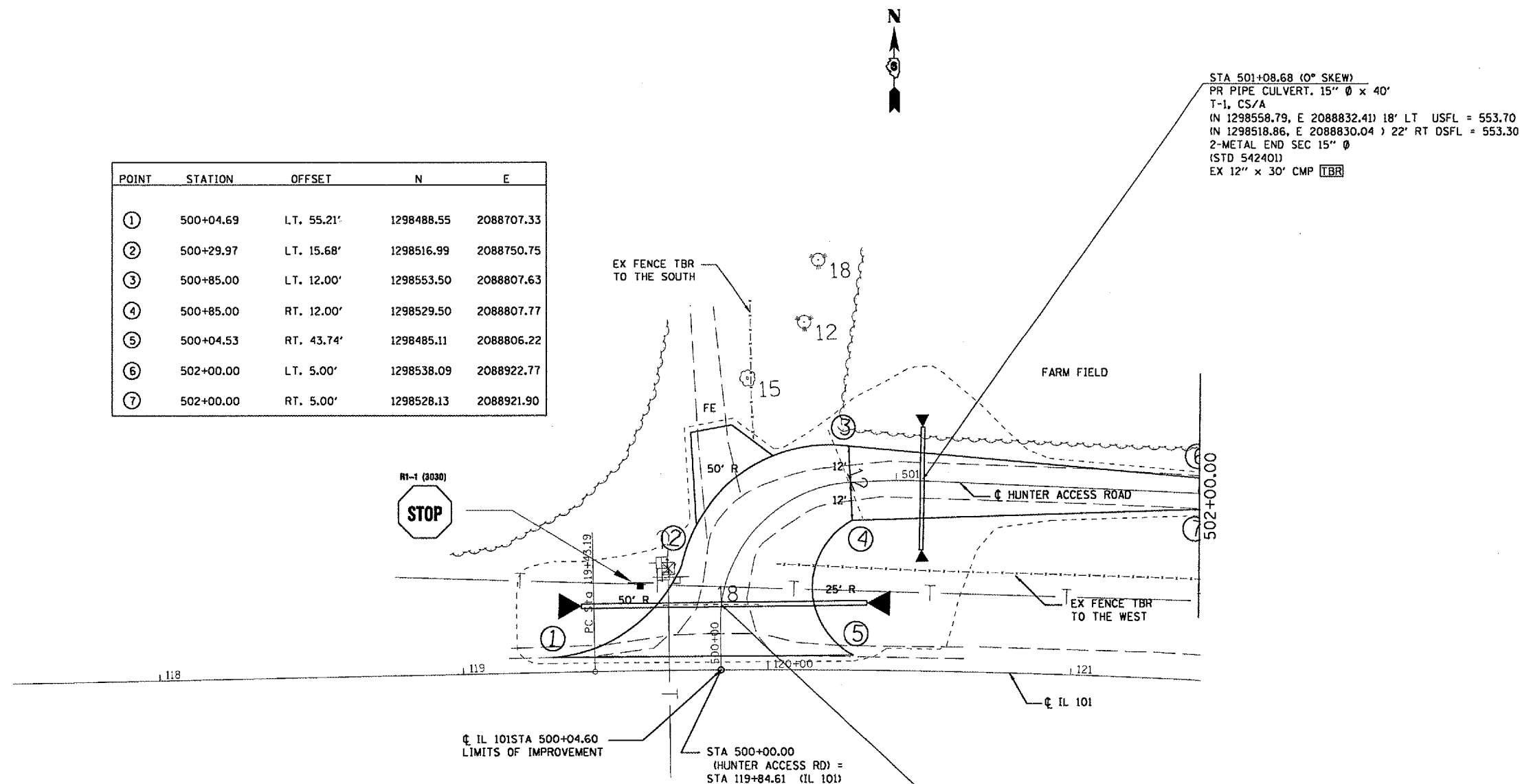
F.A. RTE.	SECTION	COUNTY	TOTAL SHEETS	SHEET NO.
*	**	SCHUYLER	139	36

STA. \_\_\_\_\_ TO STA. \_\_\_\_\_

FED. ROAD DIST. NO. ILLINOIS FED. AID PROJECT

\* OTHER ROUTE 1 (WEINBERG KING STATE PARK)  
 \*\* WEIN KING ST PK INT RDS 2

POINT	STATION	OFFSET	N	E
①	500+04.69	LT. 55.21'	1298488.55	2088707.33
②	500+29.97	LT. 15.68'	1298516.99	2088750.75
③	500+85.00	LT. 12.00'	1298553.50	2088807.63
④	500+85.00	RT. 12.00'	1298529.50	2088807.77
⑤	500+04.53	RT. 43.74'	1298485.11	2088806.22
⑥	502+00.00	LT. 5.00'	1298538.09	2088922.77
⑦	502+00.00	RT. 5.00'	1298528.13	2088921.90



STA 501+08.68 (0° SKEW)  
 PR PIPE CULVERT. 15" Ø x 40'  
 T-1, CS/A  
 (N 1298558.79, E 2088832.41) 18' LT USFL = 553.70  
 (N 1298518.86, E 2088830.04) 22' RT DSFL = 553.30  
 2-METAL END SEC 15" Ø  
 (STD 542401)  
 EX 12" x 30' CMP (TBR)

STA 500+22.00 (0° SKEW)  
 PR PIPE CULVERT. 18" Ø x 98'  
 T-1, CS/A  
 (N 1298504.89, E 2088717.38) 46' LT USFL = 552.14  
 (N 1298502.04, E 2088811.36) 48' RT DSFL = 553.12  
 2-METAL END SEC 18" Ø  
 (STD 542301)  
 EX 18" x 60' CMP (TBR)

REVISIONS	
NAME	DATE

ILLINOIS DEPARTMENT OF TRANSPORTATION

**PLAN VIEW**

WEINBERG KING STATE PARK

SCALE: VERT. \_\_\_\_\_  
 HORIZ. \_\_\_\_\_

DATE \_\_\_\_\_

DRAWN BY BDK  
 CHECKED BY ZSH

Rev. 11-1-05

PLOT DATE = 10/26/2005  
 FILE NAME = c:\projects\72996\plan\72996plan.dwg  
 USER NAME = kerrid