

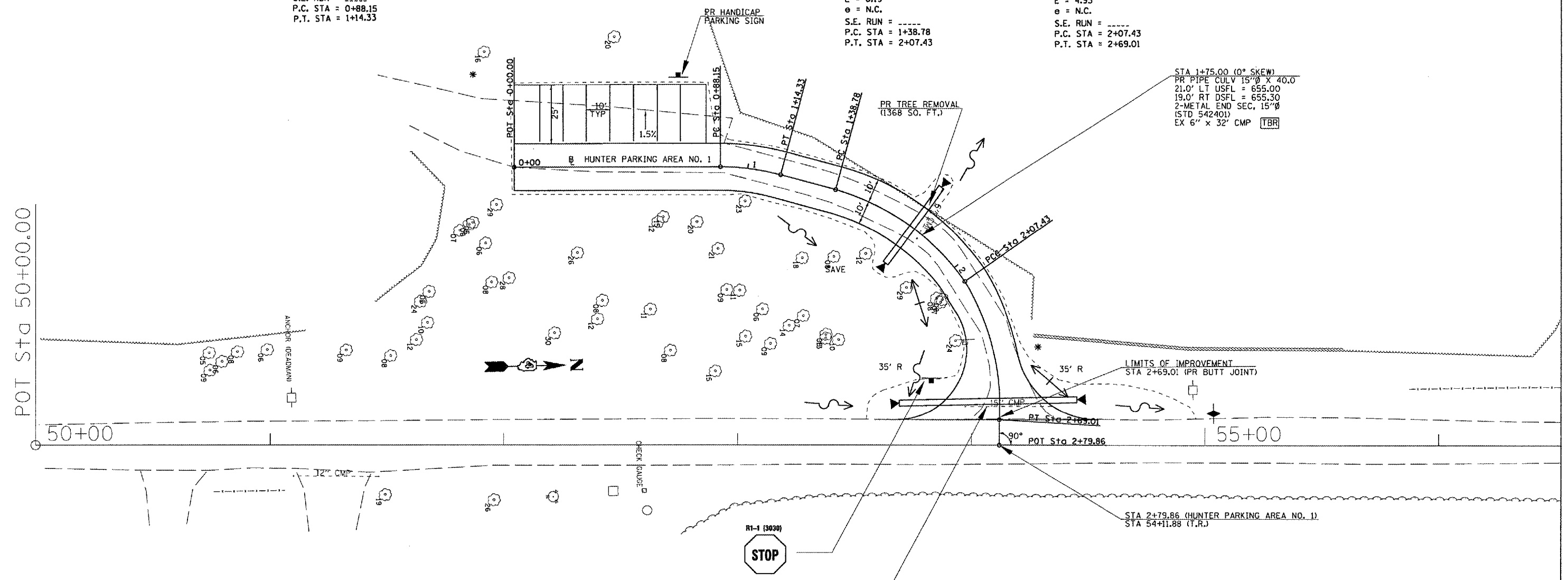
F.A. RTE.	SECTION	COUNTY	TOTAL SHEETS	SHEET NO.
*	**	SCHUYLER	139	63
STA.		TO STA.		
FED. ROAD DIST. NO.	ILLINOIS	FED. AID PROJECT		

- WEINBERG KING STATE PARK
- ** WEINBERG KING ST. PK. INTERNAL ROADS #2

PROP. CURVE PHUNTER-1
 PI STA. = 1+01.31
 $\Delta = 14^\circ 59' 57''$ (RT)
 D = 57' 17" 45"
 R = 100.00'
 T = 13.16'
 L = 26.18'
 E = 0.86'
 e = N.C.
 S.E. RUN = -----
 P.C. STA = 0+88.15
 P.T. STA = 1+14.33

PROP. CURVE PHUNTER-2
 PI STA. = 1+74.52
 $\Delta = 39^\circ 19' 52''$ (RT)
 D = 57' 17" 45"
 R = 100.00'
 T = 35.74'
 L = 68.65'
 E = 6.19'
 e = N.C.
 S.E. RUN = -----
 P.C. STA = 1+38.78
 P.T. STA = 2+07.43

PROP. CURVE PHUNTER-3
 PI STA. = 2+39.23
 $\Delta = 35^\circ 16' 58''$ (RT)
 D = 57' 17" 45"
 R = 100.00'
 T = 31.80'
 L = 61.58'
 E = 4.93'
 e = N.C.
 S.E. RUN = -----
 P.C. STA = 2+07.43
 P.T. STA = 2+69.01



STA 1+75.00 (0° SKEW)
 PR PIPE CULV 15"Ø X 40.0'
 21.0' LT USFL = 655.00
 19.0' RT DSFL = 655.30
 2-METAL END SEC, 15"Ø
 (STD 542401)
 EX 6" x 32' CMP TBR

STA 2+61.00 (0° SKEW)
 PR PIPE CULV 15"Ø X 76.0'
 CS/A, TYPE 1
 33.0' LT USFL = 654.60
 43.0' RT DSFL = 654.80
 2-METAL END SEC, 15"Ø
 (STD 542401)
 EX 15" x 40' CMP TBR

STA 2+79.86 (HUNTER PARKING AREA NO. 1)
 STA 54+11.88 (T.R.)

REVISIONS	
NAME	DATE

ILLINOIS DEPARTMENT OF TRANSPORTATION

SWPPP

WEINBERG KING STATE PARK

SCALE: VERT. = NONE
 HORIZ. = NONE

DATE: _____

DRAWN BY: BDK
 CHECKED BY: JCN

PLOT DATE = 8/24/2005
 FILE NAME = \\ed50902\contract 2\dwg\hnt\hntparking\swppp.dgn
 PLOT SCALE = 43.3753" / IN.
 REFERENCE = REF#