

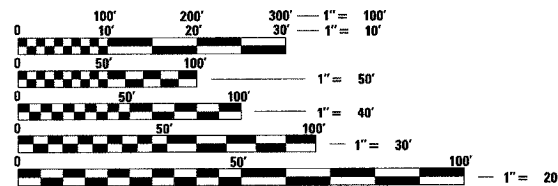
F.A.P. RTE.	SECTION	COUNTY	TOTAL SHEETS	SHEET NO.
609	76-3BR	ST. CLAIR	47	1

INDEX OF SHEETS

SHEET NO.	DESCRIPTION
1	COVER SHEET, INDEX OF SHEETS AND STANDARDS
2 - 3	GENERAL NOTES
4 - 5	SUMMARY OF QUANTITIES
6	TYPICAL SECTIONS
7 - 9	SCHEDULE OF QUANTITIES
10	HORIZONTAL AND VERTICAL CONTROL
11	REMOVAL AND ADJUSTMENT PLAN
12	PLAN AND PROFILE SHEETS
13 - 14	STAGING PLANS
15 - 17	STORM WATER POLLUTION PREVENTION PLAN EROSION CONTROL PLAN
18	PAVEMENT MARKING PLAN
19 - 20	PLAT OF HIGHWAYS
21 - 36	BRIDGE PLANS
37	WIDE LOAD SIGN DETAIL
38	ENTRANCE DETAILS
39	BITUMINOUS BUTT JOINT DETAILS
40 - 46	CROSS SECTIONS

STATE STANDARDS
 ** 37A - **DETAIL STAGING**
 * 36A - **SLIP-FORMING DETAIL**

000001-04	STANDARD SYMBOLS, ABBREVIATIONS AND PATTERNS
001001	AREAS OF REINFORCEMENT REBARS
001006	DECIMAL OF AN INCH AND OF A FOOT
280001-02	TEMPORARY EROSION CONTROL SYSTEMS
420401-05	BRIDGE APPROACH PAVEMENT
482001	BITUMINOUS SHOULDER ADJACENT TO FLEXIBLE PAVEMENT
503001-02	CONCRETE PARAPET SLIP-FORMING OPTION
515001-02	NAME PLATE FOR BRIDGES
542401	METAL END SECTION FOR PIPE CULVERTS
630001-05	STEEL PLATE BEAM GUARDRAIL
630301-03	SHOULDER WIDENING FOR TYPE (SPECIAL) GUARDRAIL TERMINALS
631031-05	TRAFFIC BARRIER TERMINAL, TYPE 6
635001	DELINEATORS
635006-02	REFLECTOR AND TERMINAL MARKER PLACEMENT
635011-01	REFLECTOR MARKER AND MOUNTING DETAILS
701006-02	OFF-RD OPERATIONS 2L, 2W 4.5 m (15') TO PAVEMENT EDGE FOR SPEEDS ≥ 45 MPH
701201-02	LANE CLOSURE, 2L, 2W, DAY ONLY ON-RD TO 600 mm (24") OFF-RD FOR SPEEDS > 45 MPH
701301-02	LANE CLOSURE 2L, 2W SHORT TERM OPERATIONS
701306-01	LANE CLOSURE 2L, 2W SLOW MOVING OPERATIONS-DAY ONLY FOR SPEEDS ≥ 45 MPH
701311-02	LANE CLOSURE 2L, 2W MOVING OPERATIONS-DAY ONLY
701321-08	LANE CLOSURE 2L, 2W BRIDGE REPAIR WITH BARRIER
701326-02	LANE CLOSURE 2L, 2W PAVEMENT WIDENING FOR SPEEDS ≥ 45 MPH
702001-05	TRAFFIC CONTROL DEVICES
704001-02	TEMPORARY CONCRETE BARRIER
720001	SIGN PANEL MOUNTING DETAILS
720006	SIGN PANEL ERECTION DETAILS
780001-01	TYPICAL PAVEMENT MARKINGS
781001-02	TYPICAL APPLICATIONS RAISED REFLECTIVE PAVEMENT MARKERS



FULL SIZE PLANS HAVE BEEN PREPARED USING STANDARD ENGINEERING SCALES. REDUCED SIZED PLANS WILL NOT CONFORM TO STANDARD SCALES. IN MAKING MEASUREMENTS ON REDUCED PLANS, THE ABOVE SCALES MAY BE USED.

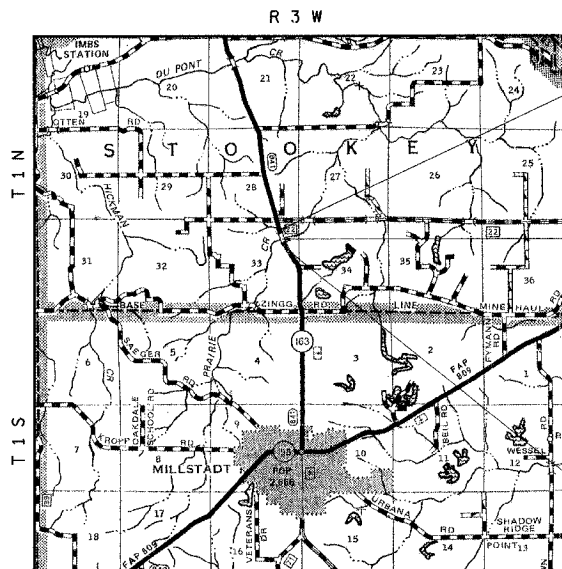
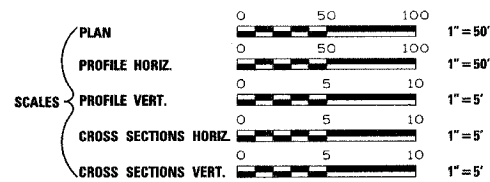
J.U.L.I.E.
 JOINT UTILITY LOCATION INFORMATION FOR EXCAVATION
 1-800-892-0123

CONTRACT NO. 76268

STATE OF ILLINOIS
 DEPARTMENT OF TRANSPORTATION
 DIVISION OF HIGHWAYS

**PROPOSED
 HIGHWAY PLANS**

FAP ROUTE 609 (IL RTE 163)
 SECTION 76-3BR
 STRUCTURE REPLACEMENT
 ST. CLAIR COUNTY
 PROJECT: ACBRF-0609(003)
 C-98-101-05

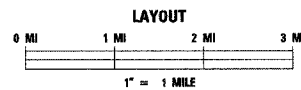


END PROJECT
 STA. 141+90.00

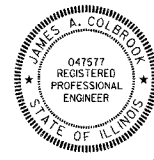
SEC. 76-3BR
 38° 29' 46.4" N LAT
 90° 05' 42.3" W LONG
 CONSISTS OF REMOVING AND REPLACING THE EXISTING STRUCTURE NO. 082-0134 AT STA. 138+66.06 WITH A SINGLE SPAN PRECAST, PRESTRESSED CONCRETE I-BEAM STRUCTURE WITH CONCRETE SPILL-THRU ABUTMENTS WITH A 40' CLEAR ROADWAY WIDTH, AND RELATED ROADWAY WORK.
 PROJ. SN 082-0305

BEGIN PROJECT
 STA. 135+60.00

GROSS LENGTH = 630.00 FEET = 0.119 MILES
 NET LENGTH = 630.00 FEET = 0.119 MILES



LATITUDE 38° 29' 46.4" N
 LONGITUDE 90° 05' 42.3" W



James A. Colvard
 SIGNED DATE 07-22-05
 EXPIRES: 11/30/05

Rev. 11-1-05



LOCATION OF SECTION INDICATED THUS: —

STATE OF ILLINOIS
 DEPARTMENT OF TRANSPORTATION
 DIVISION OF HIGHWAYS

SUBMITTED Aug 31 2005
Mary C. Krami
 DEPUTY DIRECTOR OF HIGHWAYS
 REGION FIVE ENGINEER

October 14, 2005
Mike Hine
 ENGINEER OF DESIGN AND ENVIRONMENT

October 14, 2005
Eric E. Harshbarger
 DEPUTY DIRECTOR, DIVISION OF HIGHWAYS

**PRINTED BY THE AUTHORITY
 OF THE STATE OF ILLINOIS**

REVISION	DATE	BY

PLANS PREPARED BY:
 GREENE & BRADFORD, INC.
 OF SPRINGFIELD

COMPUTER FILE NO. COV163BR
 PROJECT: 02076
 7/22/05-MDS

PROJECT ENGINEER: PATTI LEBEAU (618) 346-3179
 SQUAD CONTACT: ARTHUR MUEHLFELD (618) 346-3209