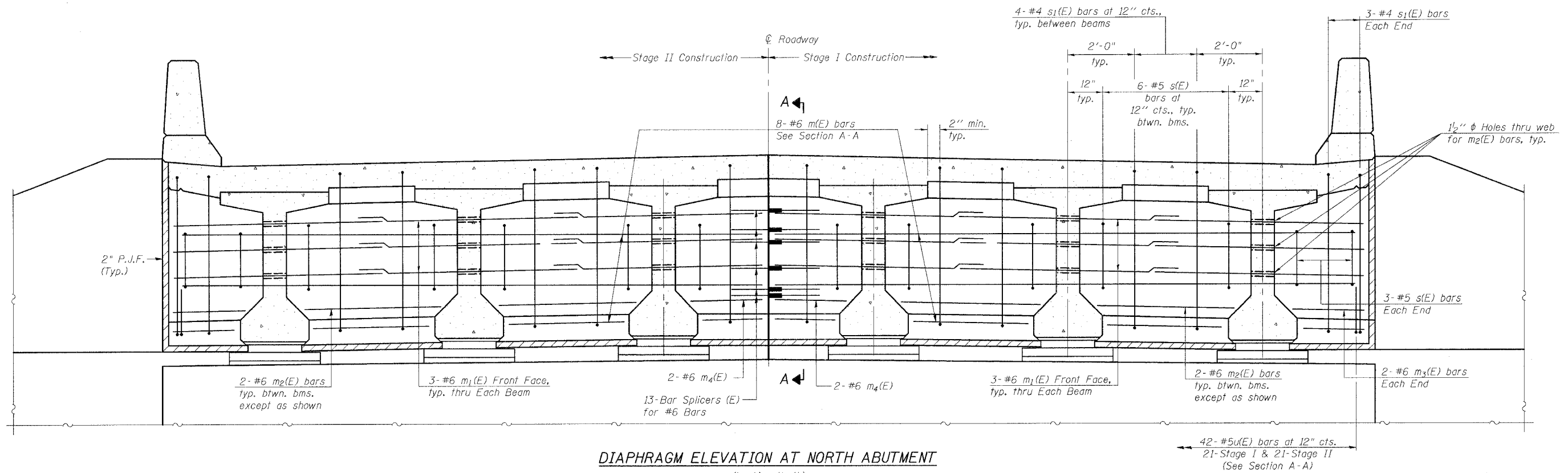


STATE OF ILLINOIS
DEPARTMENT OF TRANSPORTATION

ROUTE NO.	SECTION	COUNTY	SHEETS	SHEET NO.
FAP 609	*	ST. CLAIR	46	27
FED. ROAD DIST. NO.	ILLINOIS	FED. AID PROJECT	76268	
* 76-3BR				

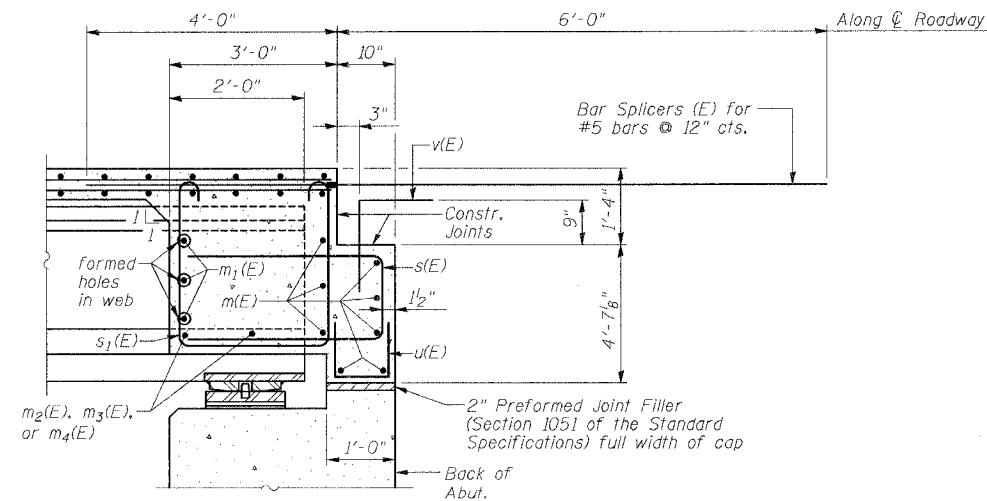


DIAPHRAGM ELEVATION AT NORTH ABUTMENT

(Looking North)
(S. Abut. similar by 180° rotation)

MIN. BAR LAP

#6 bar = 2'-7"



SECTION A-A

Notes:
Reinforcement bars in diaphragm are billed with superstructure on sheet 6 of 15.
Concrete in diaphragm is included with Concrete Superstructure on sheet 6 of 15.
For details of bars s(E) and s1(E) see sheet 6 of 15.

ILLINOIS DEPARTMENT OF TRANSPORTATION

DIAPHRAGM DETAILS

FAP RTE 609 (IL 163) PRAIRIE DUPONT CR.
SECTION 76-3BR
ST. CLAIR COUNTY
STA. 138+66.06
S.N. 082-0305

REVISIONS	
NAME	DATE

SCALE: VERT. DRAWN BY: LANDREY
HORIZ. DESIGNED BY: WATKINS
DATE: 7/26/04 CHECKED BY: SANFORD

GREENE & BRADFORD, INC.
OF SPRINGFIELD
COMPUTER FILE NO.
SN0820305.DDT
PROJECT 02076
4/28/05-MML

FILE NAME = J:\V02076\dr\awings\sn082-0305\sn0820305_ddt.dgn
PLOT SCALE = 1/8"=1'-0"
PLOT TIME = 10:55:49 AM
OPERATOR = michellel