



F.A.S. RTE.	SECTION	COUNTY	TOTAL SHEETS	SHEET NO.
754	4RS-2, 4BR	CALHOUN	87	4

SUMMARY OF QUANTITIES			TOTAL QUANTITIES	RURAL ROADWAY 100% STATE 1000	RURAL BRIDGE 100% STATE X071-2A	RURAL SIDEWALK 50% STATE 50% LOCAL SFTY - 1B	RURAL 100% STATE SFTY - 3N
CODE NO	ITEM	UNIT					
44000600	SIDEWALK REMOVAL	SQ FT	560	560			
44004250	PAVED SHOULDER REMOVAL	SQ YD	144	144			
50100100	REMOVAL OF EXISTING STRUCTURES	EACH	1		1		
50102700	MASONRY REMOVAL	CU YD	2		2		
50104400	CONCRETE HEADWALL REMOVAL	EACH	2	2			
50104600	CONCRETE RETAINING WALL REMOVAL	FOOT	98	98			
50105220	PIPE CULVERT REMOVAL	FOOT	257	257			
50200100	STRUCTURE EXCAVATION	CU YD	300		300		
50300100	FLOOR DRAINS	EACH	10		10		
50300225	CONCRETE STRUCTURES	CU YD	35.2		35.2		
50300255	CONCRETE SUPERSTRUCTURE	CU YD	140.2		140.2		
50300260	BRIDGE DECK GROOVING	SQ YD	431		431		
50300300	PROTECTIVE COAT	SQ YD	2256	1820	436		
50500105	FURNISHING AND ERECTING STRUCTURAL STEEL	L SUM	1		1		
50500505	STUD SHEAR CONNECTORS	EACH	2373		2373		
50800205	REINFORCEMENT BARS, EPOXY COATED	POUND	29400		29400		
50900105	ALUMINUM RAILING, TYPE L	FOOT	75		75		
51000105	PIPE HANDRAIL	FOOT	24	24			
51201600	FURNISHING STEEL PILES HP12X53	FOOT	510		510		
51202700	DRIVING STEEL PILES	FOOT	510		510		
51203600	TEST PILE STEEL HP12X53	EACH	1		1		
51204600	METAL SHOES	EACH	11		11		
51205200	TEMPORARY SHEET PILING	SQ FT	3050		3050		
51500100	NAME PLATES	EACH	1		1		
54213663	PRECAST REINFORCED CONCRETE FLARED END SECTIONS 18"	EACH	1	1			
54215547	METAL END SECTIONS 12"	EACH	4	4			
54248515	CONCRETE COLLAR	EACH	1	1			
542D0217	PIPE CULVERTS, CLASS D, TYPE 1 12"	FOOT	70	70			
550A0050	STORM SEWERS, CLASS A, TYPE 1 12"	FOOT	130	130			
550A0070	STORM SEWERS, CLASS A, TYPE 1 15"	FOOT	94	94			
550A0090	STORM SEWERS, CLASS A, TYPE 1 18"	FOOT	97	97			
60100945	PIPE DRAINS 12"	FOOT	47	47			
60235700	INLETS, TYPE A, TYPE 3 FRAME AND GRATE	EACH	3	3			
60236200	INLETS, TYPE A, TYPE 8 GRATE	EACH	2	2			

PLOT DATE = 9/19/2005  
 PLOT SCALE = 50/1000' / IN.  
 REFERENCE = #REF#

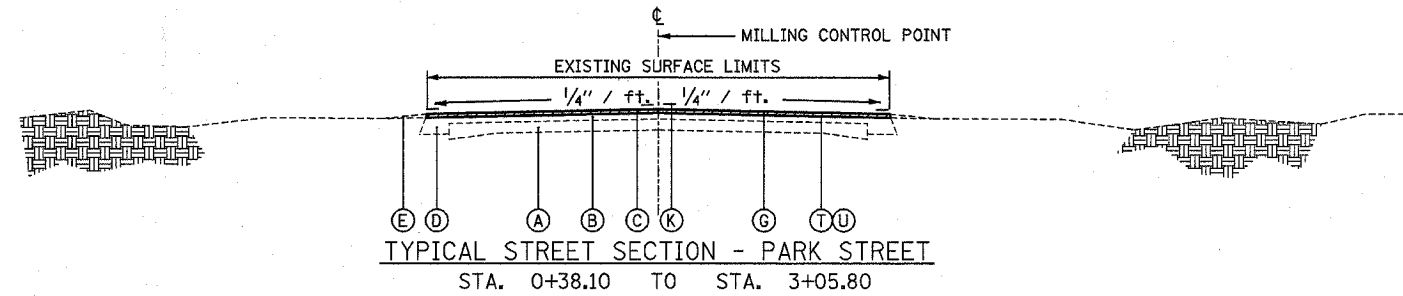
F.A.S. RTE.	SECTION	COUNTY	TOTAL SHEETS	SHEET NO.
754	4RS-2, 4BR	CALHOUN	87	5

# SUMMARY OF QUANTITIES

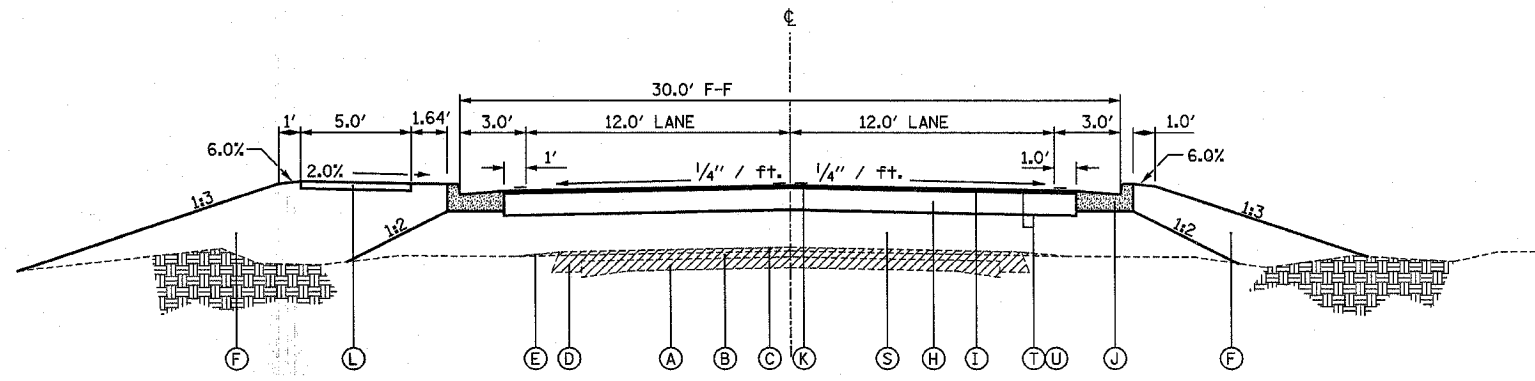
CODE NO	ITEM	UNIT	TOTAL QUANTITIES	RURAL ROADWAY 100% STATE 1000	RURAL BRIDGE 100% STATE X071-2A	RURAL SIDEWALK 50% STATE 50% LOCAL SFTY - 1B	RURAL 100% STATE SFTY - 3N
60240220	INLETS, TYPE B, TYPE 3 FRAME AND GRATE	EACH	3	3			
60500060	REMOVING INLETS	EACH	1	1			
60605000	COMBINATION CONCRETE CURB AND GUTTER, TYPE B-6.24	FOOT	2225	2225			
60900330	TYPE D INLET BOX, STANDARD 609001	EACH	2	2			
60900515	CONCRETE THRUST BLOCKS	EACH	2	2			
* 63000000	STEEL PLATE BEAM GUARD RAIL, TYPE A	FOOT	12.5	12.5			
* 63100045	TRAFFIC BARRIER TERMINAL, TYPE 2	EACH	1	1			
* 63100085	TRAFFIC BARRIER TERMINAL, TYPE 6	EACH	4	4			
* 63100167	TRAFFIC BARRIER TERMINAL TYPE 1, SPECIAL (TANGENT)	EACH	3	3			
63200310	GUARDRAIL REMOVAL	FOOT	139	139			
66300105	CALCIUM CHLORIDE APPLIED	TON	4	4			
* 66900200	NON-SPECIAL WASTE DISPOSAL	CU YD	170	170			
* 66900450	SPECIAL WASTE PLANS AND REPORT	L SUM	1	1			
* 66900530	SOIL DISPOSAL ANALYSIS	EACH	2	2			
* 66901000	BACKFILL PLUGS	CU YD	5	5			
67000400	ENGINEER'S FIELD OFFICE, TYPE A	CAL MO	18	18			
67100100	MOBILIZATION	L SUM	1	1			
70100405	TRAFFIC CONTROL AND PROTECTION, STANDARD 701321	EACH	1	1			
70100460	TRAFFIC CONTROL AND PROTECTION, STANDARD 701306	L SUM	1	1			
70100500	TRAFFIC CONTROL AND PROTECTION, STANDARD 701326	L SUM	1	1			
70101800	TRAFFIC CONTROL AND PROTECTION (SPECIAL)	L SUM	1	1			
70103815	TRAFFIC CONTROL SURVEILLANCE	CAL DA	200	200			
70300100	SHORT-TERM PAVEMENT MARKING	FOOT	936	936			
70300220	TEMPORARY PAVEMENT MARKING - LINE 4"	FOOT	6125	6125			
70300240	TEMPORARY PAVEMENT MARKING - LINE 6"	FOOT	700	700			
70300260	TEMPORARY PAVEMENT MARKING - LINE 12"	FOOT	90	90			
70301000	WORK ZONE PAVEMENT MARKING REMOVAL	SQ FT	3074	3074			
70400100	TEMPORARY CONCRETE BARRIER	FOOT	630	630			
70400200	RELOCATE TEMPORARY CONCRETE BARRIER	FOOT	280	280			
* 72400500	RELOCATE SIGN PANEL ASSEMBLY - TYPE A	EACH	7	7			
* 78000200	THERMOPLASTIC PAVEMENT MARKING - LINE 4"	FOOT	4354	4354			

PLOT DATE = 9/19/2005  
 FILE NAME = c:\prow\beta\vol\859\volan\1\trial-revision.dgn  
 PLOT SIZE = 36" X 48" / IN.  
 REFERENCE = SHEET

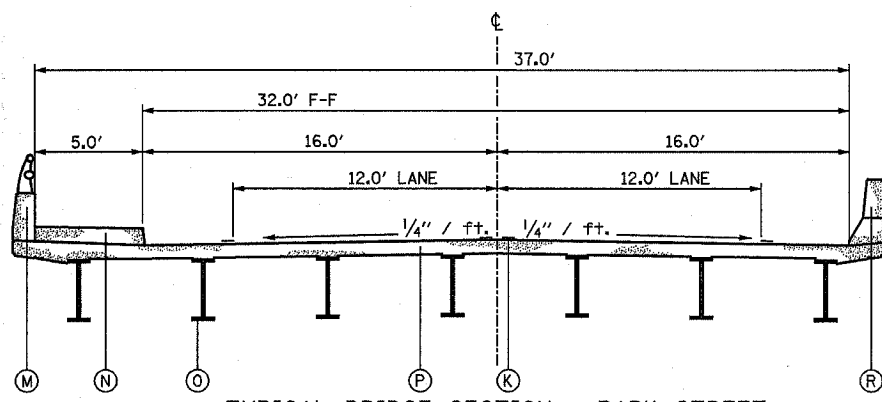
STRUCTURAL DESIGN TRAFFIC: YEAR 2012  
 PV = 5139 SU = 191 MU = 120  
 ROAD/STREET CLASSIFICATION: CLASS II  
 PERCENT OF STRUCTURAL DESIGN TRAFFIC IN DESIGN LANE:  
 P = 50% S = 50% M = 50%  
 TRAFFIC FACTOR: Actual TF = 0.68 AC Type = 20  
 Minimum TF = 3.81  
 PG GRADE: Binder = 64-22 Surface = 64-22  
 SUBGRADE SUPPORT RATING:  
 SSR = Poor (Sta. 3+05 TO 12+90)



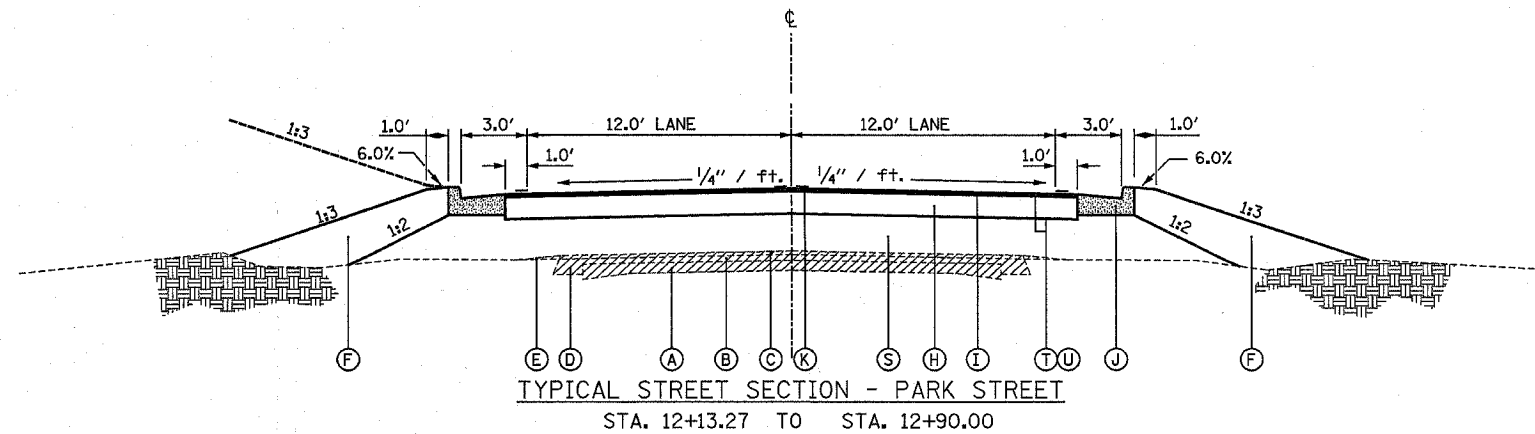
TYPICAL STREET SECTION - PARK STREET  
 STA. 0+38.10 TO STA. 3+05.80



TYPICAL STREET SECTION - PARK STREET  
 STA. 3+20.0 TO STA. 8+70.0 (SIDEWALK LEFT) STA. 3+05.80 TO STA. 12+13.27  
 STA. 8+70.0 TO STA. 12+13.3 (SIDEWALK RIGHT)



TYPICAL BRIDGE SECTION - PARK STREET  
 STA. 5+37.00 TO STA. 6+80.00



TYPICAL STREET SECTION - PARK STREET  
 STA. 12+13.27 TO STA. 12+90.00

BRIDGE REPLACEMENT

CENTERLINE STATIONING  
 STA. 5+37.00 TO STA. 6+80.00

- A. EXISTING PCC PAVEMENT (9-6-9)
- B. EXISTING BITUMINOUS OVERLAY, 3 1/4"
- C. EXISTING BITUMINOUS OVERLAY, 2" (2" TO BE MILLED FROM STA. 0+38.1 TO STA. 3+05.8)
- D. EXISTING BITUMINOUS SHOULDER, 7 1/2"
- E. EXISTING AGGREGATE SHOULDERS, TYPE B
- F. PROPOSED EARTH EMBANKMENT, VARIES
- G. PROPOSED BITUMINOUS CONCRETE SURFACE COURSE, SUPERPAVE, MIX "C", N50, 2" & VARIES
- H. PROPOSED BITUMINOUS CONCRETE BINDER COURSE, SUPERPAVE, IL-19.0, N50, 1 1/2"
- I. PROPOSED BITUMINOUS CONCRETE SURFACE COURSE, SUPERPAVE, MIX "C", N50, 2"
- J. PROPOSED COMBINATION CONCRETE CURB AND GUTTER, TYPE B-6.24
- K. PROPOSED THERMOPLASTIC PAVEMENT MARKING LINE  
 POLYUREA PAVEMENT MARKING LINE (BRIDGE DECK AND CONC. APPROACH)
- L. PROPOSED PORTLAND CEMENT CONCRETE SIDEWALK, 4"
- M. PROPOSED REINFORCED CONCRETE PARAPET AND HANDRAIL
- N. PROPOSED PORTLAND CEMENT CONCRETE SIDEWALK, (ON STRUCTURE ONLY)
- O. PROPOSED WIDE FLANGE BEAMS
- P. PROPOSED REINFORCED CONCRETE BRIDGE DECK
- R. PROPOSED REINFORCED CONCRETE PARAPET
- S. PROPOSED GRANULAR EMBANKMENT, VARIES
- T. PROPOSED BITUMINOUS MATERIALS (PRIME COAT)
- U. PROPOSED AGGREGATE (PRIME COAT)

EXISTING PAVEMENT STRUCTURE TO BE REMOVED WHEN EARTH EMBANKMENT DEPTH LESS THAN 3 INCHES.  
 EXISTING PAVEMENT STRUCTURE SHALL BE BROKEN INTO PIECES NOT TO EXCEED 3 SQ. FT. IN SURFACE AREA. WHEN THE EMBANKMENT IS GREATER THAN 3 INCHES AND LESS THAN 3 FT.

REVISIONS	
NAME	DATE

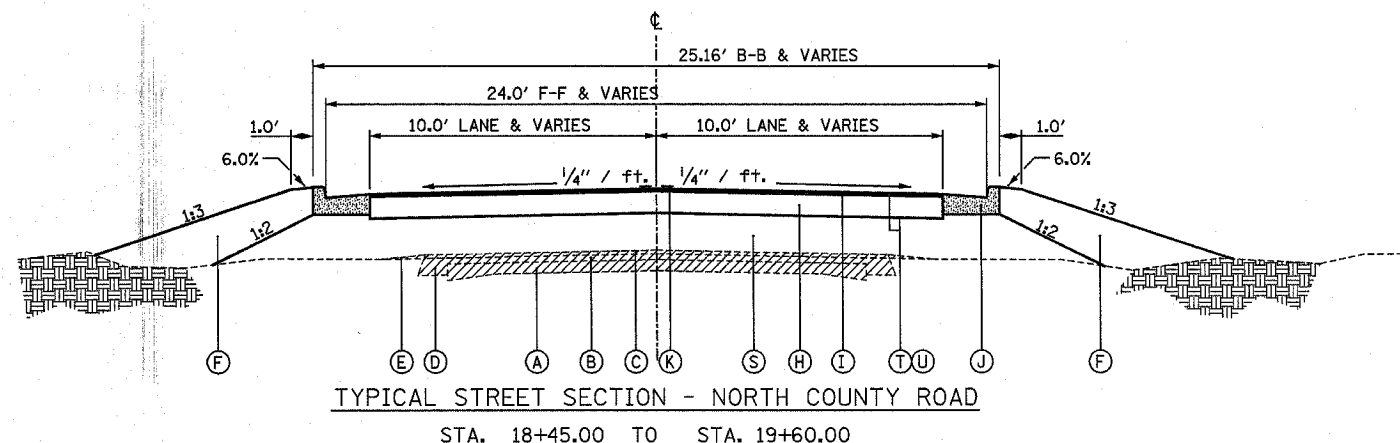
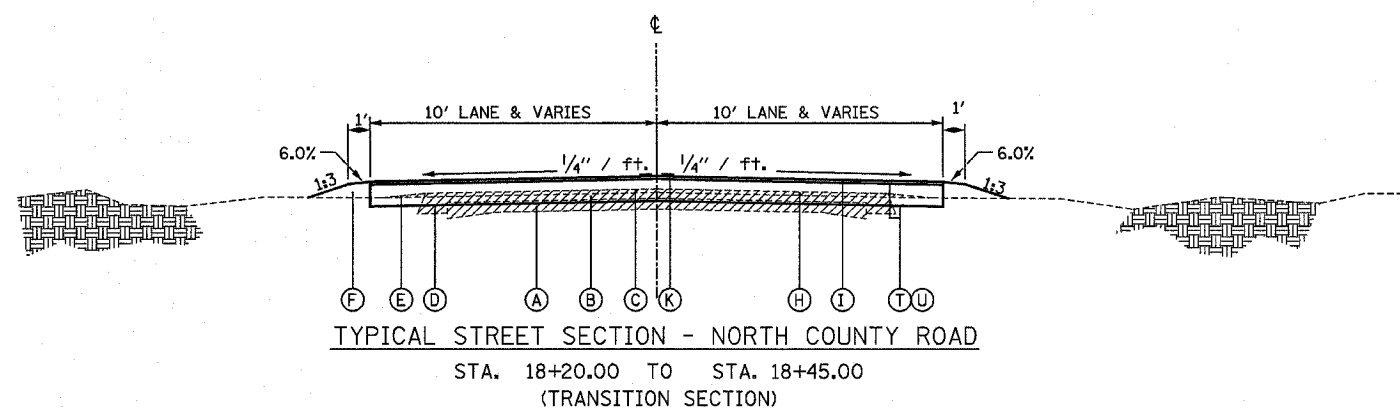
ILLINOIS DEPARTMENT OF TRANSPORTATION  
**TYPICAL SECTIONS**  
**FAS 754 (PARK ST.)**  
 FAS ROUTE 754  
 SECTION 4RS-2, 4BR  
 CALHOUN COUNTY  
 DRAWN BY: WJS  
 CHECKED BY: MKC  
 DATE: MAY, 2003  
 PLOT DATE: 11/3/2005

△ Rev. 11-4-05

PLAN  
 SURVEYED  
 ALIGNED  
 CHECKED  
 FILE NAME  
 NO.

11/3/2005  
 11/3/2005  
 11/3/2005  
 11/3/2005

PLAN  
 SURVEYED \_\_\_\_\_  
 ALIGNED \_\_\_\_\_  
 CHECKED \_\_\_\_\_  
 DATE \_\_\_\_\_  
 NO. \_\_\_\_\_



- A. EXISTING PCC PAVEMENT (9-6-9)
- B. EXISTING BITUMINOUS OVERLAY, 3/4"
- C. EXISTING BITUMINOUS OVERLAY, 2" (2" TO BE MILLED FROM STA. 0+38.1 TO STA. 3+05.8)
- D. EXISTING BITUMINOUS SHOULDER, 7/2"
- E. EXISTING AGGREGATE SHOULDERS, TYPE B
- F. PROPOSED EARTH EMBANKMENT, VARIES
- G. PROPOSED BITUMINOUS CONCRETE SURFACE COURSE, SUPERPAVE, MIX "C", N50, 2" & VARIES
- H. PROPOSED BITUMINOUS CONCRETE BINDER COURSE, SUPERPAVE, IL-19.0, N50, 1 1/2"
- I. PROPOSED BITUMINOUS CONCRETE SURFACE COURSE, SUPERPAVE, MIX "C", N50, 2"
- J. PROPOSED COMBINATION CONCRETE CURB AND GUTTER, TYPE B-6.24
- K. PROPOSED THERMOPLASTIC PAVEMENT MARKING LINE  
 POLYUREA PAVEMENT MARKING LINE (BRIDGE DECK AND CONC. APPROACH)
- L. PROPOSED PORTLAND CEMENT CONCRETE SIDEWALK, 4"
- M. PROPOSED REINFORCED CONCRETE PARAPET AND HANDRAIL
- N. PROPOSED PORTLAND CEMENT CONCRETE SIDEWALK, (ON STRUCTURE ONLY)
- O. PROPOSED WIDE FLANGE BEAMS
- P. PROPOSED REINFORCED CONCRETE BRIDGE DECK
- R. PROPOSED REINFORCED CONCRETE PARAPET
- S. PROPOSED GRANULAR EMBANKMENT, VARIES
- T. PROPOSED BITUMINOUS MATERIALS (PRIME COAT)
- U. PROPOSED AGGREGATE (PRIME COAT)

EXISTING PAVEMENT STRUCTURE TO BE REMOVED WHEN EARTH EMBANKMENT DEPTH LESS THAN 3 INCHES.  
 EXISTING PAVEMENT STRUCTURE SHALL BE BROKEN INTO PIECES NOT TO EXCEED 3 SQ. FT. IN SURFACE AREA. WHEN THE GRANULAR EMBANKMENT IS GREATER THAN 3 INCHES AND LESS THAN 3 FT.

STRUCTURAL DESIGN TRAFFIC: YEAR 2012  
 PV = 5139 SU = 191 MU = 120  
 ROAD/STREET CLASSIFICATION: CLASS II  
 PERCENT OF STRUCTURAL DESIGN TRAFFIC IN DESIGN LANE:  
 P = 50% S = 50% M = 50%  
 TRAFFIC FACTOR: Actual TF = 0.68 AC Type = 20  
 Minimum TF = 3.81  
 PG GRADE: Binder = 64-22 Surface = 64-22  
 SUBGRADE SUPPORT RATING:  
 SSR = Poor (Sta. 3+05 TO 12+90)

Rev. 11-4-05

REVISIONS	
NAME	DATE

ILLINOIS DEPARTMENT OF TRANSPORTATION  
 TYPICAL SECTIONS  
 NORTH COUNTY ROAD  
 FAS ROUTE 754  
 SECTION 4RS-2, 4BR  
 CALHOUN COUNTY

DATE: MAY, 2003

DRAWN BY: WJS  
 CHECKED BY: MKC

DATE: 11/3/2005

F.A.P. RTE.	SECTION	COUNTY	TOTAL SHEETS	SHEET NO.
754	4RS-2, 4BR	CALHOUN	87	10
STA.		TO STA.		
FED. ROAD DIST. NO.		ILLINOIS FED. AID PROJECT		

CONTRACT NO. 76269

BITUMINOUS PAVING SCHEDULE		BITUMINOUS MATERIALS, (PRIME COAT)	AGGREGATE (PRIME COAT)	BITUMINOUS CONCRETE BINDER COURSE SUPERPAVE, IL-19.0 N50, 1 1/2" DEPTH	BITUMINOUS CONCRETE SURFACE COURSE SUPERPAVE, MIX "C" N50, 2" - 2 1/4" DEPTH
STATION to	STATION	TON	TON	TON	TON
0+38.1	3+05.8	1.814	9.550		118.6
3+05.8	5+31.0	1.966	10.347	419.0	75.9
6+86.0	12+90.0	3.850	20.267	1140.4	187.2
18+20.0	19+60.0		5.459	254.1	50.9
TOTAL		8.700	45.600	1,813.5	433

APPROACH PAVEMENT DRAIN SCHEDULE		CONCRETE THRUST	PIPE DRAINS 12"	METAL END SECTIONS	TYPE D INLET BOX STANDARD 609001 EACH
STATION	SIDE	EACH	FOOT	EACH	
5+49.5	RT.	1	24	1	1
5+57.5	LT.	1	23	1	1
TOTAL		2	47	2	2

SIDEWALK SCHEDULE			PCC SIDEWALK 4 INCH	SIDEWALK REMOVAL
STATION TO	STATION	SIDE	SQ FT	SQ FT
2+75		LT.	24	24
3+09	3+53	LT.	250	19
3+16		RT.	11.8	
4+11	4+32	LT.	80	
4+57	4+95	LT.	160	
5+19	5+72	LT.	250	
6+56	7+62	LT.	525	
7+98	8+16	LT.	70	
8+70	9+08	RT.	194	
9+33	10+08	RT.	345	
10+18	11+04	RT.		258
10+33	11+10	RT.	465	
11+22	11+72	RT.	225	
11+24	11+60	RT.		108
11+84	12+33	RT.	142	
11+93	12+13	RT.		
19+10	19+66	RT.	375	60.9
8+70.30		RT.	20	
9+81.10		RT.	50	
10+83.60		RT.	50	48
11+45.80		RT.	45	42
TOTAL			3,269	560

DETECTABLE WARNING SCHEDULE		DETECTABLE WARNING
STATION	SIDE	SQ FT
2+75	LT.	8
3+09	LT.	8
3+16	RT.	8
3+53	LT.	8
4+11	LT.	8
4+32	LT.	8
4+57	LT.	8
4+95	LT.	8
5+19	LT.	8
7+62	LT.	8
7+98	LT.	8
8+16	LT.	8
8+54	LT.	8
8+63	LT.	8
8+78	RT.	8
9+08	RT.	8
9+33	RT.	8
10+08	RT.	8
10+33	RT.	8
TOTAL		152

CURB & GUTTER SCHEDULE			COMBINATION CURB & GUTTER REMOVAL	COMBINATION CURB & GUTTER TYPE B-6.24	COMMENTS
STATION to	STATION	SIDE	FOOT	FOOT	
3+04	3+23	LT.		28	RETURN
3+06		LT.	26		
3+06		RT.	8		
3+14	3+36	RT.		40	RETURN
3+23	5+41	LT.		214	
3+36	5+33	RT.		203	
6+75	12+90	RT.		610	
6+85	8+50	LT.		170	
9+43	12+90	LT.		347	
18+45	19+30	LT.		85	N. COUNTY ROAD
18+45	19+35	RT.		90	N. COUNTY ROAD
19+30	19+95	LT.		72	N. COUNTY ROAD (RETURN)
19+35	19+65	RT.		61	N. COUNTY ROAD (RETURN)
TOTAL			34	1,920	

TEMPORARY RAMP SCHEDULE			TEMPORARY RAMP
STATION TO	STATION	SIDE	SQ YD
3+05.8	3+37.5	RAMP 1	119.0
5+05.3	5+37.0	RAMP 1	91.6
6+80.0	7+11.7	RAMP 1	91.6
12+58.3	12+90.0	RAMP 1	91.6
3+05.8	3+24.1	RAMP 2	79.0
5+18.0	5+37.0	RAMP 2	53.2
6+80.0	6+98.4	RAMP 2	53.2
12+71.6	12+90.0	RAMP 2	53.2
3+05.8	3+12.5	RAMP 3	38.4
5+30.3	5+37.0	RAMP 3	19.4
6+80.0	6+86.7	RAMP 3	19.4
12+83.3	12+90.0	RAMP 3	19.4
TOTAL			729.0

ENTRANCE SCHEDULE				DRIVEWAY PAVEMENT REMOVAL	AGGREGATE SURFACE COURSE 6" DEPTH	PCC DRIVEWAY PAVEMENT 6" DEPTH	COMBINATION CURB & GUTTER TYPE B-6.24
STATION	TYPE	SIDE	MATL.	SQ YD	TON	SQ YD	FOOT
3+63	CE	RT.	CONC.			42.7	20.0
3+82	PARKING AREA	LT.	CONC.			101.6	24.0
4+54	CE	LT.	CONC.	105		105	26.0
5+07	CE	LT.	CONC.	74.4		74.4	24.0
7+40	CE	RT.	CONC. BIT.	67.8	20.0	8.9	17.0
7+80	CE	LT.	CONC. BIT.		10.9	50.8	40.0
8+34	CE	LT.	CONC. BIT.		11.2		38.0
9+14	CE	RT.	CONC. AGG.		43.5	48.4	26.0
10+14	CE	RT.	CONC. AGG.		28.3	25.0	26.0
11+16	PE	RT.	CONC. AGG.		1.3	25.0	24.0
11+78	PE	RT.	CONC.			15.2	22.0
19+41	PE	LT.	CONC. AGG.		23.6	15.2	18.0
8+34.30	PARKING AREA	LT.	CONC. AGG.		86.7	9.4	
9+13.54	PARKING AREA	RT.	CONC. AGG.		266.6		
10+13.87	PARKING AREA	RT.	CONC. AGG.		107.1		
TOTAL				247.2	601.7	522	305.0

CONCRETE STAIR SCHEDULE		CONCRETE	REINFORCEMENT BARS	PIPE HANDRAIL
STATION to	STATION	CU YD	POUND	FOOT
8+72		0.62	33	12
9+83.1		0.53	30	12
10+83.6		0.26	15	
11+45.8		0.17	12	
TOTAL		1.58*	90*	24

\* SHOWN FOR INFORMATION ONLY, ALL LOCATIONS PAID FOR AS "CONCRETE STAIRS", 1 LUMP SUM

REVISIONS	
NAME	DATE

ILLINOIS DEPARTMENT OF TRANSPORTATION  
**SCHEDULE OF QUANTITIES**  
 F.A.S. ROUTE 754 (IL 100/Park St.)  
 SECTION 4RS-2, 4BR  
 CALHOUN COUNTY  
 DRAWN BY WJS  
 DATE MAY, 2004  
 CHECKED BY LLO

Rev. 11-4-05

F.A.P. RTE.	SECTION	COUNTY	TOTAL SHEETS	SHEET NO.
754	4RS-2, 4BR	CALHOUN	87	11
STA.		TO STA.		
FED. ROAD DIST. NO.		ILLINOIS FED. AID PROJECT		

CONTRACT NO. 76269

GUARDRAIL SCHEDULE			TRAFFIC BARRIER TERMINAL, TYPE 2 EACH	TRAFFIC BARRIER TERMINAL, TYPE 6 EACH	TRAFFIC BARRIER TERMINAL, TYPE 1, SPECIAL, (TANGENT) EACH	STEEL PLATE BEAM GUARDRAIL TYPE A FOOT	TERMINAL MARKER DIRECTLY APPLIED FOOT	GUARDRAIL REMOVAL FOOT	BARRIER WALL MARKERS EACH	GUARDRAIL MARKERS, TYPE A EACH
STATION to	STATION	SIDE								
4+82	5+32	RT.			1		1			1
5+21	5+40	LT.	1 (10' R)			12.5				1
5+32	5+63	RT.		1						1
5+40	5+71	LT.		1						1
5+44	5+98	RT.						50.8		
5+45	5+98	LT.						50.3		
6+20	6+58	LT.						38		
6+46	6+77	RT.		1						1
6+55	6+86	LT.		1						1
6+77	7+27	RT.			1		1			1
6+86	7+36	LT.			1		1			1
PARAPET		RT.							1	
PARAPET		LT.							1	
TOTAL			1	4	3	12.5	3	139.1	2	8

MISCELLANEOUS REMOVAL SCHEDULE			BITUMINOUS SURFACE REMOVAL, 2" SQ YD	PIPE CULVERT REMOVAL FOOT	PLUG EXISTING CULVERTS EACH	TREE REMOVAL UNIT	CONCRETE RETAINING WALL REMOVAL FOOT	DRIVEWAY PAVEMENT REMOVAL SQ YD	PAVEMENT REMOVAL SQ YD	CONCRETE HEADWALL REMOVAL EACH	REMOVING INLETS EACH
STATION to	STATION	SIDE									
0+38.1	3+05.8	LT. & RT.	963								
3+05.8	4+10	LT. & RT.							327.6		
3+10	4+91	RT.						267.4			
3+10	4+32	LT.						270.7			
6+27		13' RT. TO 33' RT.					36				
6+31	7+36	LT.		105							
7+13		29' RT. TO 65' RT.		20	1						1
7+57	7+98	LT.		41							
8+11	8+61	LT.		50						2	
8+83	9+24	LT.		41							
9+76		RT.				30					
11+36.4	11+97.7	LT.					62				
11+70	12+90	LT. & RT.							263.0		
18+20	18+45	LT. & RT.	57								
18+45	19+20	LT. & RT.							157.6		
TOTAL			1020	257	1	30	98	538.1	748.2	2	1

ADJUSTMENT SCHEDULE				RELOCATE SIGN PANEL ASSEMBLY TYPE A EACH
STATION	SIGN DESCRIPTION	RELOCATION		
5+85 15' RT	SPEED LIMIT	5+45 19' RT	1	
8+81 28' LT	STOP	8+77 35' LT	1	
8+82 21' LT	STREET NAME	8+70 26' LT	1	
9+23 15' RT	HIGHWAY DESIGNATION	9+50 24' RT	1	
10+20 13' RT	CITY DIRECTIONAL/MILEAGE	10+43 24' RT	1	
10+38 18' LT	PRIVATE CLUB	10+38 20' LT	1	
11+99 13' LT	SPEED LIMIT	12+00 19' LT	1	
TOTAL			TOTAL	7

PAVEMENT MARKING SCHEDULE			THERMOPLASTIC PAVEMENT MARKING - LINE 4" FOOT	THERMOPLASTIC PAVEMENT MARKING - LINE 12" FOOT	THERMOPLASTIC PAVEMENT MARKING - LINE 24" FOOT	PAINT PAVEMENT MARKING - LINE 4" FOOT	POLYUREA PAVEMENT MARKING TYPE I - LINE 4" FOOT	RAISED REFLECTIVE PAVEMENT MARKERS EACH
STATION TO	STATION	SIDE						
0+53	2+66	LT	213					
0+38.10	2+66	CTR	455.8					4
0+53	2+66	RT	213					
3+22.5	5+39	LT	216.5					
3+22.5	5+37	CTR	429					4
3+35.7	5+35	RT	199.3					
5+39	6+82	LT					143	
5+37	6+80	CTR					286	
5+35	6+78	RT					143	
6+82	8+50	LT	168					
6+80	8+68	CTR	376					
6+78	12+90	RT	612					3
9+43	12+90	RT	347					
8+47	12+90	CTR	832					
18+20	19+66	NO. CO. RD.						6
CROSSWALKS			292					
PARK ST & FRENCH ST				166				
PARK ST & NO. CO. RD.				73				
STOP BARS								
PARK ST. & FRENCH ST.					48			
PARK ST. & NO. CO. RD.					22			
PARKING SPACES ALONG PARK ST.						140		
TOTAL			4353.6	239	70	140	572	17

Rev. 11-4-05

REVISIONS	
NAME	DATE

ILLINOIS DEPARTMENT OF TRANSPORTATION  
**SCHEDULE OF QUANTITIES**  
 F.A.S. ROUTE 754 (IL 100/Park St.)  
 SECTION 4RS-2, 4BR  
 CALHOUN COUNTY  
 DRAWN BY WJS  
 CHECKED BY LLO  
 DATE MAY, 2004

F.A.P. RTE.	SECTION	COUNTY	TOTAL SHEETS	SHEET NO.
754	4RS-2, 4BR	CALHOUN	87	12
STA.		TO STA.		
FED. ROAD DIST. NO.		ILLINOIS FED. AID PROJECT		

CONTRACT NO. 76269

SEEDING SCHEDULE		SEEDING CLASS 1A	NITROGEN FERTILIZER NUTRIENT	PHOSPHORUS FERTILIZER NUTRIENT	POTASSIUM FERTILIZER NUTRIENT	AGRICULTURAL GROUND LIMESTONE	MULCH METHOD 2	TEMPORARY EROSION CONTROL SEEDING
		ACRE	ACRE	ACRE	ACRE	TON	ACRE	ACRE
PARK STREET								
3+50.8	3+55	LT	0.0028	0.252	0.252	0.005	0.0028	0.0028
4+11	4+33	LT	0.0069	0.621	0.621	0.014	0.0069	0.0069
4+47	4+80	LT	0.0083	0.747	0.747	0.017	0.0083	0.0083
4+80	4+96	LT	0.0063	0.567	0.567	0.013	0.0063	0.0063
5+19	5+72	LT	0.0149	1.341	1.341	0.030	0.0149	0.0149
6+72	7+67	LT	0.0399	3.591	3.591	0.080	0.0399	0.0399
7+93	8+21	LT	0.0031	0.279	0.279	0.018	0.0031	0.0031
8+45	8+72	LT	0.0088	0.792	0.792	0.006	0.0088	0.0088
9+22	10+80	LT	0.0697	6.273	6.273	0.139	0.0697	0.0697
10+80	12+90	LT	0.0092	0.828	0.828	0.018	0.0092	0.0092
3+05	4+80	RT	0.0066	0.594	0.594	0.013	0.0066	0.0066
3+72	3+48	RT	0.0224	2.016	2.016	0.045	0.0224	0.0224
4+80	5+67	RT	0.0237	2.133	2.133	0.047	0.0237	0.0237
6+55	7+33	RT	0.0245	2.205	2.205	0.049	0.0245	0.0245
7+48	8+70	RT	0.0410	3.690	3.690	0.083	0.0410	0.0410
8+77	9+22	RT	0.0154	1.386	1.386	0.031	0.0154	0.0154
9+33	9+81	RT	0.0218	1.962	1.962	0.044	0.0218	0.0218
9+86	10+18	RT	0.0095	0.855	0.855	0.019	0.0095	0.0095
10+32	10+80	RT	0.0131	1.179	1.179	0.026	0.0131	0.0131
10+83	11+10	RT	0.0050	0.450	0.450	0.010	0.0050	0.0050
11+22	11+73	RT	0.0032	0.288	0.288	0.006	0.0032	0.0032
11+84	12+90	RT	0.0066	0.594	0.594	0.013	0.0066	0.0066
NO. COUNTY RD.								
18+20	19+40	LT	0.0200	1.800	1.800	0.041	0.0200	0.0200
18+20	19+61	RT	0.0080	0.720	0.720	0.016	0.0080	0.0080
TOTAL			0.40	35.0	35.0	0.80	0.40	0.40

DRAINAGE AND STORM SEWER SCHEDULE		STORM SEWERS CLASS A, TYPE 1 12" DIA. FOOT	STORM SEWERS CLASS A, TYPE 1 15" DIA. FOOT	STORM SEWERS CLASS A, TYPE 1 18" DIA. FOOT	STORM SEWERS TYPE 1, WATER MAIN QUALITY 12" DIA. FOOT	STORM SEWERS TYPE 1, WATER MAIN QUALITY 15" DIA. FOOT	STORM SEWERS TYPE 2, WATER MAIN QUALITY 18" DIA. FOOT	INLETS, TY A TYPE 8 GRATE EACH	INLETS, TY A, TY 3 FRAME & GRATE EACH	INLETS, TY B, TY 3 FRAME & GRATE EACH	PRECAST REINF. CONC. FLARED END SECTION 18" DIA. EACH	PIPE CULVERTS CLASS D, TYPE 1 12" FOOT	TRENCH BACKFILL CU YD	METAL END SECTIONS 12" EACH	CONCRETE COLLAR EACH
4+85								1							
4+85	5+80		94										9.2		
6+36	7+04.15	64											25.8		
6+49	7+04.15	54											25.8		
7+04.15									2						
7+10	7+55											45		2	
18+70.5									1						
18+70.5					22								3.2		
18+70.5										1					
18+70.5	19+78.7					110							13.6		
19+35.7	19+60.7											25	3.8	2	
19+78.7										1					
19+78.7	19+80	12													
19+80								1							
19+78.7	20+20						40						4.2		
20+20										1					
20+20	20+40						20								
20+40															1
20+40	21+30.7			97											
20+30.7											1				
TOTAL		130	94	97	22	110	60	2	3	3	1	70	86	4	1

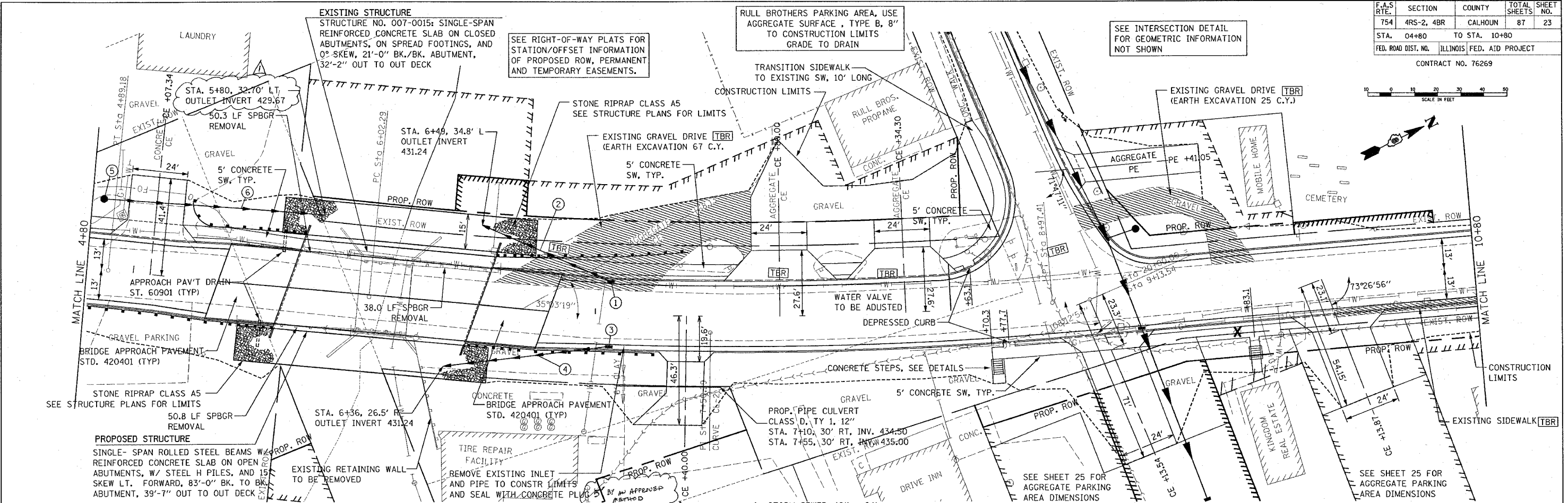
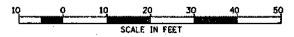
REVISIONS	
NAME	DATE

ILLINOIS DEPARTMENT OF TRANSPORTATION  
**SCHEDULE OF QUANTITIES**  
 F.A.S. ROUTE 754 (IL 100/Park St.)  
 SECTION 4RS-2, 4BR  
 CALHOUN-COUNTY  
 DRAWN BY WJS  
 CHECKED BY LLQ  
 DATE MAY, 2004

Rev. 11-4-05



F.A.S. RTE.	SECTION	COUNTY	TOTAL SHEETS	SHEET NO.
754	4RS-2, 4BR	CALHOUN	87	23
STA. 04+80 TO STA. 10+80		ILLINOIS FED. AID PROJECT		
FED. ROAD DIST. NO.		CONTRACT NO. 76269		



DATE	BY

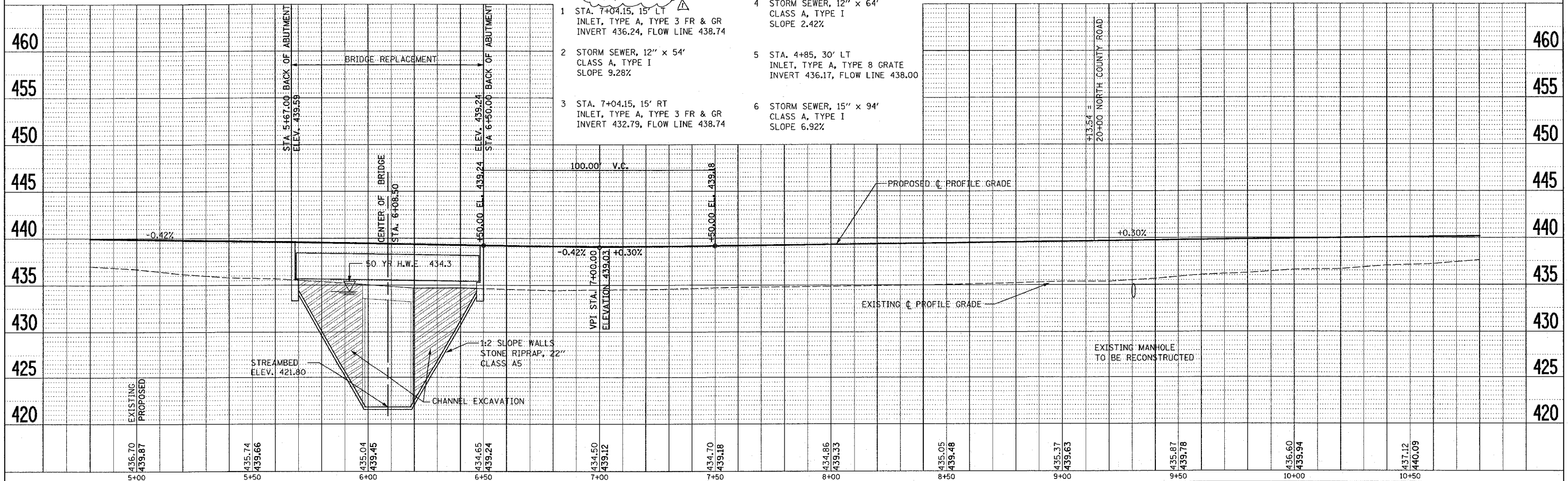
PROFILE SURVEYED, GRADES CHECKED, STRUCTURE NOTING PERIOD

PLAN SURVEYED, ALIGNMENT CHECKED, PAVED FILE NAME, NOTE BOOK NO.

DATE	BY

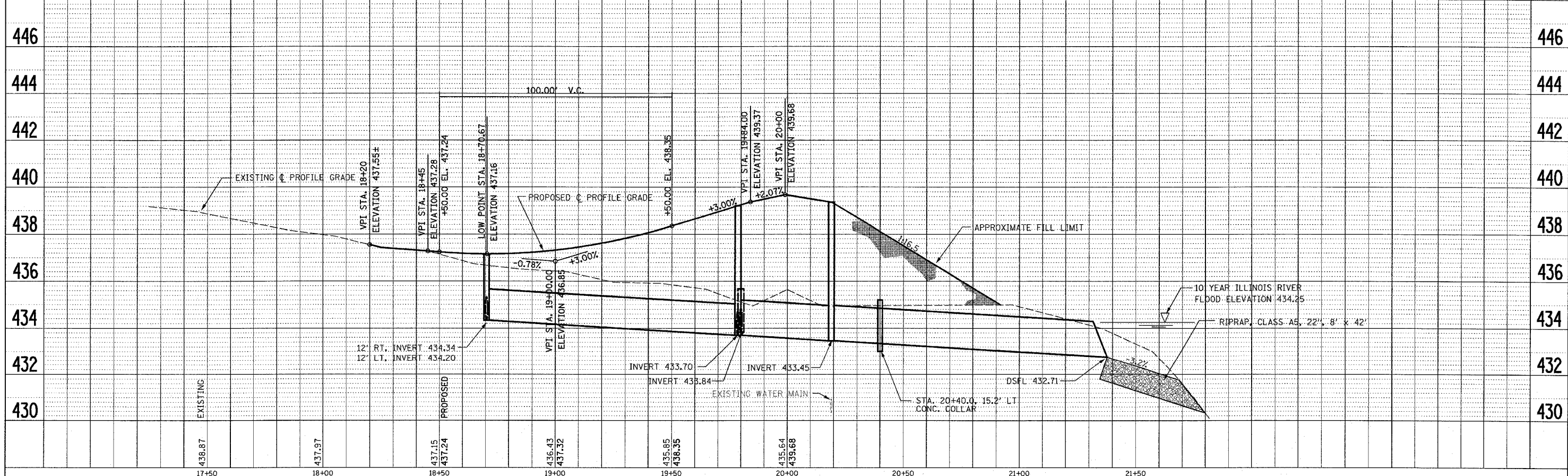
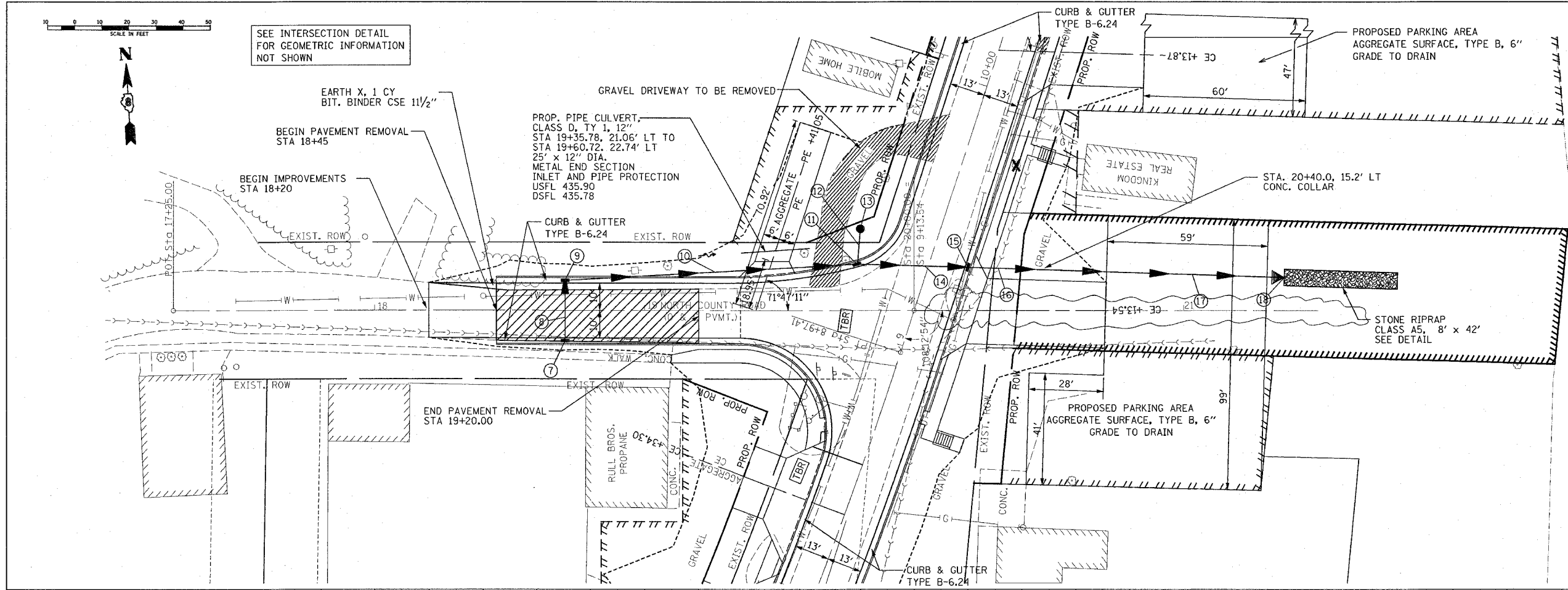
PROFILE SURVEYED, GRADES CHECKED, STRUCTURE NOTING PERIOD

PLAN SURVEYED, ALIGNMENT CHECKED, PAVED FILE NAME, NOTE BOOK NO.



F.A.S. RTE.	SECTION	COUNTY	TOTAL SHEETS	SHEET NO.
754	4RS-2, 4BR	CALHOUN	87	25
STA. 18+45 TO STA. 20+00				
FED. ROAD DIST. NO.		ILLINOIS FED. AID PROJECT		

- 7 CONTRACT NO. 76269  
STA. 18+70.50, 12' RT  
INLET, TYPE A, TYPE 3 FR & GR  
INVERT 434.34, FLOW LINE 436.84
- 8 STORM SEWER, TYPE I, WATER  
MAIN QUALITY PIPE, 12" x 22"  
SLOPE 0.64%
- 9 STA. 18+70.50, 12' LT  
INLET, TYPE B, TYPE 3 FR & GR  
INVERT 434.20, FLOW LINE 436.84
- 10 STORM SEWER, TYPE I, WATER  
MAIN QUALITY PIPE, 15" x 110"  
SLOPE 0.47%
- 11 STA. 19+78.70, 18' LT  
INLET, TYPE B, TYPE 3 FR & GR  
INVERT 433.70, FLOW LINE 438.98
- 12 STORM SEWER, 12" x 12'  
CLASS A, TYPE I  
SLOPE 1.33%
- 13 STA. 19+80, 30' LT  
INLET, TYPE A, TYPE 8 GRATE  
INVERT 433.84, FLOW LINE 435.67  
INLET AND PIPE PROTECTION
- 14 STORM SEWER, TYPE 2, WATER  
MAIN QUALITY PIPE, 18" x 40"  
SLOPE 0.64%
- 15 STA. 20+20.0, 15.8' LT  
INLET, TYPE B, TYPE 3 FR & GR  
INVERT 433.45, FLOW LINE 439.36
- 16 STORM SEWER, TYPE 2, WATER  
MAIN QUALITY PIPE, 18" x 20"  
SLOPE 0.64%
- 17 STORM SEWER, 18" x 9"  
CLASS A, TYPE I  
SLOPE 0.64%
- 18 STA 21+30.7, 12.2' LT  
18" PRECAST RCFCES  
DSFL 432.71



DATE	
BY	
PLAN	
SURVEYED	
PLOTTED	
CHECKED	
DATE	
NOTE BOOK	
NO.	
STRUCTURE NOTATION	
NO.	

DATE	
BY	
PROFILE	
SURVEYED	
PLOTTED	
CHECKED	
DATE	
NOTE BOOK	
NO.	
STRUCTURE NOTATION	
NO.	

Rev. 11-4-05

PART OF THE NE 1/4 OF SECTION 27, T.10S., R.2W., OF THE 4TH PM, CALHOUN COUNTY, ILLINOIS

BEARINGS SHOWN HEREON ARE BASED ON SURVEY CONTROL DATA AS PROVIDED BY THE ILLINOIS DEPARTMENT OF TRANSPORTATION.

FAS ROUTE	SECTION	COUNTY	TOTAL SHEETS	SHEET NO.
754	4RS-2, 4BR	CALHOUN	87	26

CONTRACT NO. 76269

LEGEND

- EXISTING CENTERLINE
- EXISTING RIGHT OF WAY LINE
- EXISTING EASEMENT LINE
- PROPOSED CENTERLINE
- PROPOSED RIGHT OF WAY LINE
- PROPOSED TEMPORARY EASEMENT LINE
- PROPOSED PERMANENT EASEMENT LINE
- SECTION LINE
- QUARTER SECTION LINE
- QUARTER QUARTER SECTION LINE
- PROPERTY (DEED) LINE
- APPARENT PROPERTY LINE
- MEASURED DIMENSION
- COMPUTED DIMENSION
- RECORDED DIMENSION
- FOUND IRON PIPE OR IRON ROD
- SET 1/2 INCH IRON ROD
- PERMANENT SURVEY MONUMENT, I.D.O.T. STD. 2135
- (TO BE SET BY OTHERS)
- SET DRILL HOLE IN CONC. SWK.
- SAME OWNERSHIP
- FOUND R/W MONUMENT

- STAKING OF PROPOSED RIGHT OF WAY. SET 1/2 INCH METAL ROD WITH DIVISION OF HIGHWAY SURVEY MARKER TO MONUMENT THE POSITION SHOWN. IDENTIFIED BY INSCRIPTION DATA AND SURVEYORS REGISTRATION NUMBER.
- STAKING OF PROPOSED RIGHT OF WAY IN CULTIVATED AREAS. SET 1/2 INCH METAL ROD WITH DIVISION OF HIGHWAY SURVEY MARKER 20 INCHES BELOW GROUND SURFACE TO MONUMENT THE POSITION SHOWN. IDENTIFIED BY INSCRIPTION DATA AND SURVEYORS REGISTRATION NUMBER.

STATE OF ILLINOIS )  
 ) SS  
COUNTY OF CALHOUN )

THIS IS TO CERTIFY THAT I, GEORGE E. LOCKHART AN ILLINOIS PROFESSIONAL LAND SURVEYOR, HAS SURVEYED THE PLAT OF HIGHWAYS SHOWN HEREON IN SECTION 27, TOWNSHIP 10 SOUTH, RANGE 2 WEST, OF THE THIRD PRINCIPAL MERIDIAN, CALHOUN COUNTY, THAT THE SURVEY IS TRUE AND COMPLETE AS SHOWN TO THE BEST OF MY KNOWLEDGE AND BELIEF, THAT THE PLAT CORRECTLY REPRESENTS SAID SURVEY, THAT ALL MONUMENTS FOUND AND ESTABLISHED ARE OF PERMANENT QUALITY AND OCCUPY THE POSITIONS SHOWN THEREON AND THAT THE MONUMENTS ARE SUFFICIENT TO ENABLE THE SURVEY TO BE RETRACED. MADE FOR THE DEPARTMENT OF TRANSPORTATION, STATE OF ILLINOIS.

DATED \_\_\_\_\_

GEORGE E. LOCKHART, PLS #2485  
LICENSE RENEWAL DATE: 11/30/2006  
NOTE: SIGNATURE AND DATE REVISED FOR ADDITION OF PARCELS 8027A51-TE AND 8027A54-TE TO THIS SHEET

PARCEL	EXISTING R.O.W. RECORDED INFORMATION	BOOK/PAGE	DATE RECORDED
8027051	DEED BOOK 5 / 174		JUNE 9, 1923
8027065	DEED BOOK 5 / 117		MAY 28, 1923
8027052-TE	DEED BOOK 5 / 117		MAY 28, 1923
8027054-TE	PLAT BOOK 1 / 28		MAY 31, 1897
8027054-TE	DEED BOOK 5 / 165		JUNE 4, 1923
8027054-TE	MISC. REC. 10 / 344		SEPT. 15, 1959

COORDINATES SHOWN HEREON ARE BASED ON SURVEY CONTROL DATA AS PROVIDED BY THE ILLINOIS DEPARTMENT OF TRANSPORTATION.

STATION	OFFSET	COORDINATE TABLE		DESC.
		NORTH	EAST	
0+52.50	0	907,119.042	2,168,710.438	PROJECT BEGIN
2+05.00	0	907,271.088	2,168,722.186	P.C.
3+18.67	30.00' RT	907,374.751	2,168,770.843	PROPOSED R.O.W.
3+50.00	17.84' LT	907,415.657	2,168,733.358	P.I.
3+79.96	30.00' RT	907,429.787	2,168,789.439	PROPOSED R.O.W.
4+12.17	46.54' LT	907,490.043	2,168,732.074	TEMP. ESMT.
4+18.05	30.00' LT	907,488.682	2,168,749.112	TEMP. ESMT.
4+41.48	30.00' LT	907,510.709	2,168,760.750	TEMP. ESMT.
4+49.37	63.25' LT	907,533.913	2,168,735.460	TEMP. ESMT.
4+59.72	38.71' LT	907,531.835	2,168,762.380	TEMP. ESMT.
4+99.18	0	907,537.974	2,168,811.227	P.T.
5+67.58	73.52' RT	907,564.628	2,168,915.353	PROPOSED R.O.W.
5+67.60	90.00' RT	907,555.798	2,168,929.265	TEMP. ESMT.
5+83.94	64.80' RT	907,583.114	2,168,916.780	PROPOSED R.O.W.
5+97.13	90.00' RT	907,580.702	2,168,945.119	TEMP. ESMT.
6+02.29	0	907,633.389	2,168,871.970	P.C.
7+50.29	6.98' RT	907,756.237	2,168,951.451	P.I.

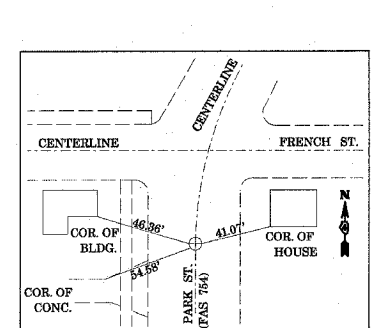
**Benton & Associates, Inc.**  
Consulting Engineers & Land Surveyors  
1970 West Lafayette Avenue Jackson, Illinois 62680  
Phone: 217-246-4146 Fax: 217-246-4148

ILLINOIS DEPARTMENT OF TRANSPORTATION  
PLAT OF HIGHWAYS  
FAP ROUTE 754 (Park St.-Hardin)  
SECTION 4RS-2, 4BR  
CALHOUN COUNTY  
JOB NO. R-98-027-00

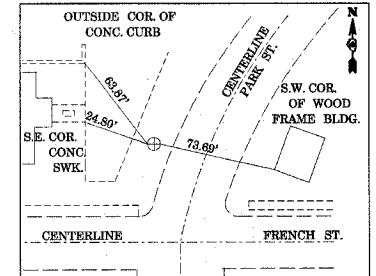
STATION 3+16.70 TO STATION 5+97.13  
SCALE: 1" = 30'  
SHEET 2 OF 5

ILLINOIS DEPARTMENT OF TRANSPORTATION  
DIVISION OF HIGHWAYS/DISTRICT 8  
1102 EASTPORT PLAZA DRIVE  
COLLINSVILLE, ILLINOIS 62234-6198

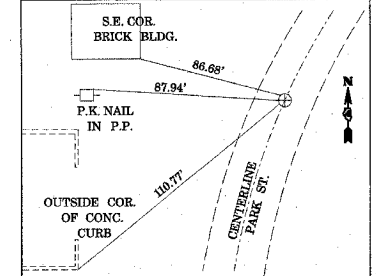
SHEET 1 OF 5 IS A COVER SHEET AND IS NOT RECORDED



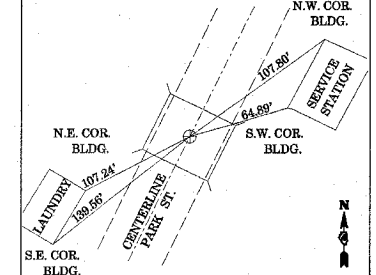
CENTERLINE P.C. STA. 2+05.00  
P.K. NAIL IN ASP. PAVEMENT



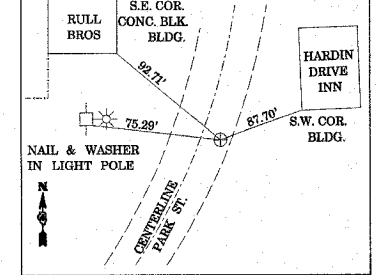
CENTERLINE P.I. STA. 3+50.00  
CROSSING SPIKE IN GRAVEL SHOULDER



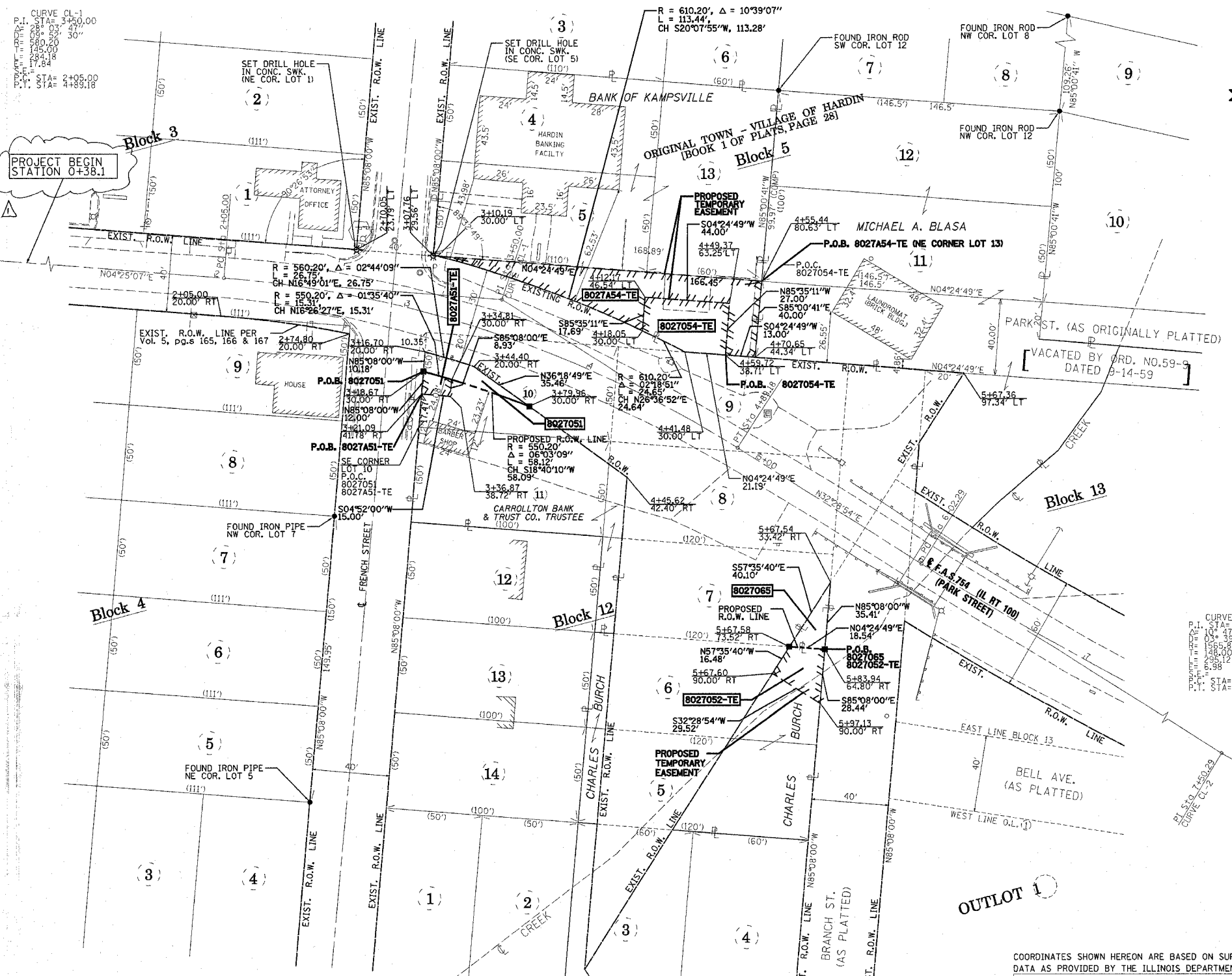
CENTERLINE P.T. STA. 4+89.18  
P.K. NAIL IN PAVEMENT



CENTERLINE P.C. STA. 6+02.29  
P.K. NAIL IN PAVEMENT OVER BRIDGE DECK



CENTERLINE P.I. STA. 7+50.29  
P.K. NAIL IN PAVEMENT



PARCEL NO.	OWNER	TOTAL HOLDING	R.O.W. REQUIRED	PREVIOUSLY DEDICATED	REMAINDER	EASEMENTS TEMP	EASEMENTS PERM	EASEMENT PURPOSE	PERMANENT TAX NUMBER	PROPERTY ACQUIRED BY
8027051	CARROLLTON BANK & TRUST COMPANY OF CARROLLTON, ILLINOIS, AS TRUSTEE UNDER A TRUST AGREEMENT DATED THE 22nd DAY OF DEC. 1992, KNOWN AS TRUST #25-0492-2, TITLE REPORT NO. CN-172	0.1751 AC± (7,626 S.F.±)	0.0096 AC± (418 S.F.±)	N/A	0.1655 AC± (7,208 S.F.±)				08-27-201-124	
8027052-TE	CHARLES BURCH TITLE REPORT NO. CN-201	0.2755 AC± (12,000 S.F.±)		N/A	0.2755 AC± (12,000 S.F.±)	0.0116 AC± (507 S.F.±)		CHANNEL GRADING AT PROPOSED BRIDGE	06-08-27-201-123	
8027054-TE	BANK OF KAMPSVILLE, AN ILLINOIS BANKING CORPORATION TITLE REPORT NO. CN-173	0.4718 AC (20,550 S.F.±)		N/A	0.4718 AC (20,550 S.F.±)	0.0248 AC± (1,080 S.F.±)		ENTRANCE CONSTRUCTION AND WORK AREA	08-27-201-503	
8027065	CARROLLTON BANK & TRUST COMPANY OF CARROLLTON, ILLINOIS, AS TRUSTEE UNDER A TRUST AGREEMENT DATED THE 22nd DAY OF DEC. 1992, KNOWN AS TRUST #25-0492-2, TITLE REPORT NO. CN-172	0.0075 AC± (328 S.F.±)	0.0075 AC± (328 S.F.±)	N/A	0.0000 AC				08-27-201-124	
8027A51-TE	CARROLLTON BANK & TRUST COMPANY OF CARROLLTON, ILLINOIS, AS TRUSTEE UNDER A TRUST AGREEMENT DATED THE 22nd DAY OF DEC. 1992, KNOWN AS TRUST #25-0492-2, TITLE REPORT NO. CN-213	0.1655 AC± (7,208 S.F.±)		N/A	0.1655 AC± (7,208 S.F.±)	0.0036 AC± (158 S.F.±)		ENTRANCE CONSTRUCTION AND WORK AREA	08-27-201-124	
8027A54-TE	BANK OF KAMPSVILLE, AN ILLINOIS BANKING CORPORATION TITLE REPORT NO. CN-214	0.4718 AC (20,550 S.F.±)		N/A	0.4718 AC (20,550 S.F.±)	0.0591 AC± (2,574 S.F.±)		ENTRANCE CONSTRUCTION AND WORK AREA	08-27-201-503	

\* - NOTE: THIS TOTAL HOLDING IS FOR ALL OF LOTS 5 & 6 AS PER TITLE COMMITMENT. ACTUAL USABLE AREA OUTSIDE OF EXISTING RIGHT-OF-WAY LINES IS 0.1254 AC± (5,461 S.F.±)

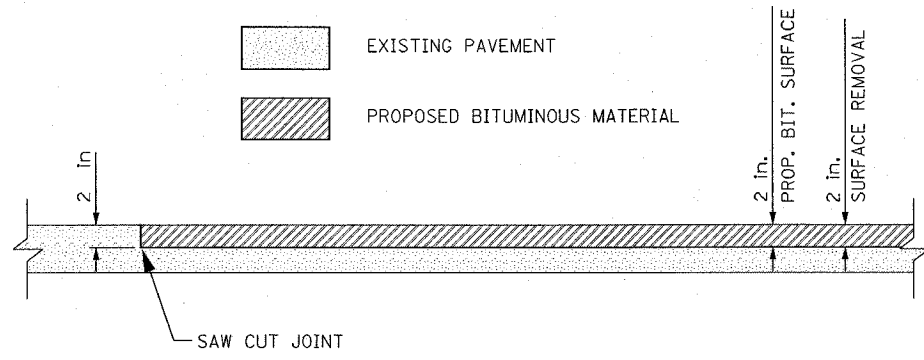
Rev. 11-4-05

PLOT DATE: 11/27/2005

**PAVEMENT JOINT DETAIL**

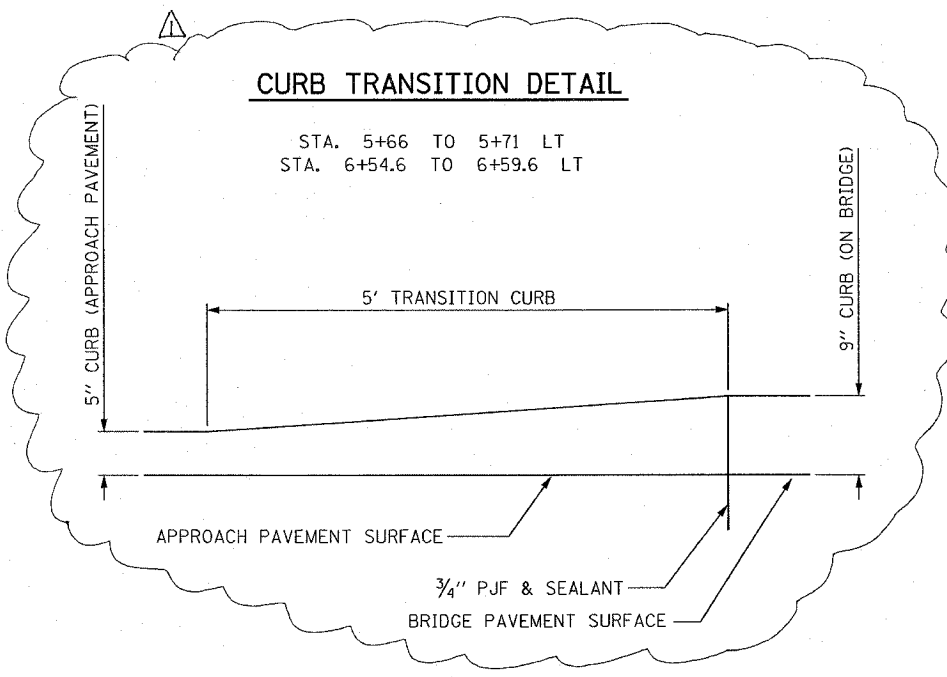
STA. 0+38.10 (FAS 754, PARK ST.) TO  
 STA. 2+93 LT (FAS 754, PARK ST. AT FRENCH STREET)  
 STA. 2+93 RT (FAS 754, PARK ST. AT FRENCH STREET)

EXISTING PAVEMENT  
 PROPOSED BITUMINOUS MATERIAL

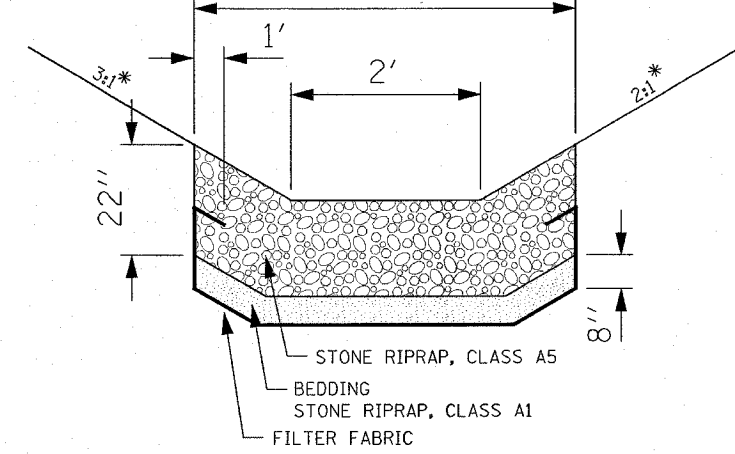


**CURB TRANSITION DETAIL**

STA. 5+66 TO 5+71 LT  
 STA. 6+54.6 TO 6+59.6 LT

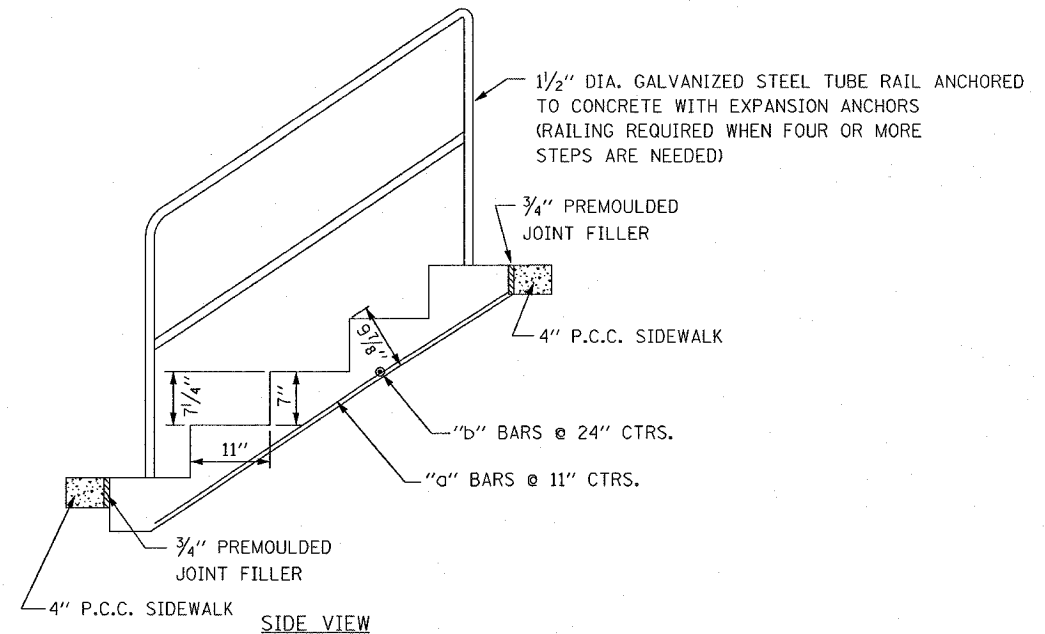
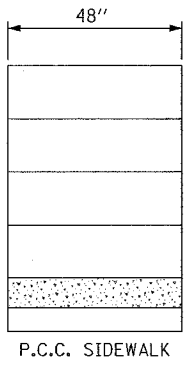


SEE PLAN



\* SLOPE RATIOS VARY, SEE CROSS SECTIONS

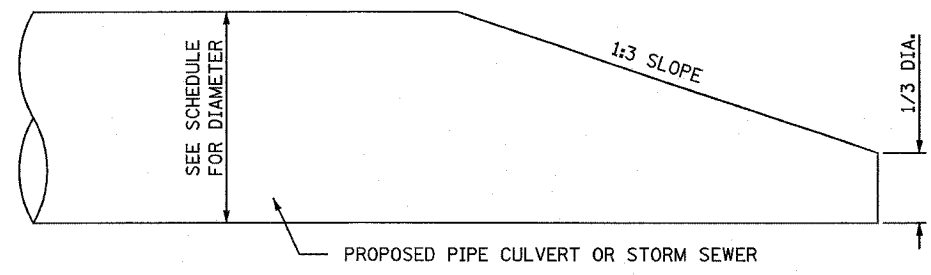
**RIPTRAP IN DITCH DETAIL**



NO. OF STEPS	WIDTH (IN.)	CLASS "SI" CONCRETE CUBIC YARDS	#4 REINFORCEMENT BARS				PIPE HANDRAIL FT.
			BAR.	NO.	LENGTH	POUNDS	
1	48	0.17	a	5	2'-0"	12	
			b	2	3'-9"		
2	48	0.26	a	5	3'-0"	15	
			b	2	3'-9"		
3	48	0.35	a	5	4'-0"	21	
			b	3	3'-9"		
4*	48	0.44	a	5	5'-0"	24	
			b	3	3'-9"		
5*	48	0.53	a	5	6'-0"	30	
			b	4	3'-9"		
6*	48	0.62	a	5	7'-0"	33	
			b	4	3'-9"		

\* RAILING REQUIRED

**CONCRETE STEP DETAIL**



**BEVELED END SECTION**

THE BEVELED END PORTION WILL BE PAID FOR AT THE SAME UNIT PRICE PER LINEAL FOOT AS THE PIPE CULVERT OR STORM SEWER

REVISIONS	
NAME	DATE

ILLINOIS DEPARTMENT OF TRANSPORTATION  
**ROADWAY DETAILS**  
 FAS ROUTE 754 (PARK ST.)  
 SECTION 4RS-2, 4BR  
 CALHOUN COUNTY

DATE: MAY, 2003  
 DRAWN BY: WJS  
 CHECKED BY: MKC  
 PLOT DATE: 11/3/2005

Rev. 11-4-05

PLAN	DATE
NO.	
BY	
CHECKED	
DATE	
APPROVED	
DATE	

C:\Documents and Settings\Local Settings\Temporary Internet Files\OLK58\032-4033\details\77.dgn  
 REF-  
 REF-

**B.M. #9**

Chisled "X" on flange bolt of fire hydrant, southwest corner of Park Street and French Street. Elevation = 444.23

**B.M. #10**

Chisled "X" on flange bolt of fire hydrant, southwest corner of Park Street and North County Road. Elevation = 437.29

**EXISTING STRUCTURE:**

Structure No. 007-0015 built in 1924 as F.A.S. ROUTE 754, SEC 4RS-2, 4BR single-span, reinforced concrete slab bridge on closed abutments with spread footings, 0° skew, 21'-0" back-to-back of abutments, 32'-2" out to out deck.

Road shall be kept open to one lane of traffic at all times by utilizing stage construction.

No salvage.

**NOTES:**

Deck drains shall be located clear of all diaphragms.

Field welding of construction accessories will not be permitted to beams or girders.

Fasteners shall be high strength bolts. Bolts shall be 3/4" dia., open holes 13/16" dia., unless noted otherwise.

All construction joints shall be bonded.

**STATE OF ILLINOIS  
DEPARTMENT OF TRANSPORTATION**

**NOTES: (Cont.)**

The main load carrying member components subject to tensile stress shall conform to the Supplemental Requirements for Notch Toughness Zone 2. These components are the wide flange beams.

Reinforcement bars shall conform to the requirements of AASHTO M31 or M322, Grade 60.

Layout of slope protection system may be varied in the field to suit ground conditions as directed by the Engineer.

The contractor shall drive 1 steel HP 12x53 test pile in a permanent location near the roadway centerline at the south abutment as directed by the Engineer before ordering the remainder of piles.

Excavation behind existing abutment walls shall be done before removing the existing superstructure. The Contractor shall sawcut the existing abutments at the stage removal line before Stage I removal.

The Contractor shall obtain a construction permit from the Illinois Department of Natural Resources (IDNR), Office of Water Resources for any temporary construction activity placed in water, except cofferdams. This shall include the placement of material for run-arounds, causeways, etc. Any permit application by the Contractor shall refer to the IDNR permit number DS2002105 which was issued for the permanent construction.

**NOTES: (Cont.)**

Calculated weight of M 270, Grade 36 = 1494 lbs.  
Calculated weight of M 270, Grade 50 = 103,278 lbs.

The inorganic zinc rich primer/Acrylic/Acrylic Paint System shall be used for shop and field painting of new structural steel except where otherwise noted. The color of the final finish coat for all interior steel surfaces shall be gray, Munsell No. 5B 7/1. The color of final finish coat for exterior and bottom flange of the fascia beams shall be Gray, Munsell No. 5B 7/1. See Special Provision for "Cleaning and Painting New Metal Structures".

**TOTAL BILL OF MATERIAL**

ITEM	UNIT	SUPER	SUB	TOTAL
Porous Granular Embankment (Special)	Cu Yd		150	150
Stone Riprap, Class A5	Sq Yd	758		758
Removal of Existing Structures	Each			1
Structure Excavation	Cu Yd		300	300
Floor Drains	Each	10		10
Concrete Structures	Cu Yd		35.2	35.2
Concrete Superstructure	Cu Yd	140.2		140.2
Bridge Deck Grooving	Sq Yd	277		277
Protective Coat	Sq Yd	434		434
Furnishing and Erecting Structural Steel	L Sum	1		1
Stud Shear Connectors	Each	2373		2373
Reinforcement Bars, Epoxy Coated	Pound	24880	4580	29460
Aluminum Railing, Type L	Foot	75		75
Furnishing Steel Piles HP12x53	Foot		510	510
Driving Steel Piles	Foot		510	510
Test Pile Steel HP12x53	Each		1	1
Metal Shoes	Each		11	11
Temporary Sheet Piling	Sq Ft		3050	3050
Name Plates	Each		1	1
Filter Fabric	Sq Yd	758		758
Bar Splicers	Each	313	20	333

**WATERWAY INFORMATION**

Drainage Area = 1.371 mi<sup>2</sup> Low Grade Elev. = 434.50 @ Sta. 7+10.00

Flood Yr.	Q C.F.S.	Opening Sq. Ft.	Nat. Head-Ft.	Headwater El.					
Design	50	2370	194	679	434.3	1.6	0.0	435.9	434.3
Base	100	2799	194	681	434.4	3.0	0.0	437.4	434.4
Overtopping	3	600	194	684	434.3	0.2	--	434.5	--
Max. Calc.	500	3869	194	690	434.5	5.7	0.1	440.2	434.6

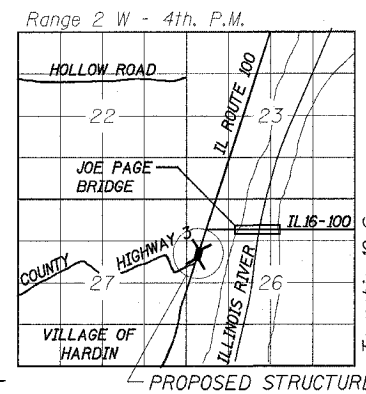
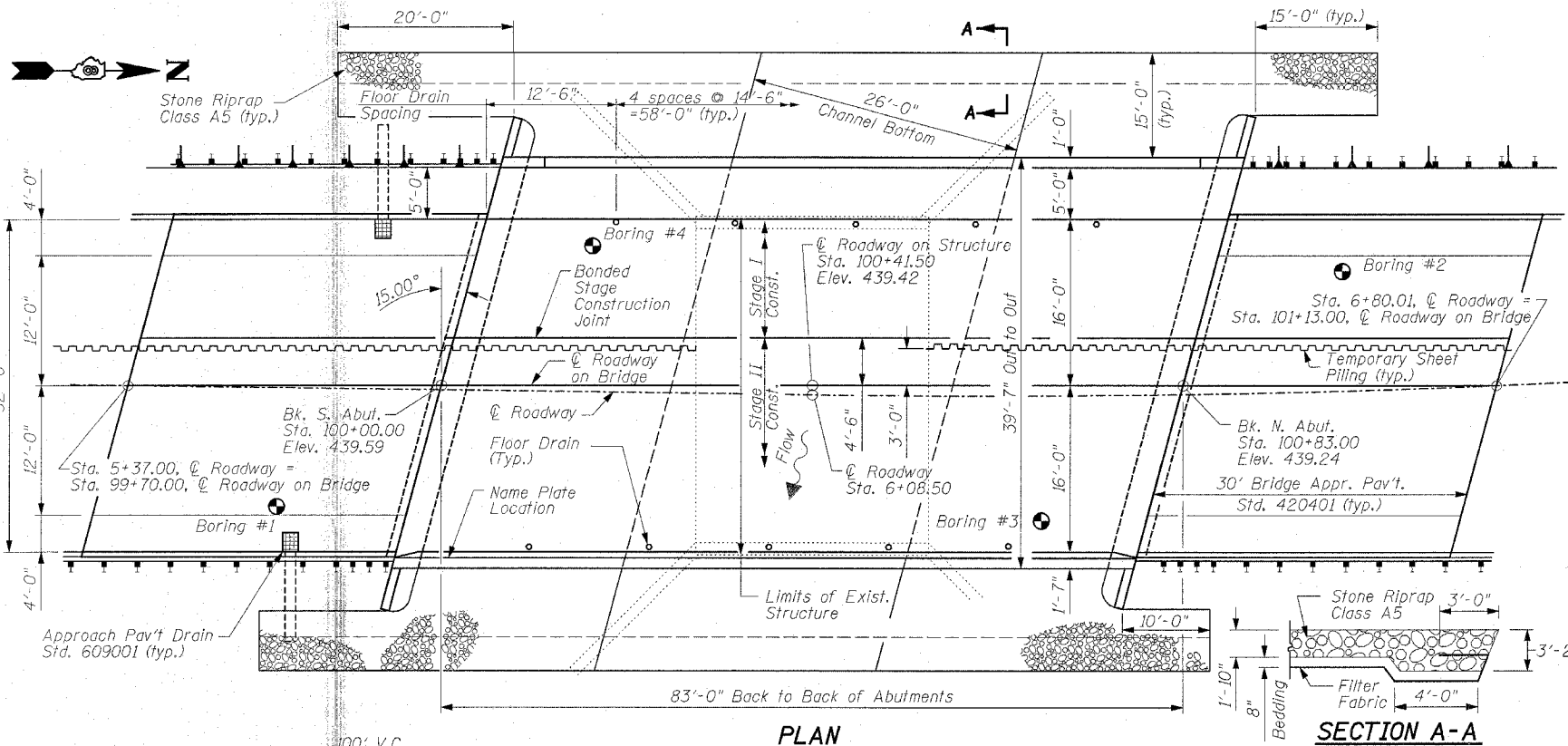
Note: 10-year Illinois River backwater of 434.3' used for starting water surface elevation.

**INDEX OF SHEETS**

General Plan . . . . .	1
Stage Construction . . . . .	2
Temporary Sheetpile Wall . . . . .	3
Temporary Concrete Barrier for Stage Construction . . . . .	4
Top of Slab Elevations . . . . .	5 & 6
Superstructure . . . . .	7
Superstructure Details . . . . .	8
Superstructure Details II . . . . .	9
Diaphragm Details . . . . .	10
Type L Aluminum Railing . . . . .	11
Framing Plan & Details . . . . .	12
Anchor Bolt Details . . . . .	13
North Abutment . . . . .	14
South Abutment . . . . .	15
Bar Splicer Detail . . . . .	16
Soil Boring Logs . . . . .	17 & 18
Detour Route SN 007-6012 . . . . .	19 & 20

**GENERAL PLAN  
PARK STREET OVER  
AN UNNAMED CREEK  
F.A.S. ROUTE 754  
SECTION 4RS-2, 4BR  
CALHOUN COUNTY  
ROADWAY STATION 6+08.50  
STRUCTURE NO. 007-0026**

**Benton & Associates, Inc.**  
Consulting Engineers / Land Surveyors  
1970 West Lafayette Avenue Jacksonville, Illinois 62650  
Phone : 217-245-4146 Fax : 217-245-4149  
IL Design Firm Registration No. 184-000852



**LOCATION SKETCH**

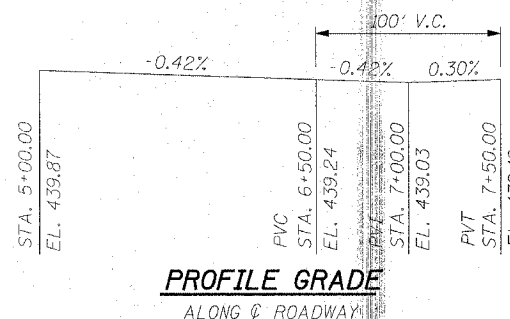
**DESIGN SPECIFICATIONS**  
1996 AASHTO with 1997-2002 Interims

**DESIGN STRESSES**

**FIELD UNITS**  
f<sub>c</sub> = 3,500 psi  
f<sub>y</sub> = 60,000 psi (reinforcement)  
F<sub>y</sub> = 50,000 psi (AASHTO M270 Grade 50)  
F<sub>y</sub> = 36,000 psi (AASHTO M270 Grade 36)

**SEISMIC DATA**

Seismic Performance Category (SPC) = A  
Bedrock Acceleration Coefficient (A) = 7.0%  
Site Coefficient (S) = 1.0



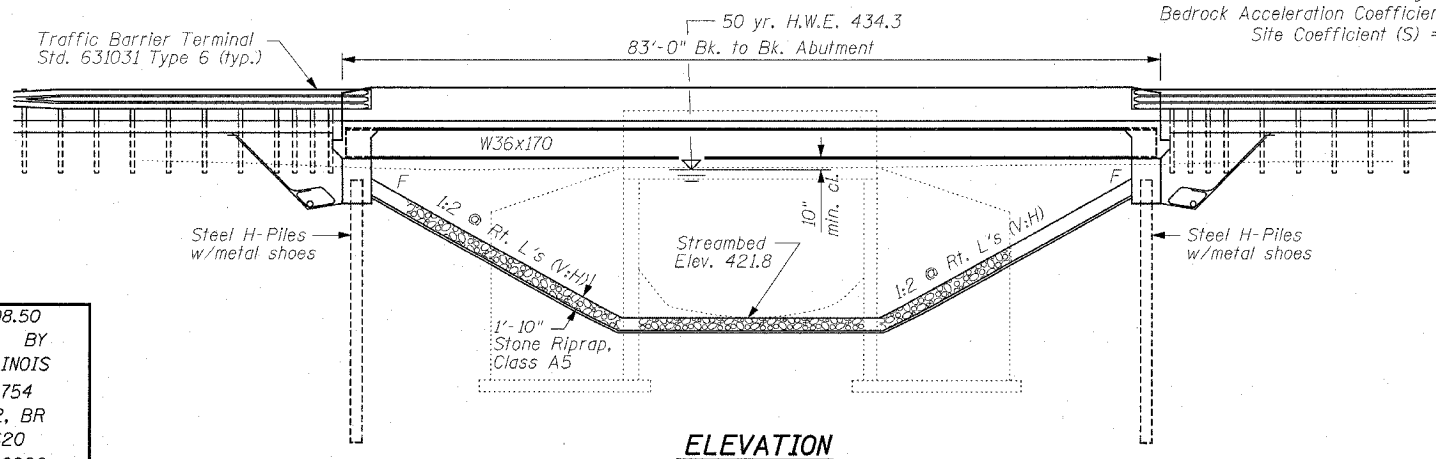
**PROFILE GRADE**

ALONG & ROADWAY

DESIGNED	- L.E.L.
CHECKED	- REG
DRAWN	- M.T.L.
CHECKED	- L.E.L.

STATION 6+08.50  
BUILT 20\_\_ BY  
STATE OF ILLINOIS  
FAS ROUTE 754  
SECTION 4RS-2, BR  
LOADING HS20  
STR. NO. 007-0026

**NAME PLATE**  
See Std. 515001



**ELEVATION**

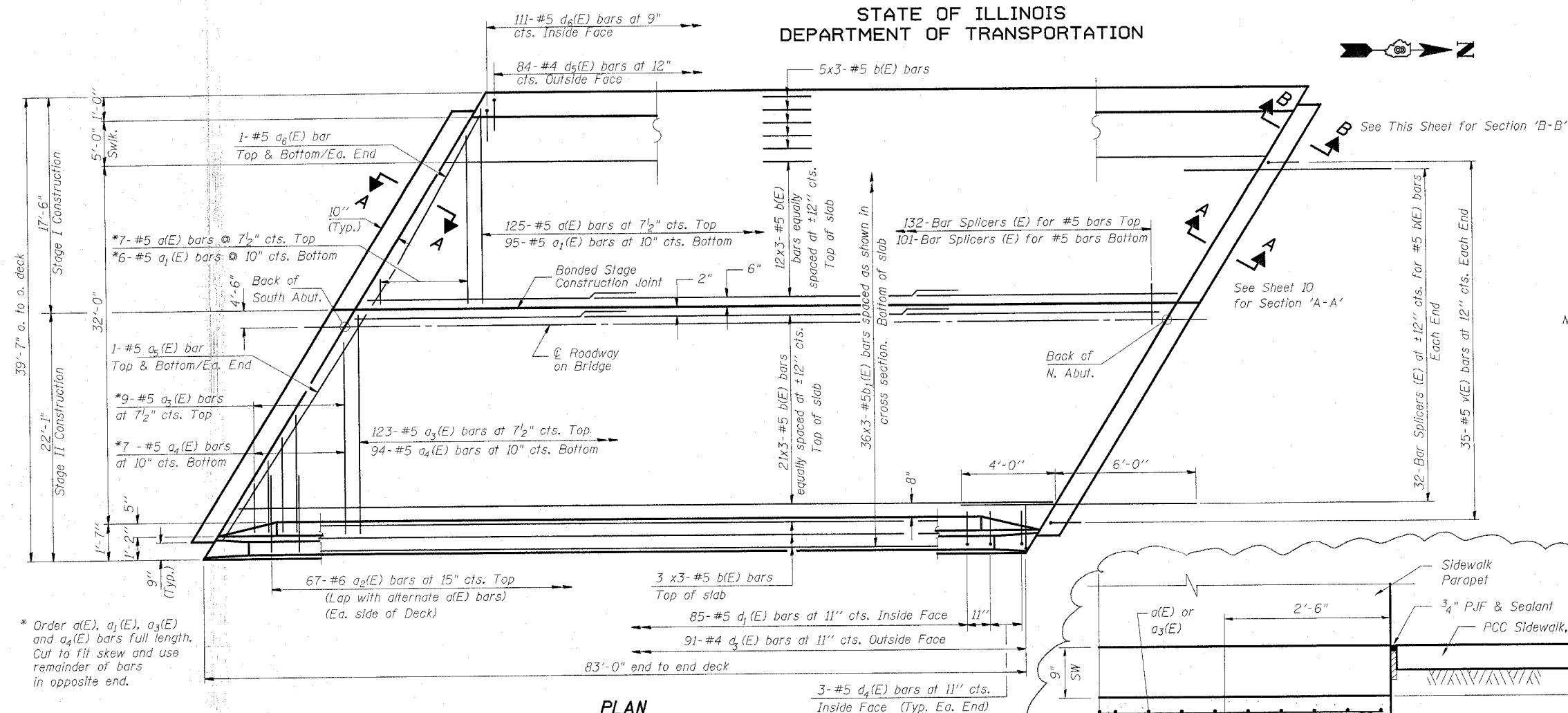
Rev. 11-4-05

STATE OF ILLINOIS  
DEPARTMENT OF TRANSPORTATION

ROUTE NO.	SECTION	COUNTY	SHEET NO.	SHEET NO.
F.A.S. 754	4RS-2, 4BR	CALHOUN	87	41
FED. ROAD DIST. NO. 7		ILLINOIS	FED. AID PROJECT	

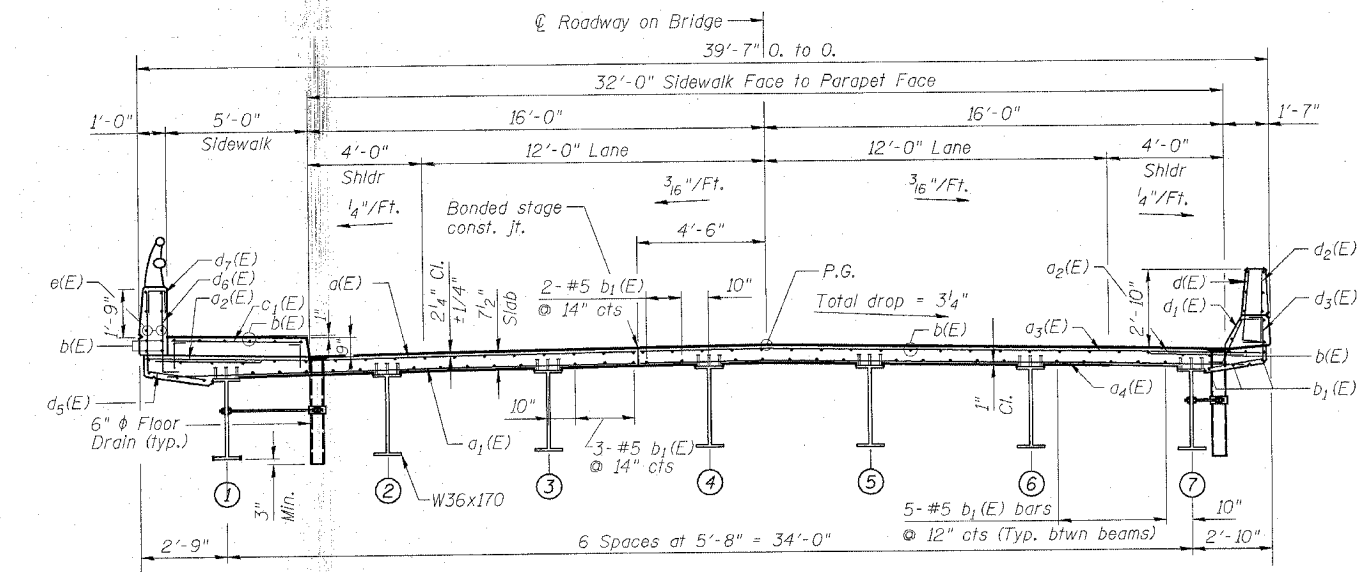
CONTRACT NO. 76269

20 SHEETS



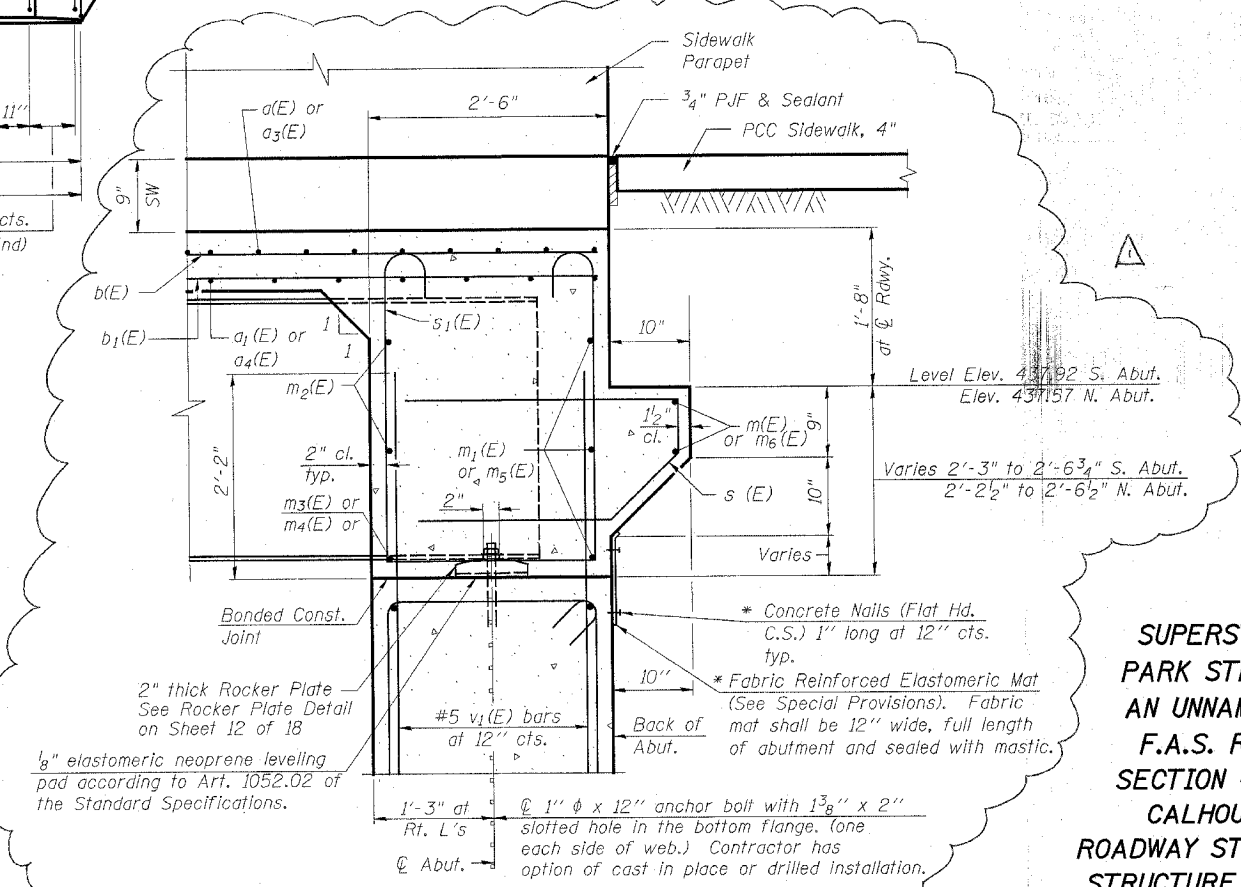
\* Order a(E), a1(E), a3(E) and a4(E) bars full length. Cut to fit skew and use remainder of bars in opposite end.

PLAN



CROSS SECTION  
(Looking North)

DESIGNED	- L.E.L.
CHECKED	- REG
DRAWN	- M.T.L.
CHECKED	- L.E.L.



SECTION B-B

Dimensions at right angles to abutment, except as noted.  
\* Cost included with Concrete Structures.

Notes: See Sheets 8 & 9 of 20 for superstructure details and Bill of Material.  
Reinforcement bars designated (E) shall be epoxy coated.  
Bars indicated thus 20x3-#5 etc. indicates 20 lines of bars with 3 lengths per line.  
See Sheet 8 of 18 for parapet reinforcement.

MIN. BAR LAP

#4 = 2'-0"  
#5 = 2'-6"

**SUPERSTRUCTURE**  
**PARK STREET OVER**  
**AN UNNAMED CREEK**  
**F.A.S. ROUTE 754**  
**SECTION 4RS-2, 4BR**  
**CALHOUN COUNTY**  
**ROADWAY STATION 6+08.50**  
**STRUCTURE NO. 007-0026**

**Benton & Associates, Inc.**  
Consulting Engineers / Land Surveyors  
1970 West Lafayette Avenue Jacksonville, Illinois 62650  
Phone : 217-245-4146 Fax : 217-245-4149  
IL Design Firm Registration No. 184-000852

Rev. 11-4-05

STATE OF ILLINOIS  
DEPARTMENT OF TRANSPORTATION

ROUTE NO.	SECTION	COUNTY	TOTAL SHEETS	SHEET	SHEET NO. 9
F.A.S. 754	4RS-2, 4BR	CALHOUN	87	43	20 SHEETS
FED. ROAD DIST. NO. 7	ILLINOIS	FED. AID PROJECT			

CONTRACT NO. 76269

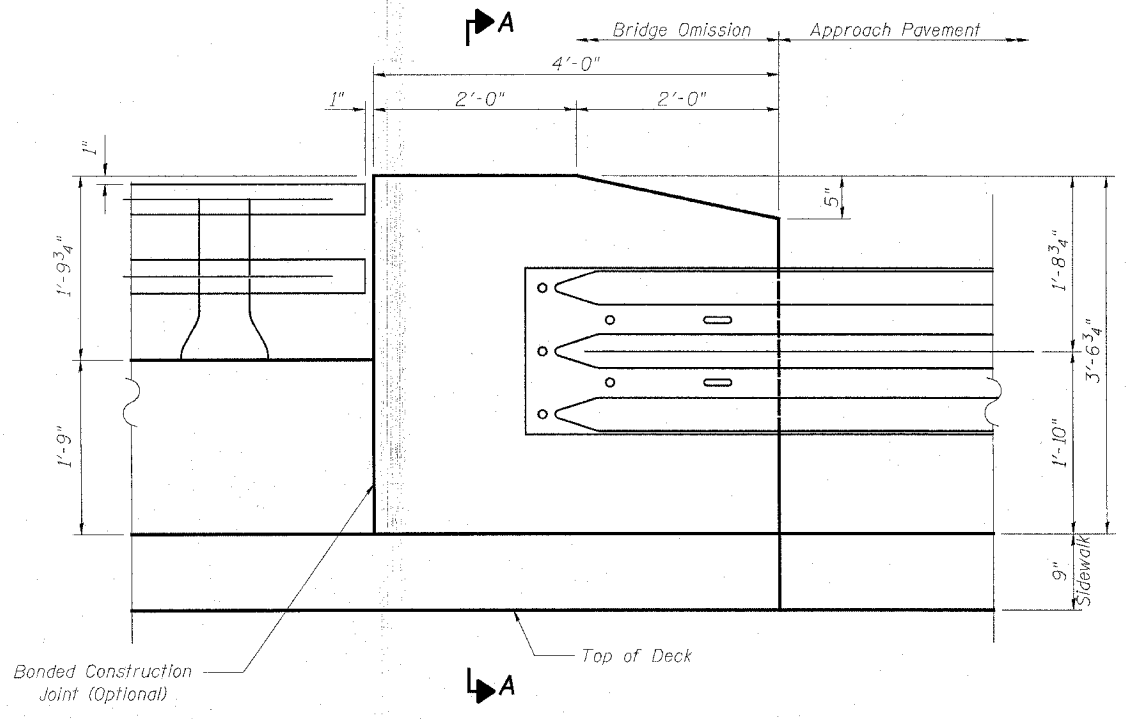
**SUPERSTRUCTURE  
BILL OF MATERIAL**

Bar	No.	Size	Length	Shape
a(E)	132	#5	17'-2"	—
a <sub>1</sub> (E)	101	#5	16'-9"	—
a <sub>2</sub> (E)	134	#6	4'-6"	—
a <sub>3</sub> (E)	132	#5	21'-9"	—
a <sub>4</sub> (E)	101	#5	21'-4"	—
a <sub>5</sub> (E)	4	#5	22'-2"	—
a <sub>6</sub> (E)	4	#5	17'-5"	—
b(E)	153	#5	29'-5"	—
b <sub>1</sub> (E)	108	#5	29'-5"	—
c(E)	168	#5	1'-9"	┌
c <sub>1</sub> (E)	84	#5	4'-6"	—
d(E)	91	#5	3'-0"	└
d <sub>1</sub> (E)	85	#5	2'-5"	└
d <sub>2</sub> (E)	91	#4	3'-0"	└
d <sub>3</sub> (E)	91	#4	3'-8"	└
d <sub>4</sub> (E)	6	#4	2'-1"	└
d <sub>5</sub> (E)	84	#4	4'-7"	└
d <sub>6</sub> (E)	111	#5	3'-9"	└
d <sub>7</sub> (E)	18	#4	2'-0"	└
d <sub>8</sub> (E)	6	#5	3'-1"	└
d <sub>9</sub> (E)	6	#5	3'-4"	└
d <sub>10</sub> (E)	4	#4	3'-1"	└
d <sub>11</sub> (E)	4	#4	3'-4"	└
e(E)	60	#4	16'-2"	—
e <sub>1</sub> (E)	6	#8	31'-4"	—
e <sub>2</sub> (E)	6	#5	29'-4"	—
e <sub>3</sub> (E)	4	#4	3'-8 $\frac{1}{2}$ "	└
e <sub>4</sub> (E)	8	#4	3'-8"	—
m(E)	4	#6	17'-0"	—
m <sub>1</sub> (E)	6	#6	17'-3"	—
m <sub>2</sub> (E)	28	#6	8'-5"	—
m <sub>3</sub> (E)	12	#6	5'-3"	—
m <sub>4</sub> (E)	4	#6	2'-4"	—
m <sub>5</sub> (E)	6	#6	22'-6"	—
m <sub>6</sub> (E)	4	#6	21'-10"	—
s(E)	84	#5	6'-3"	└
s <sub>1</sub> (E)	78	#5	10'-3"	└
v(E)	70	#5	4'-4"	└
Reinforcement Bars, Epoxy Coated		Pound	24880	
Concrete Superstructure		Cu. Yds.	140.2	

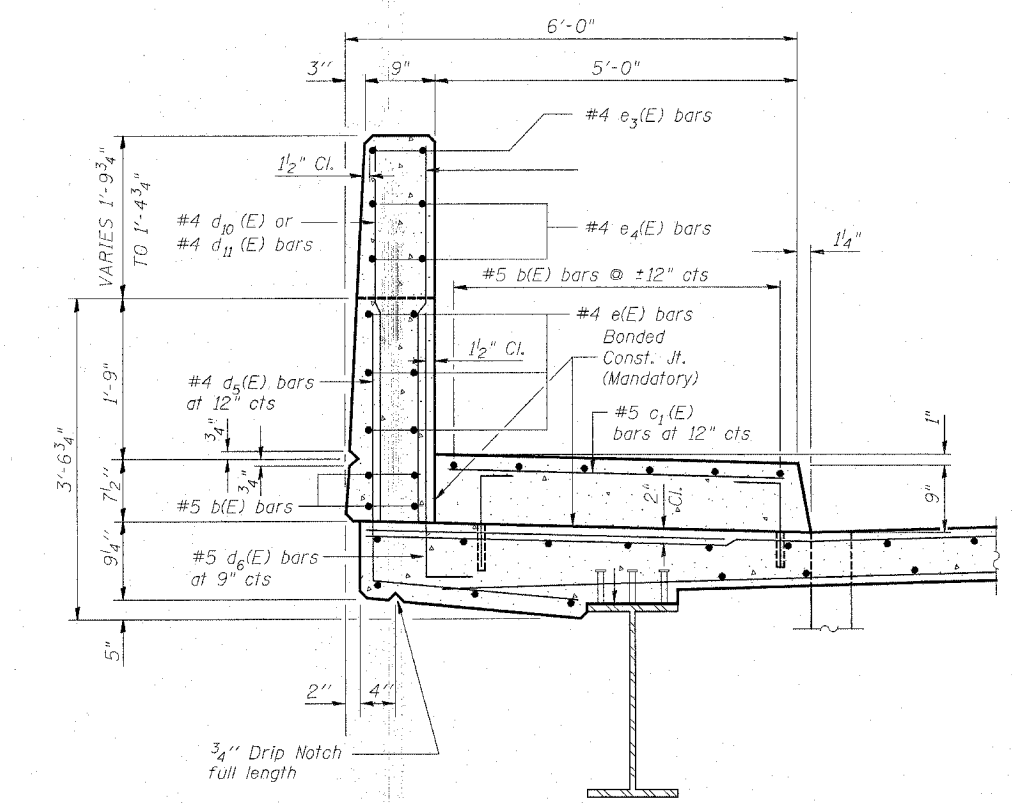
Reinforcement bars designated (E) shall be epoxy coated.  
Bars indicated thus 1x3-#5 etc. indicates 1 line of bars with 3 lengths per line.

**SUPERSTRUCTURE DETAILS II**  
PARK STREET OVER  
AN UNNAMED CREEK  
F.A.S. ROUTE 754  
SECTION 4RS-2, 4BR  
CALHOUN COUNTY  
ROADWAY STATION 6+08.50  
STRUCTURE NO. 007-0026

**Benton & Associates, Inc.**  
Consulting Engineers/Land Surveyors  
1970 West Lafayette Avenue Jacksonville, Illinois 62650  
Phone : 217-245-4146 Fax : 217-245-4149  
IL Design Firm Registration No. 184-000852

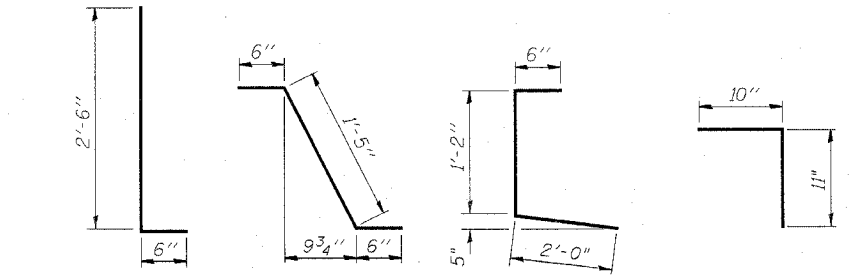


**Elevation-Type 6 Rail Attachment Detail** (A)

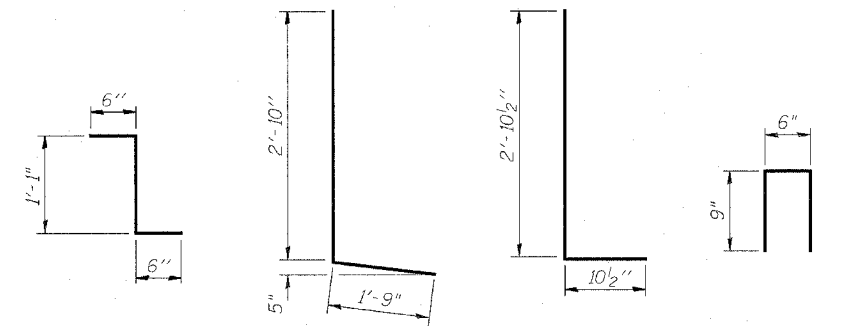


**SECTION THRU SIDEWALK** (A)

DESIGNED	- L.E.L.
CHECKED	- REG
DRAWN	- M.T.L.
CHECKED	- L.E.L.



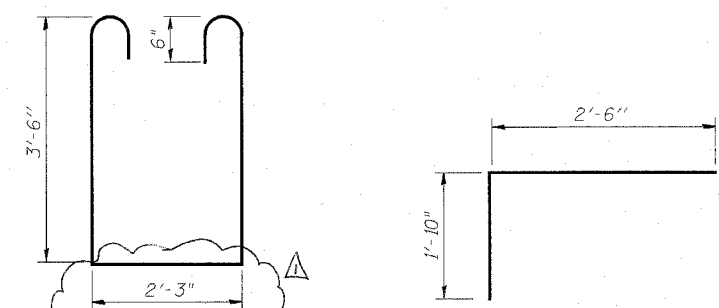
**BARS d(E) & d<sub>2</sub>(E) BAR d<sub>1</sub>(E) BAR d<sub>3</sub>(E) BAR c(E)**



**BAR d<sub>4</sub>(E) BAR d<sub>5</sub>(E) BAR d<sub>6</sub>(E) BAR d<sub>7</sub>(E)**



**BAR e<sub>3</sub>(E) BAR s(E)**



**BAR s<sub>1</sub>(E) BAR v(E)**

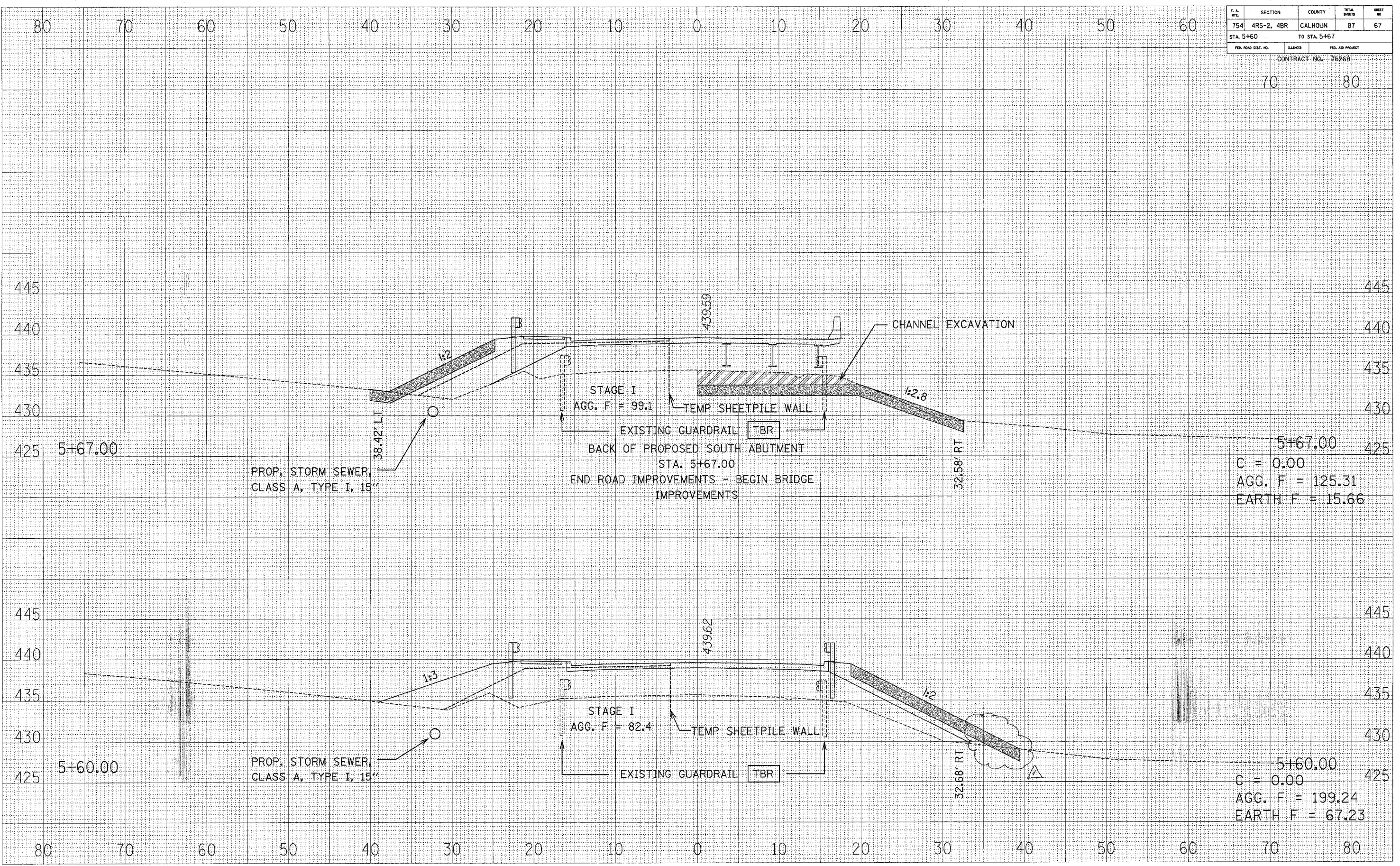
Rev. 11-4-05

F.A. DIST.	SECTION	COUNTY	TOTAL SHEETS	SHEET NO.
754	4RS-2, 4BR	CALHOUN	87	67
STA. 5+60		TO STA. 5+67		
FED. ROAD DIST. NO.		ILLINOIS	FED. AID PROJECT	
CONTRACT NO. 76269				

70 80

BY	DATE
SURVEYED	
PLOTTED	
INSTRUMENTED	
NOTED	
AREAS CHECKED	
NO.	

BY	DATE
SURVEYED	
PLOTTED	
INSTRUMENTED	
NOTED	
AREAS CHECKED	
NO.	



5+67.00  
 C = 0.00  
 AGG. F = 125.31  
 EARTH F = 15.66

5+60.00  
 C = 0.00  
 AGG. F = 199.24  
 EARTH F = 67.23

Rev. 11-4-05